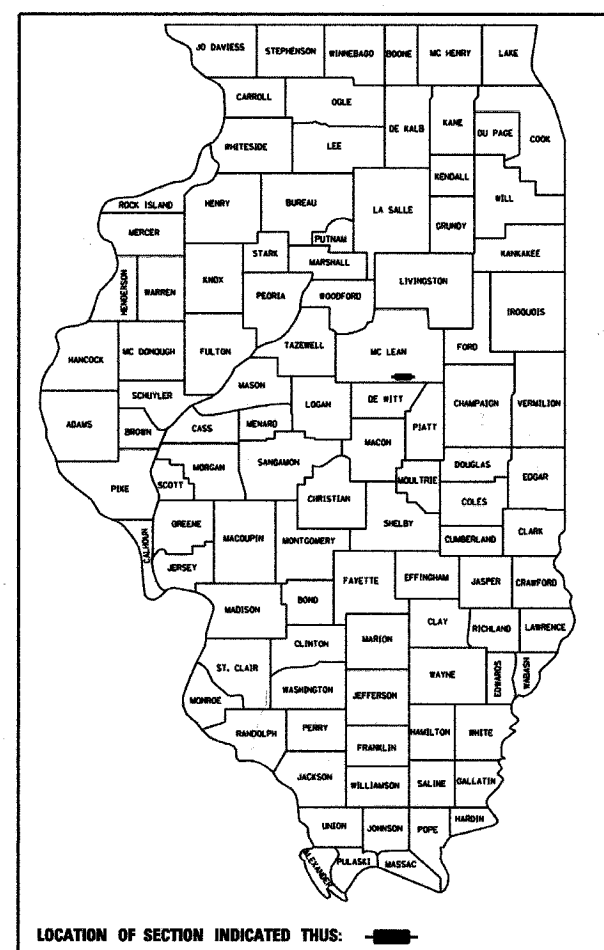


FAP RTE	SECTION	COUNTY	TOTAL SHEETS	SHEET NO.
315	102X-BR-2	McLEAN	44	1

P-93-041-02  
D-93-053-05



LOCATION OF SECTION INDICATED THIS: [Black box symbol]

**FUNCTIONAL CLASSIFICATION: OTHER PRINCIPAL ARTERIAL**  
**DESIGN SPEED: 55 mph**  
**POSTED SPEED: 55 mph**  
**ADT: 1550 (2006)**  
**PV: 70.7%**  
**SU: 8.6%**  
**MU: 20.7%**

STATE OF ILLINOIS  
DEPARTMENT OF TRANSPORTATION  
DIVISION OF HIGHWAYS

SUBMITTED November 4, 20 05  
Gregory Monte  
DEPUTY DIRECTOR OF HIGHWAYS, REGION ENGINEER

December 9, 20 05  
Mike Hine  
ENGINEER OF DESIGN AND ENVIRONMENT

December 9, 20 05  
Eric Harn  
DEPUTY DIRECTOR OF HIGHWAYS, CHIEF ENGINEER

**DESIGN DESIGNATION N.A.**

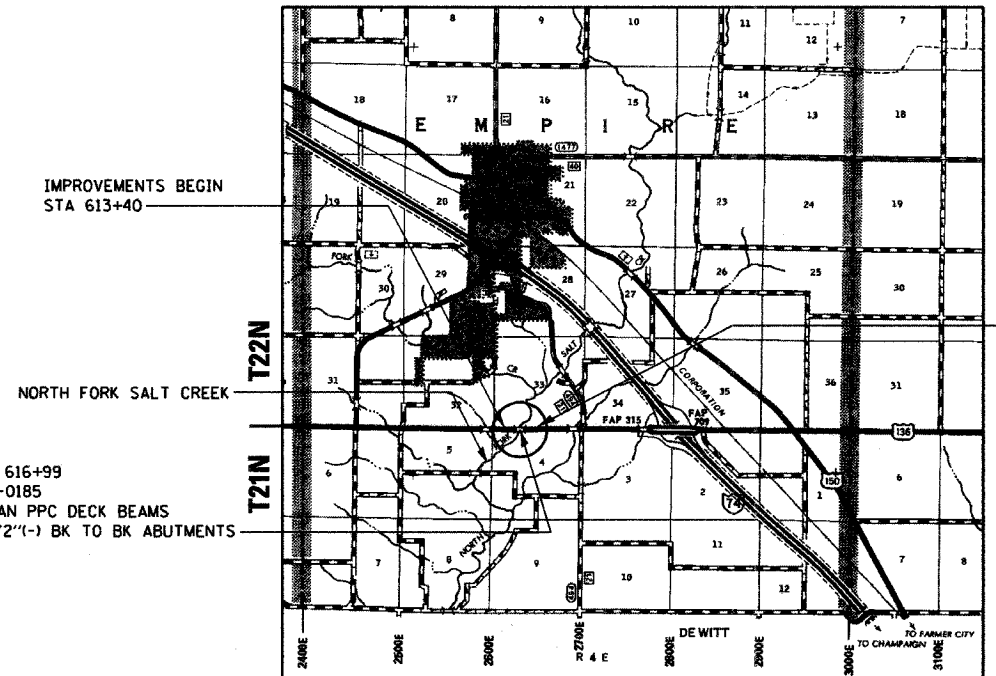


STATE OF ILLINOIS  
DEPARTMENT OF TRANSPORTATION  
DIVISION OF HIGHWAYS  
**PROPOSED HIGHWAY PLANS**  
FAP ROUTE 315 (US 136)  
SECTION 102X-BR-2  
PROJECT BHF-315(042)  
McLEAN COUNTY

C-93-089-05

US ROUTE 136 OVER NORTH FORK SALT CREEK  
SUPERSTRUCTURE REPLACEMENT

R4E, 3RD PM

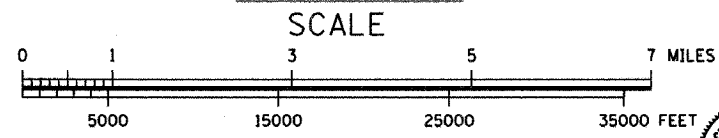


IMPROVEMENTS BEGIN  
STA 613+40

IMPROVEMENTS END  
STA 619+72

STATION 616+99  
S.N. 057-0185  
FOUR SPAN PPC DECK BEAMS  
215'-9 1/2"(-) BK TO BK ABUTMENTS

LOCATION MAP



GROSS LENGTH = 632 FT. = 0.120 MI.  
NET LENGTH = 632 FT. = 0.120 MI.

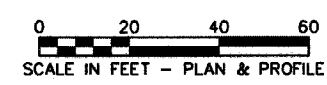


DATE: 10/26/2005  
ILLINOIS PROFESSIONAL LICENSE NO. 37421  
(EXPIRATION DATE: 11-30-05)

**PRINTED BY THE AUTHORITY OF THE STATE OF ILLINOIS**

**INDEX OF SHEETS**

SHEET NO.	DESCRIPTION
<b>ROADWAY PLANS</b>	
1.	COVER SHEET
2.	GENERAL NOTES AND STANDARDS
3.	SUMMARY OF QUANTITIES
4.	TYPICAL SECTIONS
5.	SCHEDULES OF QUANTITIES
6.-8.	FAP RTE 315 (US 136) PLAN AND PROFILE
9.	TRAFFIC CONTROL AND PROTECTION FOR TEMPORARY DETOUR
10.	EROSION CONTROL AND DRAINAGE PLAN
11.	MISCELLANEOUS DETAILS
12.	GUARDRAIL DETAILS
<b>STRUCTURE PLANS</b>	
13.	GENERAL PLAN
14.	GENERAL DATA
15.	SUPERSTRUCTURE DETAILS
16.-18.	SUPERSTRUCTURE DETAILS
19.	TYPE SM STEEL BRIDGE RAIL
20.	STRIP SEAL EXPANSION JOINT
21.	ANCHOR BOLT DETAILS
22.	WEST ABUTMENT
23.	EAST ABUTMENT
24.	ABUTMENT DETAILS
25.	PIER 1
26.	PIER 2
27.	PIER 3
28.	PIER DETAILS
29.	BAR SPLICER ASSEMBLY DETAILS
<b>EXISTING STRUCTURE PLANS</b>	
30.-37.	EXISTING STRUCTURE PLANS
<b>CROSS SECTIONS</b>	
38.-44.	FAP RTE 315 (US 136) CROSS SECTIONS



FULL SIZE PLANS HAVE BEEN PREPARED USING STANDARD ENGINEERING SCALES. REDUCED SIZED PLANS WILL NOT CONFORM TO STANDARD SCALES. IN MAKING MEASUREMENTS ON REDUCED PLANS, THE ABOVE SCALES MAY BE USED.

MICROFILMED \_\_\_\_\_  
 REEL NUMBER \_\_\_\_\_  
 AWARDED \_\_\_\_\_  
 RESIDENT ENGINEER \_\_\_\_\_  
 AS BUILT CHANGES WERE MADE ON THE FOLLOWING SHEETS \_\_\_\_\_

J.U.L.I.E.  
JOINT UTILITY LOCATION INFORMATION FOR EXCAVATION  
1-800-892-0123

DISTRICT 3 NO. (815) 434-6131  
PROJECT ENGINEER: RICK POWELL  
UNIT CHIEF: BRAD DUNCAN  
TOWNSHIP: EMPIRE  
CONTRACT NO.: 66584

