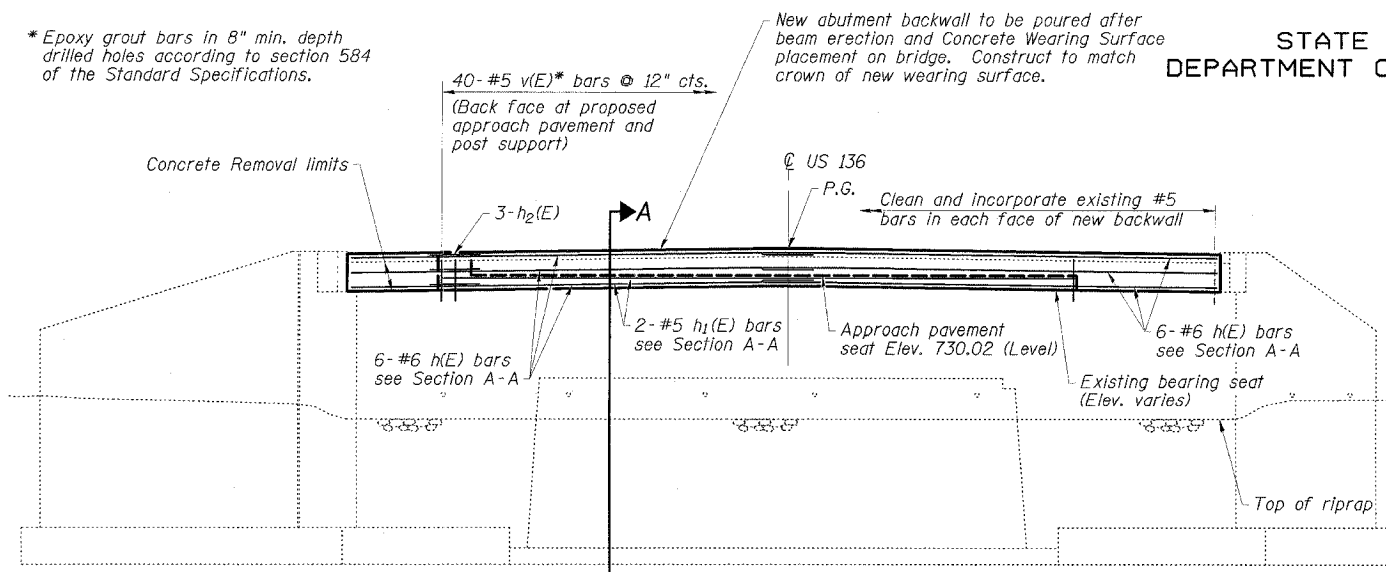


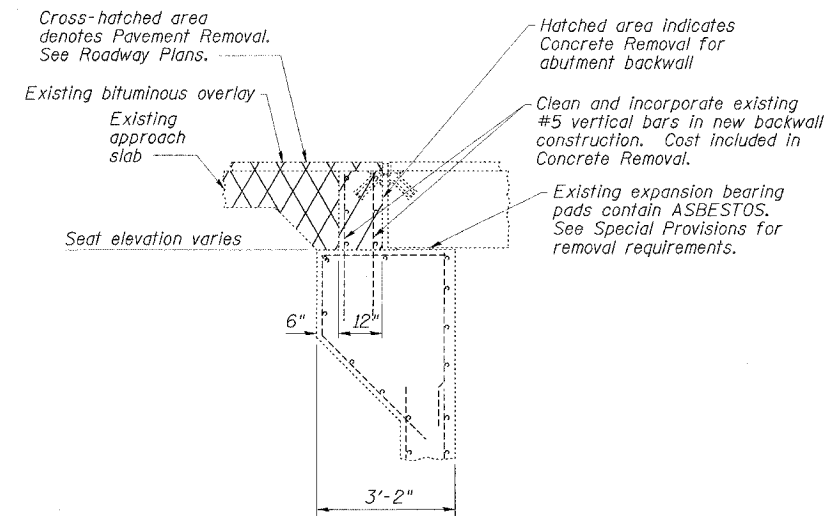
STATE OF ILLINOIS  
DEPARTMENT OF TRANSPORTATION

ROUTE NO.	SECTION	COUNTY	TOTAL SHEETS	SHEET NO.
FAP 315		McLEAN	44	23
STA.	TO STA.			
FED. ROAD DIST. NO.	ILLINOIS	FED. AID PROJECT-		
*102X-BR-2		DWG. NO.	11	OF 17
CONTRACT NO. 66584				

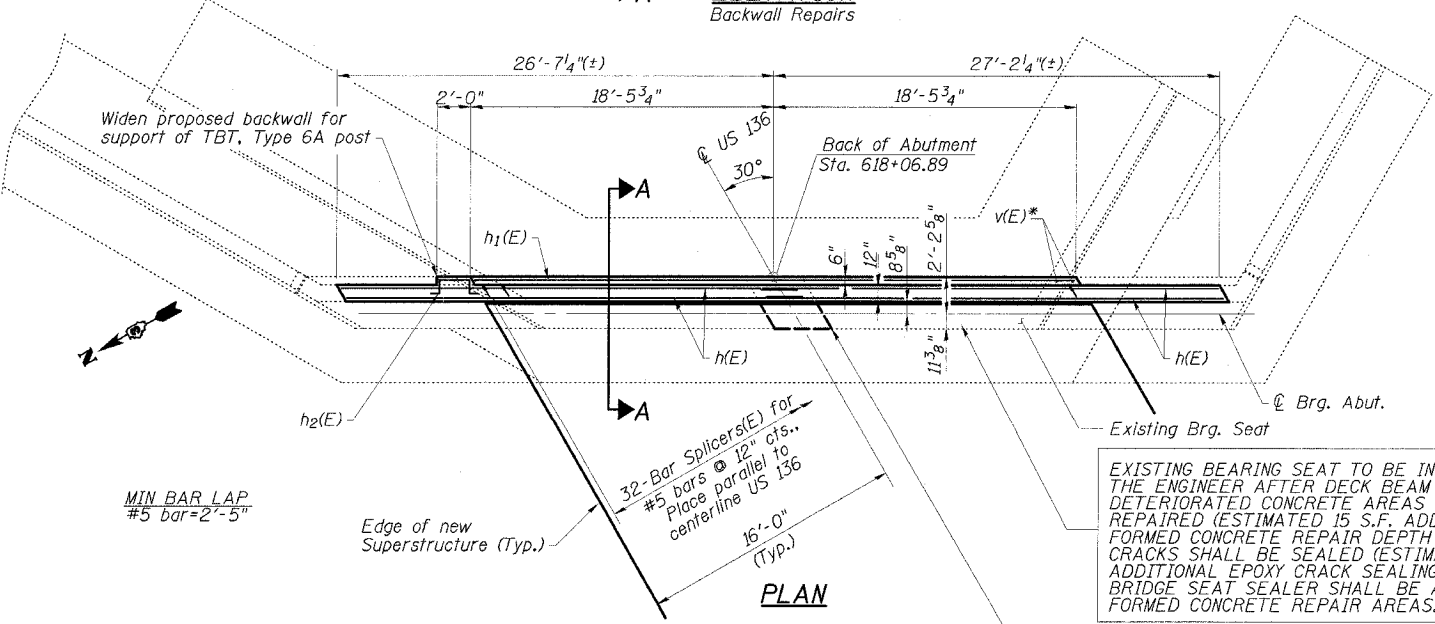
\*Epoxy grout bars in 8" min. depth drilled holes according to section 584 of the Standard Specifications.



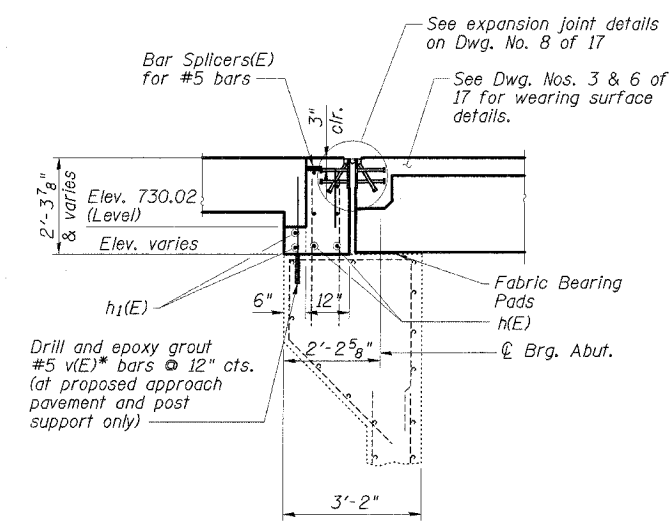
**ELEVATION**  
Backwall Repairs



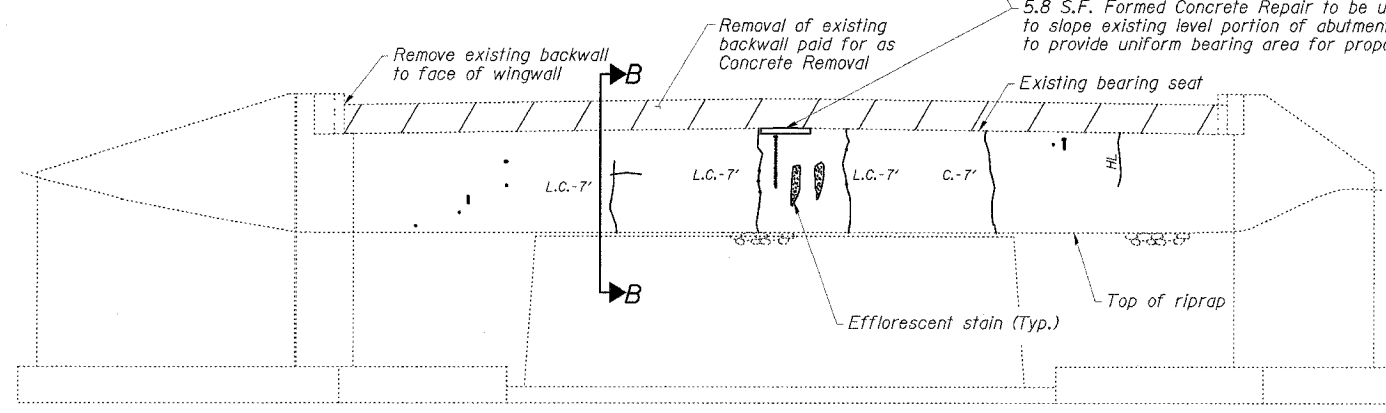
**SECTION B-B**  
EXISTING



**PLAN**



**SECTION A-A**  
PROPOSED



**ELEVATION**  
Abutment and Wingwall Repairs

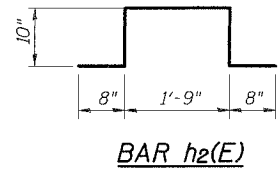
NOTE: ABUTMENT CRACK REPAIR LENGTHS AND FORMED CONCRETE REPAIR AREAS ARE ESTIMATED FROM 11-15-01 SURVEY WORK. ACTUAL LOCATIONS AND QUANTITIES OF REPAIRS SHALL BE SHOWN BY THE ENGINEER ON THE AS-BUILT PLANS FOR THIS SECTION.

**EAST ABUTMENT**  
**BILL OF MATERIAL**

Bar	No.	Size	Length	Shape
h (E)	12	#6	27'-11"	—
h <sub>1</sub> (E)	2	#5	36'-6"	—
h <sub>2</sub> (E)	3	#5	4'-9"	┌
v (E)	40	#5	2'-6"	—
Concrete Removal			Cu. Yd.	3.6
Concrete Structures			Cu. Yd.	5.3
Reinforcement Bars, Epoxy Coated			Pound	700
Asbestos Bearing Pad Removal			Each	30
Bridge Seat Sealer			Sq. Ft.	21
Epoxy Crack Sealing			Foot	48
Formed Concrete Repair (Depth Equal to or Less Than 5")			Sq. Ft.	20.8
Bar Splicers			Each	32

**REPAIR LEGEND**

- Inspection Date: 11-15-01
- ▮ Rust Stained Area
  - (W/L) Moisture Stained or Leached Area
  - {HL} Hairline Crack - Not to be Sealed
  - {c.-6"} Crack (> 1/16" Width) — EPOXY CRACK SEALING
  - {L.C.-6"} Leached Crack (> 1/16" Width) — EPOXY CRACK SEALING
  - S.F. (diagonal lines) Delaminated Area — FORMED CONC. REPAIR
  - S.F. (cross-hatched) Spalled Area (Depth ≤ 5") — FORMED CONC. REPAIR



**EAST ABUTMENT**  
**US 136 OVER BRANCH OF SALT CREEK**  
**FAP ROUTE 315 - SECTION 102X-BR-2**  
**McLEAN COUNTY**  
**STATION 616+99.00**  
**STRUCTURE NO. 057-0185**

**ESCA**  
CONSULTANTS, INC.

DESIGNED BY:	ELH	6/05
DRAWN BY:	DWH	6/05
CHECKED BY:	ELH	10/05
APPROVED BY:	RDP	10/05