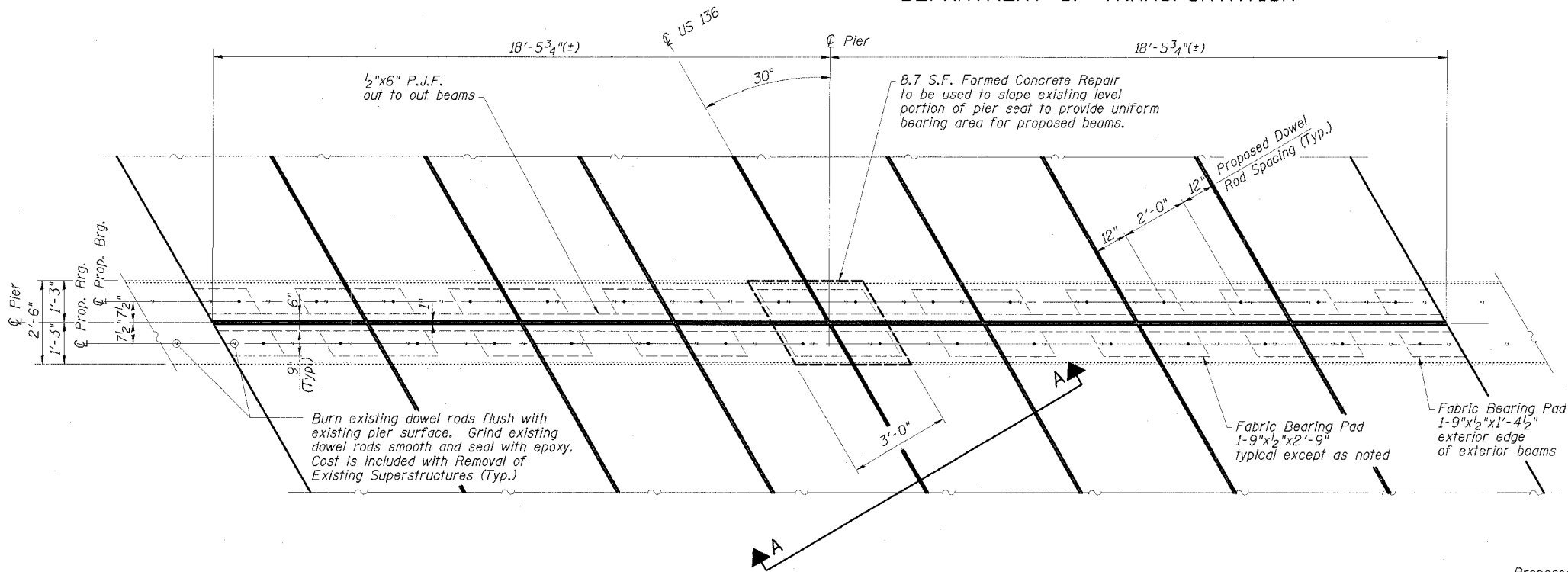


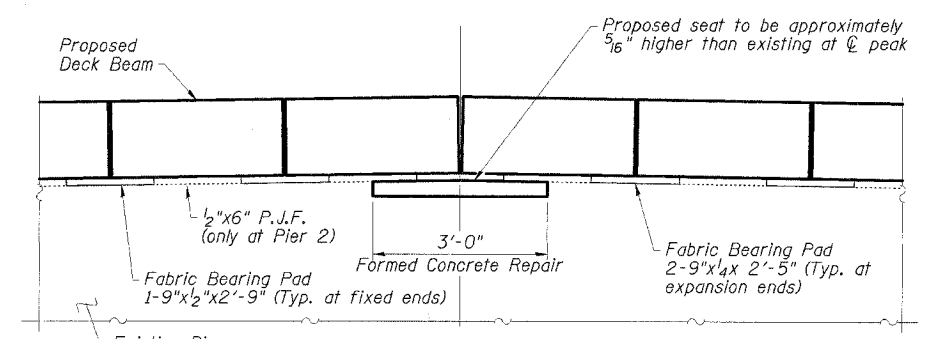
STATE OF ILLINOIS
DEPARTMENT OF TRANSPORTATION

ROUTE NO.	SECTION	COUNTY	TOTAL SHEETS	SHEET NO.
FAP 315		McLEAN	44	28
STA.	TO STA.			
FED. ROAD DIST. NO.	ILLINOIS	FED. AID PROJECT-		
*102X-BR-2	DWG. NO.	16	OF 17	

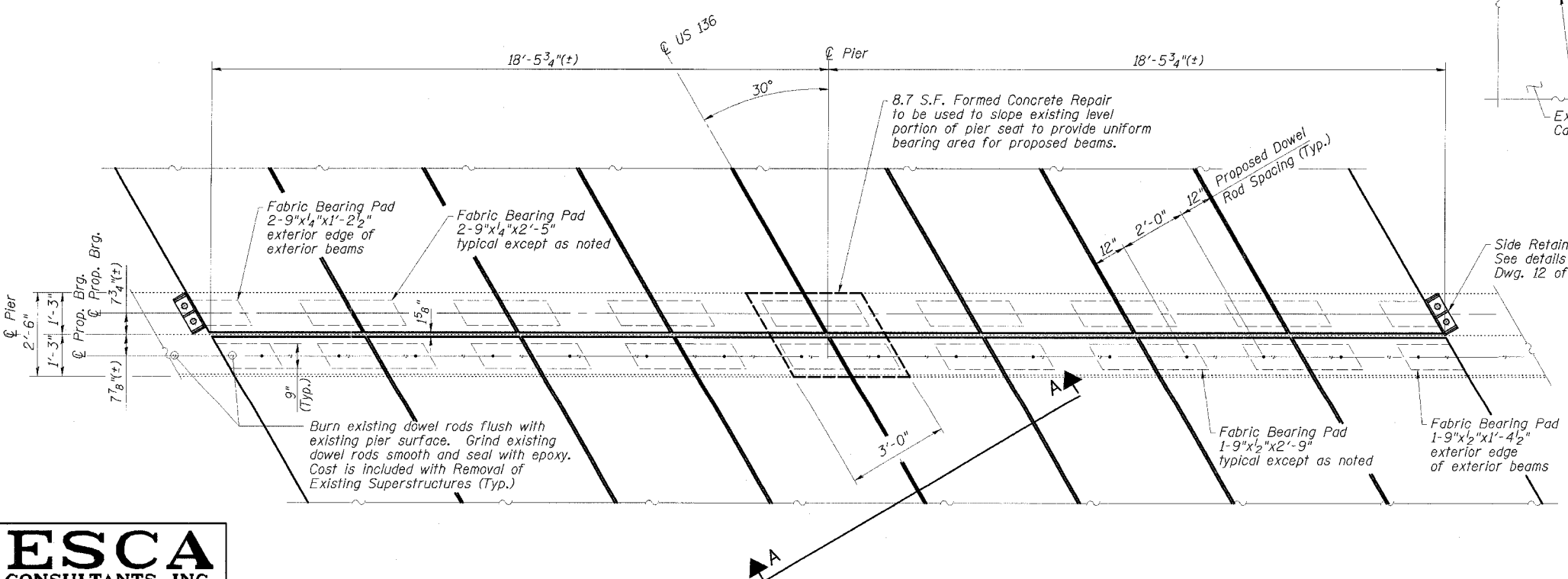
CONTRACT NO. 66584



PIER 2 BEARING SEAT PLAN
(Concrete wearing surface not shown)



SECTION A-A
(Concrete wearing surface and dowel rods not shown)



PIERS 1 AND 3 BEARING SEAT PLAN
(Concrete wearing surface not shown)

ESCA
CONSULTANTS, INC.

DESIGNED BY:	ELH	6/05
DRAWN BY:	DWH	6/05
CHECKED BY:	ELH	10/05
APPROVED BY:	RDP	10/05

PIER DETAILS
US 136 OVER BRANCH OF SALT CREEK
FAP ROUTE 315 - SECTION 102X-BR-2
McLEAN COUNTY
STATION 616+99.00
STRUCTURE NO. 057-0185