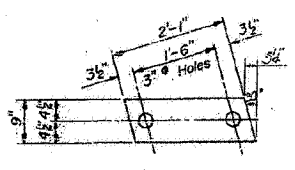
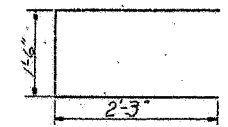


FAP RITE	SECTION	COUNTY	TOTAL SHEETS NO.
315	102X-BR-2	McLEAN	44
STA. TO STA.		31	
FED. ROAD DIST. NO.		ILLINOIS FED. AID PROJECT	

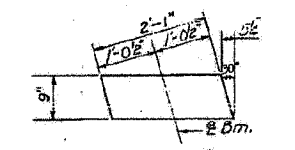
PROJECT NO.	SECTION	DATE	SCALE	SHEET NO.
119	McLEAN	153	60	9
SHEETS				



FABRIC BEARING PAD



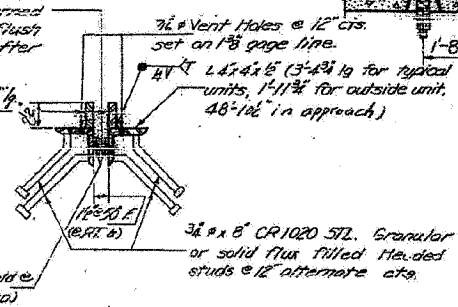
U2 BAR



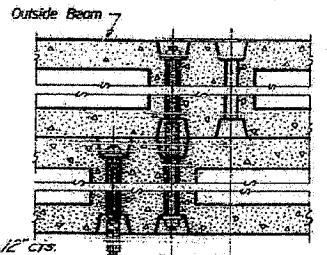
GRAPHITED ASBESTOS BEARING PAD

1/2" Holes @ 12" cts. for 3/8 bolts set on 2 1/8 gage line. All bolts shall be turned sawed or clipped off flush with back of angles after forms are removed.

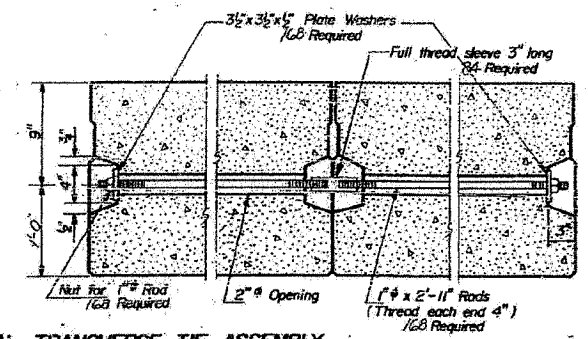
3/8 x 2 1/2" bars 48'-10 1/2" (Fabricated to fit down after bms are in place)



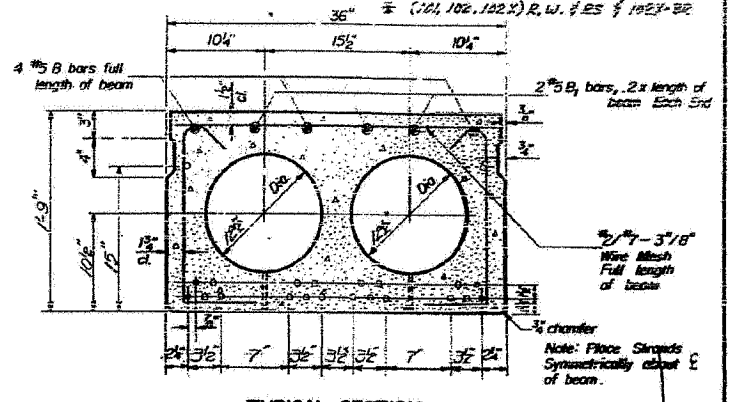
DETAIL A (For Preformed Joint Sealer See sheet 4)



Outside Beam

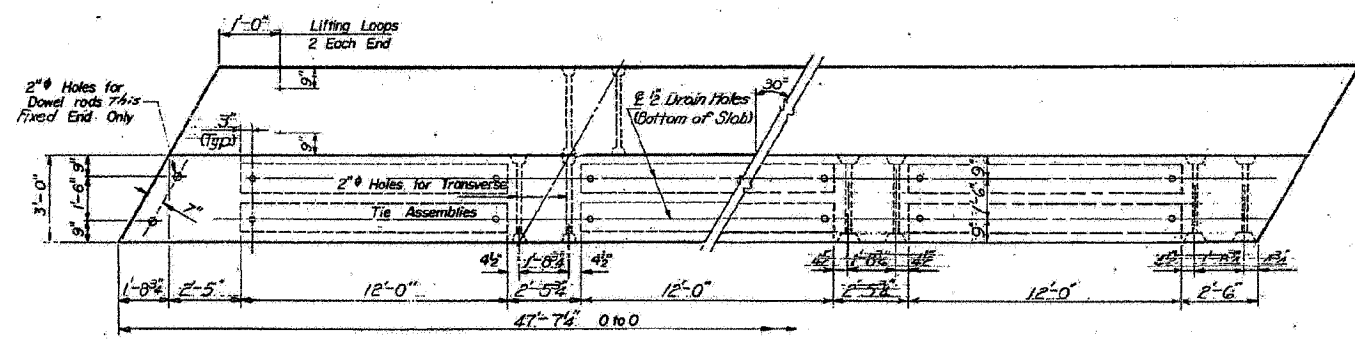


TYPICAL TRANSVERSE TIE ASSEMBLY

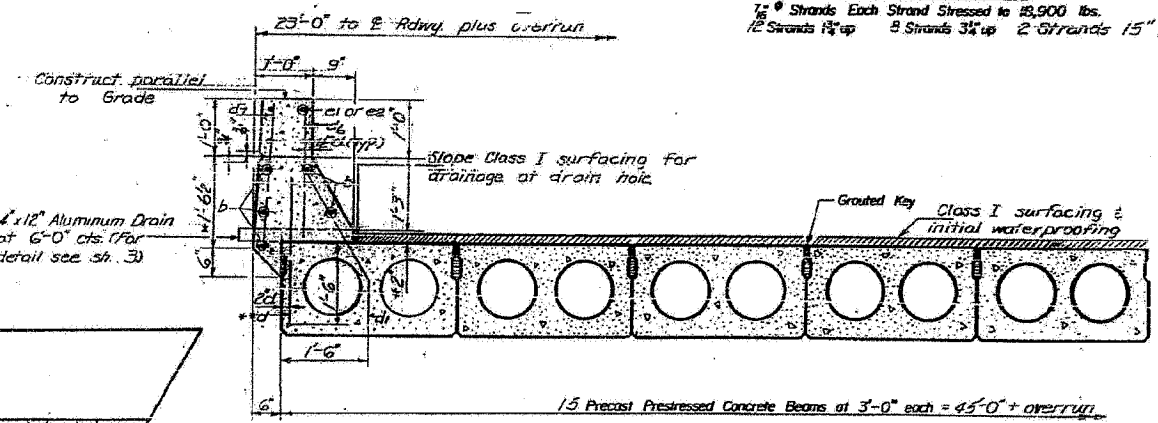


TYPICAL SECTION

1/2" Strands Each Strand Stressed to 8,900 lbs.  
12 Strands 1 1/2" up 8 Strands 3/4" up 2 Strands 15" up



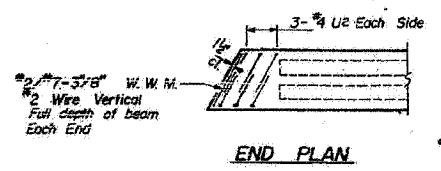
PLAN



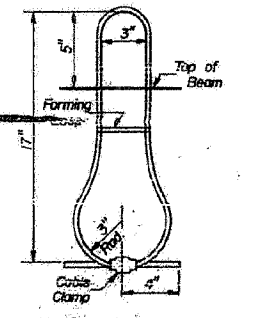
PARTIAL CROSS SECTION

For Complete Cross-Section See sheet 4.

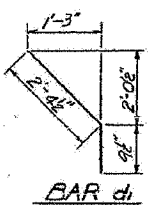
\* At E Spans. Varies to allow for camber in beams.  
\*\* d bars shall be 2'-9" long.



END PLAN



LIFTING LOOP DETAIL



BAR d

DESIGNED <i>W.C. Hoising</i>	EXAMINED <i>[Signature]</i>
CHECKED <i>[Signature]</i>	PASSED <i>[Signature]</i>
DRAWN <i>[Signature]</i>	
CHECKED <i>[Signature]</i>	

SEPT. 1 1970

*[Signatures]*

PD-1-L 11-19-65 Rev. 5-20-68

GENERAL NOTES

Prestressing steel shall be non-galvanized high strength, stress-relieved 7-wire strand. The nominal diameter shall be 7/8" and the nominal cross-sectional area shall be 0.109 sq. in. Lifting loops shall be 1/2" diameter, 6x19 class wire rope with fiber core and shall have a minimum ultimate tensile strength of 21,000 lbs.

The 1/2" rods in the transverse tie assembly shall be tightened to a snug fit and the threads set. Pockets that receive transverse tie bar on outside beam shall be filled with grout after transverse tie assembly is in place.

Longitudinal shear keys shall be packed with a very dry mix of 2-1 sand and P.C. mortar. After beams have been erected, holes for the shear keys shall be drilled into the sub-structure and the anchor dowels shall be grouted in place.

Steel for dowel rods shall be A.S.T.M. A-306 or A.S.T.M. A-615.

After fabrication the transverse tie assemblies (the rods, nuts, washers and sleeves) shall be hot-dipped galvanized in accordance with A.S.T.M. Designation: A-153.

Cost of reinforcement and accessories cast into the beam, of bearing pads, of armor angles, and of grouting longitudinal shear keys is included in unit price bid for "Precast Prestressed Concrete Deck Beams."

Transverse tie rods shall be A.S.T.M. A-306, Grade 70-Br.

Armor Angles shall be A.S.T.M. A-36.

For Reinforcement Bars in Curb & Parapet Wall, See sheet 5.

Bars of f & d shall be cast into outside units for spacing. See sheet 5.

BILL OF MATERIAL

Bar	No.	Size	Length	Shape
Precast Prestressed Concrete Deck Beams (27)		Sq. Ft.	4294	

SPANS 1 & 4  
BEAM DETAIL  
FA 87-118 SEC. JACK-BR  
McLEAN COUNTY  
STA. 616+89