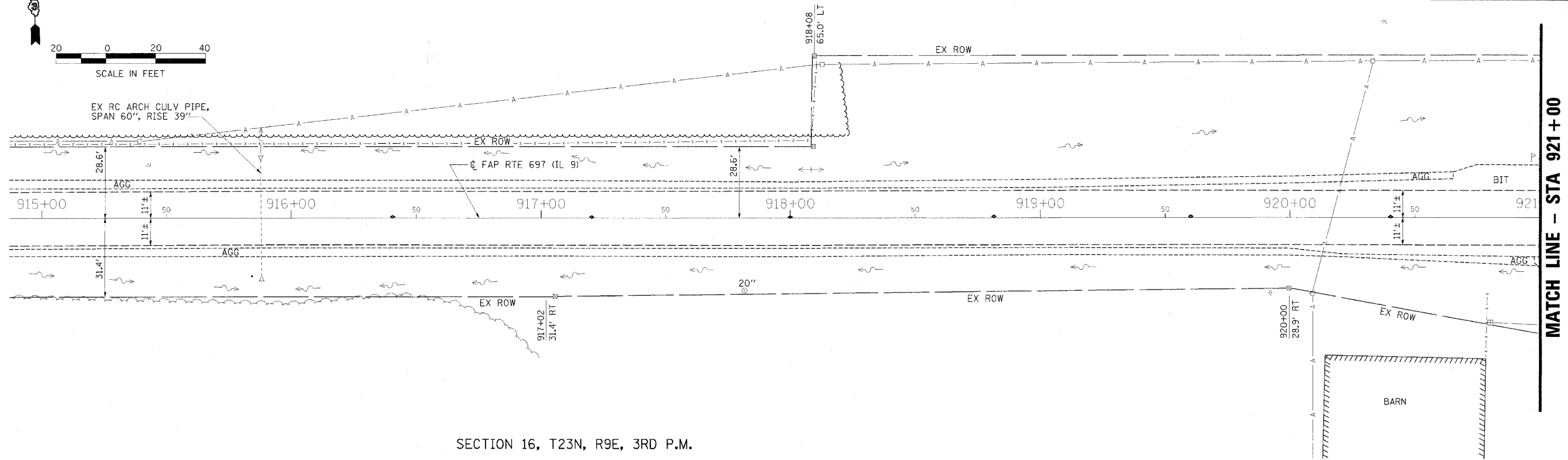
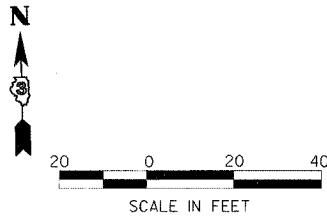


ROUTE NO.	SECTION	COUNTY	TOTAL SHEETS	SHEET NO.
FAP 697	17BR	FORD	40	7
STA 915+00	TO STA 921+00			
FED. ROAD DIST. NO.	ILLINOIS FED. AID PROJECT-			

SECTION 9, T23N, R9E, 3RD P.M.



SECTION 16, T23N, R9E, 3RD P.M.

PLAN

DATE	BY
SURVEYED BY	
NOTED BY	
CHECKED BY	
DATE	

PROFILE

DATE	BY
SURVEYED BY	
NOTED BY	
CHECKED BY	
DATE	

