

STATE OF ILLINOIS  
DEPARTMENT OF TRANSPORTATION

ROUTE NO.	SECTION	COUNTY	TOTAL SHEETS	SHEET NO.
FAP 697	17BR	FORD	40	20
STA.	TO STA.			
FED. ROAD DIST. NO.	ILLINOIS	FED. AID PROJECT-		
	DWG. NO. 7	OF 15		

CONTRACT NO. 66604

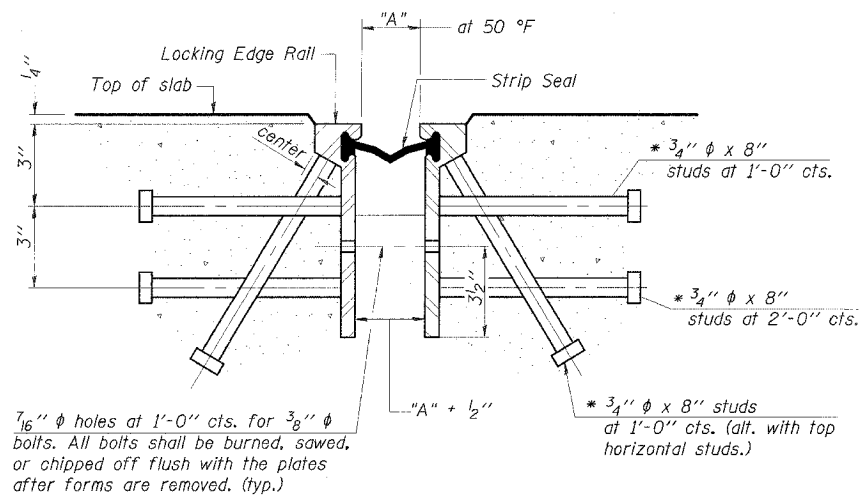
**GENERAL NOTES**

The strip seal shall be made continuous and shall have a minimum thickness of 1/4". The configuration of the strip seal shall match the configuration of the Locking Edge Rails.

The height and thickness of the Locking Edge Rails shown are minimum dimensions. The actual configuration of the Locking Edge Rails and matching strip seal may vary from manufacturer to manufacturer. Flanged edge rails will not be allowed.

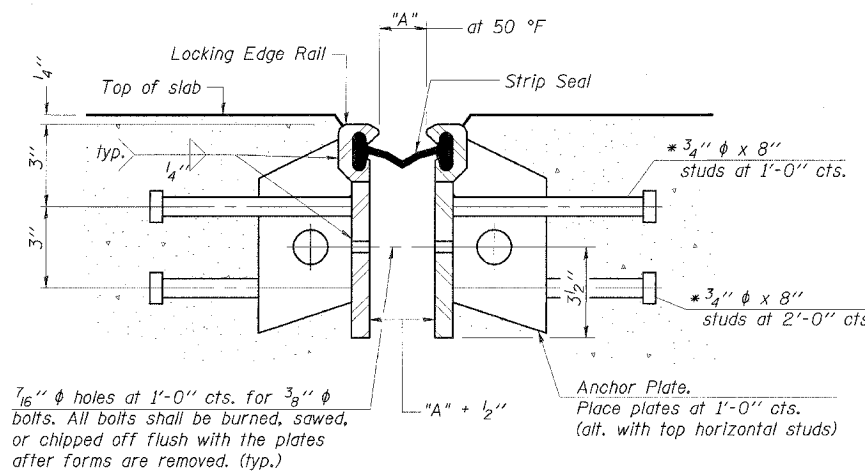
Locking Edge Rails may be spliced at slope discontinuities and stage construction joints.

The manufacturer's recommended installation methods shall be followed.



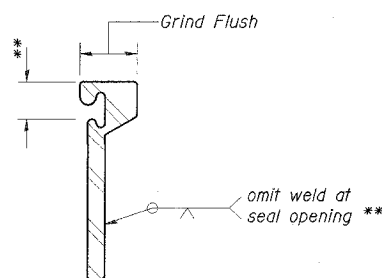
**SECTION THRU ROLLED RAIL EXP. JOINT**  
(188 Studs Required at Each Joint)

Required Strip Seal rated movement	"A"
1"	1 1/8"
2"	1 3/4"



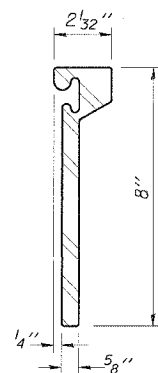
**SECTION THRU WELDED RAIL AT EACH EXPANSION JOINT**  
(114 Studs Required at Each Joint)  
(74 Anchor Plates Required at Each Joint)

\* Granular or solid flux filled headed studs conforming to Article 1006.32 of the Std. Specs., automatically end welded.

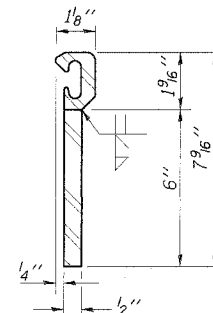


**LOCKING EDGE RAIL SPLICE**

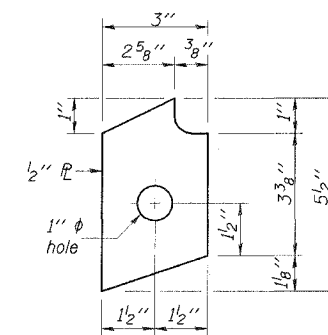
The inside of the locking edge rail groove shall be free of weld residue.



**ROLLED (EXTRUDED) RAIL**



**WELDED RAIL**



**ANCHOR PLATE**  
(for welded rail)

**LOCKING EDGE RAILS**

**ESCA**  
CONSULTANTS, INC.

DESIGNED BY:	ELH	5/05
DRAWN BY:	CJG	5/05
CHECKED BY:	ELH	9/05
APPROVED BY:	RDP	9/05

**STRIP SEAL EXPANSION JOINT**  
**IL 9 OVER BIG FOUR DITCH**  
**FAP ROUTE 697-SECTION 17BR**  
**FORD COUNTY**  
**STATION 923+87.00**  
**STRUCTURE NO. 027-0068**