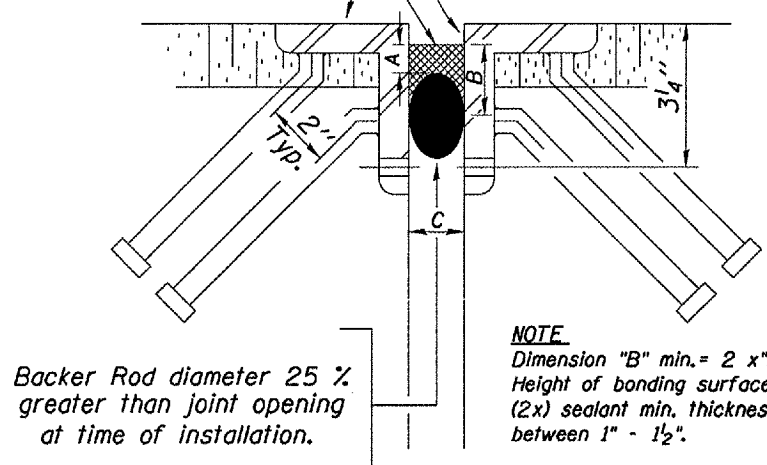


F.A.I. RTE.	SECTION	COUNTY	TOTAL SHEETS	SHEET NO.
155	*	TAZEWELL	27	22
STA. 18+89.42		TO STA. 21+10.58		
FED. ROAD DIST. NO. 4 ILLINOIS FED. AID PROJECT				
* 04 Joint Repair 2006				

Two-Part, Rapid-Cure 100% Silicone Jt. Sealer

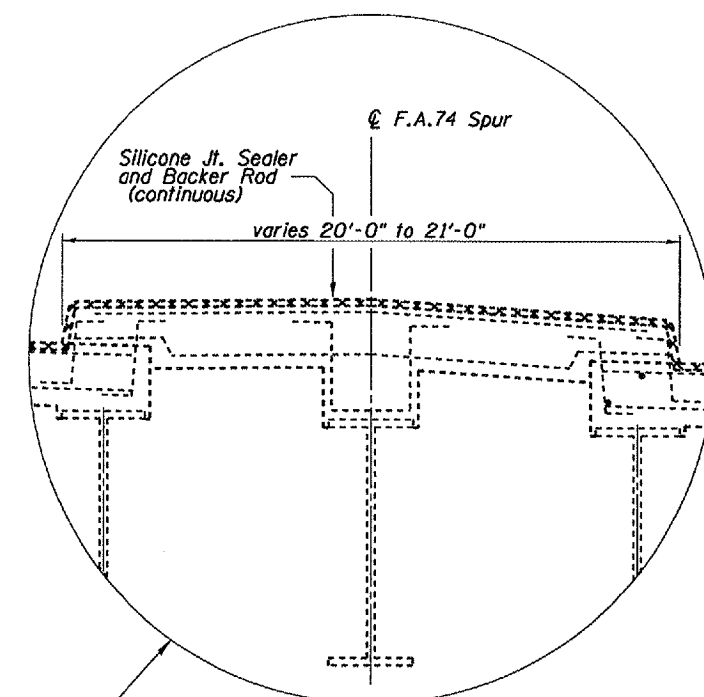
All exposed and accessible steel surfaces shall be blasted to near white condition, then metalized. In sidewalk, median, and parapet wall areas w/o steel, the concrete shall be cleaned by blasting and blowing clean until dust-free and dry prior to sealant application. Metalizing of concrete is not required.



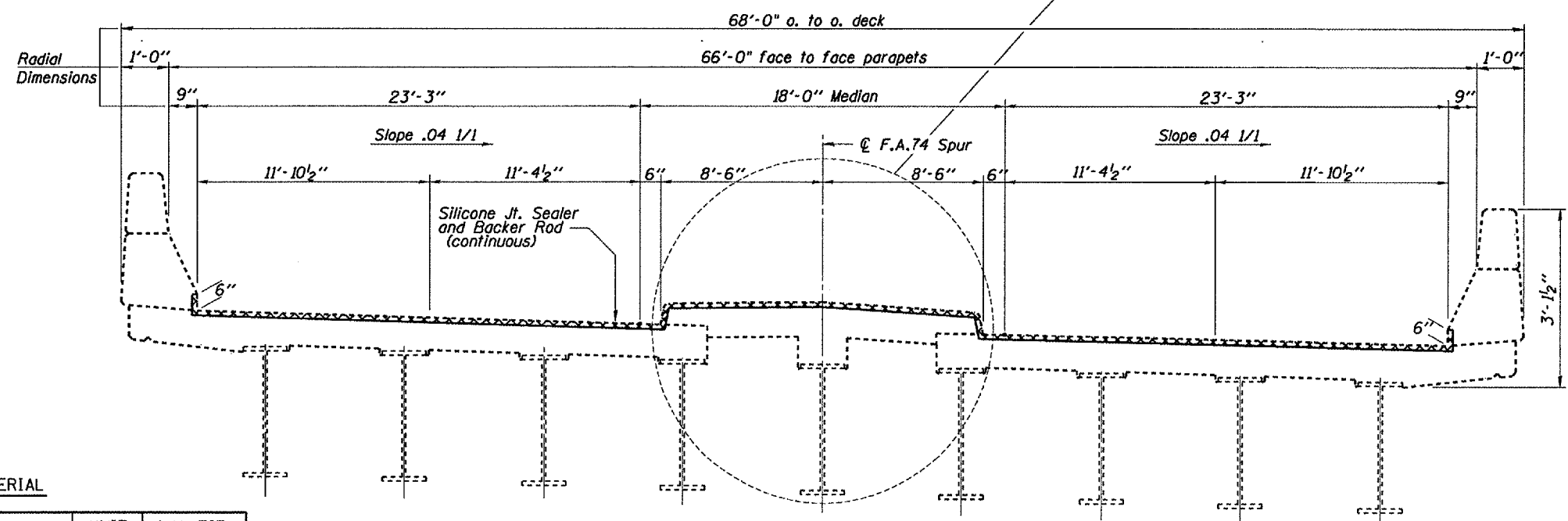
Backer Rod diameter 25 % greater than joint opening at time of installation.

NOTE.
Dimension "B" min. = 2 x "A" (where "A" = 3/8" to 5/8").
Height of bonding surface should be approximately (2x) sealant min. thickness. Dimension "C" varies between 1" - 1 1/2".

PROPOSED BRIDGE JOINT SEALER DETAIL



PROPOSED MEDIAN JOINT DETAIL



EXISTING BRIDGE DECK CROSS SECTION
SN. 090-0095 (Looking East near Abutment)

BILL OF MATERIAL

ITEM	UNIT	QUANTITY
BLAST CLEANING BRIDGE JOINT STEEL	FOOT	165
THERMAL SPRAYING (METALIZING) BRIDGE JOINT STEEL	FOOT	115
SILICONE JOINT SEALER	FOOT	165
BITUMINOUS REMOVAL (MISCELLANEOUS)	SO.YD.	8.0
BITUMINOUS MIXTURE FOR PATCHING	TON	1.0

REVISIONS	
NAME	DATE

SN 090-0095
II. 122E over I-155

ILLINOIS DEPARTMENT OF TRANSPORTATION

DECK & JOINT DETAILS

SCALE: VERT. _____
HORIZ. _____
DATE 08-16-2005

DRAWN BY CEJ
CHECKED BY _____

NOTE
ALL DIMENSIONS TAKEN AT RIGHT ANGLE TO ROADWAY CENTERLINE.

PLOT DATE * NUMBER
FILE NAME * #FILES
PLOT SCALE * #SHEETS
REFERENCE * #REFS