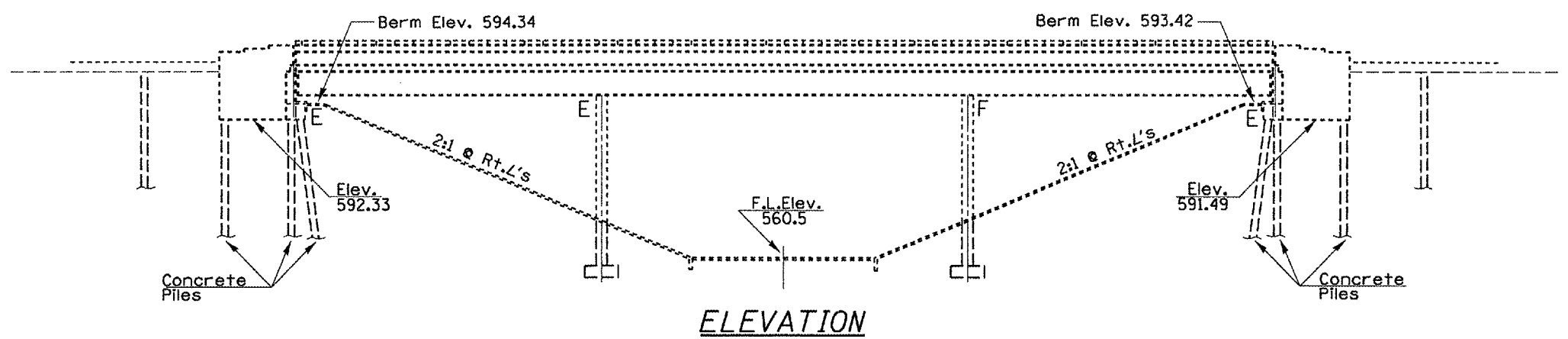
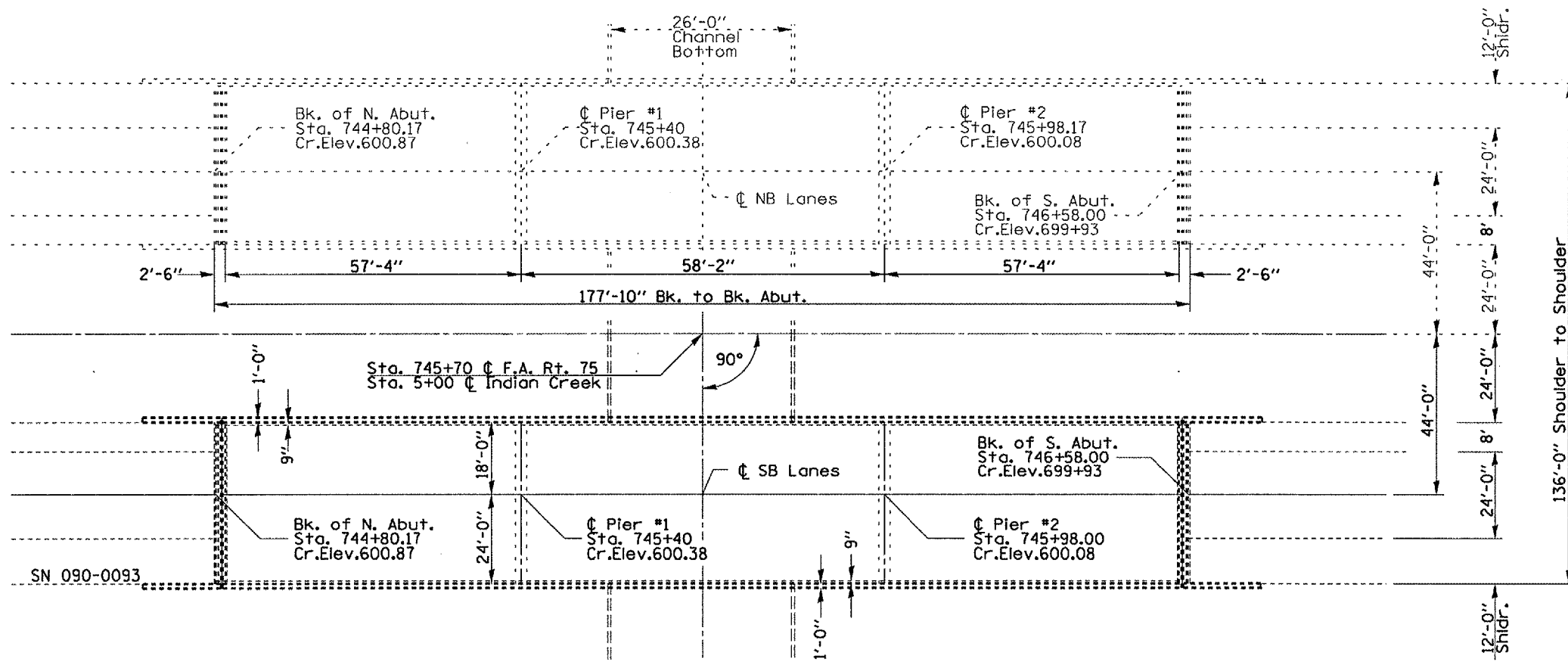


F.A.I. RTE.	SECTION	COUNTY	TOTAL SHEETS	SHEET NO.
155	-	TAZEWELL	27	23
STA. 744+80.17 TO STA. 746+58.00				
FED. ROAD DIST. NO. 4 ILLINOIS FED. AID PROJECT				
• 04 Joint Repair 2006				



ELEVATION



PLAN VIEW

GENERAL NOTES

PLAN DIMENSIONS AND DETAILS RELATIVE TO EXISTING STRUCTURE HAVE BEEN TAKEN FROM EXISTING PLANS AND ARE SUBJECT TO NOMINAL CONSTRUCTION VARIATIONS. IT SHALL BE THE CONTRACTOR'S RESPONSIBILITY TO VERIFY SUCH DIMENSIONS AND DETAILS IN THE FIELD AND MAKE NECESSARY APPROVED ADJUSTMENTS PRIOR TO WORK OR THE ORDERING OF MATERIALS. SUCH VARIATIONS SHALL NOT BE CAUSE FOR ADDITIONAL COMPENSATION FOR A CHANGE IN THE SCOPE OF THE WORK. HOWEVER, THE CONTRACTOR WILL BE PAID FOR THE QUANTITY ACTUALLY FURNISHED AT THE UNIT PRICE BID FOR THE PROJECT.

- USE 2-PART RAPID-CURE 100% SILICONE SEALER ONLY - NO OPTION. SEE SPECIAL PROVISIONS.

FOR INFORMATION ONLY

PLT DATE * STATES
FILE NAME * #FILE#
PLT SCALE * #SCALE#
REFERENCE * #REF#

SN 090-0093
I-155 SB over
Indian Crk.

REVISIONS	
NAME	DATE

ILLINOIS DEPARTMENT OF TRANSPORTATION

PLAN AND ELEVATION

SCALE: VERT.
HORIZ.
DATE 07-14-2005

DRAWN BY CEJ
CHECKED BY