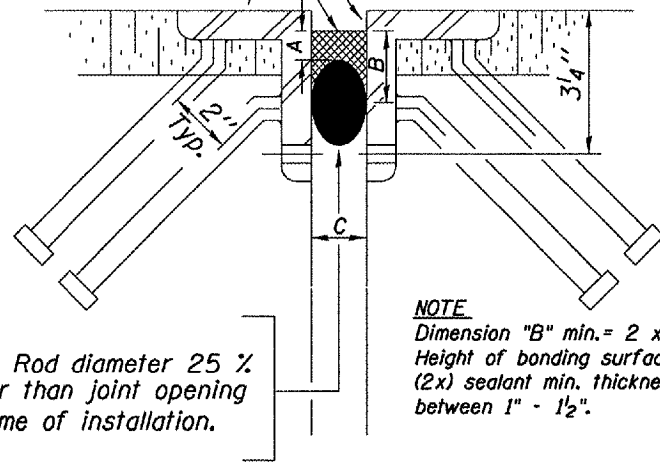


F.A.I. RTE.	SECTION	COUNTY	TOTAL SHEETS	SHEET NO.
155		TAZENELL	27	26
STA. 744+80.17 TO STA. 746+58.00				
FED. ROAD DIST. NO. 4 ILLINOIS FED. AID PROJECT				
• 04 Joint Repair 2006				

Two-Part, Rapid-Cure 100% Silicone Jt. Sealer

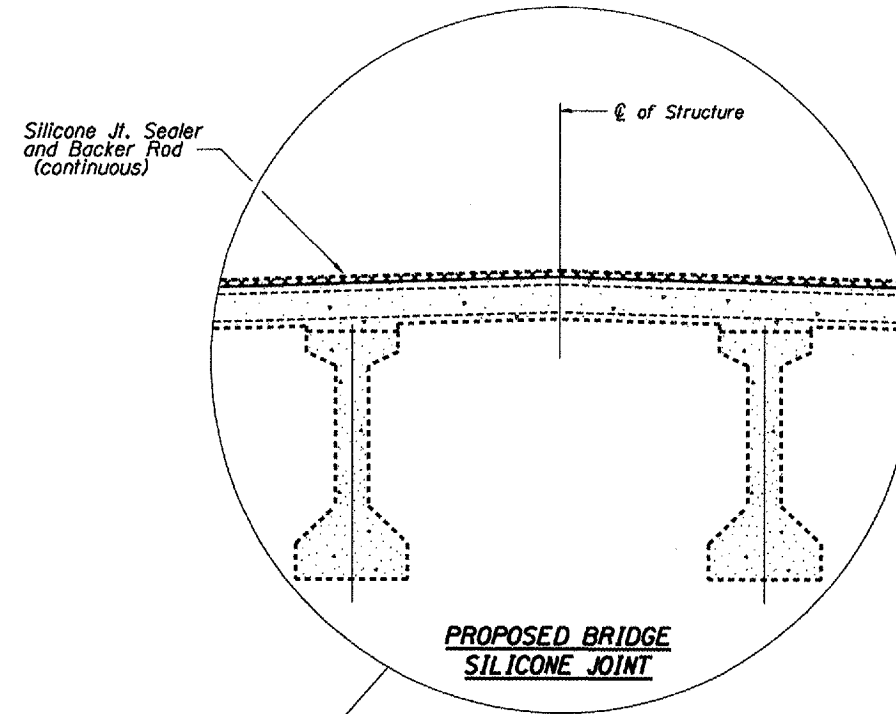
All exposed and accessible steel surfaces shall be blasted to near white condition, then metalized. In sidewalk, median, and parapet wall areas w/o steel, the concrete shall be cleaned by blasting and blowing clean until dust-free and dry prior to sealant application. Metalizing of concrete is not required.



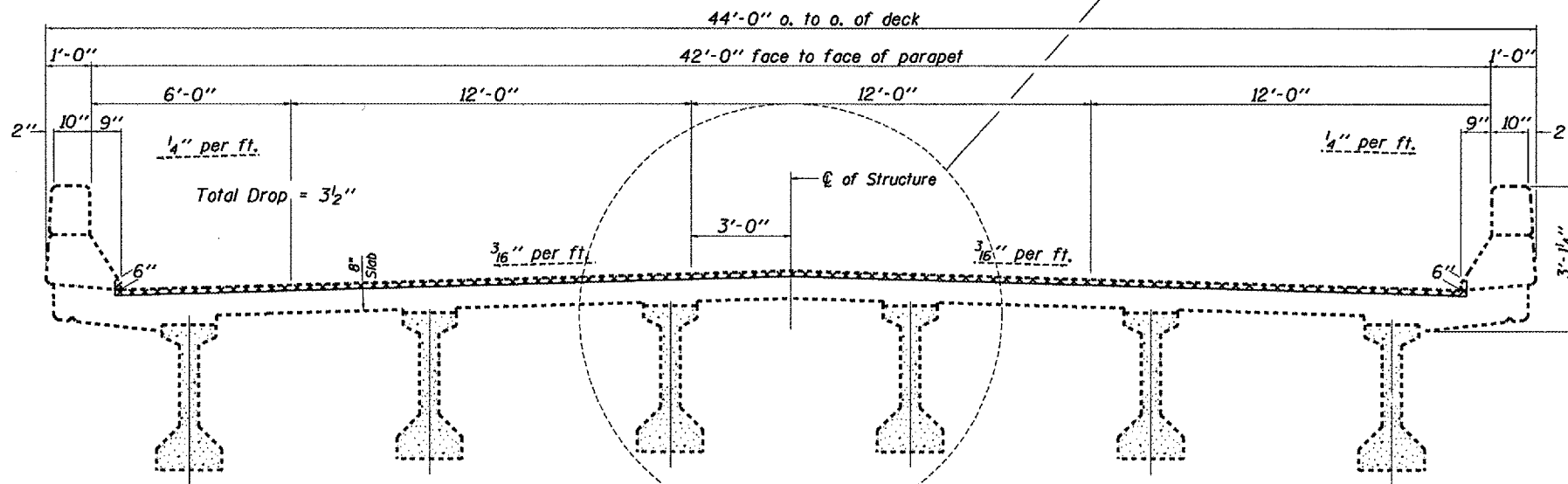
Backer Rod diameter 25 % greater than joint opening at time of installation.

**NOTE**  
Dimension "B" min. = 2 x "A" (where "A" = 3/8" to 5/8"). Height of bonding surface should be approximately (2x) sealant min. thickness. Dimension "C" varies between 1" - 1 1/2".

**PROPOSED BRIDGE JOINT SEALER DETAIL**



**PROPOSED BRIDGE SILICONE JOINT**



**NEAR PIER**

**NEAR MIDSPAN**

**CROSS SECTION**

(Looking S.B. in the direction of traffic)

**BILL OF MATERIAL**

ITEM	UNIT	QUANTITY
BLAST CLEANING BRIDGE JOINT STEEL	FOOT	85
BLAST CLEANING PPC BEAM ENDS	FOOT	48
THERMAL SPRAYING (METALIZING) BRIDGE JOINT STEEL	FOOT	82
SILICONE JOINT SEALER	FOOT	85
THERMAL SPRAYING (METALIZING) PPC BEAM ENDS	SO.FT.	279

PLOT DATE \* OWNER \* SCALE \* REFERENCE \* SHEET NO.

REVISIONS	
NAME	DATE

ILLINOIS DEPARTMENT OF TRANSPORTATION

**DECK AND JOINT DETAILS**

SCALE: VERT. HORIZ. DATE 07-21-2005

SN 090-0093 I-155 SB over Indian Crk.

DRAWN BY CEJ CHECKED BY