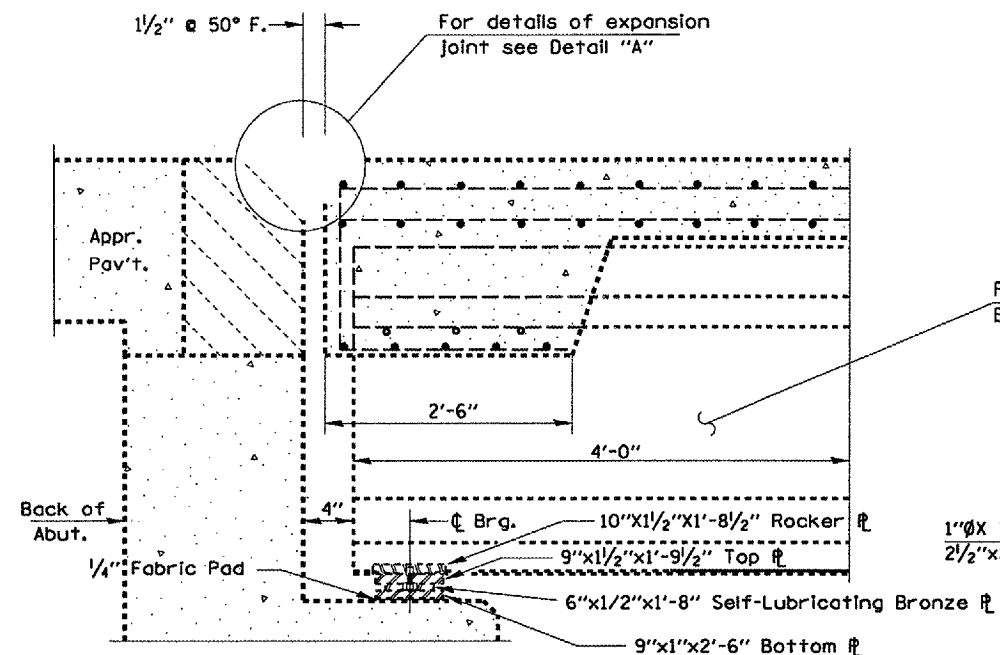


F.A.I. RTE.	SECTION	COUNTY	TOTAL SHEETS	SHEET NO.
155		TAZEWELL	27	27
STA. 744+80.17 TO STA. 746+58.00				
FED. ROAD DIST. NO. 4 ILLINOIS FED. AID PROJECT				
• 04 Joint Rep'd 2006				

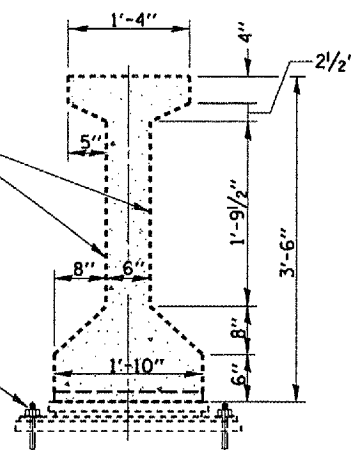


**ABUTMENT/I-BEAM END SECTION**

(North Abutment)

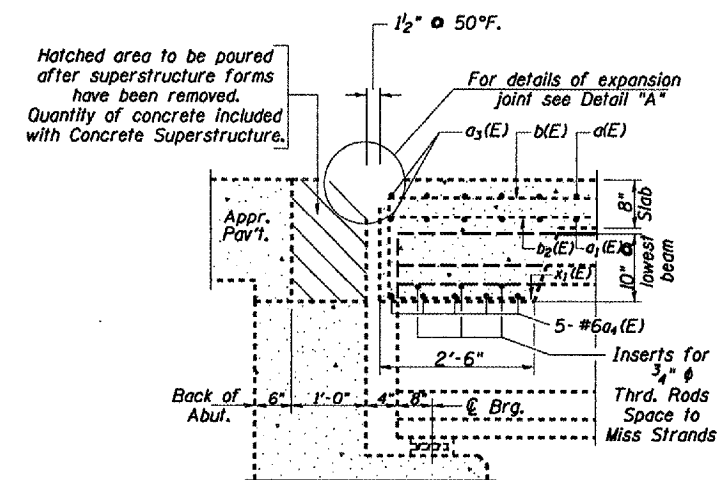
PPC I-Beam Surfaces for Blasting, and Metalizing

1"ØX 12" Anchor Bolt (Typ.) with 2 1/2"x2 1/2"x5/16" Flat Washers



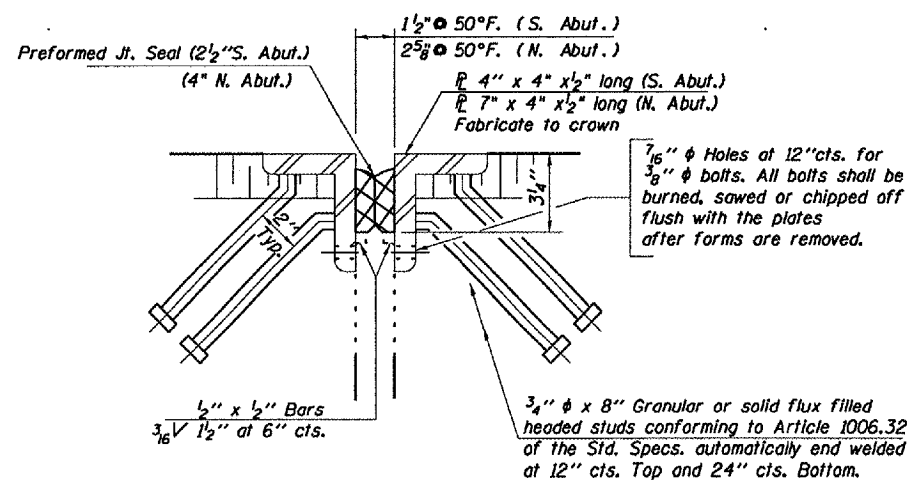
**PPC I-BEAM CROSS-SECTION**

(6 I-Beams/12 Beam Ends)

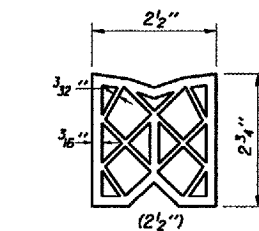


**SECTION THRU ABUTMENT**

Note  
All horizontal dimensions are at right angles to beam ends.

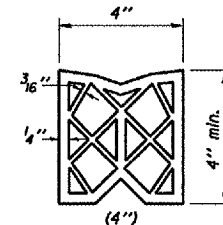


**DETAIL A**



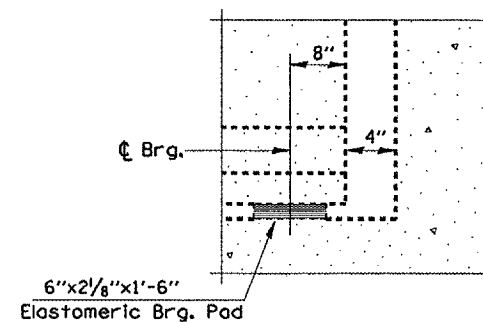
**EXISTING PREFORMED JOINT SEAL**

(S. Abut. only)

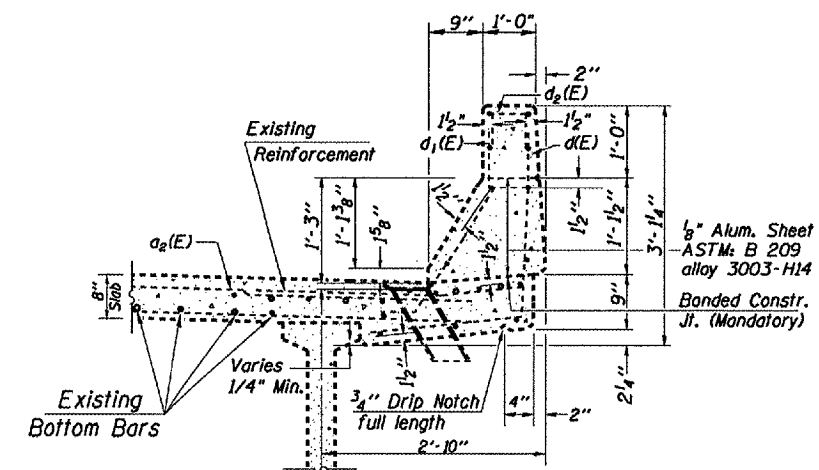


**EXISTING PREFORMED JOINT SEAL**

(N. Abut. only)



**SOUTH ABUTMENT SECTION**



**SECTION THRU PARAPET**

Note:  
All horizontal dimensions are at right angles to beam ends. Beam length for metalizing shall be measured 4 feet from end and cover all visible side surfaces. Surface area of I-Beam is 5.8 sq.ft. per lineal beam foot.  
All bearings and plates shall have pack rust sand blasted clean prior to being metalized as beam ends are processed. Cost to be included in "THERMAL SPRAYING (METALIZING) PPC BEAM ENDS".

PLOT DATE \* HOURS  
PLOT SCALE \* SHEETS  
REFERENCE \* SHEET

REVISIONS	
NAME	DATE

ILLINOIS DEPARTMENT OF TRANSPORTATION  
**SUPERSTRUCTURE DETAILS**  
SCALE: VERT. DATE 07-22-2005  
DRAWN BY CEJ  
CHECKED BY

SN 090-0093  
I-155 SB over  
Indian Crk.