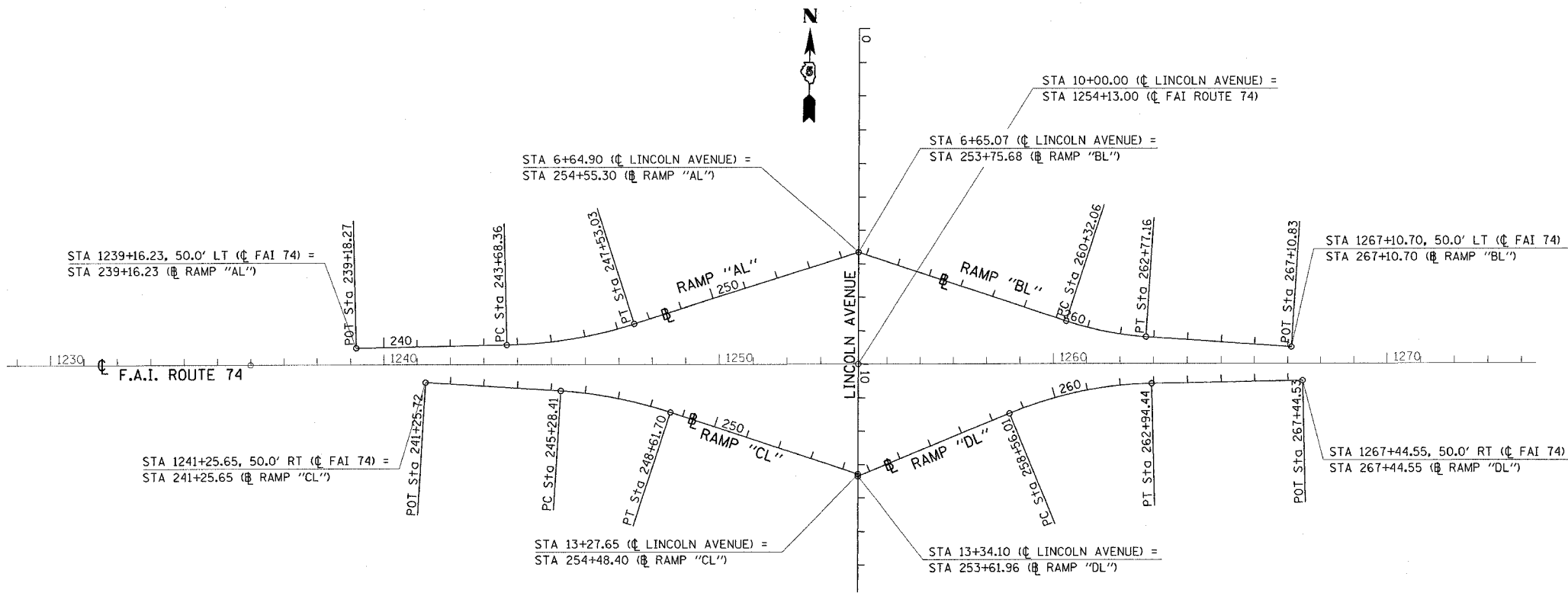
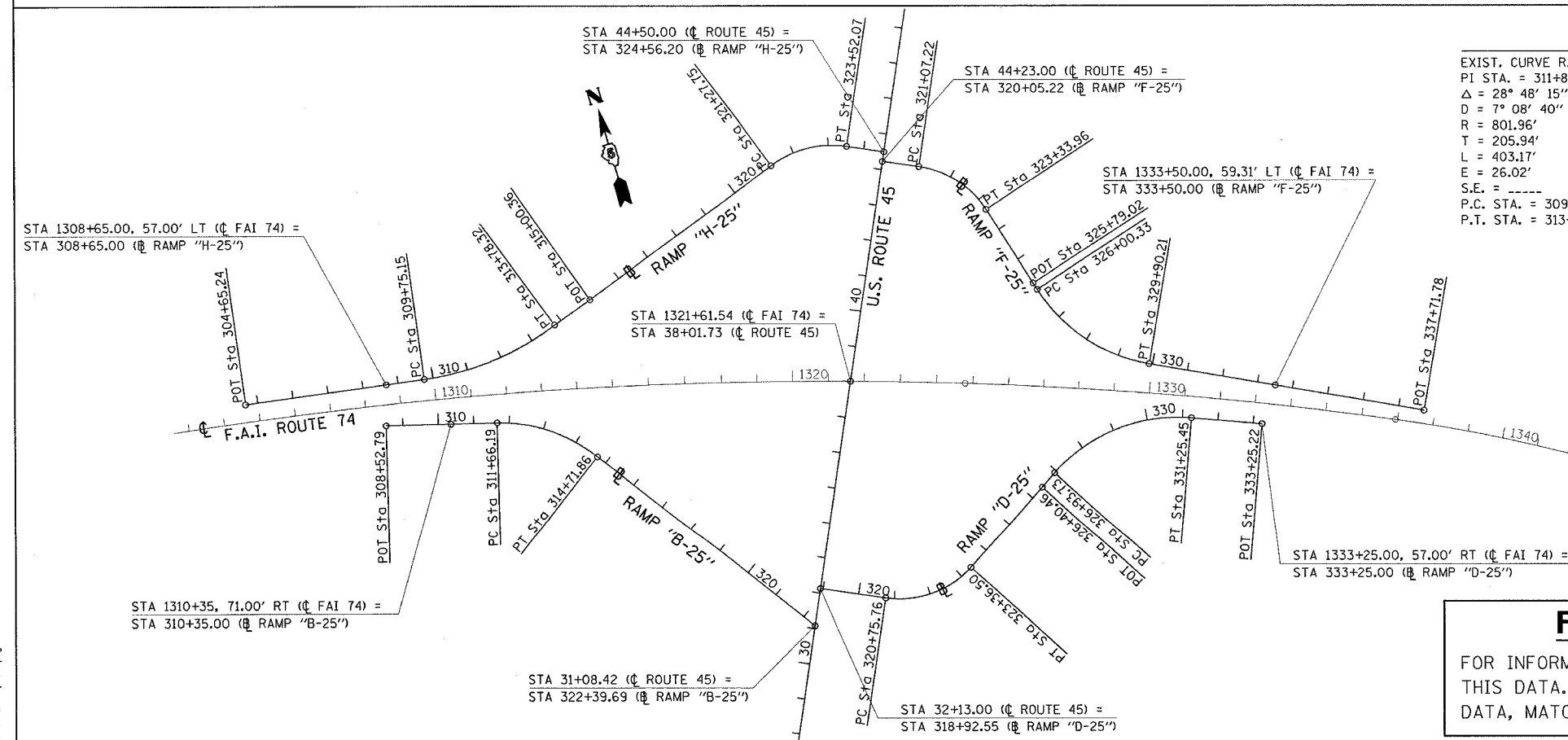


CONTRACT NO. 70141			
F.A.I. RTE.	SECTION	COUNTY	TOTAL SHEETS
74	*	CHAMPAIGN	115
			SHEET NO. 44
* 1015-1-RS-1,14-1(R)RS & 6RS-3)			



LINCOLN AVENUE	
EXIST. CURVE RAMP "AL"	EXIST. CURVE RAMP "BL"
PI STA. = 245+62.04	PI STA. = 261+55.26
$\Delta = 16^\circ 32' 33''$ (LT)	$\Delta = 14^\circ 23' 58''$ (LT)
D = 4° 18' 02"	D = 5° 52' 29"
R = 1,332.31'	R = 975.27'
T = 193.68'	T = 123.20'
L = 384.67'	L = 245.10'
E = 14.00'	E = 7.75'
S.E. = -----	S.E. = -----
P.C. STA. = 243+68.36	P.C. STA. = 260+32.06
P.T. STA. = 247+53.03	P.T. STA. = 262+77.16
EXIST. CURVE RAMP "CL"	EXIST. CURVE RAMP "DL"
PI STA. = 246+95.93	PI STA. = 260+77.73
$\Delta = 14^\circ 20' 10''$ (RT)	$\Delta = 21^\circ 04' 53''$ (RT)
D = 4° 18' 05"	D = 4° 48' 30"
R = 1,332.03'	R = 1,191.56'
T = 167.52'	T = 221.72'
L = 333.29'	L = 438.43'
E = 10.49'	E = 20.45'
S.E. = -----	S.E. = -----
P.C. STA. = 245+28.41	P.C. STA. = 258+56.01
P.T. STA. = 248+61.70	P.T. STA. = 262+94.44



U.S. ROUTE 45			
EXIST. CURVE RAMP "H-25" (1)	EXIST. CURVE RAMP "H-25" (2)	EXIST. CURVE RAMP "B-25"	EXIST. CURVE RAMP "F-25" (1)
PI STA. = 311+81.09	PI STA. = 322+46.05	PI STA. = 313+25.32	PI STA. = 322+27.99
$\Delta = 28^\circ 48' 15''$ (LT)	$\Delta = 44^\circ 58' 52''$ (RT)	$\Delta = 39^\circ 18' 54''$ (RT)	$\Delta = 48^\circ 49' 16''$ (RT)
D = 7° 08' 40"	D = 20° 03' 08"	D = 12° 51' 42"	D = 21° 31' 54"
R = 801.96'	R = 285.73'	R = 445.48'	R = 266.10'
T = 205.94'	T = 118.30'	T = 159.13'	T = 120.77'
L = 403.17'	L = 224.32'	L = 305.67'	L = 226.74'
E = 26.02'	E = 23.52'	E = 27.57'	E = 26.12'
S.E. = -----	S.E. = -----	S.E. = -----	S.E. = -----
P.C. STA. = 309+75.15	P.C. STA. = 321+27.75	P.C. STA. = 311+66.19	P.C. STA. = 321+07.22
P.T. STA. = 313+78.32	P.T. STA. = 323+52.07	P.T. STA. = 314+71.86	P.T. STA. = 323+33.96
EXIST. CURVE RAMP "F-25" (2)	EXIST. CURVE RAMP "D-25" (1)	EXIST. CURVE RAMP "D-25" (2)	
PI STA. = 328+07.22	PI STA. = 322+17.87	PI STA. = 329+26.46	
$\Delta = 47^\circ 25' 13''$ (LT)	$\Delta = 56^\circ 34' 41''$ (LT)	$\Delta = 53^\circ 03' 14''$ (RT)	
D = 12° 09' 45"	D = 21° 41' 57"	D = 12° 17' 21"	
R = 471.08'	R = 264.05'	R = 466.24'	
T = 206.89'	T = 142.11'	T = 232.73'	
L = 389.89'	L = 260.74'	L = 431.72'	
E = 43.43'	E = 35.81'	E = 54.86'	
S.E. = -----	S.E. = -----	S.E. = -----	
P.C. STA. = 326+00.33	P.C. STA. = 320+75.76	P.C. STA. = 326+93.73	
P.T. STA. = 329+90.21	P.T. STA. = 323+36.50	P.T. STA. = 331+25.45	

PLOT DATE = 11/18/2005
 FILE NAME = c:\pcc\mca\c507000\68\align7002.dgn
 PLOT SCALE = 200.0000 "/ IN.
 USER NAME = philiprj

FOR INFORMATION ONLY

FOR INFORMATION ONLY FIELD VERIFY BEFORE USING THIS DATA. WHERE EXISTING CONDITIONS VARY FROM DATA, MATCH EXISTING.

ILLINOIS DEPARTMENT OF TRANSPORTATION

ALIGNMENT LAYOUT

F.A.I. ROUTE 74
SECTION 1015-1-RS-1,14-1(R)RS & 6RS-3)
CHAMPAIGN COUNTY

SCALE: 1" = 200'
DATE: 10/30/05

DRAWN BY: CADD
CHECKED BY: