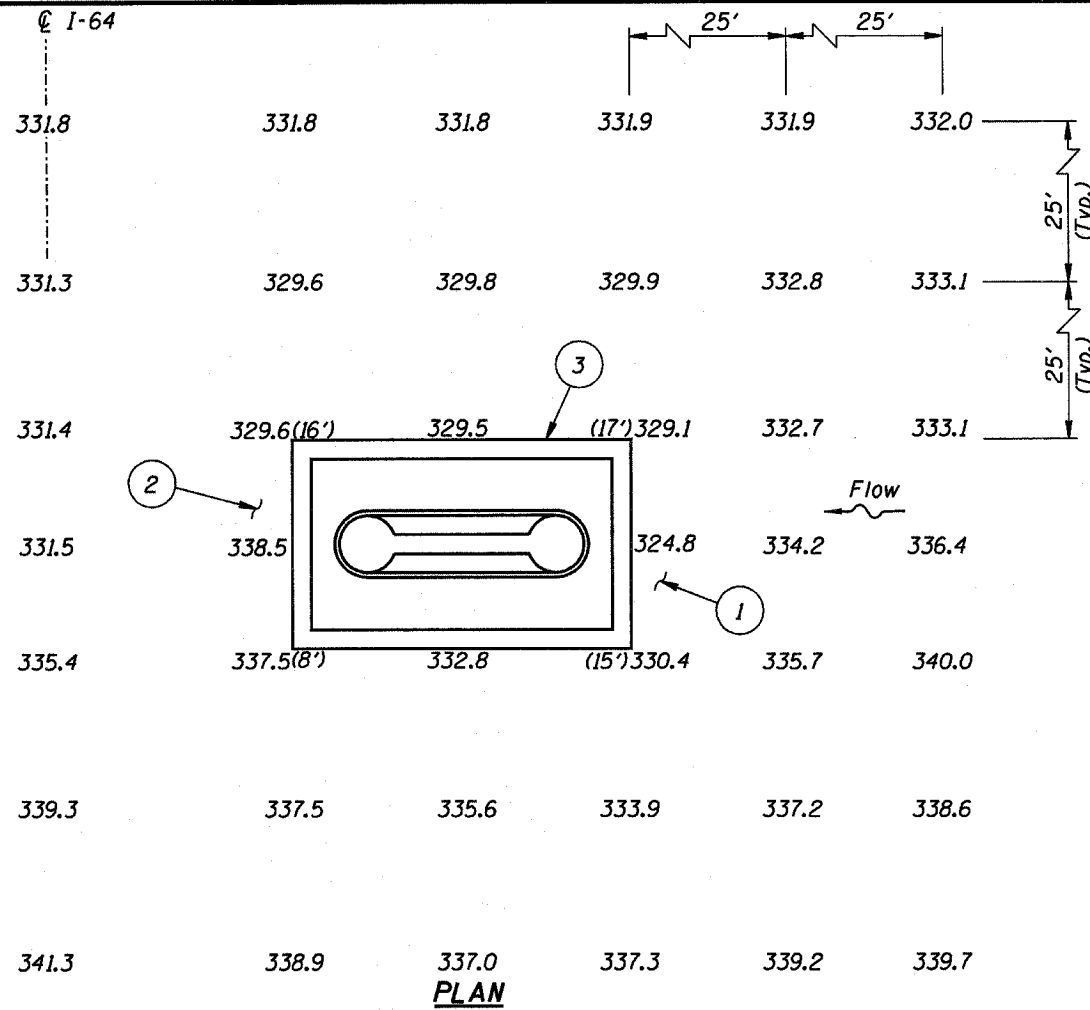


F.A.I. RTE.	SECTION	COUNTY	TOTAL SHEETS	SHEET NO.
64	97-3B-I-2	WHITE	15	10
STA.		TO STA.		
FED. ROAD DIST. NO.		ILLINOIS	FED. AID PROJECT	



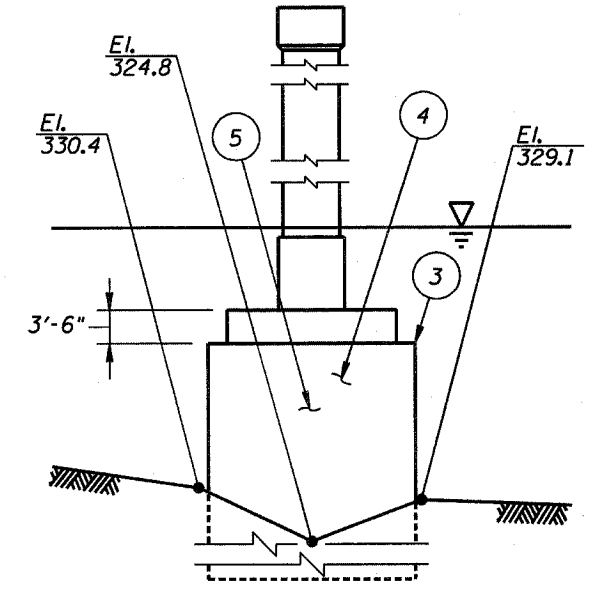
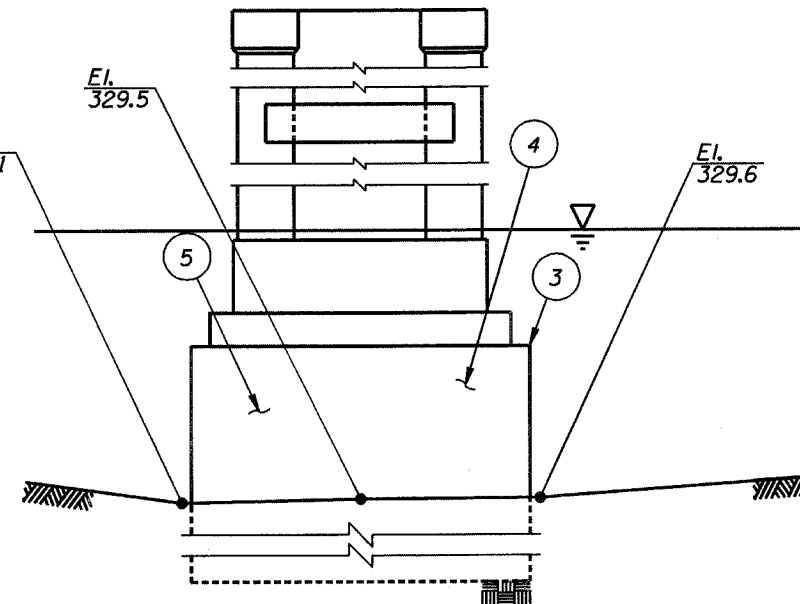
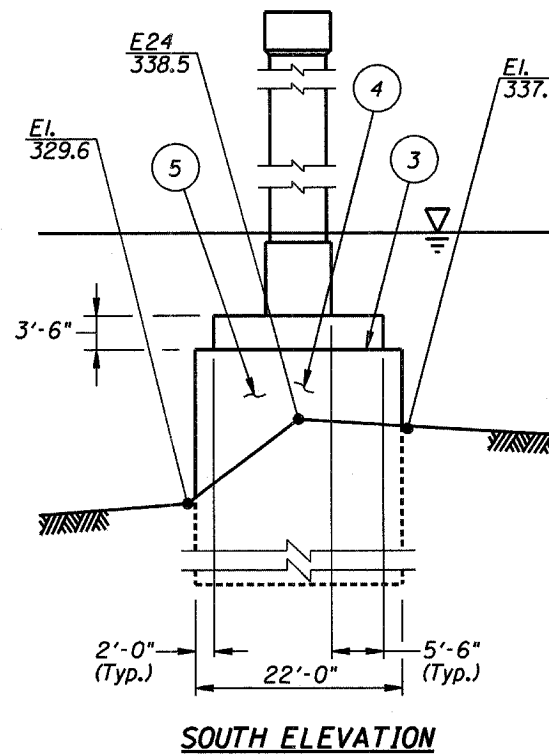
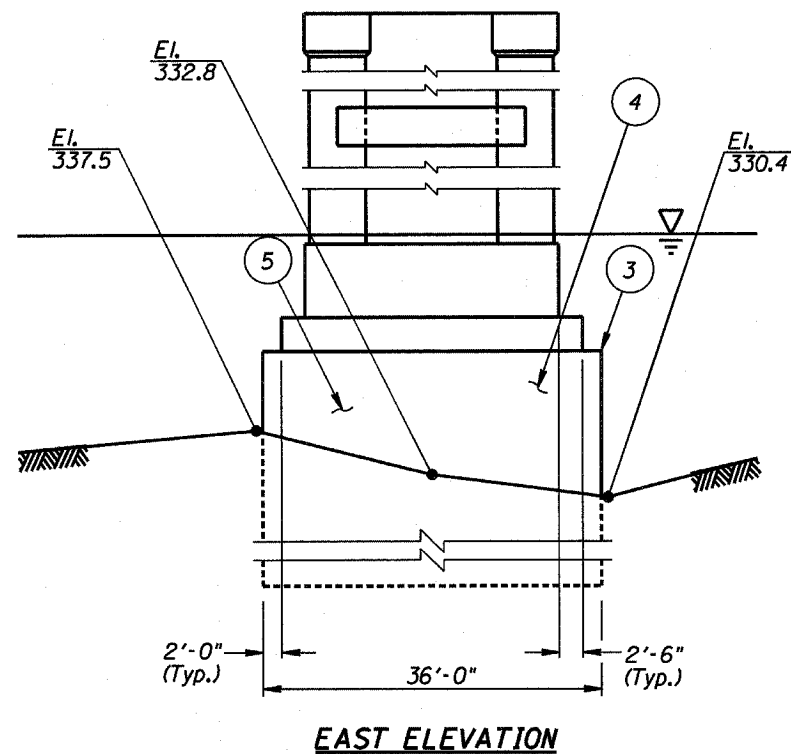
**Inspection Notes:**

- ① The channel bottom material typically consisted of loose sand and gravel, with up to 2 feet of probe rod penetration.
- ② The channel bottom material typically consisted of loose gravel, with up to 1 foot of probe rod penetration.
- ③ Seal exposure, with vertical limits as shown. No seal undermining detected.
- ④ Band of heavy concrete scale around pier perimeter, measuring 8 inches wide, located 4 feet below the top of the seal. The scale had a typical penetration of 6 inches and a maximum penetration of 1 foot.
- ⑤ No damage below waterline.

**General Notes:**

1. At the time of the inspection, the waterline was located approximately 14.4 feet below the bottom of the pier beam at Eastbound Pier 3. This corresponds to a waterline elevation of 358.1 feet, based on the 1966 design plans.
2. Soundings indicate the channel bottom elevation at the time of inspection and are measured in feet.

FOR INFORMATION ONLY



**WEST ELEVATION**

**NORTH ELEVATION**

**LEGEND:**

- 558.0 Channel Bottom Elevation
- ④ Indicates Inspection Note Number
- Pier Founded on Rock
- Channel Bottom Material
- (2') Vertical Exposure of Seal

<b>ILLINOIS DEPARTMENT OF TRANSPORTATION</b>		
I-64 OVER WABASH RIVER STRUCTURE NUMBER: 097-0004 <b>WESTBOUND PIER 4</b>		
Drawn By: PRH/DR	<b>COLLINS ENGINEERS</b> <small>123 North Wacker Drive Suite 300 Chicago, IL 60606 (312) 704-9300 www.collinsengr.com</small>	Date: JULY, 2005
Checked By: JEO		Scale: 1"=20'
Code: 419503-04		Figure No.: 17