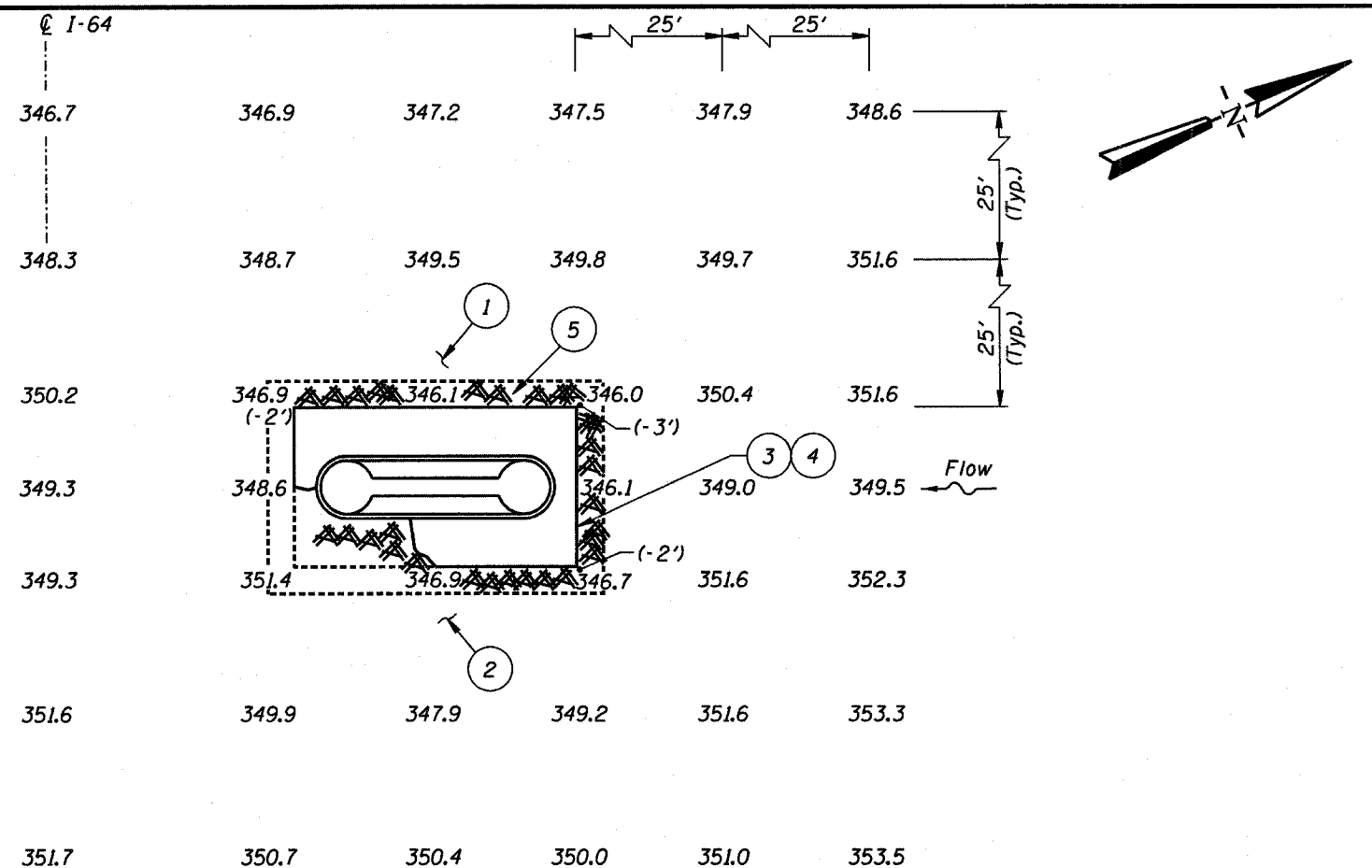


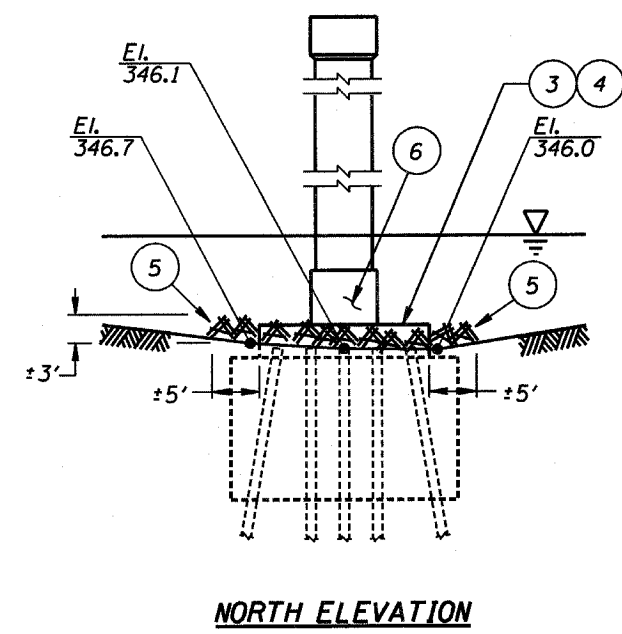
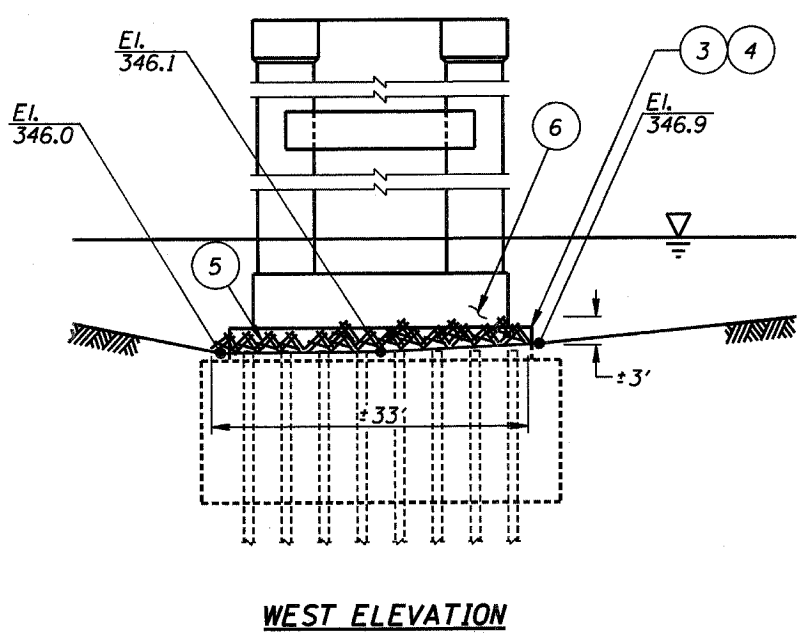
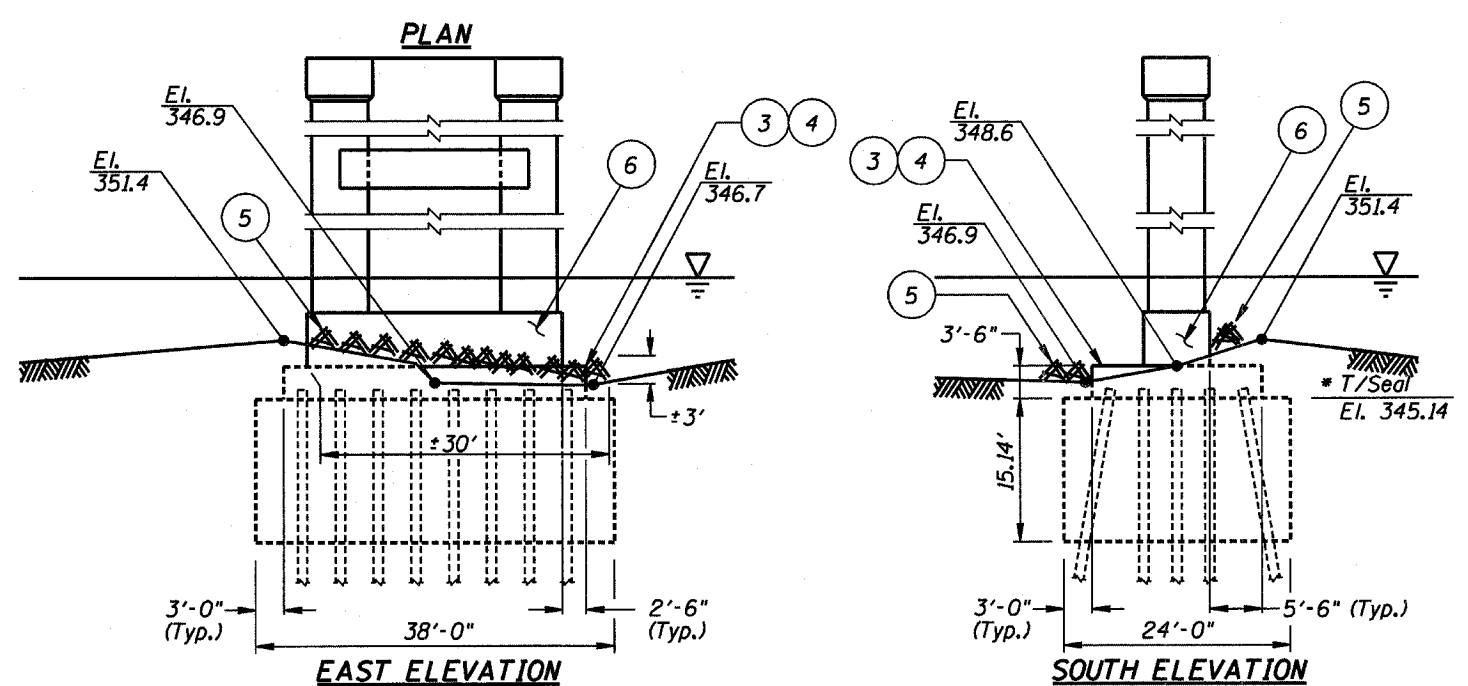
F.A.I. RTE.	SECTION	COUNTY	TOTAL SHEETS	SHEET NO.
64	97-3B-I-2	WHITE	15	14
STA.		TO STA.		
FED. ROAD DIST. NO.		ILLINOIS FED. AID PROJECT		



June 9 Inspection Notes:

- ① The channel bottom material typically consisted of loose sandy silt, with up to 1.5 feet of probe rod penetration.
- ② The channel bottom material typically consisted of soft silt, with up to 3 feet of probe rod penetration.
- ③ Footing exposure, with vertical limits as shown. In the area where the footing was exposed, no undermining was detected.
- ④ Timber formwork covered approximately 90 percent of the vertical concrete footing surface.
- ⑤ Heavy accumulation of timber debris, consisting of trees measuring up to 2 feet in diameter with associated branches.
- ⑥ No damage below waterline.

FOR INFORMATION ONLY



- LEGEND:**
- 558.0 Channel Bottom Elevation
 - ④ Indicates Inspection Note Number
 - Pier Founded on Rock
 - Channel Bottom Material
 - (2') Vertical Exposure of Footing

General Notes:

1. At the time of the inspection, the waterline was located approximately 14.4 feet below the bottom of the pier beam at Eastbound Pier 3. This corresponds to a waterline elevation of 358.1 feet, based on the 1966 design plans.
2. Soundings indicate the channel bottom elevation at the time of inspection and are measured in feet.

* Elevation per design drawing provided by IDOT.

ILLINOIS DEPARTMENT OF TRANSPORTATION		
I-64 OVER WABASH RIVER STRUCTURE NUMBER: 097-0004 WESTBOUND PIER 6		
Drawn By: PRH/DR	COLLINS ENGINEERS <small>123 North Wacker Drive Suite 300 Chicago, IL 60606 (312) 704-9300 www.collinsengr.com ILLINOIS PROFESSIONAL DESIGN FIRM LICENSE NO. 184-000993</small>	Date: JULY, 2005
Checked By: JEO		Scale: 1"=20'
Code: 419503-04		Figure No.: 21