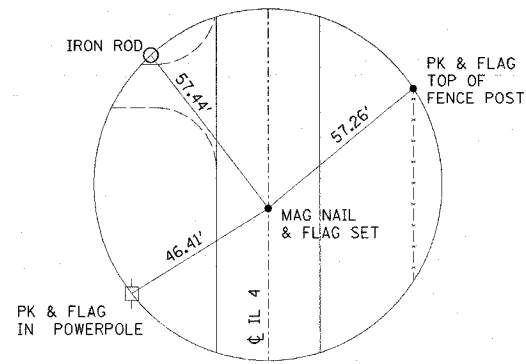


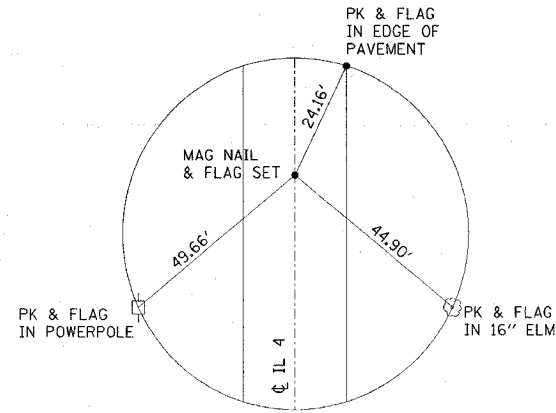
F.A.P. RTE.	SECTION	COUNTY	TOTAL SHEETS	SHEET NO.
314	108BR-1, 111BR-1	MADISON	123	6
STA.		TO STA.		
FED. ROAD DIST. NO.		ILLINOIS FED. AID PROJECT		

SN 060-0106

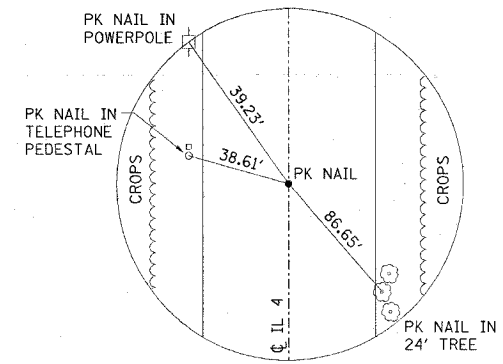
SN 060-0112



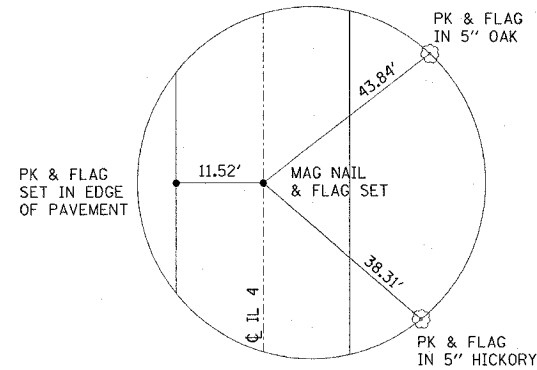
STA. 244+00



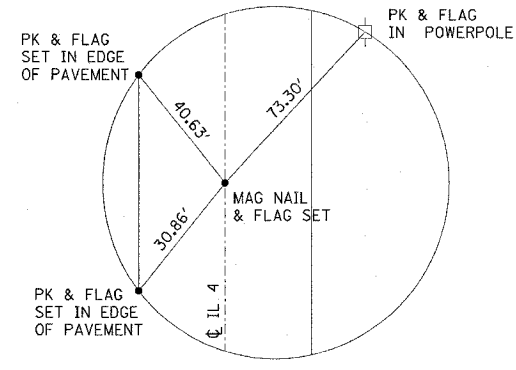
STA. 257+00



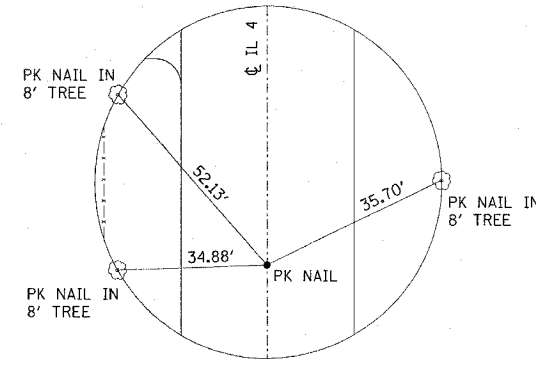
P.O.T. STA. 182+00



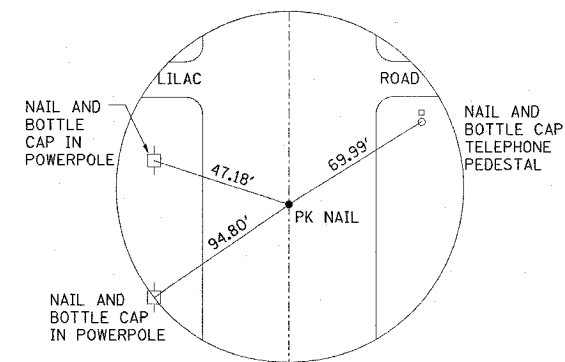
STA. 270+00



STA. 284+00



P.O.T. STA. 174+50±



P.O.T. STA. 141+01.02

**BENCHMARKS:**

SN 060-0106	STATION	OFFSET	ELEVATION
	241+18.95	19.73' RT	509.310
	274+03.85	21.95' LT	511.716

SN 060-0112	STATION	OFFSET	ELEVATION
	146+01	32' LT	472.15
	156+01	36' LT	464.49
	159+94	19' LT	457.71
	163+44	18' RT	458.09
	168+93	20' RT	469.13
	173+94	21' RT	477.59
	180+82	35' RT	473.00

PLOT DATE = 10/26/2005  
 FILE NAME = c:\p\projects\1082781\plan\p1n02781s06.dgn  
 PLOT SCALE = 50.000 / 1" = REF

REVISIONS	
NAME	DATE

ILLINOIS DEPARTMENT OF TRANSPORTATION

**TIE POINTS AND BENCHMARKS**

FAP ROUTE 314  
 SECTION 108BR-1, 111BR-1  
 MADISON COUNTY