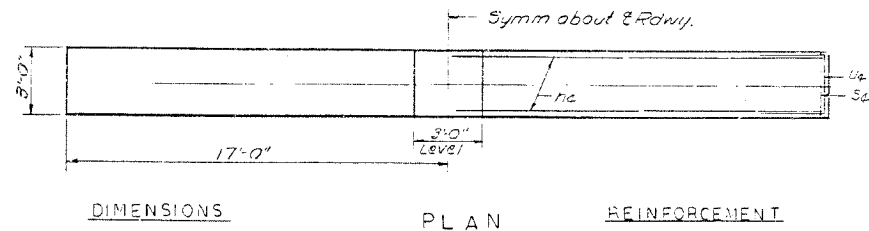


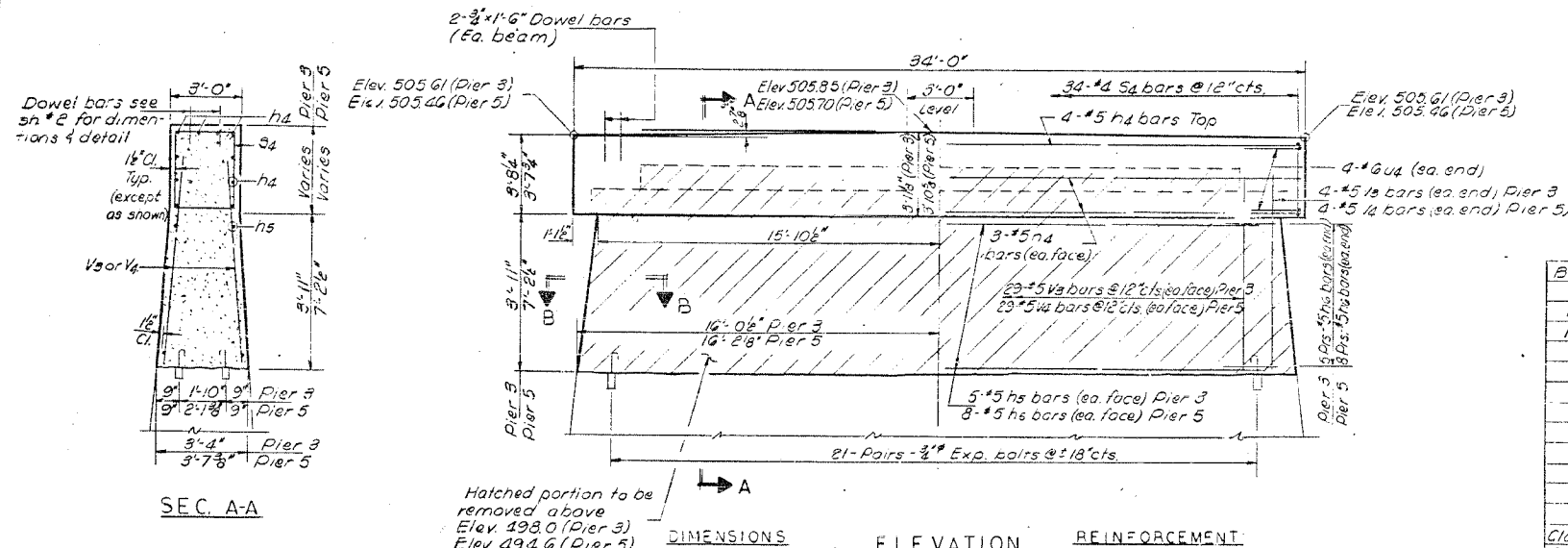
F.A.P. RTE.	SECTION	COUNTY	TOTAL SHEETS	SHEET NO.
314	108BR-I	MADISON	123	61
STA.		TO STA.		
FED. ROAD DIST. NO.	ILLINOIS FED. AID PROJECT			

STATE OF ILLINOIS
DEPARTMENT OF TRANSPORTATION

PROJECT NO.	66-108BR	COUNTY	MADISON	PIERS	3, 5	DATE	1/14
SHEET NO. 72							
11 SHEETS							

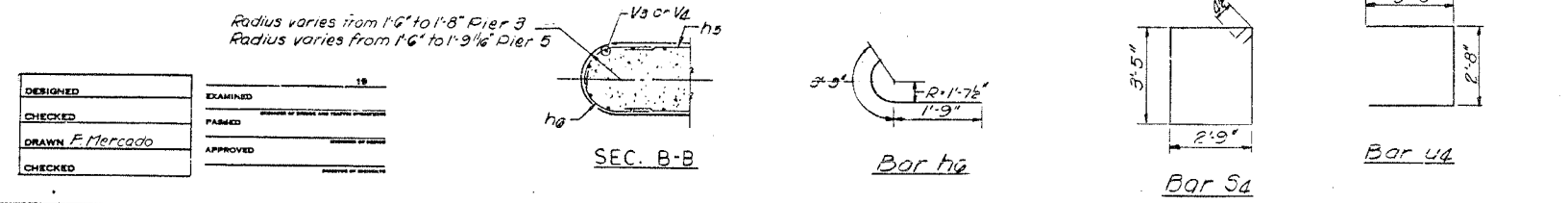


Notes:
All edges shall have 4" chamfers except as noted.
Expansion bolts shall be anchored in sound concrete.
Hatched area indicates concrete removal.



BILL OF MATERIAL

Bar	No.	Size	Length	Shape
h4	20	#5	33'-3"	—
h5	20	#5	28'-3"	—
h6	52	#5	5'-0"	C
S4	68	#4	13'-1"	□
U4	16	#6	8'-8"	□
V3	60	#5	5'-3"	—
V4	60	#5	8'-6"	—
Class I Concrete		Cu Yds.	70.7	
Reinforcement Bars		Lbs.	3,490	
Expansion Bolts 3/8" Each			84	
Concrete Removal Curbs			57	



DESIGNED	EXAMINED	19
CHECKED	DRAWN	F. Mercado
CHECKED	APPROVED	

AS REVISED 9-10-76 D.L.C.
PIERS 3 & 5
F.A. RT. 68 SEC. 108 BR
MADISON COUNTY
STA. 264+00

FOR INFORMATION ONLY

REVISIONS	
NAME	DATE

ILLINOIS DEPARTMENT OF TRANSPORTATION
EXISTING STRUCTURE PLANS
FAP ROUTE 314
SECTION 108BR-I
MADISON COUNTY

PLOT DATE = 10/26/2005
FILE NAME = c:\projects\1082701\plan\p1082701a05.dgn
PLOT SCALE = 1/8" = 1'-0"
REFERENCE = SHEET #