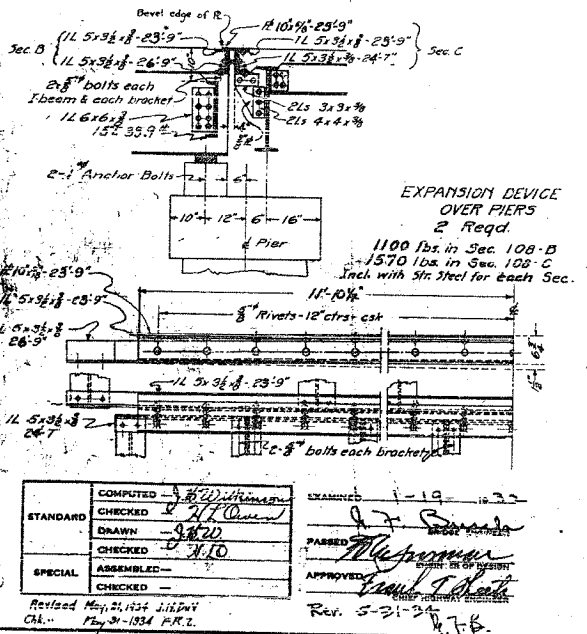
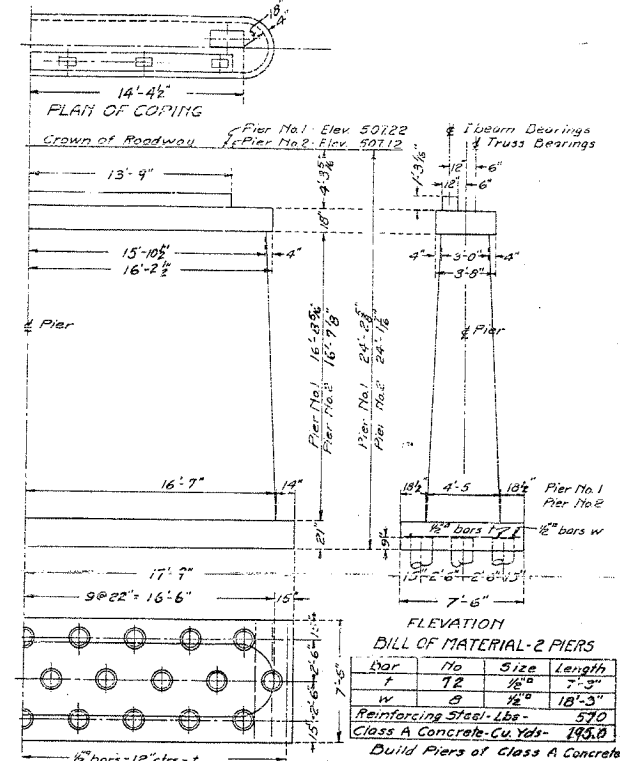
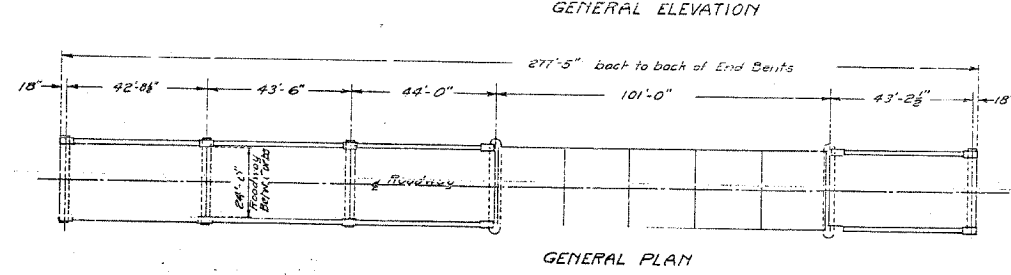
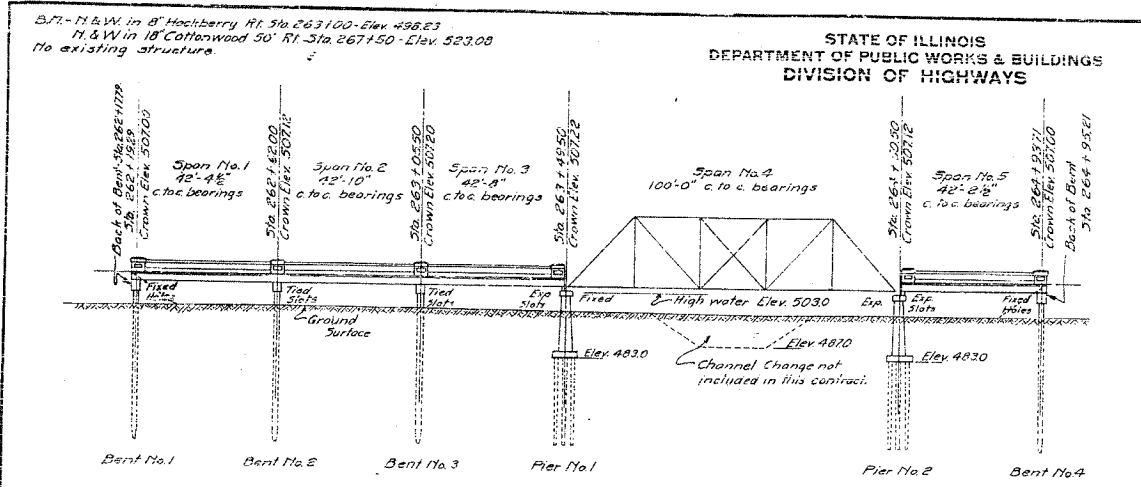


F.A.P. RTE.	SECTION	COUNTY	TOTAL SHEETS	SHEET NO.
314	108BR-I	MADISON	123	43
STA.		TO STA.		
FED. ROAD DIST. NO.		ILLINOIS FED. AID PROJECT		

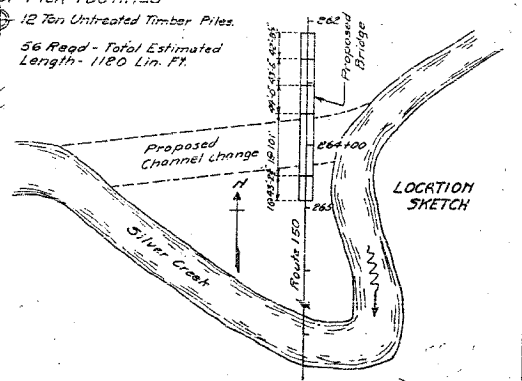
STATE OF ILLINOIS
DEPARTMENT OF PUBLIC WORKS & BUILDINGS
DIVISION OF HIGHWAYS

DESIGNED BY	REC.	COUNTY	SCALE	DATE
USD	10/23	MADISON	1/2"	47

SHEET NO. 1
3 SHEETS



Item	SUPER I. Beam	SUPER TRUSS	PIERS	BENTS	TOTAL SEC. B	TOTAL SEC. C
Class X Concrete - Cu. Yds.	126.1	59.8		40.3	40.3	185.9
Class A Concrete - Cu. Yds.			195.0		195.0	
Handrail Concrete - Cu. Yds.	20.5				20.5	
Reinforcing Steel - Lbs.	36900	15420	570		570	47320
Structural Steel - Lbs.	122270	119700				241970
Test Piles - concrete				2	2	
Untreated Timber Piles - Lin. Ft.			1120		1120	
Concrete Piles - Lin. Ft.				664	664	
Floor Drains	24	20				44
Name Plate	1					
Test Piles - Timber			2		2	1



Excavated material shall not be wasted within the high water area of the stream.

Contractor to drive 2 concrete and 2 timber test piles as directed by the engineer before casting or ordering piles.

COMPLETED	10/23/47	EXAMINED	1-19-47
STANDARD CHECKED	J.H. Wilson	PASSED	J.F. Smith
DRAWN	J.H. Wilson	APPROVED	Carroll J. Smith
CHECKED	J.H. Wilson		
SPECIAL ASSEMBLED			
CHECKED			

Revised May 2, 1954 J.H.W.
Ch. 12-31-1954 P.R.Z.

FOR INFORMATION ONLY

NAME	DATE

ILLINOIS DEPARTMENT OF TRANSPORTATION
EXISTING STRUCTURE PLANS
FAP ROUTE 314
SECTION 108BR-I
MADISON COUNTY

PLOT DATE = 10/16/2005
FILE NAME = c:\pno\pno\meta\w02701\plan\plan02701a06.dgn
PLOT SCALE = 50.000 / 1"
REFERENCE = #REF#