

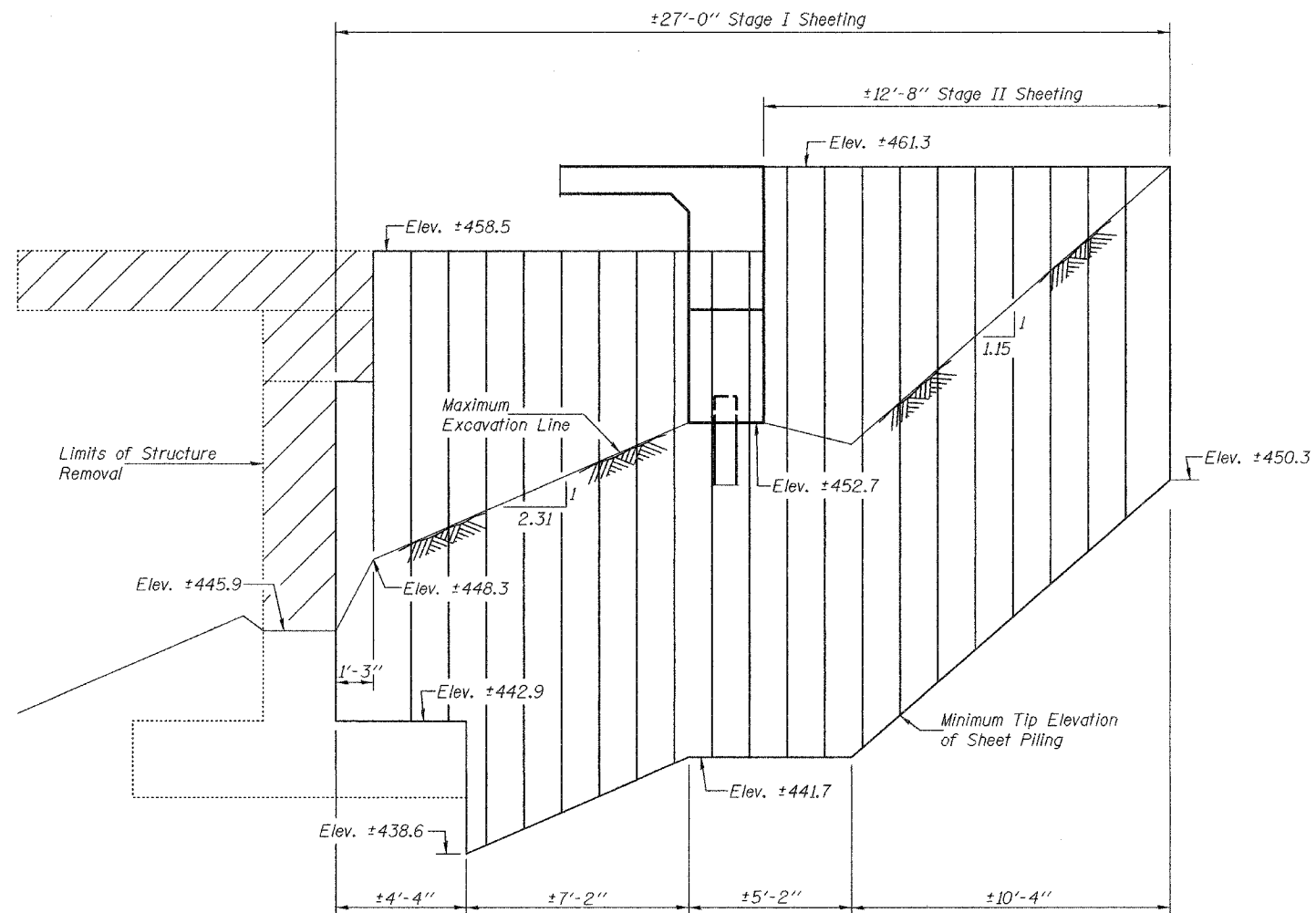
STATE OF ILLINOIS
DEPARTMENT OF TRANSPORTATION

ROUTE NO.	SECTION	COUNTY	SHEET NO.	SHEET NO.
FAP 314	111BR-1	MADISON	123	93
FED. ROAD DIST. NO. 7	ILLINOIS	FED. AID PROJECT-		

Contract No. 76454

SHEET NO. 3

17 SHEETS



TEMPORARY SHEET PILING AT ABUTMENTS

Notes:

- Slopes and distances shown along alignment of sheet piling.
- Minimum section modulus of sheet piling shall be 9 in³/ft.
- If the Contractor chooses to alter the temporary cantilevered sheet piling design requirements shown on the plans, a design submittal including plan details and calculations will be required for review and acceptance by the Engineer.
- The Contractor shall connect the first sheet to the existing abutment wall to ensure stability of sheets driven to the top of the existing footing. This connection shall be reviewed and accepted by the Engineer and included in the cost for Temporary Sheet Piling.

DESIGNED	CEH
CHECKED	DHC
DRAWN	BECKY M. LEACH
CHECKED	CEH & DHC

November 10, 2005
 EXAMINED *Thomas J. Romagosa*
 ENGINEER OF BRIDGE DESIGN
 PASSED *Ralph E. Anderson*
 ENGINEER OF BRIDGES AND STRUCTURES

TEMPORARY SHEET PILING
F.A.P. ROUTE 314 - SECTION 111BR-1
MADISON COUNTY
STATION 161+40.00
STRUCTURE NO. 060-0339