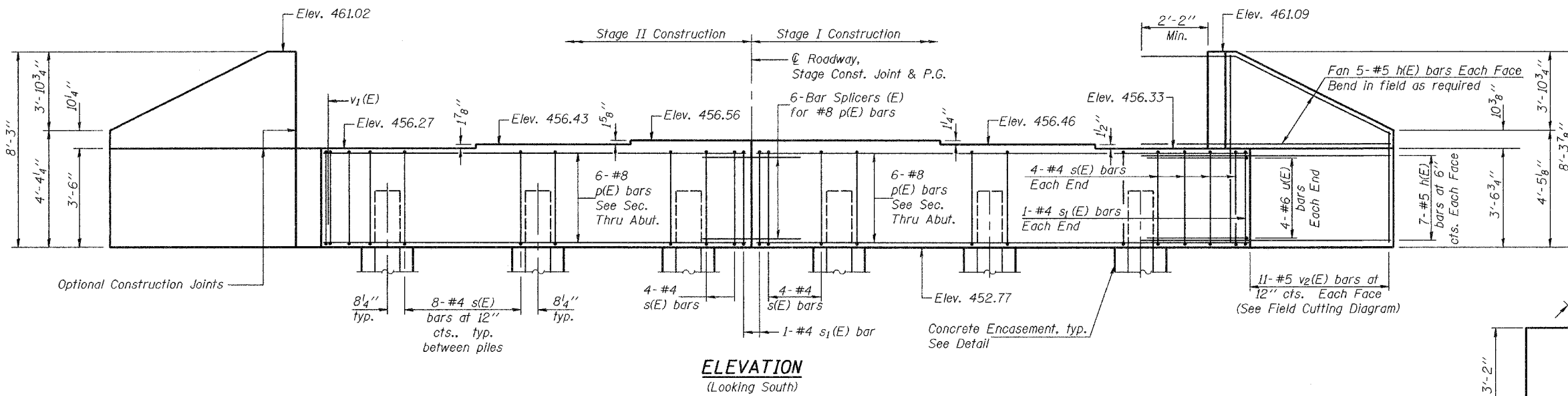


Notes: Four steps monolithically with cap.
Reinforcement bars designated (E)
shall be epoxy coated.

STATE OF ILLINOIS
DEPARTMENT OF TRANSPORTATION

ROUTE NO.	SECTION	COUNTY	SHEET	SHEET NO.
FAP 314	11BR-1	MADISON	123	104
FED. ROAD DIST. NO. 7	ILLINOIS	FED. AID PROJECT		

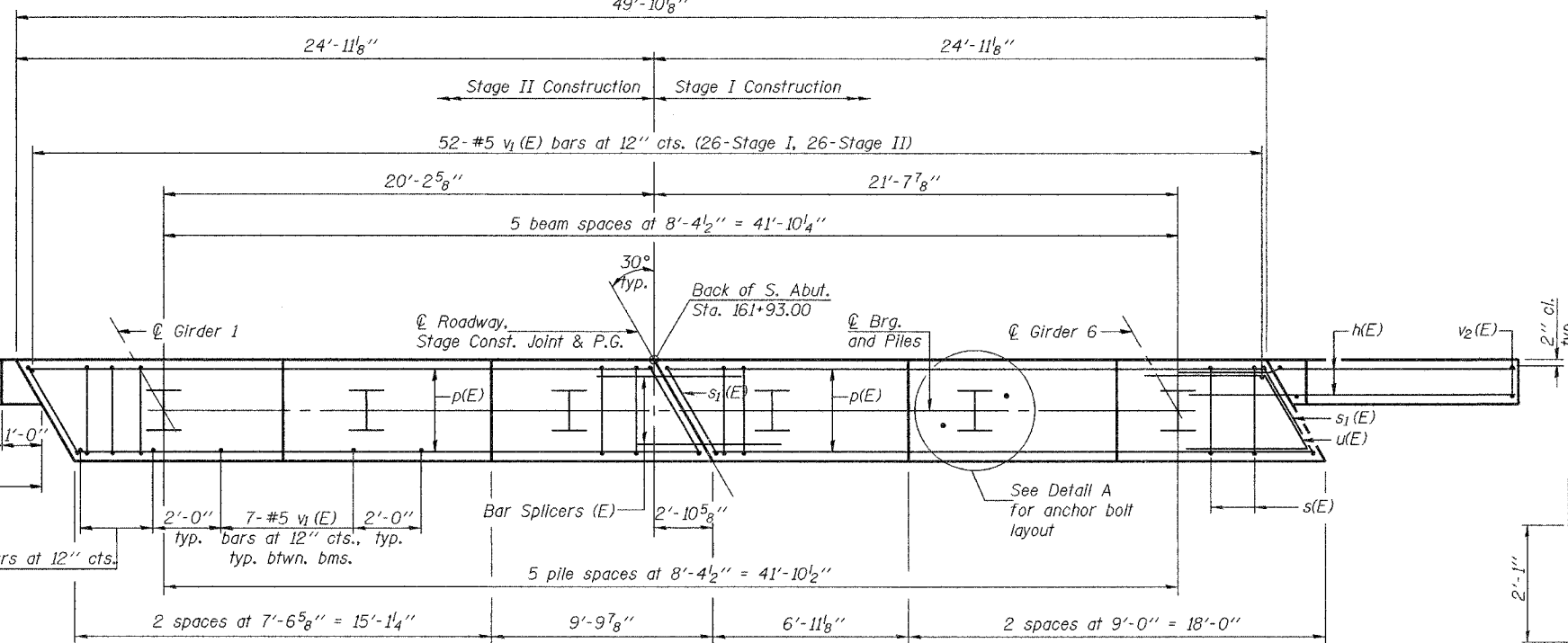
Contract No. 76454



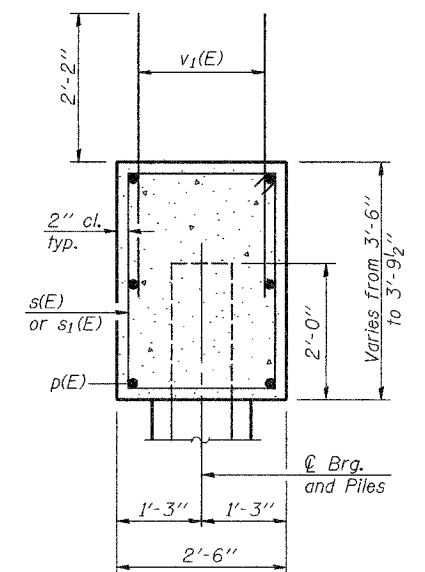
ELEVATION
(Looking South)

PILE DATA

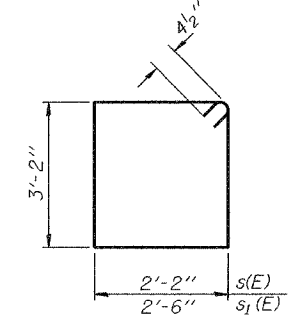
Type: Refusal HP12x63 with metal shoes
Nominal Required Bearing: 490 tons
Nominal Design Capacity: 327 tons
Est. Length: 107'
No. Required: 5 + 1 test pile



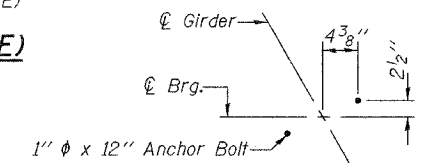
PLAN



SEC. THRU ABUT.



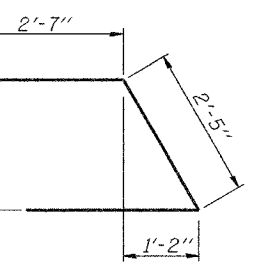
BARS s(E) & s1(E)



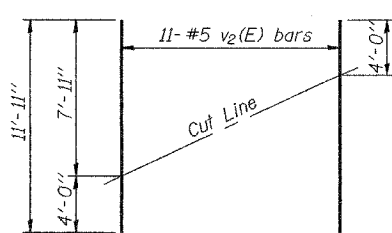
DETAIL A

BILL OF MATERIAL

Bar No.	Size	Length	Shape
h(E)	48 #5	13'-0"	
p(E)	12 #8	24'-7"	
s(E)	48 #4	11'-5"	
s1(E)	4 #4	12'-1"	
u(E)	8 #6	7'-7"	
v1(E)	95 #5	4'-4"	
v2(E)	22 #5	11'-11"	
Concrete Structures	Cu. Yd.	21.6	
Reinforcement Bars, Epoxy Coated	Pound	2630	
Structure Excavation	Cu. Yd.	312	
Bar Splicers (E)	Each	6	
Furnishing Steel Piles HP12x63	Foot	535	
Driving Steel Piles	Foot	535	
Test Pile Steel HP12x63	Each	1	
Metal Shoes	Each	5	

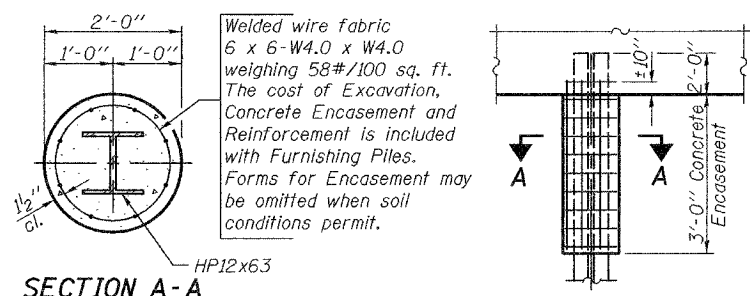


BAR u(E)



FIELD CUTTING DIAGRAM

Order v2(E) full length. Cut as shown and use remainder of bars in opposite face.



SECTION A-A

PILE ENCASEMENT DETAIL

DESIGNED	CEH
CHECKED	DHC
DRAWN	BECKY M. LEACH
CHECKED	CEH & DHC

November 10, 2005
EXAMINED *Thomas J. Damagala*
PASSED *Ralph E. Anderson*

AI-L

10-22-04

SOUTH ABUTMENT
F.A.P. ROUTE 314 - SECTION 11BR-1
MADISON COUNTY
STATION 161+40.00
STRUCTURE NO. 060-0339