

F.A. RTE.	SECTION	COUNTY	TOTAL SHEETS	SHEET NO.
604 & 789	103RS-1, 56RS-2	MADISON	8	1

STATE OF ILLINOIS  
DEPARTMENT OF TRANSPORTATION  
DIVISION OF HIGHWAYS

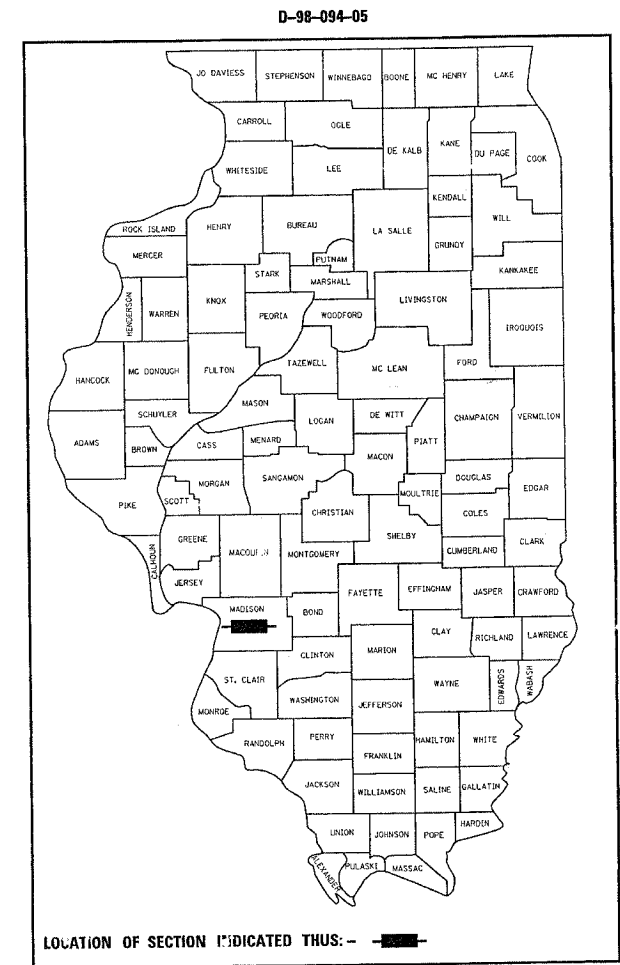
**PROPOSED  
HIGHWAY PLANS**

FAP ROUTE 604 & 789 (IL 159/IL 143)  
SECTION 103RS-1, 56RS-2  
PROJECT: HS-0005(472)  
MADISON COUNTY

C-98-121-05

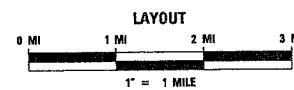
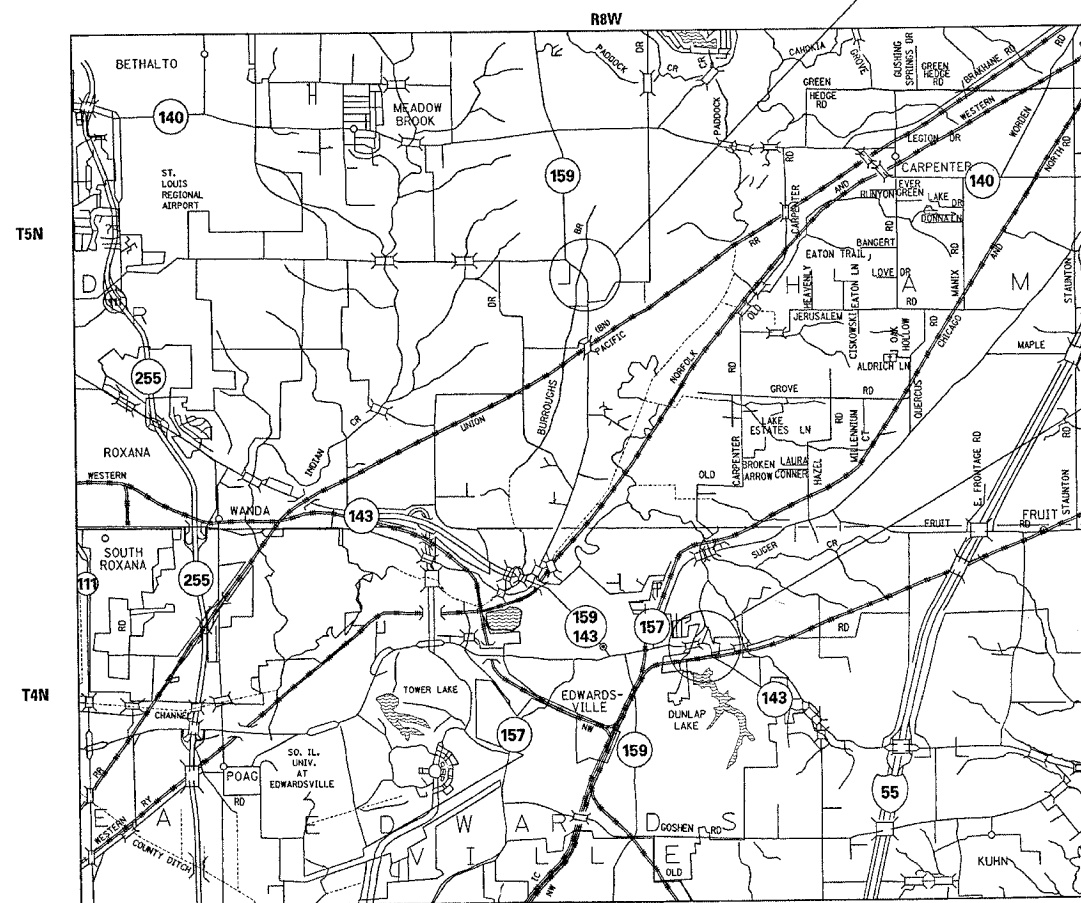
**INDEX OF SHEETS**

1. COVER SHEET
2. GENERAL NOTES & STANDARDS
3. SUMMARY OF QUANTITIES
- 4.-5. TYPICAL SECTIONS
6. LOCATION MAPS
7. LOCATION #1 PLAN VIEWS AND DETAILS
8. LOCATION #2 PLAN VIEWS AND DETAILS



**LOCATION #1**  
BEGIN MI. STA. 0.03, LAT. 38.87530, LONG. -89.96293  
END MI. STA. 0.31, LAT. 38.87147, LONG. -89.95962  
GROSS LENGTH: 0.28 MILES  
NET LENGTH: 0.28 MILES

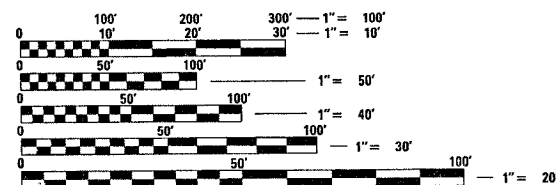
**LOCATION #2**  
BEGIN MI. STA. 0.00, LAT. 38.81346, LONG. -89.93862  
END MI. STA. 0.35, LAT. 38.81086, LONG. -89.93455  
GROSS LENGTH: 0.35 MILES  
NET LENGTH: 0.35 MILES



LOCATION #1	
ADT	
2003	30
S.U.	1%
M.U.	1%

LOCATION #2	
ADT	
2003	4800
S.U.	1.6%
M.U.	6.6%

MICROFILMED \_\_\_\_\_  
REEL NUMBER \_\_\_\_\_  
AWARDED \_\_\_\_\_  
RESIDENT ENGINEER \_\_\_\_\_  
AS BUILT CHANGES WERE MADE  
ON THE FOLLOWING SHEETS



FULL SIZE PLANS HAVE BEEN PREPARED USING STANDARD ENGINEERING SCALES. REDUCED SIZED PLANS WILL NOT CONFORM TO STANDARD SCALES. IN MAKING MEASUREMENTS ON REDUCED PLANS, THE ABOVE SCALES MAY BE USED.

J.U.L.I.E.  
JOINT UTILITY LOCATION INFORMATION FOR EXCAVATION  
1-800-892-0123

CONTRACT NO. 76953

STATE OF ILLINOIS  
DEPARTMENT OF TRANSPORTATION  
DIVISION OF HIGHWAYS

SUBMITTED Oct 26 2005  
Mike Cramie  
DEPUTY DIRECTOR OF HIGHWAYS  
REGION FIVE ENGINEER

December 9, 2005  
Mike Hine  
ENGINEER OF DESIGN AND ENVIRONMENT

December 9, 2005  
Eric Ham  
Deputy DIRECTOR, DIVISION OF HIGHWAYS

**PRINTED BY THE AUTHORITY  
OF THE STATE OF ILLINOIS**

PROJECT ENGINEER: WENDA SOUTHERLAND (618) 346-3159  
SQUAD LEADER: GREG HANCOCK (618) 346-3195