

F.A. RTE.	SECTION	COUNTY	TOTAL SHEETS	SHEET NO.
604 & 789	103RS-1, 56RS-2	MADISON	8	1

STATE OF ILLINOIS
DEPARTMENT OF TRANSPORTATION
DIVISION OF HIGHWAYS

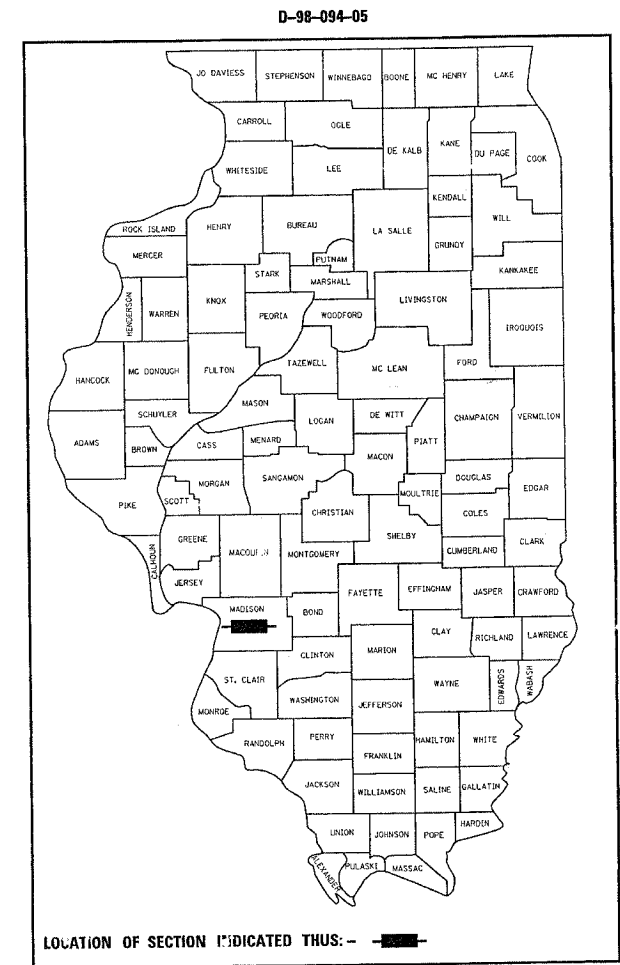
**PROPOSED
HIGHWAY PLANS**

FAP ROUTE 604 & 789 (IL 159/IL 143)
SECTION 103RS-1, 56RS-2
PROJECT: HS-0005(472)
MADISON COUNTY

C-98-121-05

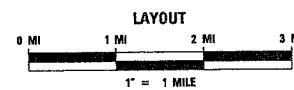
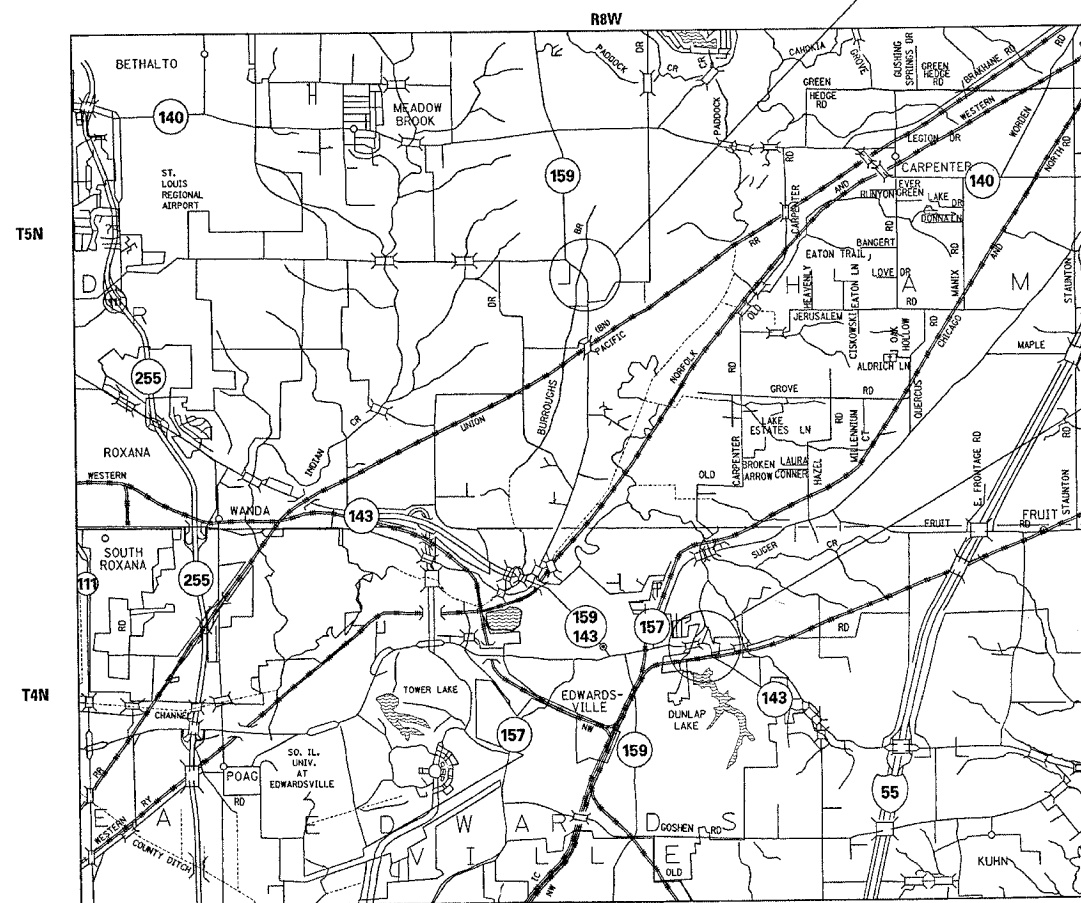
INDEX OF SHEETS

1. COVER SHEET
2. GENERAL NOTES & STANDARDS
3. SUMMARY OF QUANTITIES
- 4.-5. TYPICAL SECTIONS
6. LOCATION MAPS
7. LOCATION #1 PLAN VIEWS AND DETAILS
8. LOCATION #2 PLAN VIEWS AND DETAILS



LOCATION #1
BEGIN MI. STA. 0.03, LAT. 38.87530, LONG. -89.96293
END MI. STA. 0.31, LAT. 38.87147, LONG. -89.95962
GROSS LENGTH: 0.28 MILES
NET LENGTH: 0.28 MILES

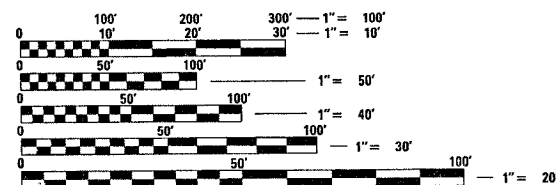
LOCATION #2
BEGIN MI. STA. 0.00, LAT. 38.81346, LONG. -89.93862
END MI. STA. 0.35, LAT. 38.81086, LONG. -89.93455
GROSS LENGTH: 0.35 MILES
NET LENGTH: 0.35 MILES



LOCATION #1	
ADT	
2003	30
S.U.	1%
M.U.	1%

LOCATION #2	
ADT	
2003	4800
S.U.	1.6%
M.U.	6.6%

MICROFILMED _____
REEL NUMBER _____
AWARDED _____
RESIDENT ENGINEER _____
AS BUILT CHANGES WERE MADE
ON THE FOLLOWING SHEETS



FULL SIZE PLANS HAVE BEEN PREPARED USING STANDARD ENGINEERING SCALES. REDUCED SIZED PLANS WILL NOT CONFORM TO STANDARD SCALES. IN MAKING MEASUREMENTS ON REDUCED PLANS, THE ABOVE SCALES MAY BE USED.

J.U.L.I.E.
JOINT UTILITY LOCATION INFORMATION FOR EXCAVATION
1-800-892-0123

CONTRACT NO. 76953

STATE OF ILLINOIS
DEPARTMENT OF TRANSPORTATION
DIVISION OF HIGHWAYS

SUBMITTED Oct 26 2005
Mike Cramie
DEPUTY DIRECTOR OF HIGHWAYS
REGION FIVE ENGINEER

December 9, 2005
Mike Hine
ENGINEER OF DESIGN AND ENVIRONMENT

December 9, 2005
Eric Ham
DEPUTY DIRECTOR, DIVISION OF HIGHWAYS

**PRINTED BY THE AUTHORITY
OF THE STATE OF ILLINOIS**

PROJECT ENGINEER: WENDA SOUTHERLAND (618) 346-3159
SQUAD LEADER: GREG HANCOCK (618) 346-3195

F.A. RTE. 604 & 789	SECTION 103RS-1, 56RS-2	COUNTY MADISON	TOTAL SHEETS 8	SHEET NO. 2
STA.		TO STA.		
FED. ROAD DIST. NO.		ILLINOIS FED. AID PROJECT		

GENERAL NOTES

1. IF ANY SECTION OR SUB-SECTION MONUMENTS ARE ENCOUNTERED, THE ENGINEER SHALL BE NOTIFIED BEFORE SUCH MONUMENTS ARE REMOVED OR RESURFACED OVER. THE CONTRACTOR SHALL PROTECT AND CAREFULLY PRESERVE ALL PROPERTY MARKERS AND MONUMENTS UNTIL THE OWNER, AN AUTHORIZED SURVEYOR, OR AGENT HAS WITNESSED OR OTHERWISE REFERENCED THEIR LOCATION.
2. EXCESS BITUMEN REMOVAL SHALL BE PAID FOR ACCORDING TO ARTICLE 109.04 OF THE STANDARD SPECIFICATIONS.
3. THE THICKNESS OF THE BITUMINOUS MIXTURE SHOWN ON THE PLANS IS THE NOMINAL THICKNESS. DEVIATIONS FROM THE NOMINAL THICKNESS WILL BE PERMITTED WHEN SUCH DEVIATIONS OCCUR DUE TO IRREGULARITIES IN THE EXISTING SURFACE OR BASE ON WHICH THE BITUMINOUS MIXTURE IS PLACED.
4. ILLINOIS STATE LAW REQUIRES A 48-HOUR NOTICE BE GIVEN TO ALL UTILITIES BEFORE DIGGING. FIELD MARKING OF FACILITIES MAY BE OBTAINED BY CONTACTING J.U.L.I.E. OR FOR NON-MEMBERS, THE UTILITY COMPANY DIRECTLY. AGENCIES KNOWN TO HAVE FACILITIES WITHIN THE PROJECT AREA ARE AS FOLLOWS:
 - *AMERIN IP
 - *CHARTER COMMUNICATIONS
 - *CONSOLIDATED COMMUNICATIONS
 - *CITY OF EDWARDSVILLE
 - *CLEOD USA TELECOMMUNICATIONS, INC.
 - *NORTHEAST CENTRAL WATER DISTRICT
 - *SBC
 - *SOUTHWESTERN ELECTRIC COOPERATIVE, INC.

MEMBERS OF J.U.L.I.E. (800)-892-0123 ARE INDICATED BY *. NON J.U.L.I.E. MEMBERS MUST BE NOTIFIED INDIVIDUALLY.
5. ALL TEMPORARY PAVEMENT MARKINGS WILL BE PLACED IN SUCH A MANNER SO AS NOT TO INTERFERE WITH THE PLACEMENT OF PERMANENT PAVEMENT MARKINGS.
6. THE CONTRACTOR SHALL BE AWARE THAT THERE ARE MANHOLES & VALVES LOCATED WITHIN THE RESURFACING LIMITS. CARE SHALL BE TAKEN IN THESE LOCATIONS DURING MILLING OPERATIONS.
7. THE CONTRACTOR SHALL VERIFY ALL DIMENSIONS AND CONDITIONS IN THE FIELD PRIOR TO CONSTRUCTION AND ORDERING OF MATERIALS.
8. NO OVERNIGHT LANE CLOSURES WILL BE ALLOWED.
9. "ROAD CONSTRUCTION AHEAD" SIGNS SHALL BE PLACED AT THE BEGINNING AND END OF THE PROJECT PLUS THE INTERSECTING SIDE ROADS, AND SHALL BE FLUORESCENT ORANGE AND THE COST INCLUDED IN THE TRAFFIC CONTROL PAY ITEMS.
10. FLAGMEN SHALL BE PRESENT DURING ALL CLOSURE HOURS, INCLUDING LUNCH HOUR, AND NO ADDITIONAL COMPENSATION SHALL BE APPLIED.

COMMITMENTS:
NONE

LIST OF STANDARDS

- 000001-04
- 001006
- 482001
- 482011-01
- 701001-01
- 701006-02
- 701011-01
- 701301-02
- 701311-02
- 701326-02
- 701501-03
- 702001-05
- 780001-01
- 781001-02

PLOT DATE = #DATE#
FILE NAME = #FILE#
PLOT SCALE = #SCALE#
REFERENCE = #REF#

REVISIONS		ILLINOIS DEPARTMENT OF TRANSPORTATION GENERAL NOTES AND STANDARDS FAP 604 & 789 SECTION 103RS-1, 56RS-2 MADISON COUNTY
NAME	DATE	
		SCALE: VERT. HORIZ. DATE
DRAWN BY		CHECKED BY

F.A.P. RTE. 604 & 189	SECTION 103RS-1, 5GRS-2	COUNTY MADISON	TOTAL SHEETS 8	SHEET NO. 3
STA.		TO STA.		
FED. ROAD DIST. NO.		ILLINOIS FED. AID PROJECT		

SUMMARY OF QUANTITIES

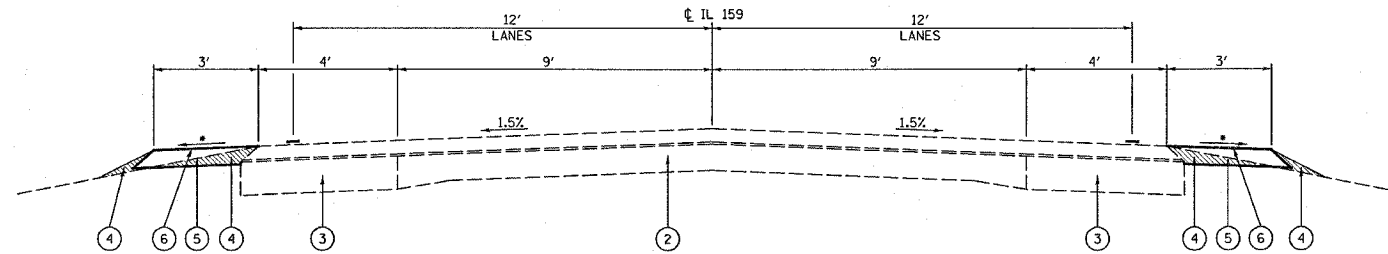
SUMMARY OF QUANTITIES			CONSTRUCTION TYPE CODE		
CODE NO	ITEM	UNIT	TOTAL QUANTITIES	LOC. #1	LOC. #2
				RURAL 1000-2A 90% FED. 10% STATE	URBAN 1000-2A 90% FED. 10% STATE
20200600	EXCAVATING AND GRADING EXISTING SHOULDER	UNIT	29	29	
25000200	SEEDING, CLASS 2	ACRE	0.2	0.2	
25000400	NITROGEN FERTILIZER NUTRIENT	POUND	18	18	
25000500	PHOSPHORUS FERTILIZER NUTRIENT	POUND	18	18	
25000600	POTASSIUM FERTILIZER NUTRIENT	POUND	18	18	
25100115	MULCH, METHOD 2	ACRE	0.2	0.2	
40600200	BITUMINOUS MATERIALS (PRIME COAT)	TON	1.9		1.9
40600300	AGGREGATE (PRIME COAT)	TON	8.9		8.9
40600980	BITUMINOUS SURFACE REMOVAL - BUTT JOINT	SQ YD	48		48
40600990	TEMPORARY RAMP	SQ YD	60		60
44000003	BITUMINOUS SURFACE REMOVAL 3/4"	SQ YD	5191		5191
48202600	BITUMINOUS SHOULDERS SUPERPAVE 8"	SQ YD	968	968	
60255500	MANHOLES TO BE ADJUSTED	EACH	2		2
64200105	SHOULDER RUMBLE STRIP	FOOT	2904	2904	
67100100	MOBILIZATION	L SUM	1	0.5	0.5
70100500	TRAFFIC CONTROL AND PROTECTION, STANDARD 701326	L SUM	1	1	
70102620	TRAFFIC CONTROL AND PROTECTION, STANDARD 701501	L SUM	1		1
70103815	TRAFFIC CONTROL SURVEILLANCE	CAL DA	10	10	
70300220	TEMPORARY PAVEMENT MARKING - LINE 4"	FOOT	14804		14804
70300260	TEMPORARY PAVEMENT MARKING - LINE 12"	FOOT	162		162
70301000	WORK ZONE PAVEMENT MARKING REMOVAL	SQ FT	2691		2691
* 78000200	THERMOPLASTIC PAVEMENT MARKING - LINE 4"	FOOT	7402		7402
* 78000600	THERMOPLASTIC PAVEMENT MARKING - LINE 12"	FOOT	81		81
* 78100100	RAISED REFLECTIVE PAVEMENT MARKER	EACH	34		34
78300200	RAISED REFLECTIVE PAVEMENT MARKER REMOVAL	EACH	34		34
X4066446	BITUMINOUS CONCRETE SURFACE COURSE, SUPERPAVE, MIX "F", N70	TON	478		478
X4066770	LEVELING BINDER (MACHINE METHOD), SUPERPAVE N70	TON	290		290
X7030200	SHORT-TERM PAVEMENT MARKING (SPECIAL)	FOOT	555		555

SUMMARY OF QUANTITIES			CONSTRUCTION TYPE CODE		
CODE NO	ITEM	UNIT	TOTAL QUANTITIES	LOC. #1	LOC. #2
				RURAL 1000-2A 90% FED. 10% STATE	RURAL 1000-2A 90% FED. 10% STATE

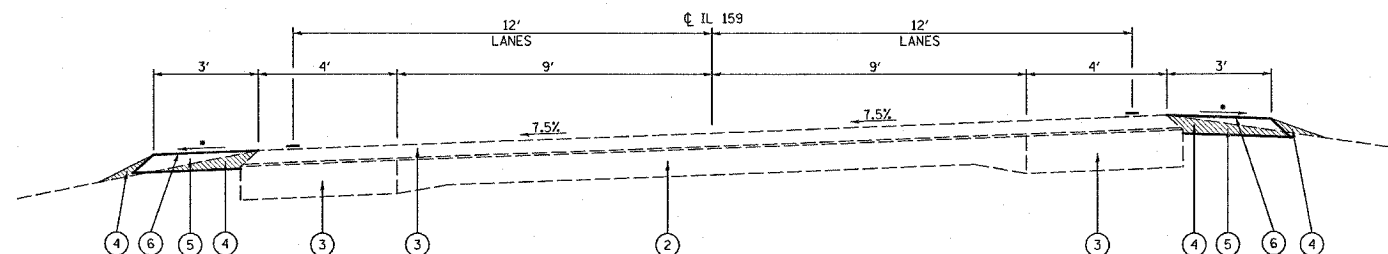
PLOT DATE = 10/25/2003
 FILE NAME = c:\projects\76953\plan\pln09405.dgn
 PLOT SCALE = 48,9999 / IN.
 REFERENCE = MRP

*SPECIALTY ITEMS

F.A. RTE.	SECTION	COUNTY	TOTAL SHEETS	SHEET NO.
604 & 789	103RS-1, 56RS-2	MADISON	8	4
STA.	TO STA.			
FED. ROAD DIST. NO.	ILLINOIS	FED. AID PROJECT		



**LOCATION #1 TANGENT SECTION
IL 159 FROM TRANQUILITY RIDGE
TO ST. JAMES RD.**
MI. STA. 0.03 TO MI. STA. 0.04
MI. STA. 0.26 TO MI. STA. 0.40
* SEE STANDARD 482001 FOR BITUMINOUS
SHOULDER SLOPES ADJACENT TO FLEXIBLE
PAVEMENT



**LOCATION #1 SUPERELEVATION SECTION
IL 159 FROM TRANQUILITY RIDGE
TO ST. JAMES RD.**
MI. STA. 0.04 TO MI. STA. 0.26
* SEE STANDARD 482001 FOR BITUMINOUS
SHOULDER SLOPES ADJACENT TO FLEXIBLE
PAVEMENT

- ① EXISTING BITUMINOUS OVERLAY - 3 3/4"
- ② EXISTING PAVEMENT - 9-6-9
- ③ EXISTING BITUMINOUS BASE COURSE WIDENING - 9"
- ④ PROPOSED GRADING AND EXCAVATING EXISTING SHOULDERS
- ⑤ PROPOSED BITUMINOUS SHOULDER - 8"
- ⑥ PROPOSED RUMBLE STRIP

MIXTURE USE	SHOULDERS	TOP LIFT SHOULDERS
AC/PG	PG 58-22	PG 58-22
RAP % (MAX)	30%	30%
DESIGN AIR VOIDS	2.0% @ Ndes=30	**2.0% @ Ndes=30
MIX COMPOSITION (GRADATION MIXTURE)		
FRICTION AGG	BAM	BAM

** Top Lift Shoulders - Design this mix at 2.0% voids and add asphalt to reduce voids to 1.5%.

PLT DATE * DATE *
 PLOT SCALE * SCALE *
 REFERENCE * REF *

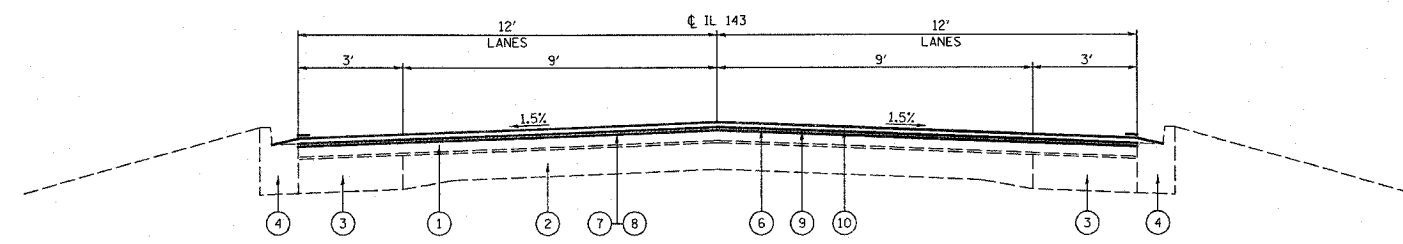
NAME	DATE

ILLINOIS DEPARTMENT OF TRANSPORTATION
TYPICAL SECTIONS
LOCATION #1
 FAP 604 & 789
 SECTION 103RS-1, 56RS-2
 MADISON COUNTY

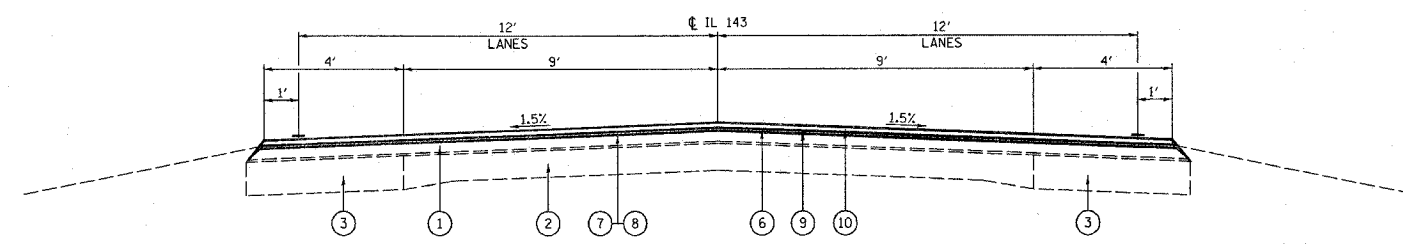
SCALE: VERT. _____
 HORIZ. _____

DATE _____ DRAWN BY _____
 CHECKED BY _____

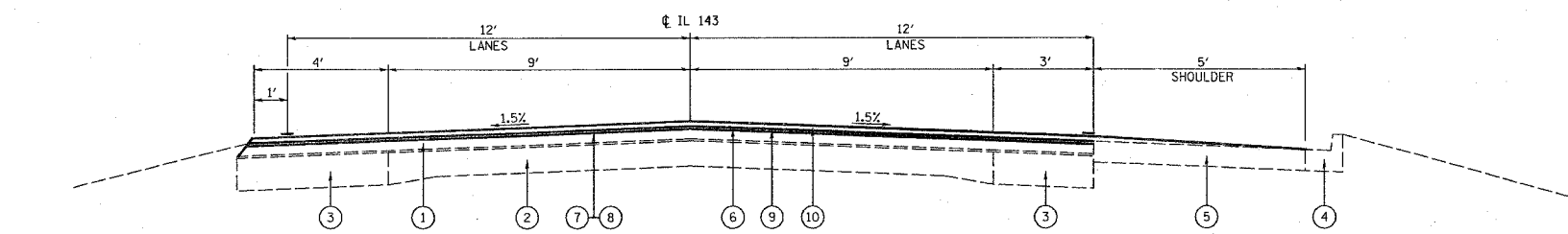
F.A. RTE.	SECTION	COUNTY	TOTAL SHEETS	SHEET NO.
604 & 789	103RS-1, 56RS-2	MADISON	8	5
STA.	TO STA.			
FED. ROAD DIST. NO.	ILLINOIS	FED. AID PROJECT		



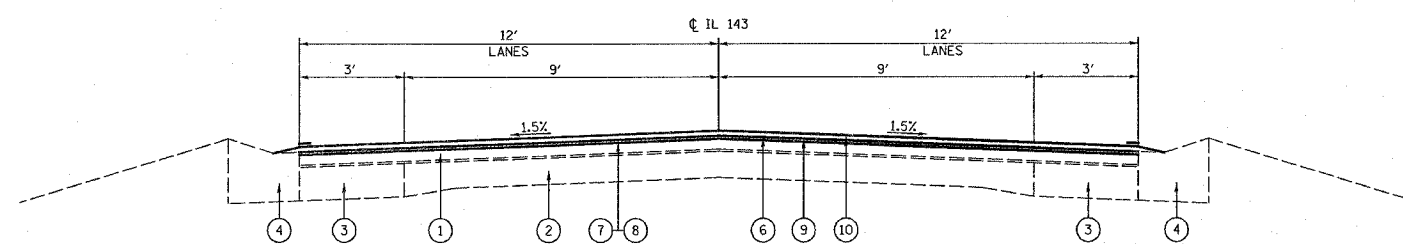
LOCATION #2
IL 143 FROM KIWONA ST.
TO SCHWARTZ RD.
MI. STA. 0.00 TO MI. STA. 0.01



LOCATION #2
IL 143 FROM KIWONA ST.
TO SCHWARTZ RD.
MI. STA. 0.01 TO MI. STA. 0.03
MI. STA. 0.19 TO MI. STA. 0.35



LOCATION #2
IL 143 FROM KIWONA ST.
TO SCHWARTZ RD.
MI. STA. 0.03 TO MI. STA. 0.09



LOCATION #2
IL 143 FROM KIWONA ST.
TO SCHWARTZ RD.
MI. STA. 0.09 TO MI. STA. 0.19

- 1 EXISTING BITUMINOUS OVERLAY - 3"
- 2 EXISTING P.C.C. PAVEMENT - 9"
- 3 EXISTING BITUMINOUS CONCRETE BASE COURSE WIDENING - 9"
- 4 EXISTING CONCRETE CURB AND GUTTER - TYPE B
- 5 EXISTING BITUMINOUS SHOULDER - 8"
- 6 PROPOSED BITUMINOUS SURFACE REMOVAL - 3/4"
- 7 PROPOSED BITUMINOUS MATERIALS (PRIME COAT)
- 8 PROPOSED AGGREGATE MATERIALS (PRIME COAT)
- 9 PROPOSED BITUMINOUS LEVELING BINDER MACHINE METHOD - 3/4"
- 10 PROPOSED BITUMINOUS SURFACE COURSE - 1 1/2"

MIXTURE USE	SURFACE	LEVEL BINDER
AC/PG	PG 64-22	PG 64-22
RAP % (MAX)	10%	15%
DESIGN AIR VOIDS	4.0% @ Ndes=70	4.0% @ Ndes=70
MIX COMPOSITION (GRADATION MIXTURE)		
FRICTION AGG	MIXTURE "F"	MIXTURE "C"

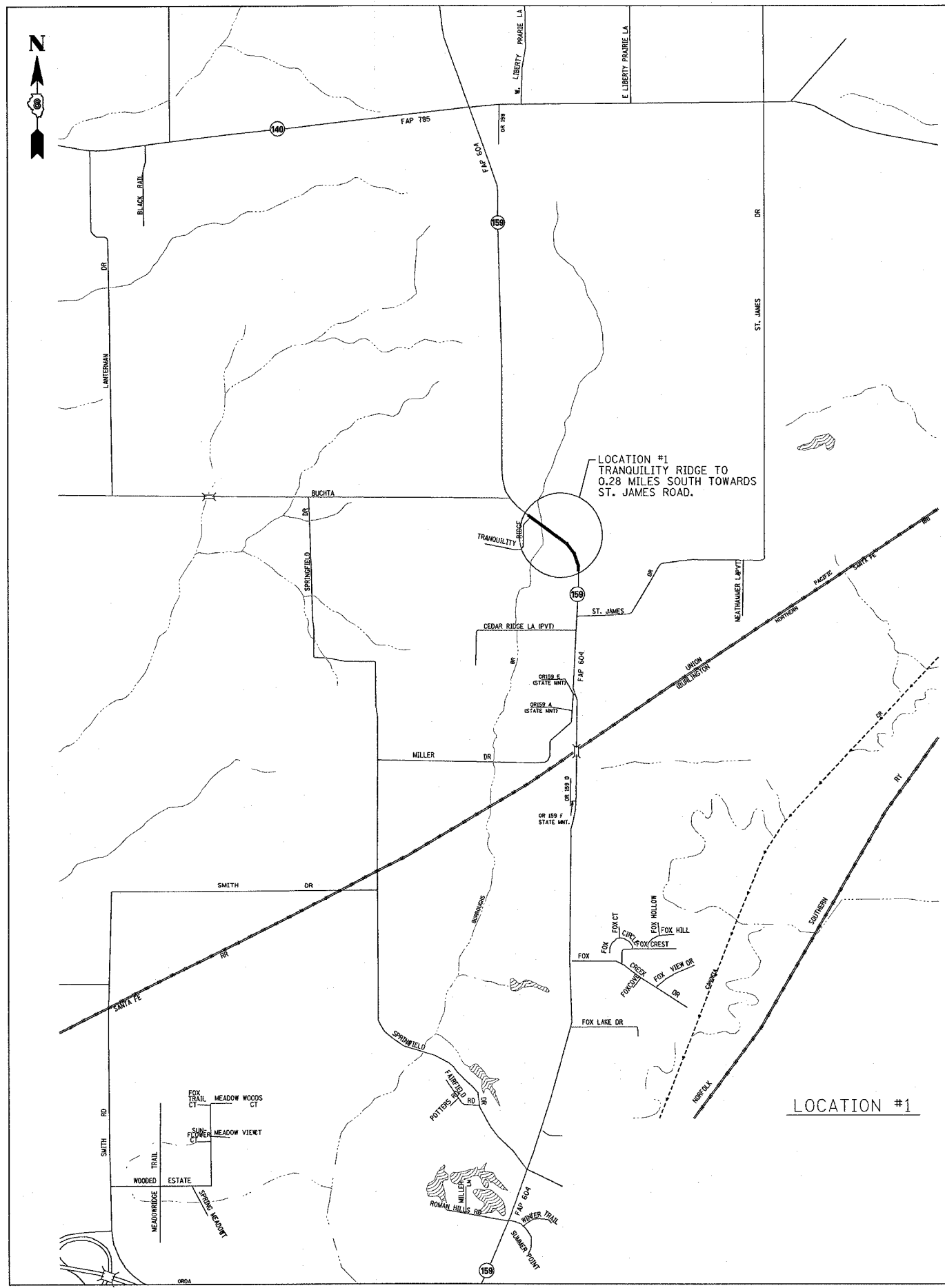
NAME	DATE

ILLINOIS DEPARTMENT OF TRANSPORTATION
TYPICAL SECTIONS
LOCATION #2
FAP 604 & 789
SECTION 103RS-1, 56RS-2
MADISON COUNTY

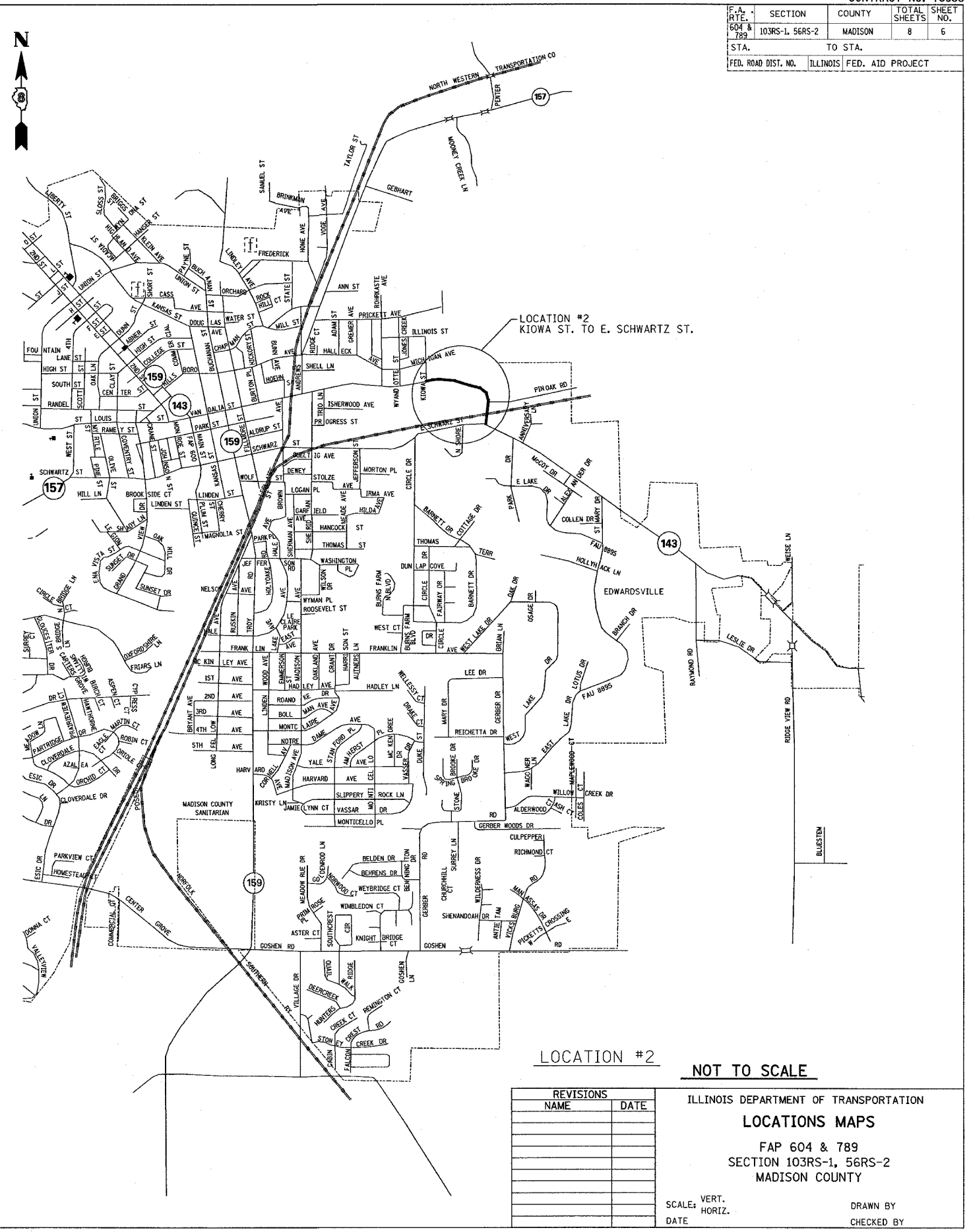
SCALE: VERT. _____
HORIZ. _____
DATE _____ DRAWN BY _____
CHECKED BY _____

PLOT DATE = 10/27/2005
 PLOT SCALE = 5/8" = 1'-0"
 REFERENCE = #REF#

F.A. RTE.	SECTION	COUNTY	TOTAL SHEETS	SHEET NO.
604 & 789	103RS-1, 56RS-2	MADISON	8	6
STA.	TO STA.			
FED. ROAD DIST. NO.	ILLINOIS FED. AID PROJECT			



LOCATION #1



LOCATION #2

NOT TO SCALE

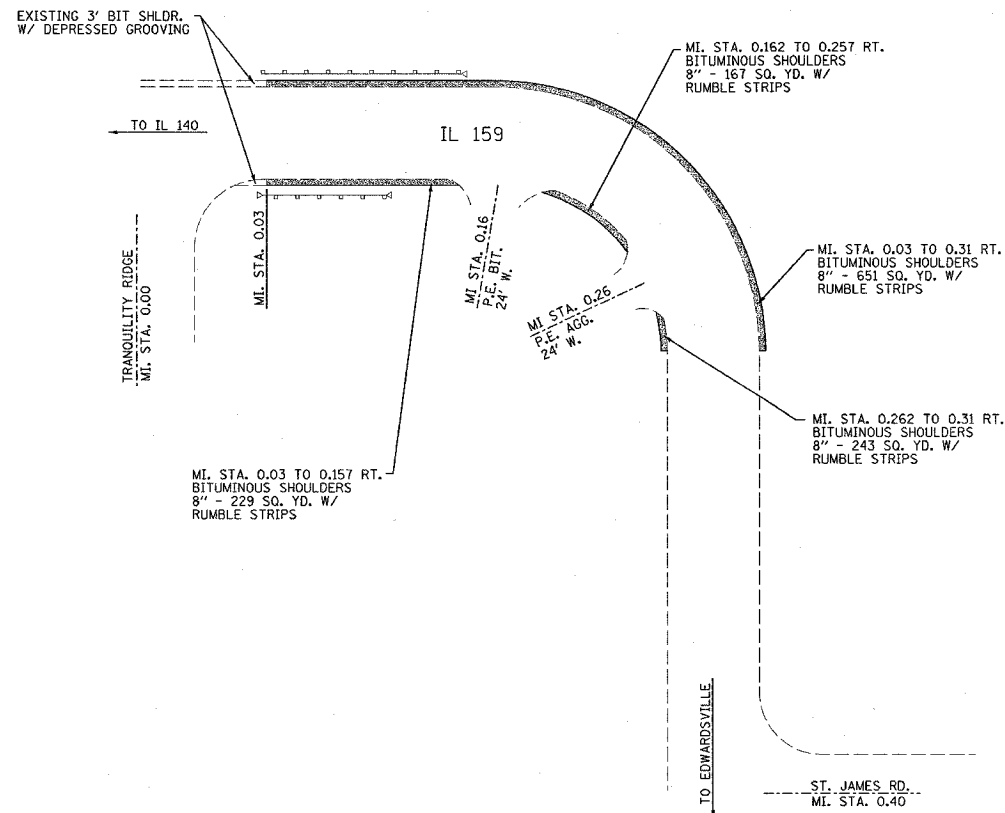
REVISIONS	
NAME	DATE

ILLINOIS DEPARTMENT OF TRANSPORTATION
LOCATIONS MAPS
 FAP 604 & 789
 SECTION 103RS-1, 56RS-2
 MADISON COUNTY

SCALE: VERT. _____
 HORIZ. _____
 DATE _____ DRAWN BY _____
 CHECKED BY _____

PLOT DATE = #DATE#
 FILE NAME = #FILE#
 PLOT SCALE = #SCALE#
 REFERENCE = #REF#

F.A. RTE. 504 & 789	SECTION 103RS-1, 56RS-2	COUNTY MADISON	TOTAL SHEETS 8	SHEET NO. 7
STA.		TO STA.		
FED. ROAD DIST. NO.	ILLINOIS	FED. AID PROJECT		



LOCATION #1 SHOULDER SCHEDULE

MI. STA. TO MI. STA.	OFFSET	SHLDR. WIDTH (FT.)	THICKNESS (IN.)	BIT. SHLDR. 8" (SQ. YD.)	EXCAVATING & GRADING EXIST. SHOULDER (UNIT)	RUMBLE STRIPS (FT.)
0.030 - 0.157	RT	3	8	224	6.7	671
0.162 - 0.257	RT	3	8	167	5.0	502
0.262 - 0.310	RT	3	8	84	2.5	253
0.030 - 0.310	LT	3	8	493	14.8	1478
TOTAL =				968	29.0	2904

NOTE: GAP SHOULDERS AT ALL MAIL BOX TURNOUTS, SIDEROADS AND ENTRANCES

LOCATION #1 PLAN VIEW
IL 159 FROM TRANQUILITY RIDGE
TO ST. JAME RD.

LOCATION #1 EROSION CONTROL SCHEDULE

MI. STA. TO MI. STA.	OFFSET	LENGTH (FT)	WIDTH (FT)	SEEDING CL 2 (AC)	NITRO FERT NUTR (LBS)	PHOS FERT NUTR (LBS)	POTAS. FERT NUTR (LBS)	MULCH METHOD 2 (AC)
0.030 - 0.157	RT	670.56	3	0.05	4.5	4.5	4.5	0.05
0.162 - 0.257	RT	501.6	3	0.03	2.7	2.7	2.7	0.03
0.262 - 0.310	RT	253.44	3	0.02	1.8	1.8	1.8	0.02
0.030 - 0.310	LT	1478.4	3	0.10	9.0	9.0	9.0	0.10
TOTAL =				0.20	18.0	18.0	18.0	0.20

PLOT DATE = #DATE
PLOT SCALE = #SCALE
REFERENCE = #REF

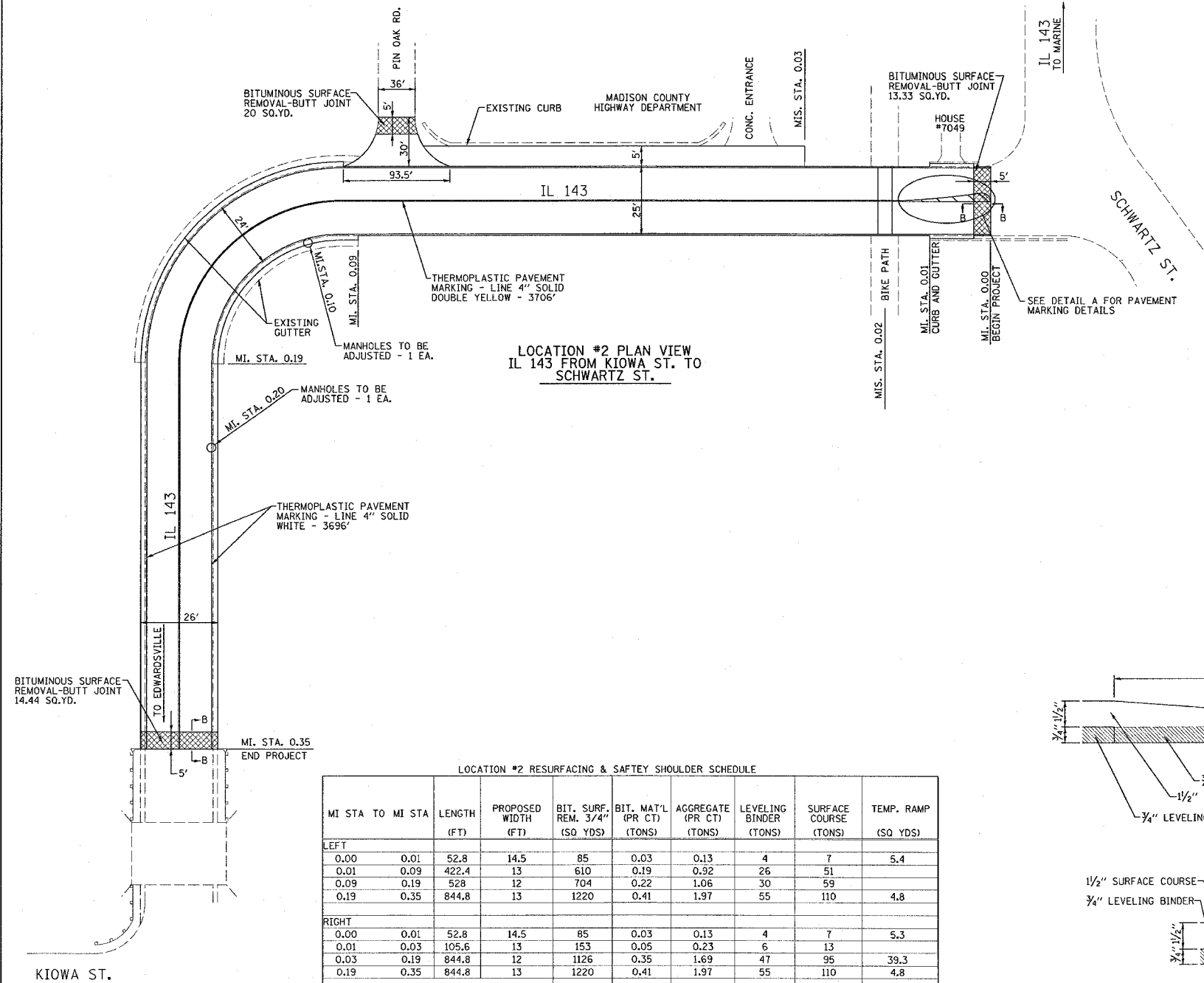
REVISIONS	
NAME	DATE

ILLINOIS DEPARTMENT OF TRANSPORTATION
**LOCATION #1 PLANS
AND DETAILS**
FAP 604 & 789
SECTION 103RS-1, 56RS-2
MADISON COUNTY

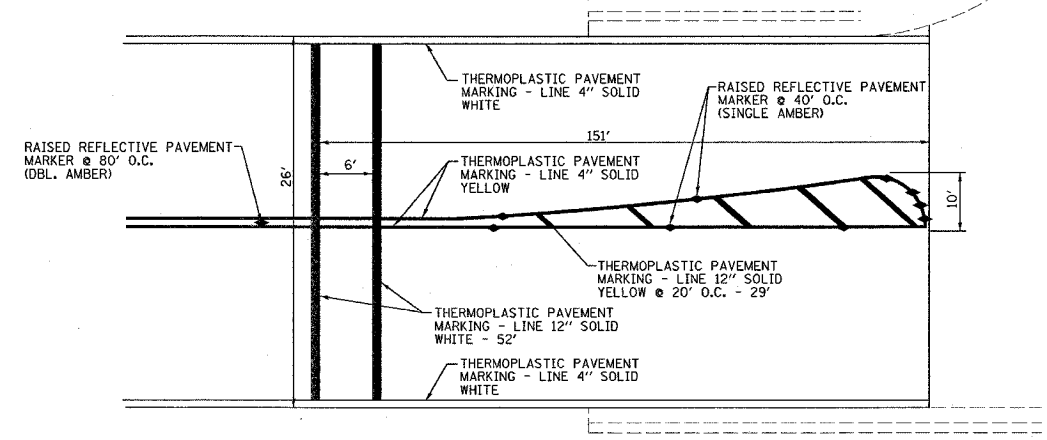
SCALE: VERT.
HORIZ.
DATE

DRAWN BY
CHECKED BY

F.A. RTE. 604 & 789	SECTION 103RS-1, 56RS-2	COUNTY MADISON	TOTAL SHEETS 8	SHEET NO. 8
STA. TO STA.		TO STA.		
FED. ROAD DIST. NO.		ILLINOIS FED. AID PROJECT		



LOCATION #2 PLAN VIEW
IL 143 FROM KIOWA ST. TO
SCHWARTZ ST.



DETAIL A

LOCATION #2 RESURFACING & SAFETY SHOULDER SCHEDULE

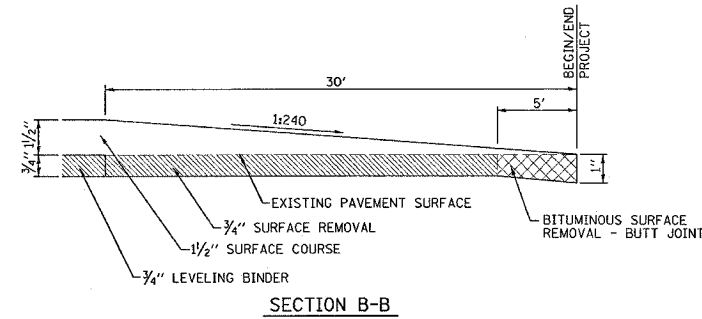
MI STA TO MI STA	LENGTH (FT)	PROPOSED WIDTH (FT)	BIT. SURF. REM. 3/4" (SQ YDS)	BIT. MAT'L (PR CT) (TONS)	AGGREGATE (PR CT) (TONS)	LEVELING BINDER (TONS)	SURFACE COURSE (TONS)	TEMP. RAMP (SQ YDS)
LEFT								
0.00 - 0.01	52.8	14.5	85	0.03	0.13	4	7	5.4
0.01 - 0.09	422.4	13	610	0.19	0.92	26	51	
0.09 - 0.19	528	12	704	0.22	1.06	30	59	
0.19 - 0.35	844.8	13	1220	0.41	1.97	55	110	4.8
RIGHT								
0.00 - 0.01	52.8	14.5	85	0.03	0.13	4	7	5.3
0.01 - 0.03	105.6	13	153	0.05	0.23	6	13	
0.03 - 0.19	844.8	12	1126	0.35	1.69	47	95	39.3
0.19 - 0.35	844.8	13	1220	0.41	1.97	55	110	4.8
TOTAL =			5191	1.7	8.1	227	452	59.6

LOCATION #2 SHOULDER RESURFACING SCHEDULE

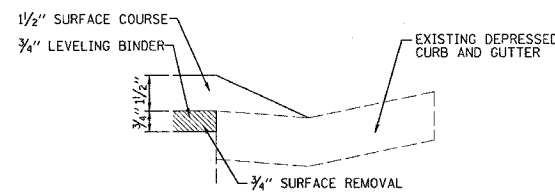
MI STA TO MI STA	LENGTH (FT)	BIT. MAT'L (PR CT) (TONS)	AGGREGATE (PR CT) (TONS)	SURFACE COURSE (TONS)
RIGHT				
0.03 - 0.08	264	0.05	0.22	8
		0.1	0.2	8

LOCATION #2 SIDE ROAD RESURFACING SCHEDULE

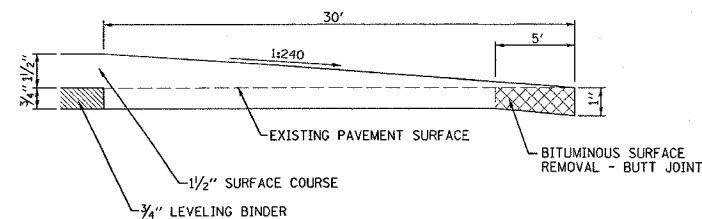
	AREA (SQ YDS)	BIT. MAT'L (PR CT) (TONS)	AGGREGATE (PR CT) (TONS)	SURFACE COURSE (TONS)
PINE OAK ROAD	216	0.07	0.32	18
		0.1	0.3	18



SECTION B-B



RESIDENTIAL ENTRANCE
#7049



SIDE ROAD DETAIL

REVISIONS	
NAME	DATE

ILLINOIS DEPARTMENT OF TRANSPORTATION
LOCATION #2 PLANS AND DETAILS
FAP 604 & 789
SECTION 103RS-1, 56RS-2
MADISON COUNTY

SCALE: VERT. _____
HORIZ. _____
DATE _____ DRAWN BY _____
CHECKED BY _____

PLOT DATE = #DAYS
FILE NAME = #FILE#
PLOT SCALE = #SCALE#
REFERENCE = #REF#