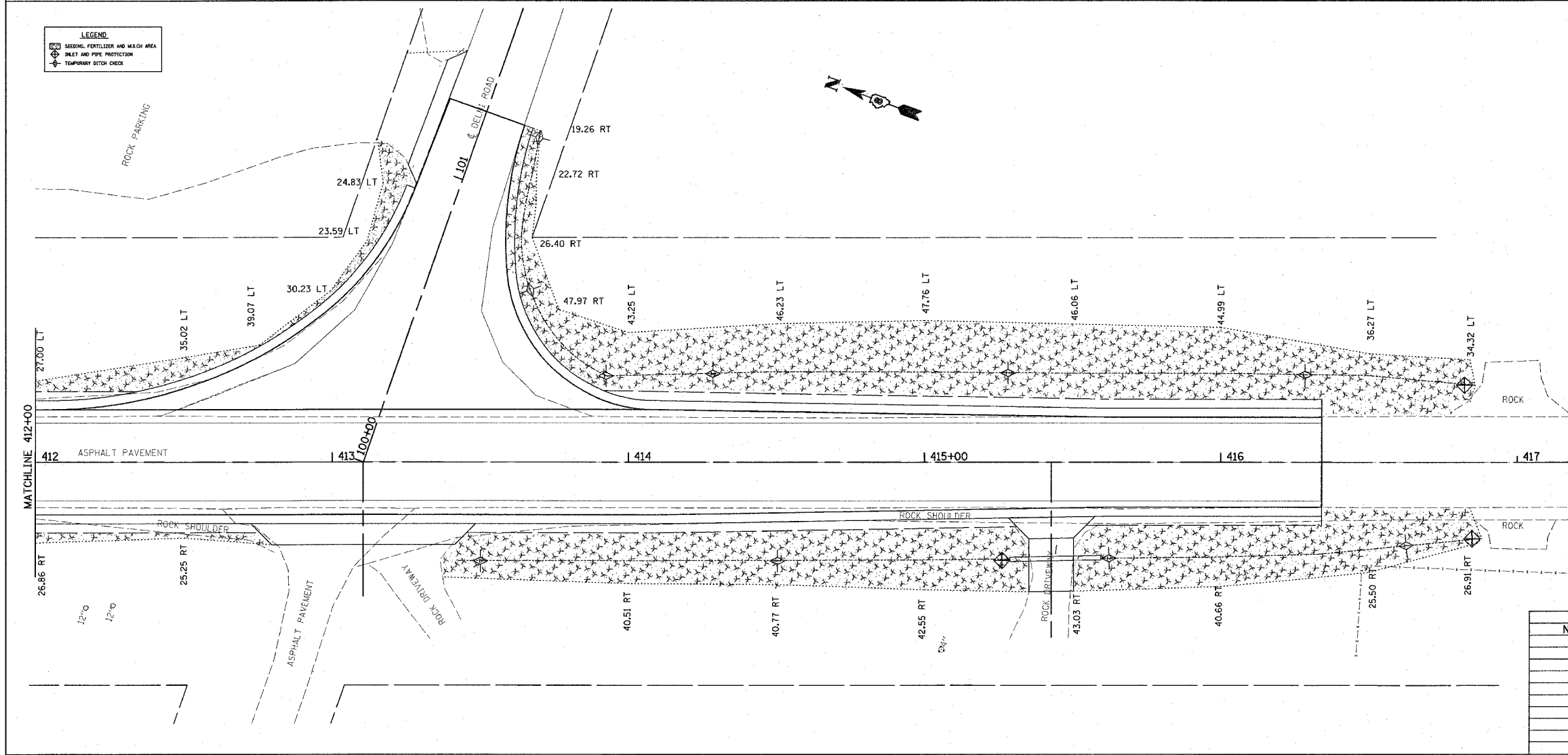
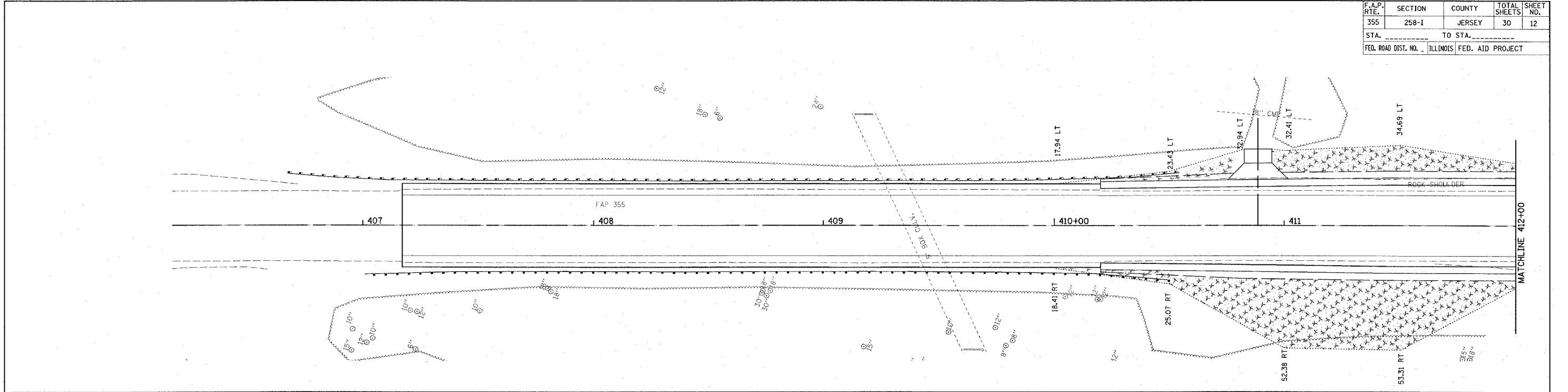


F.A.P. RTE.	SECTION	COUNTY	TOTAL SHEETS	SHEET NO.
355	258-I	JERSEY	30	12
STA.		TO STA.		
FED. ROAD DIST. NO.		ILLINOIS FED. AID PROJECT		



**LEGEND**

	SEEDING, FERTILIZER AND M.E. OF AREA
	INLET AND PIPE PROTECTION
	TEMPORARY DITCH CHECK



REVISIONS	
NAME	DATE

ILLINOIS DEPARTMENT OF TRANSPORTATION  
**EROSION & SEDIMENT CONTROL PLAN**  
 FAP ROUTE 355  
 SECTION 258-I  
 JERSEY COUNTY

SCALE: VERT. \_\_\_\_\_  
 HORIZ. \_\_\_\_\_  
 DATE \_\_\_\_\_

DRAWN BY \_\_\_\_\_  
 CHECKED BY \_\_\_\_\_

PLOT DATE = 10/27/2005  
 FILE NAME = c:\projects\258-I\258-I-plan\p12.dgn  
 USER NAME = c:\users\jg