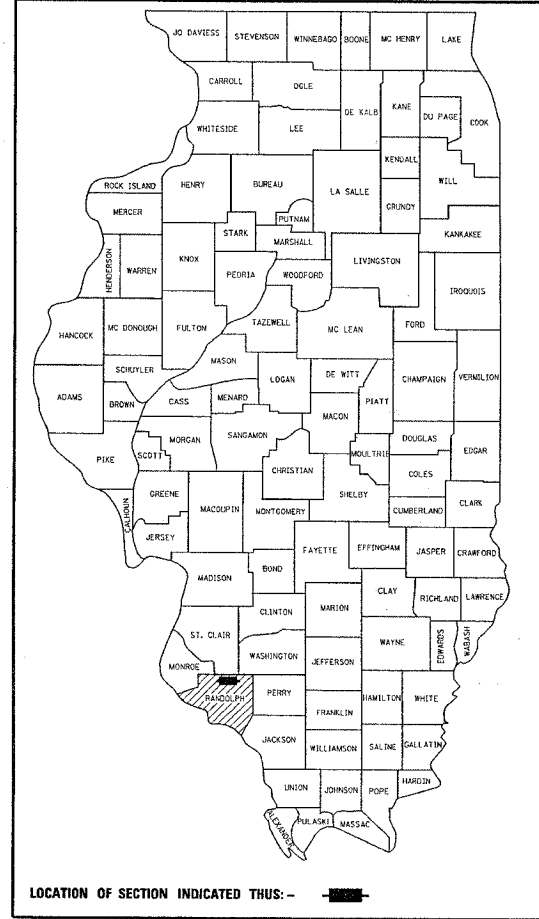


ROUTE	SECTION	COUNTY	TOTAL SHEETS	SHEET NO.
PARK ROADS	DIST. 8 WSC 2006-1	RANDOLPH	43	1
			+2	
			=	45

D-98-115-05



INDEX OF SHEETS

- 1 COVER SHEET
- 2-2A SCHEDULE OF QUANTITIES
- 2B GENERAL NOTES AND SUMMARY OF QUANTITIES
- 3 SITE LAYOUT
- 4 SHEET GRID
- 5-39 PLAN SHEETS
- 40 WORLD SHOOTING AND RECREATION COMPLEX MAIN ENTRANCE PLAN
- 41 EVENTS CENTER BUILDING ENTRANCE PLAN
- 42 SHOWER BUILDING AREA PLAN
- 43 EGYPTIAN ELECTRIC SUBSTATION AREA PLAN

STATE OF ILLINOIS
DEPARTMENT OF TRANSPORTATION
DIVISION OF HIGHWAYS
PROPOSED
LANDSCAPE PLANS
PARK ROADS
SECTION DIST. 8 WSC 2006-1
WORLD SHOOTING AND RECREATION COMPLEX
PHASE IV
RANDOLPH COUNTY
C-98-143-05

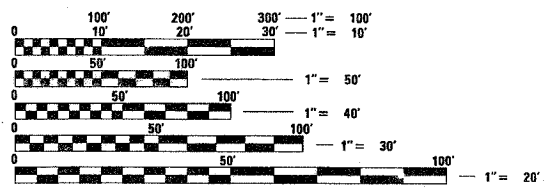
Plans Prepared By:

KNIGHT

Engineers & Architects

221 North LaSalle Street
 SUITE 300
 Chicago IL 60601
 Phone: (312)-577-3300, Fax (312)-577-3526

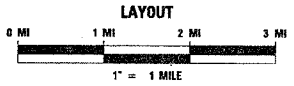
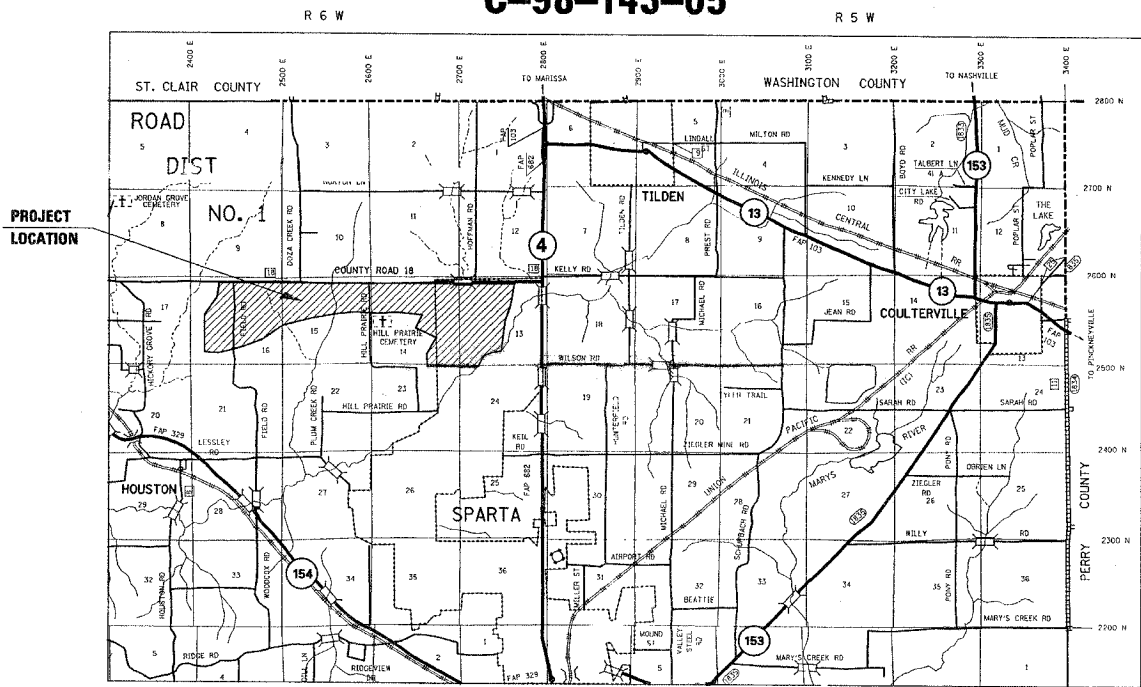
MICROFILMED _____
 REEL NUMBER _____
 AWARDED _____
 RESIDENT ENGINEER _____
 AS BUILT CHANGES WERE MADE
 ON THE FOLLOWING SHEETS



FULL SIZE PLANS HAVE BEEN PREPARED USING STANDARD ENGINEERING SCALES. REDUCED SIZED PLANS WILL NOT CONFORM TO STANDARD SCALES. IN MAKING MEASUREMENTS ON REDUCED PLANS, THE ABOVE SCALES MAY BE USED.

J.U.L.I.E.
 JOINT UTILITY LOCATION INFORMATION FOR EXCAVATION
 1-800-892-0123

CONTRACT NO. 76972



IL STATE PLANE WEST NAD 83
 X: 38.18706 Y: -89.75517

DANIEL G. KAVANAGH
 LICENSED PROFESSIONAL ENGINEER OF ILLINOIS
 062-04572
 exp. 11/30/05

STATE OF ILLINOIS
 DEPARTMENT OF TRANSPORTATION
 DIVISION OF HIGHWAYS

SUBMITTED Aug 31, 20 05
Mary Lamic
 DEPUTY DIRECTOR OF HIGHWAYS
 REGION FIVE ENGINEER

October 14, 20 05
Mike Hine
 ENGINEER OF DESIGN AND ENVIRONMENT

October 14, 20 05
Eric E. Haran
 DEPUTY DIRECTOR, DIVISION OF HIGHWAYS

**PRINTED BY THE AUTHORITY
 OF THE STATE OF ILLINOIS**

IDNR PLAN CONTACT: GARY ILES (618) 435-8138
 IDNR LANDSCAPE ARCHITECT: NED ENRIETTO (618) 435-8138