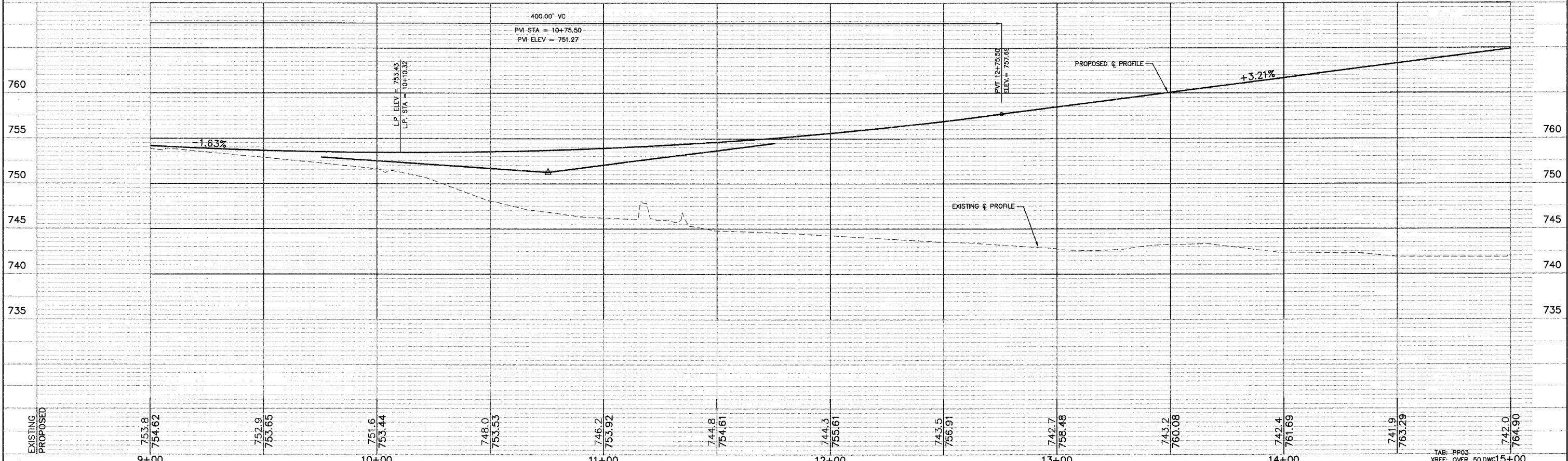


LEGEND

- PATH TO BE REMOVED AND REPLACED
- TEMPORARY AGGREGATE
- PATH TO BE PERMANENTLY REMOVED



PREPARED FOR:
WHEATON PARK DISTRICT
 666 S. MAIN STREET
 WHEATON, ILLINOIS 60187

PREPARED BY:

CEMCON, Ltd.
 Consulting Engineers, Land Surveyors & Planners
 2280 White Oak Circle, Suite 100
 Aurora, Illinois 60504-9675
 PH: 630.862.2100 Fax: 630.862.2199
 E-Mail: cadd@cemcon.com Website: www.cemcon.com

REVISIONS		REVISIONS	
NO.	DATE	NO.	DATE

BICYCLE BRIDGE STA. 9+00.00 TO 14+50.00

PEDESTRIAN/BICYCLE BRIDGE OVER UNION PACIFIC RAILROAD

FILE NAME: PP_OVR	DSGN. BY: CA	JOB NO.: 551.007	FLD. BK./PG.: -----	SHEET NO.
DISC. NUMBER: 551007	DRN. BY: RDS	DATE: 12-21-04	SCALE: 1" = 20'H:5'V	10 of 54

Copyright © 2003 CEMCON, Ltd. All rights reserved.