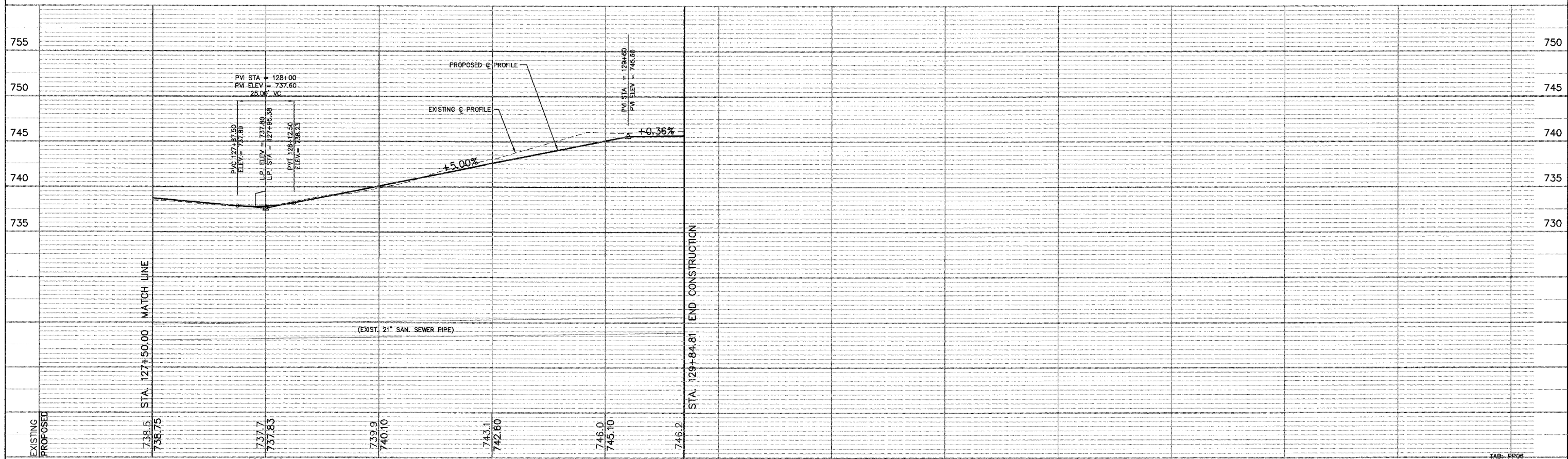
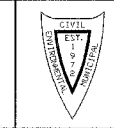


PEDESTRIAN PATH



PREPARED FOR:
WHEATON PARK DISTRICT
 666 S. MAIN STREET
 WHEATON, ILLINOIS 60187



PREPARED BY:
CEMCON, Ltd.
 Consulting Engineers, Land Surveyors & Planners
 2280 White Oak Circle, Suite 100
 Aurora, Illinois 60504-9675
 Ph: 630.862.2100 Fax: 630.862.2199
 E-Mail: cadd@cemcon.com Website: www.cemcon.com

NO.		DATE	DESCRIPTION	REVISIONS		NO.	DATE	DESCRIPTION

PEDESTRIAN PATH STA. 127+50.00 TO STA.129+84.81
PEDESTRIAN/BICYCLE BRIDGE OVER UNION PACIFIC RAILROAD

FILE NAME: PP_OVR	DSGN. BY: CA	JOB NO.: 551.007	FLD. BK./PG.: -----	SHEET NO. 13 of 54
DISC. NUMBER: 551007	DRN. BY: KMS	DATE: 04-26-04	SCALE: 1" = 20'H:5'V	

Copyright © 2003 CEMCON, Ltd. All rights reserved.