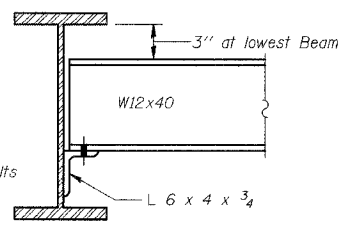
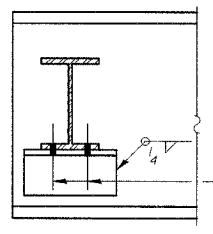
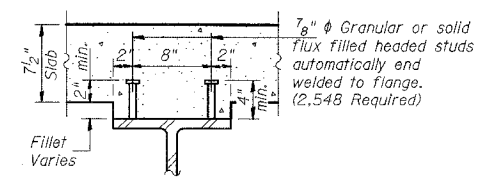


- Notes:
- For Steel Beam Details See Sheet No. S14
 - All diaphragms, splice plates, connection plates and angles shall comply with N.T.R.



Note: Two hardened washers shall be required over all oversize holes for diaphragms.

PREPARED FOR:
WHEATON PARK DISTRICT
666 S. MAIN STREET
WHEATON, ILLINOIS 60187



PREPARED BY:
CEMCON, Ltd.
Consulting Engineers, Land Surveyors & Planners
2280 White Oak Circle, Suite 100
Aurora, Illinois 60504-9675
Ph: 630.862.2100 Fax: 630.862.2199
E-Mail: cadd@cemcon.com Website: www.cemcon.com

REVISIONS					
NO.	DATE	DESCRIPTION	NO.	DATE	DESCRIPTION

INDEX OF BRIDGE SHEETS SHEET S12 OF S29 Copyright © 2003 Camcon, Ltd. All rights reserved.				
STEEL FRAMING LAYOUT PLAN - SHEET 1 OF 2				
PEDESTRIAN/BICYCLE PATH BRIDGE OVER UNION PACIFIC RAILROAD				
FILE NAME: FRAMING	DSGN. BY: MMH	JOB NO.: 551007	FLD. BK./PG.: -----	SHEET NO. 25 of 54
DISC. NUMBER: 551007	DRN. BY: ROS	DATE: 04-26-04	SCALE: -----	