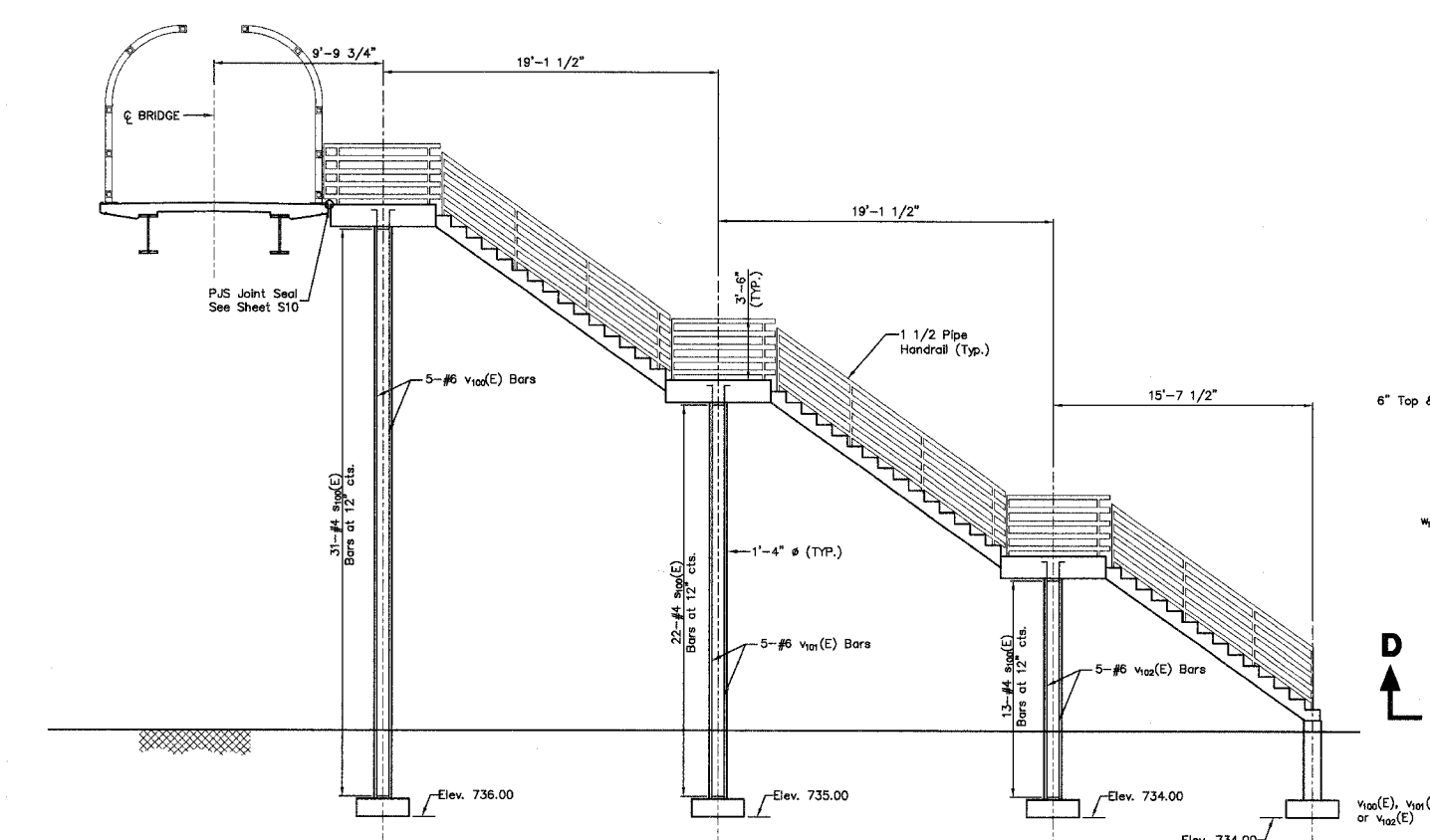
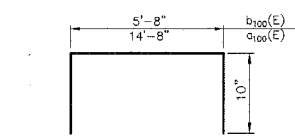
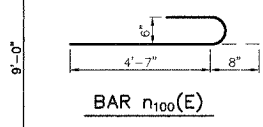
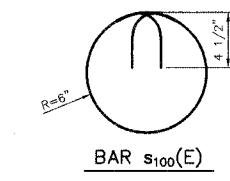


PLAN

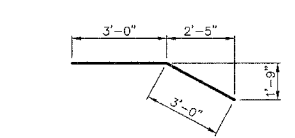


ELEVATION

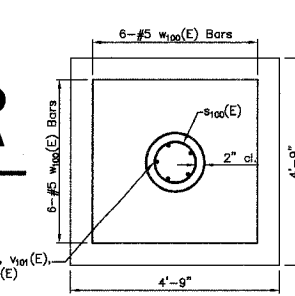
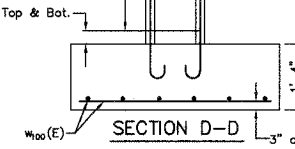
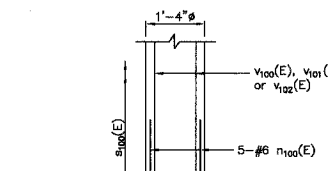
BAR v100(E), BAR v101(E), BAR v102(E), & BAR v103(E)



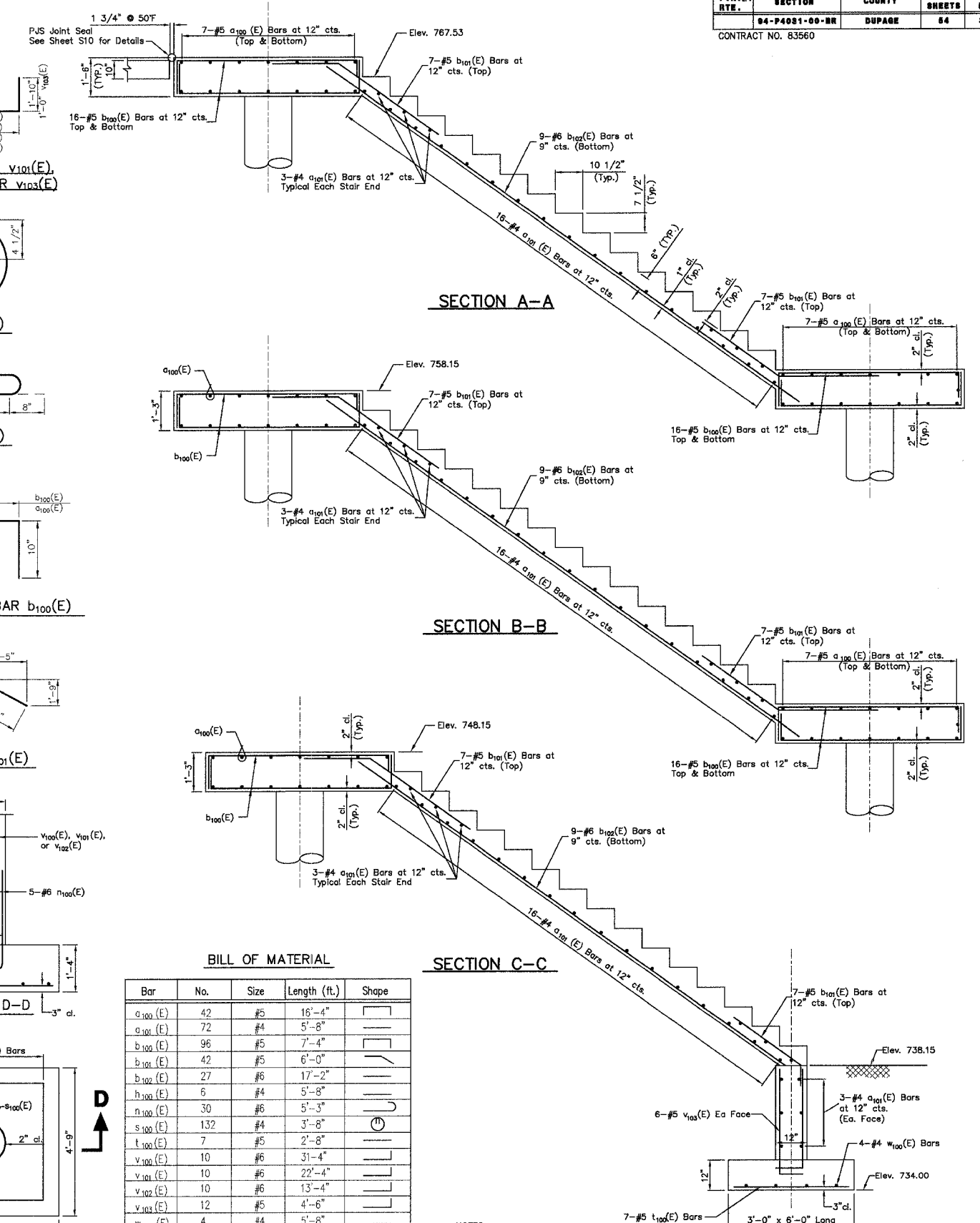
BAR a100(E) & BAR b100(E)



BAR b101(E)



COLUMN FOOTING PLAN



SECTION A-A

SECTION B-B

SECTION C-C

BILL OF MATERIAL

Bar	No.	Size	Length (ft.)	Shape
a100(E)	42	#5	16'-4"	□
a101(E)	72	#4	5'-8"	□
b100(E)	96	#5	7'-4"	□
b101(E)	42	#5	6'-0"	□
b102(E)	27	#6	17'-2"	□
b103(E)	6	#4	5'-8"	□
n100(E)	30	#6	5'-3"	□
s100(E)	132	#4	3'-8"	□
t100(E)	7	#5	2'-8"	□
v100(E)	10	#6	31'-4"	□
v101(E)	10	#6	22'-4"	□
v102(E)	10	#6	13'-4"	□
v103(E)	12	#5	4'-6"	□
w100(E)	4	#4	5'-8"	□

Structure	Excavation	Cu. Yd	79.0
Concrete Structures	Cu. Yd	35.0	
Reinforcement Bars, Epoxy Coated	Pound	4,360	
Pipe Handrail	Foot	168	

NOTES:

- Pipe handrail shall be furnished, erected and painted as specified in Section 510 "Pipe Handrail" of the Standard Specifications.
- Maximum design soil pressure under footings = 2000 psf. Suitability of soil under foundations to be verified by soil engineer on site.

PREPARED FOR:
WHEATON PARK DISTRICT
666 S. MAIN STREET
WHEATON, ILLINOIS 60187

PREPARED BY:
CEMCON, Ltd.
Consulting Engineers, Land Surveyors & Planners
2280 White Oak Circle, Suite 100
Aurora, Illinois 60504-9675
Ph: 630.862.2100 Fax: 630.862.2199
E-Mail: cadd@cemcon.com Website: www.cemcon.com

NO.		DATE		DESCRIPTION	

STAIR DETAILS

PEDESTRIAN/BICYCLE BRIDGE OVER UNION PACIFIC RAILROAD

FILE NAME: STAIR_DET	DSGN. BY: MMH	JOB NO.: 551.007	FLD. BK./PG.: -----	SHEET NO. 32 of 54
DISC. NUMBER: 551007	DRN. BY: RDS	DATE: 12-21-04	SCALE: 1" = -----	