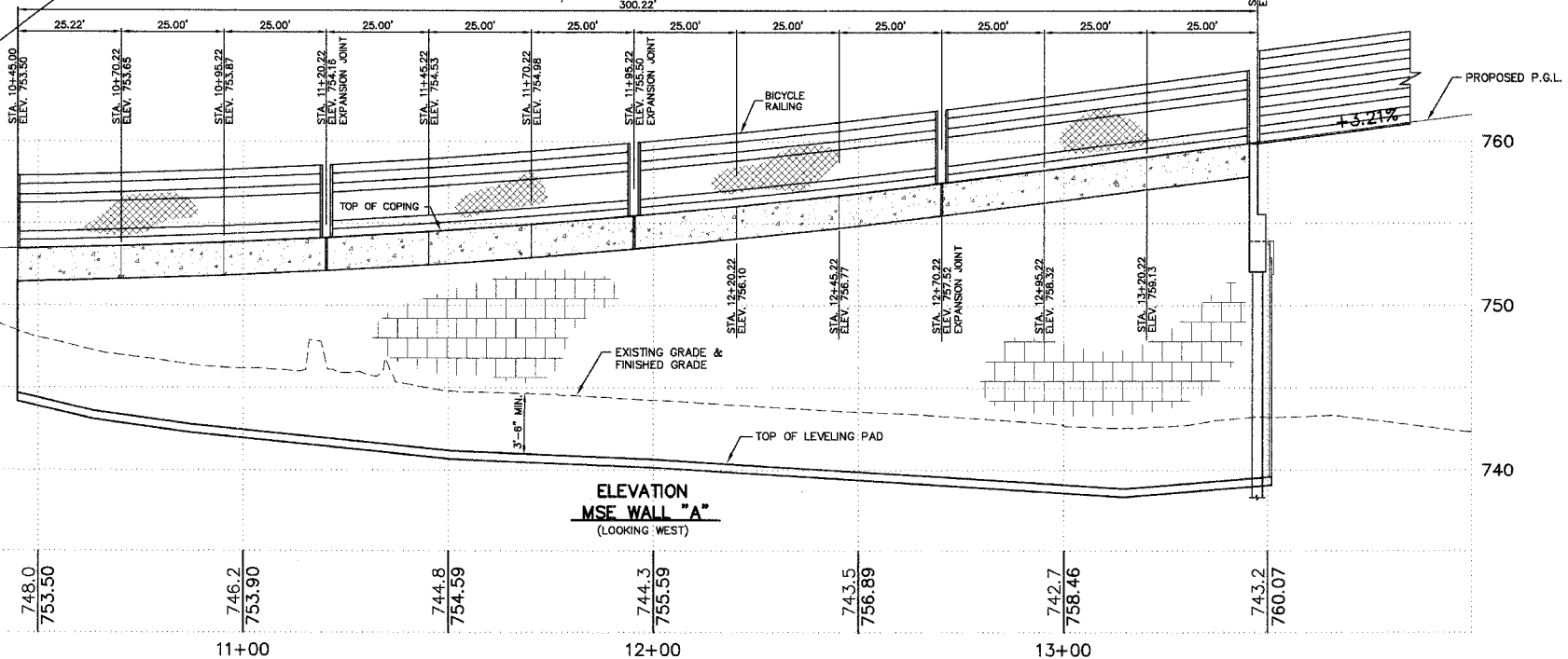
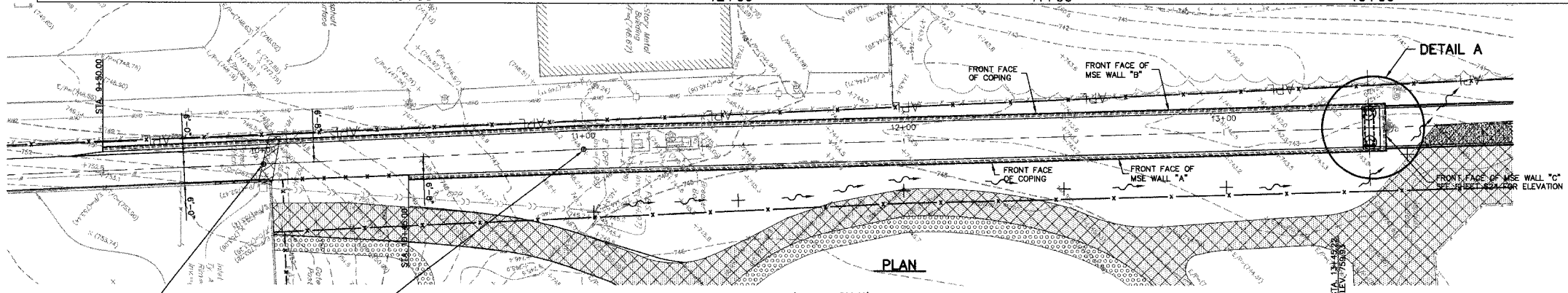
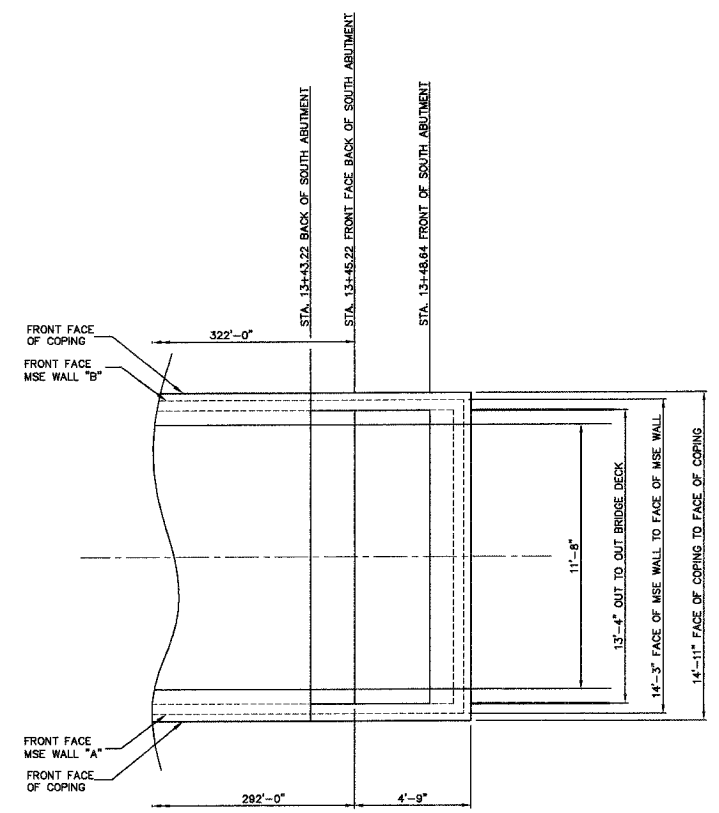
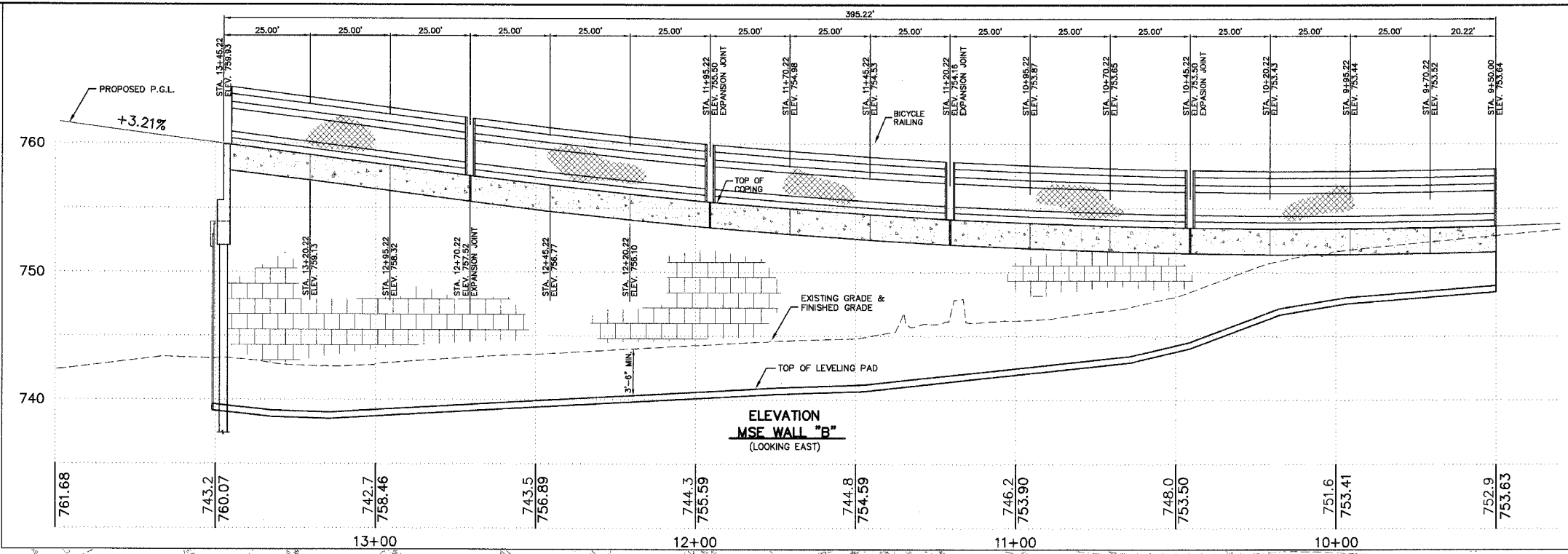
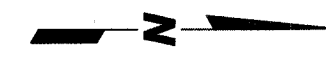


CONTRACT NO. 83560



BILL OF MATERIAL

ITEM	UNIT	TOTAL
Mechanically Stabilized Earth Retaining Wall	Sq. Ft.	9,900
Structure Excavation	Cu. Yd.	636

- NOTES:
- ALL ELEVATIONS SHOWN ARE ALONG P.G.L.
 - THE CONTRACTOR WILL BE RESPONSIBLE TO DESIGN AND CONSTRUCT MSE WALLS ACCORDING TO IDOT GUIDE BRIDGE SPECIAL PROVISION "MECHANICALLY STABILIZED EARTH RETAINING WALLS".
 - THE SHAPE, TEXTURE AND COLOR OF THE WALL PANELS WILL BE SUBJECT TO THE APPROVAL OF THE ENGINEER.

INDEX OF BRIDGE SHEETS
SHEET S22 OF S29
DWG: WALL PROF ABC
Copyright © 2003 Cemcon, Ltd. All rights reserved.

PREPARED FOR:
WHEATON PARK DISTRICT
666 S. MAIN STREET
WHEATON, ILLINOIS 60187



PREPARED BY:
CEMCON, Ltd.
Consulting Engineers, Land Surveyors & Planners
2280 White Oak Circle, Suite 100
Aurora, Illinois 60504-9675
Ph: 630.862.2100 Fax: 630.862.2199
E-Mail: cadd@cemcon.com Website: www.cemcon.com

REVISIONS					
NO.	DATE	DESCRIPTION	NO.	DATE	DESCRIPTION

MSE WALLS A, B & C

PEDESTRIAN/BICYCLE BRIDGE OVER UNION PACIFIC RAILROAD

FILE NAME: WALL PROF	DSGN. BY: JAC/KK	JOB NO.: 551.007	FLD. BK./PG.: -----	SHEET NO.
DISC. NUMBER: 551007	DRN. BY: MD	DATE: 12-21-04	SCALE: 1" = 20'H,5'V	35 of 54