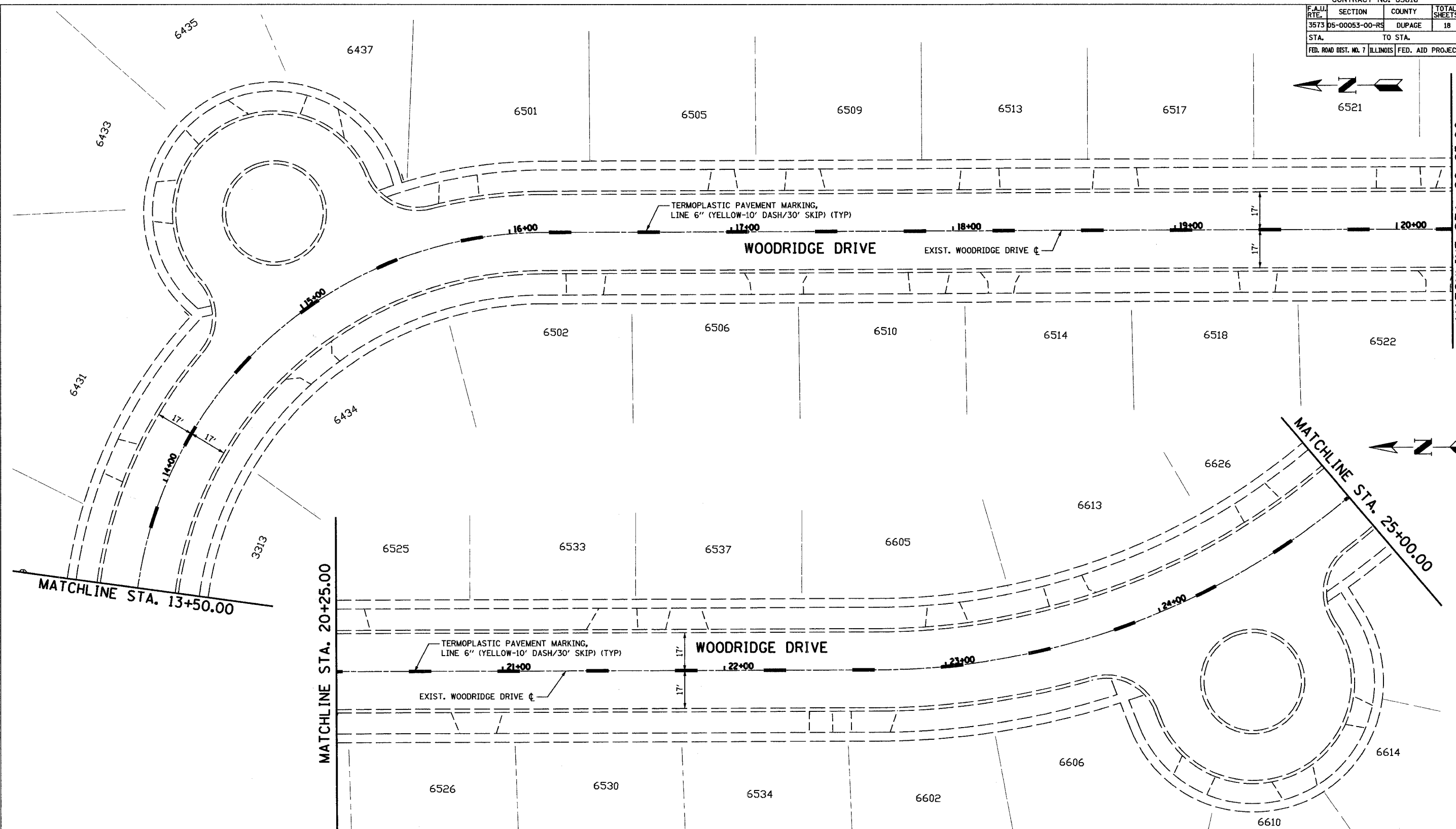
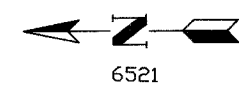
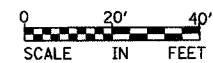


CONTRACT NO. 83816				
F.A.U. RTE.	SECTION	COUNTY	TOTAL SHEETS	SHEET NO.
3573	05-00053-00-RS	DUPAGE	18	9
STA.		TO STA.		
FED. ROAD DIST. NO. 7		ILLINOIS	FED. AID PROJECT	



PLOT DATE = #DATE#
 FILE NAME = #FILE#
 PLOT SCALE = #SCALE#
 USER NAME = #USER#



REVISIONS	
NAME	DATE

ILLINOIS DEPARTMENT OF TRANSPORTATION
 VILLAGE OF WOODRIDGE

PROPOSED PAVEMENT MARKINGS
STA. 13+50.00 TO STA. 25+00.00

 VERT. 1" = 20'
 HORIZ. SCALE: 1" = 40'
 DATE: SEPTEMBER 7, 2005
 DRAWN BY: LM
 CHECKED BY: KLM