

STATE OF ILLINOIS
DEPARTMENT OF TRANSPORTATION
DIVISION OF HIGHWAYS
PLANS FOR PROPOSED
FEDERAL AID HIGHWAY

F.A.P. RTE.	SECTION	COUNTY	TOTAL SHEETS	SHEET NO.
870	04-00051-00-SW	DUPAGE	46	1
FED. ROAD DIST. NO.		ILLINOIS	FED. AID PROJECT CONTRACT NO. 83820	

FOR INDEX OF SHEETS, SEE SHEET NO. 2

TRAFFIC DATA

ADT:

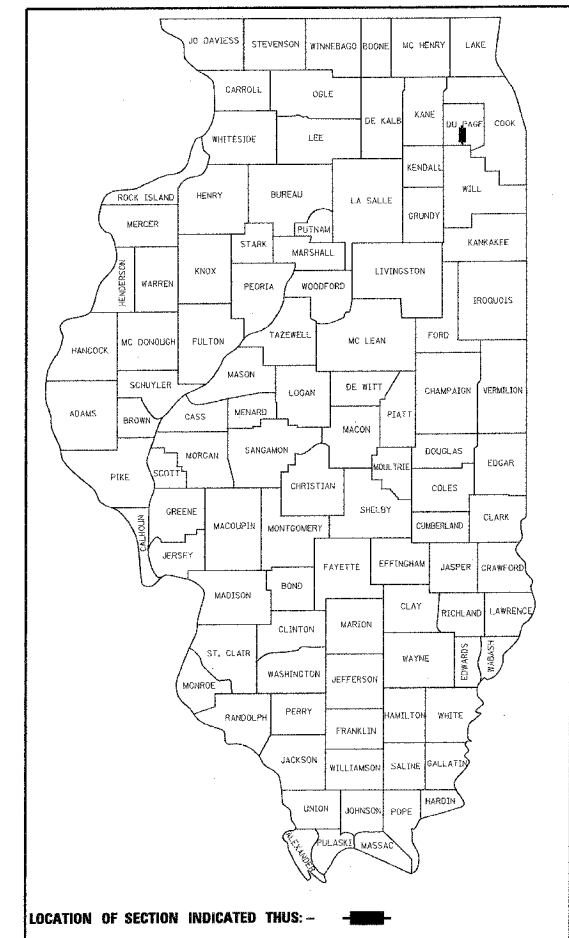
IL RTE 53, ROLLING ROAD TO
 OGDEN AVE. = 29,800 (2002)

IL RTE 53, OGDEN AVE. TO
 WARRENVILLE RD. = 25,500 (2002)

SPEED LIMIT:

IL RTE 53 = 35 MPH

F.A.P. ROUTE 870 (IL RTE 53)
SECTION: 04-00051-00-SW
FROM ROLLING DR. TO WARRENVILLE RD. (F.A.U. 1479)
SIDEWALK CONSTRUCTION AND
TRAFFIC SIGNAL MODIFICATIONS
PROJECT: F-0870(005)
VILLAGE OF LISLE
DUPAGE COUNTY
C-91-194-04



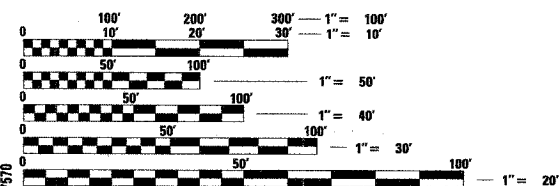
LOCATION OF SECTION INDICATED THUS: - ■ -

PROJECT LOCATED IN
 VILLAGE OF LISLE

VILLAGE OF LISLE
 APPROVED: Oct 21 2005
Ray L. Peterson
 PUBLIC WORKS DIRECTOR

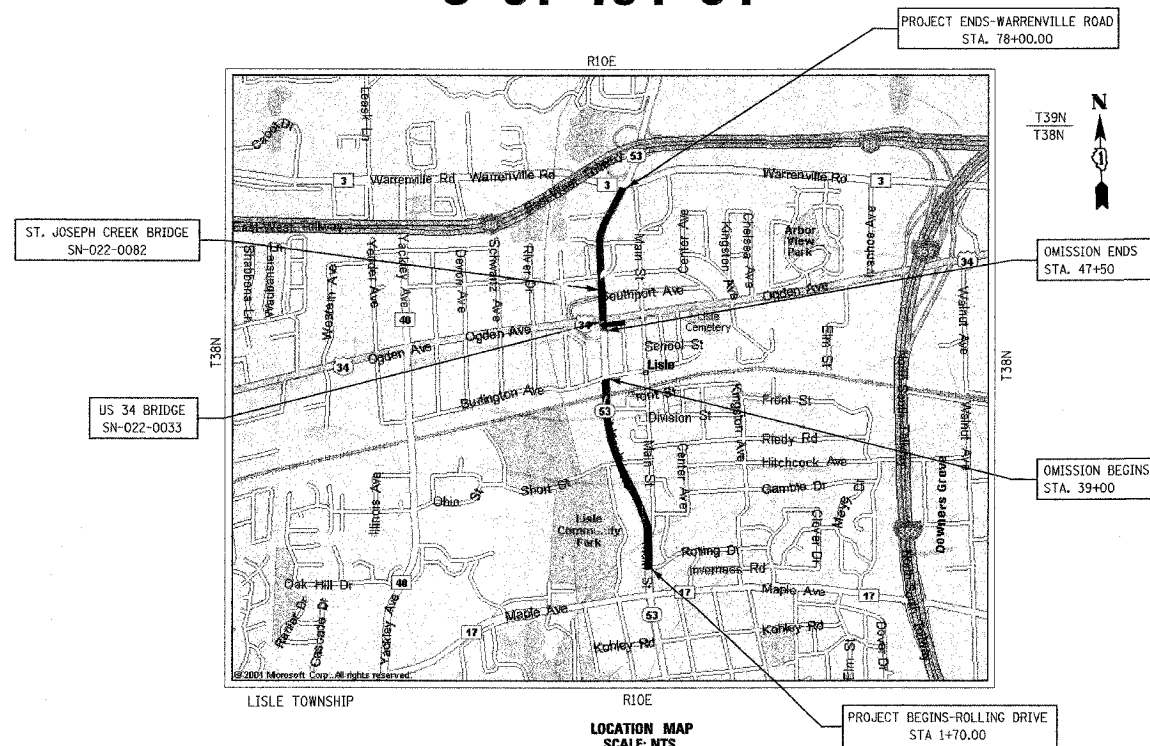
STATE OF ILLINOIS
DEPARTMENT OF TRANSPORTATION
 APPROVED: November 3 2005
[Signature]
 BUREAU CHIEF OF LOCAL ROAD AND STREETS
 APPROVED: Nov. 3 2005
Diane M. O'Keefe
 DEPUTY DIRECTOR OF HIGHWAYS, REGION ENGINEER

PRINTED BY AUTHORITY OF THE STATE OF ILLINOIS



FULL SIZE PLANS HAVE BEEN PREPARED USING STANDARD ENGINEERING SCALES. REDUCED SIZED PLANS WILL NOT CONFORM TO STANDARD SCALES. IN MAKING MEASUREMENTS ON REDUCED PLANS, THE ABOVE SCALES MAY BE USED.

FOR UTILITY INFORMATION, CONTACT J.U.L.I.E.
 (JOINT UTILITY LOCATION INFORMATION FOR EXCAVATION)
 AT 1-800-892-0123



GROSS LENGTH OF PROJECT: 7,630 FT. (1.45 MILES)
 NET LENGTH OF PROJECT: 6,780 FT. (1.28 MILES)

IDOT FEDERAL AID DESIGN ENGINEER: CHARLES RIDDLE, P.E. (847) 705-4406

CONSULTANT: JAMES J. BENES & ASSOCIATES, INC. (630) 719-7970

CONTRACT NO. 83820

COUNTY: DUPAGE SECTION: 04-00051-00-SW F.A.P. ROUTE: 870