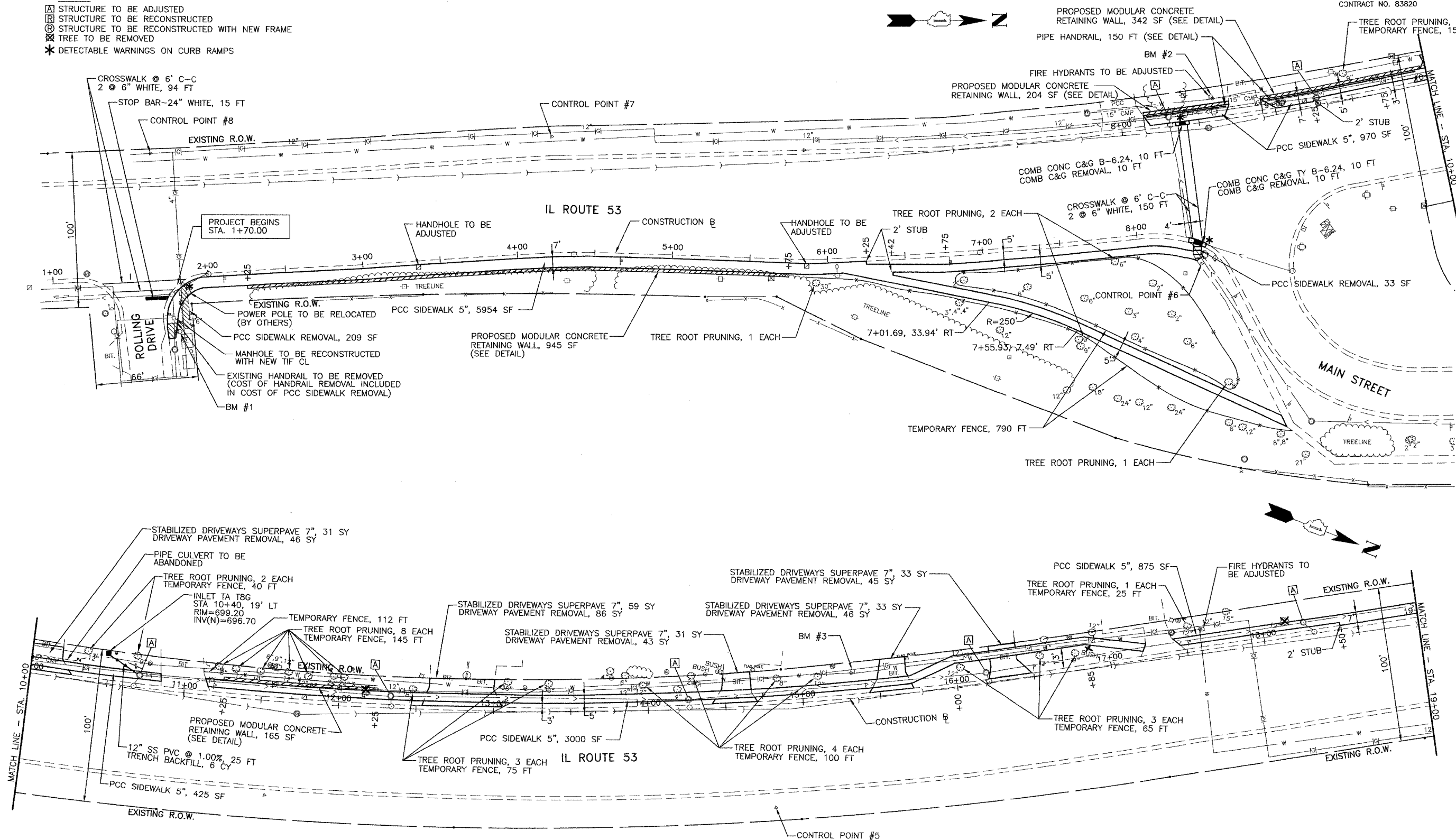


F.A.P. RTE.	SECTION	COUNTY	TOTAL SHEETS	SHEET NO.
870	04-00051-00-SW	DuPAGE	46	6
STA. 1+00 TO STA. 19+00		FED. ROAD DIST. NO. ILLINOIS FED. AID PROJECT		
CONTRACT NO. 83820				

- LEGEND**
- ⊠ STRUCTURE TO BE ADJUSTED
 - ⊡ STRUCTURE TO BE RECONSTRUCTED
 - ⊞ STRUCTURE TO BE RECONSTRUCTED WITH NEW FRAME
 - ⊗ TREE TO BE REMOVED
 - * DETECTABLE WARNINGS ON CURB RAMPS



DRAWN SMP
 CHECKED BDH

DATE 9/21/05
 SCALE 1" = 30'

JAMES J. BENES & ASSOCIATES, INC.
 950 Warrenville Road, Suite 101, Lisle, Illinois 60532
 Tel. (630) 719-7570 · Fax (630) 719-7589



VILLAGE OF LISLE
IL ROUTE 53 SIDEWALK IMPROVEMENTS

REVISIONS		
NO.	DATE	DESCRIPTION

GEOMETRIC PLAN

DRAWING NO.
 6 OF 46