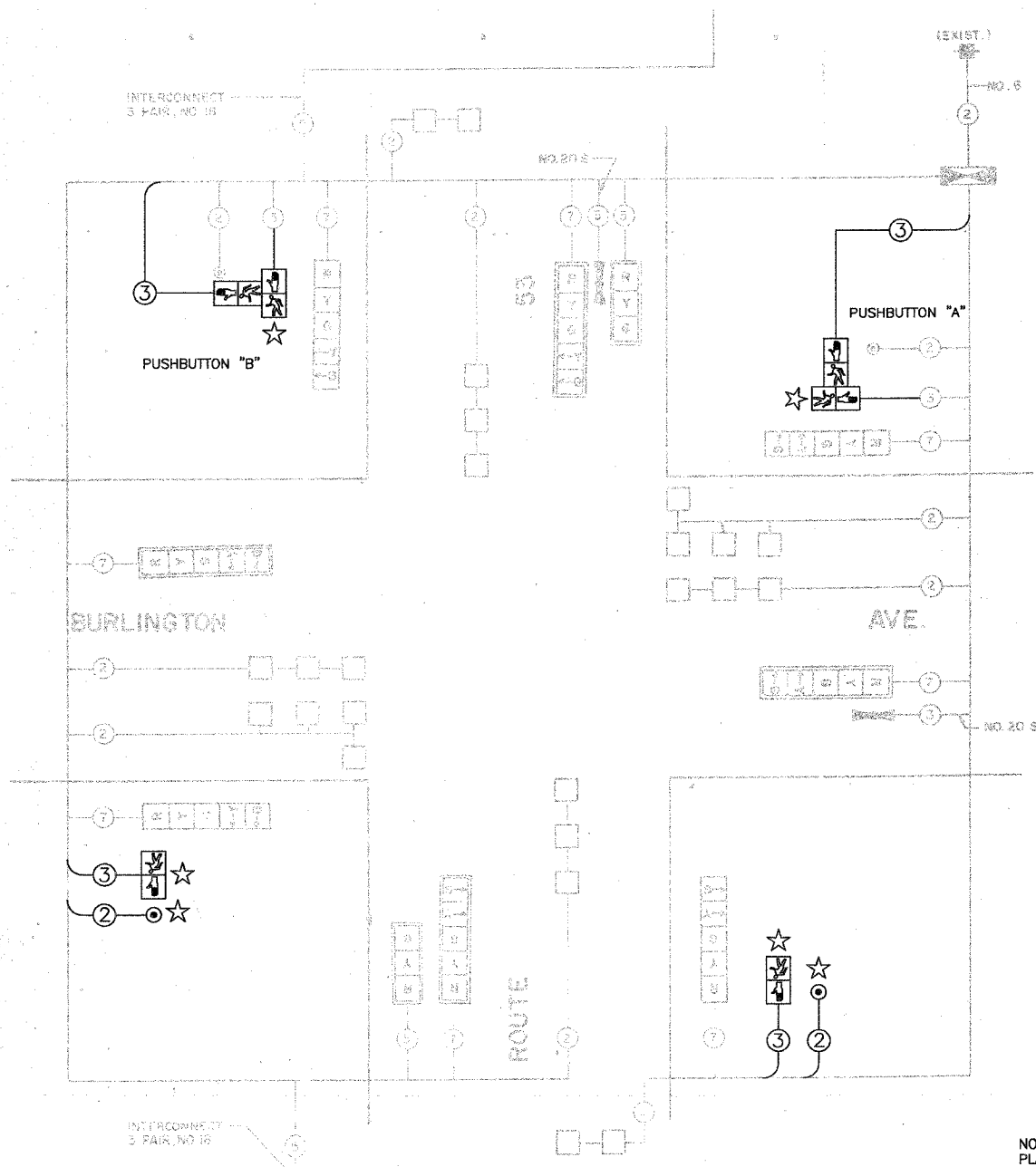


**SCHEDULE OF QUANTITIES**

QUANTITY	UNIT	DESCRIPTION
4	EACH	SIGNAL HEAD, ALUMINUM, 1-FACE, 5-SECTION, PAST ARM MOUNTED
4	EACH	SIGNAL HEAD, ALUMINUM, 1-FACE, 5-SECTION, BRACKET MOUNTED
4	EACH	SIGNAL HEAD, ALUMINUM, 1-FACE, 3-SECTION, PAST ARM MOUNTED
2	EACH	PEDESTRIAN SIGNAL HEAD, ALUMINUM, 1-FACE, BRACKET MOUNTED
2	EACH	PEDESTRIAN PUSHBUTTON
6	EACH	TRAFFIC SIGNAL BACKPLATE
4	EACH	TRAFFIC SIGNAL POST, FERROUS, 26 FT.
2	EACH	STEEL PAST ARM ASSEMBLY AND POLE, 24 FT.
1	EACH	STEEL PAST ARM ASSEMBLY AND POLE, 25 FT.
2	EACH	STEEL PAST ARM ASSEMBLY AND POLE, 26 FT.
672	LIN. FT.	GALVANIZED STEEL CONDUIT IN TRENCH 2"
492	LIN. FT.	GALVANIZED STEEL CONDUIT IN TRENCH 1 1/2"
39	LIN. FT.	GALVANIZED STEEL CONDUIT IN TRENCH 1"
36	LIN. FT.	GALVANIZED STEEL CONDUIT IN TRENCH 3/4"
87	LIN. FT.	GALVANIZED STEEL CONDUIT, PUSHED 2"
46	LIN. FT.	GALVANIZED STEEL CONDUIT, PUSHED 2 1/2"
67	LIN. FT.	GALVANIZED STEEL CONDUIT, PUSHED 3"
82	LIN. FT.	GALVANIZED STEEL CONDUIT, PUSHED 4"
1162	LIN. FT.	ELECTRIC CABLE IN CONDUIT NO. 14 2/C
270	LIN. FT.	ELECTRIC CABLE IN CONDUIT NO. 14 3/C
2,000	LIN. FT.	ELECTRIC CABLE IN CONDUIT NO. 14 3/C
1884	LIN. FT.	ELECTRIC CABLE IN CONDUIT NO. 14 2/C, TWISTED, SHIELDED
12	LIN. FT.	CONCRETE FOUNDATION, TYPE A
40	LIN. FT.	CONCRETE FOUNDATION, TYPE E, 24" DIA.
7	EACH	CONCRETE HANDHOLE
4	EACH	CONCRETE DUTY HANDHOLE
830	LIN. FT.	TRENCH AND BACKFILL
1	EACH	CONCRETE HANDHOLE
1	EACH	REMOVE EXISTING TRAFFIC SIGNAL EQUIPMENT
2	EACH	FIX. PRIORITY
2	EACH	EMERGENCY VEHICLE PRIORITY SYSTEM DETECTOR UNIT
1	EACH	EMERGENCY VEHICLE PRIORITY SYSTEM MASTER UNIT
190	LIN. FT.	EMERGENCY VEHICLE PRIORITY SYSTEM LEAD-IN CABLE IN CONDUIT
912	LIN. FT.	DETECTOR LOOP
1	EACH	COORDINATION MODULE
1	EACH	TELEMETRY MODULE
8	EACH	INDUCTION LOOP DETECTOR AMPLIFIER
8	CONCRETE FOUNDATION, TYPE B	
130	LIN. FT.	UNIT DUCT, WITHOUT CABLE, IN TRENCH 1"
1	EACH	MAINTENANCE OF EXISTING TRAFFIC SIGNAL INSTALLATION
20	LIN. FT.	GALVANIZED STEEL CONDUIT IN TRENCH 1 1/2"
1	EACH	FULL-ACTUATED CONTROLLER, STANDARD SEQUENCE W, 8 PHASES, IN TYPE V CABINET
17	SQ. FT.	SIGN PANEL TYPE 1
228	LIN. FT.	ELECTRIC CABLE IN CONDUIT NO. 14 2/C

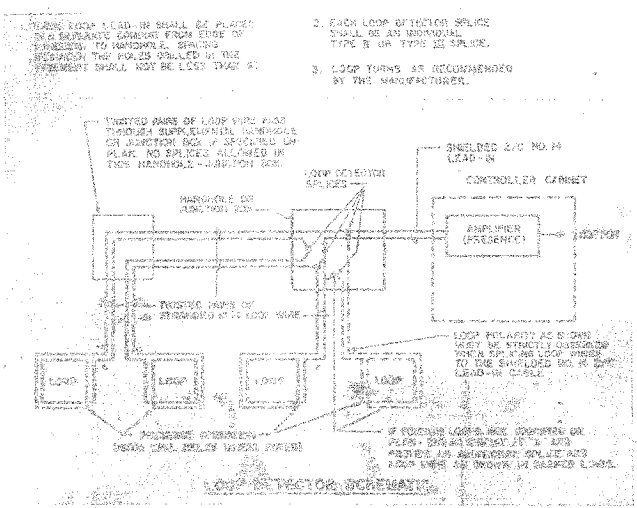


**CABLE PLAN LEGEND**

- 12" TRAFFIC SIGNAL SECTION
- 12" PEDESTRIAN SIGNAL SECTION
- 12" (300mm) PEDESTRIAN SIGNAL SECTION
- CONTROLLER CABINET
- SERVICE INSTALLATION
- VEHICLE DETECTOR, INDUCTION LOOP
- PRESENCE DETECTOR
- DETECTOR CABLE (UNLESS ALL LOOP DETECTOR CABLE TO BE SHIELDED. ALL CABLE NO. 14 EXCEPT AS INDICATED.)
- SIGNAL FACE WITH BACKPLATE
- "9" INDICATOR PROGRAMMED
- OPTICAL DETECTOR
- SHIELDED

**SCHEDULE OF SIGNAL HEADS**

- 4 EACH SIGNAL HEAD, ALUMINUM, 1-FACE, 5-SECTION WITH 12" LENSES, PAST ARM MOUNTED
- 2 EACH SIGNAL HEAD, ALUMINUM, 1-FACE, 3-SECTION WITH 12" LENSES, PAST ARM MOUNTED
- 4 EACH SIGNAL HEAD, ALUMINUM, 1-FACE, 5-SECTION WITH 12" LENSES, BRACKET MOUNTED
- 2 EACH PEDESTRIAN SIGNAL HEAD, ALUMINUM, 1-FACE, BRACKET MOUNTED
- 2 EACH PEDESTRIAN PUSH BUTTON



**SCHEDULE OF QUANTITIES**  
IL ROUTE 53 (Lincoln Avenue) and Burlington Avenue

1	EACH	MAINTENANCE OF TRAFFIC SIGNAL INSTALLATION
406	FOOT	ELECTRIC CABLE IN CONDUIT, SIGNAL NO. 14 2C
934	FOOT	ELECTRIC CABLE IN CONDUIT, SIGNAL NO. 14 3C
2	EACH	PEDESTRIAN SIGNAL HEAD, L.E.D., 1-FACE BRACKET MOUNTED
2	EACH	PEDESTRIAN SIGNAL HEAD, L.E.D., 2-FACE BRACKET MOUNTED
2	EACH	PEDESTRIAN PUSH-BUTTON
1	EACH	MODIFY EXISTING CONTROLLER
1	EACH	REMOVE EXISTING TRAFFIC SIGNAL EQUIPMENT

NOTE: PUSHBUTTON "A" SHALL PLACE A CALL IN PHASES 2 AND 4. PUSHBUTTON "B" SHALL PLACE A CALL IN PHASES 4 AND 6.

NOTE: THIS PLAN IS FOR THE SOLE PURPOSE OF INSTALLING PEDESTRIAN SIGNALS AND OTHER MODIFICATIONS AS INDICATED BY A ★. ALL OTHER WORK SHOWN IS FOR INFORMATION ONLY.

★ Plans revised by JAMES J. BENES & ASSOCIATES

REVISIONS	
NAME	DATE
ADDITION OF PEDESTRIAN EQUIPMENT	04/25/05

ILLINOIS DIVISION OF HIGHWAYS  
TRAFFIC SIGNAL INSTALLATION  
ROUTE 53 AND BURLINGTON AVE.  
CABLE PLAN