

STATE OF ILLINOIS  
DEPARTMENT OF TRANSPORTATION  
DIVISION OF HIGHWAYS

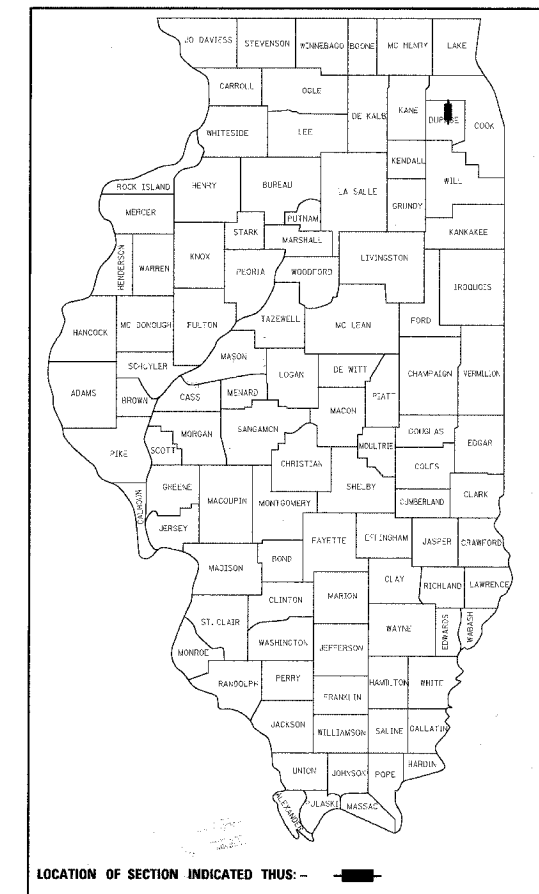
**PLANS FOR PROPOSED  
FEDERAL AID HIGHWAY**

PRESIDENT STREET (FAU 2424)  
FROM FULLERTON AVENUE (FAU 1379) TO MILL POND DRIVE (FAU 2424)  
FULLERTON AVENUE (FAU 1379)  
FROM SCHMALE ROAD (FAU 2566) TO BLOOMINGDALE ROAD (FAP 364)  
MILL POND DRIVE (FAU 2424)  
FROM SCHMALE ROAD (FAU 2566) TO PRESIDENT STREET (FAU 2424)  
RESURFACING  
L.A. SECTION No. 05-00052-00-RS  
PROJECT No. M-8003 (517)  
VILLAGE OF GLENDALE HEIGHTS  
DUPAGE COUNTY  
C-91-201-05

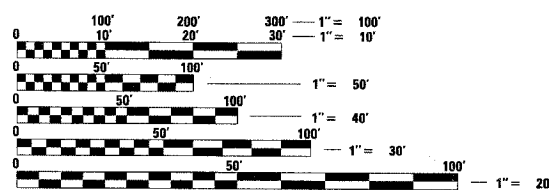
F.A.U. RTE.	SECTION	COUNTY	TOTAL SHEETS	SHEET NO.
--	05-00052-00-RS	DUPAGE	20	1
FED. ROAD DIST. NO. 1	ILLINOIS	FED. AID PROJECT		

CONTRACT NO. 83821

DESCRIPTION	INDEX OF SHEETS	SHEET NO.
TITLE SHEET		1
SUMMARY OF QUANTITIES		2
GENERAL NOTES & IDOT STANDARDS		3
TYPICAL SECTIONS		4
PRESIDENT STREET EXISTING CONDITIONS AND REMOVAL PLAN		5-6
FULLERTON STREET EXISTING CONDITIONS AND REMOVAL PLAN		7-8
MILL POND DRIVE EXISTING CONDITIONS AND REMOVAL PLAN		9
PRESIDENT STREET PROPOSED PLAN		10-11
FULLERTON AVENUE PROPOSED PLAN		12-13
MILL POND DRIVE PROPOSED PLAN		14
CONSTRUCTION DETAILS		15
CURB OR CURB AND GUTTER REMOVAL AND REPLACEMENT		16
PAVEMENT PATCHING FOR BITUMINOUS SURFACED PAVEMENT		17
BUTT JOINT AND BITUMINOUS TAPER DETAILS		18
DISTRICT ONE TYPICAL PAVEMENT MARKINGS		19
TRAFFIC CONTROL AND PROTECTION FOR SIDE ROADS, INTERSECTIONS, AND DRIVEWAYS		20



IDOT FEDERAL-AID DESIGN ENGINEER: ABIGAIL BRINKS 847-705-4233

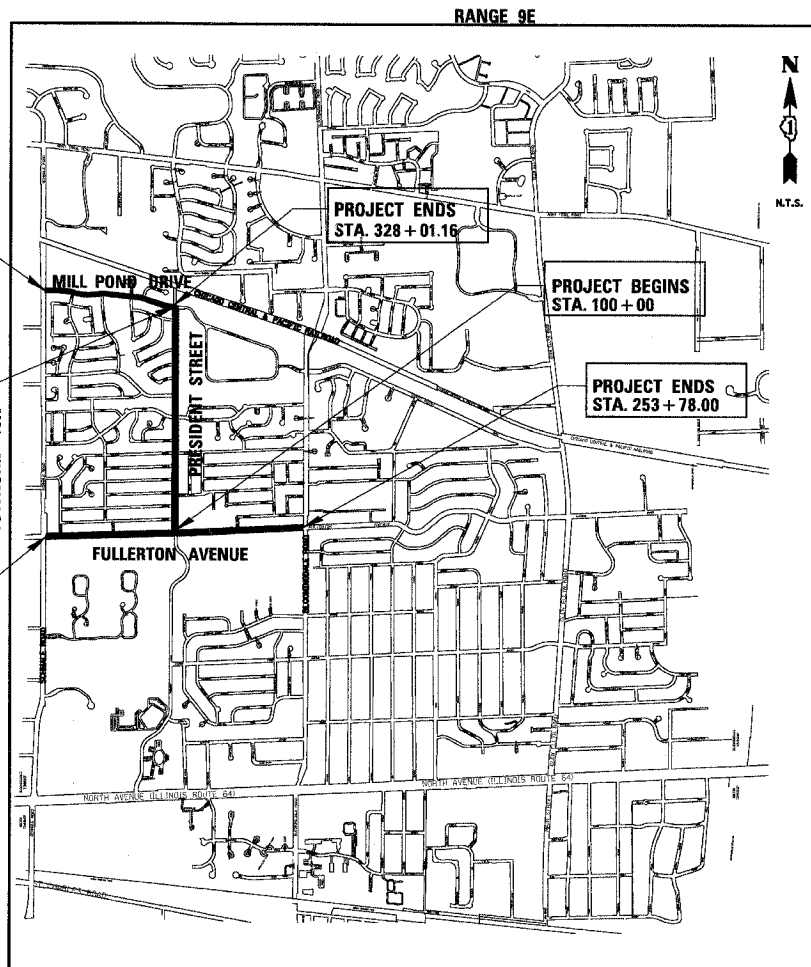


FULL SIZE PLANS HAVE BEEN PREPARED USING STANDARD ENGINEERING SCALES. REDUCED SIZED PLANS WILL NOT CONFORM TO STANDARD SCALES. IN MAKING MEASUREMENTS ON REDUCED PLANS, THE ABOVE SCALES MAY BE USED.

J.U.L.I.E.  
JOINT UTILITY LOCATION INFORMATION FOR EXCAVATION  
1-800-892-0123

CONTRACT NO. 83821

**CB** CHRISTOPHER B. BURKE ENGINEERING LTD.  
9575 West Higgins Road, Suite 600  
Rosemont, Illinois 60018 (847) 823-0500



LOCATION MAP  
N.T.S.

GROSS LENGTH OF PROJECT = 12775 FEET (2.42 MI)  
NET LENGTH OF PROJECT = 12775 FEET (2.42 MI)

TRAFFIC DATA (PRESIDENT STREET)  
ADT (YEAR) = 1889 (2004)  
SPEED LIMIT = 25 MPH

TRAFFIC DATA (FULLERTON AVENUE)  
ADT (YEAR) = 8523 (2004)  
SPEED LIMIT = 25 MPH

TRAFFIC DATA (MILL POND DRIVE)  
ADT (YEAR) = 3853 (2004)  
SPEED LIMIT = 25 MPH

STATE OF ILLINOIS  
DEPARTMENT OF TRANSPORTATION  
DIVISION OF HIGHWAYS

APPROVED October 20 2005  
[Signature]  
VILLAGE OF GLENDALE HEIGHTS

APPROVED NOVEMBER 1 2005  
[Signature]  
LOCAL ROADS AND STREETS

APPROVED Nov 2 2005  
Diane M. O'Keefe /cd  
DEPUTY DIRECTOR OF HIGHWAYS, REGION ENGINEER

**LEE M. FELL**  
ILLINOIS REGISTRATION No. 062-053708  
EXPIRATION DATE: 11/30/2005

[Signature]  
ENGINEER  
DATE: 10/27/05