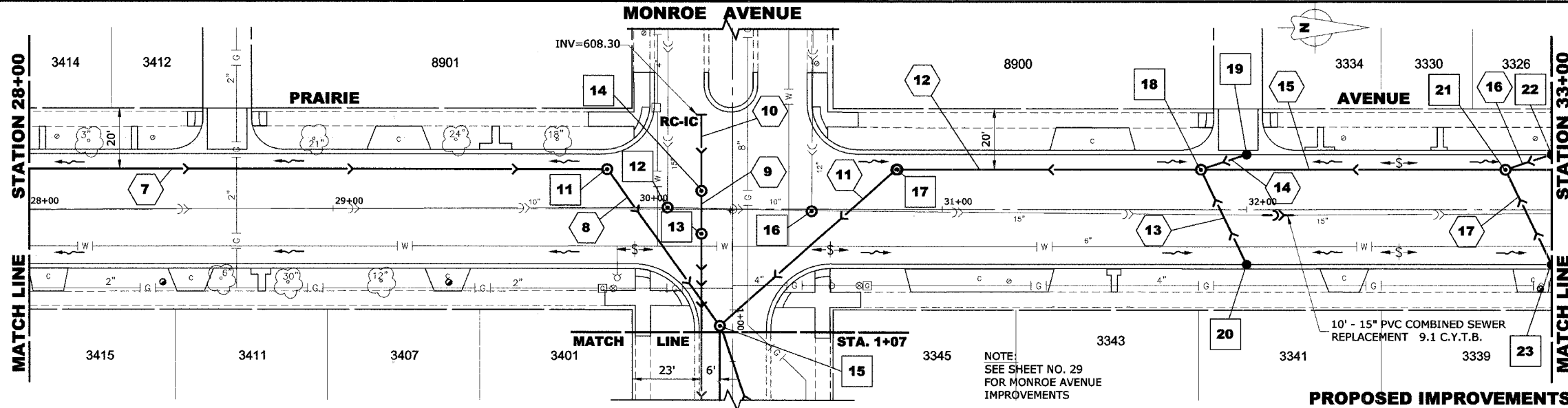


STRUC. NO.	STA.	OFFSET	TYPE	RIM ELEV.	INV. ELEV.
11	29+90	12' LT.	R.D. MANHOLE, 4' DIA., TYPE 1 FRAME, CLOSED LID	619.50	611.90 S 611.90 NE
12	30+10	1' LT.	R.D. COMBINED SEWER MANHOLE, 4' DIA., TYPE 1 FRAME, CLOSED LID	620.05	611.14 W 610.04 N-S
13	30+21	8' RT.	R.D. MANHOLE, 5' DIA., TYPE 1 FRAME, CLOSED LID	620.00	608.24 E 605.30 W
14	30+21	6' LT.	R.D. MANHOLE, 5' DIA., TYPE 1 FRAME, CLOSED LID	620.00	608.27 W 605.50 E
15	30+27	39' RT.	R.D. MANHOLE, 5' DIA., TYPE 1 FRAME, CLOSED LID	619.60	614.15 NE 611.70 SW 608.20 E 605.75 NW
16	30+57	1' RT.	R.D. COMBINED SEWER MANHOLE, 4' DIA., TYPE 1 RAME, CLOSED LID	620.10	611.34 W 610.39 N-S
17	30+85	13' LT.	R.D. MANHOLE, 5' DIA., TYPE 1 FRAME, CLOSED LID	619.45	611.40 N 606.50 SE
18	31+85	13' LT.	R.D. MANHOLE, 5' DIA., TYPE 1 FRAME, CLOSED LID	619.00	614.55 NW 614.35 NE 611.50 N-S
19	32+00	18' LT.	R.D. CATCH BASIN, 4' DIA. TYPE 1 FRAME, OPEN LID	618.70	614.70
20	32+00	18' RT.	R.D. CATCH BASIN, 4' DIA. TYPE 1 FRAME, OPEN LID	618.70	614.70
21	32+85	13' LT.	R.D. MANHOLE, 5' DIA., TYPE 1 FRAME, CLOSED LID	619.00	614.55 NW 614.35 NE 611.60 N-S
22	33+00	18' LT.	R.D. CATCH BASIN, 4' DIA. TYPE 1 FRAME, OPEN LID	618.70	614.70
23	33+00	18' RT.	R.D. CATCH BASIN, 4' DIA. TYPE 1 FRAME, OPEN LID	618.70	614.70



PIPE NO.	LENGTH	DIA.	TYPE	SLOPE	C.Y.T.B.
7	275'	15"	SS, TY-2, RCCP, CL-III	0.33%	163.6
8	65'	15"	SS, TY-2, RCCP, CL-III	0.32%	57.0
9	15'	42"	SS, TY-3, RCCP, CL-IV	1.33%	40.1
10	25'	42"	SS, TY-2, RCCP, CL-III	0.09%	49.5
11	75'	36"	SS, TY-3, RCCP, CL-IV	1.00%	172.5
12	100'	36"	SS, TY-2, RCCP, CL-III	0.10%	100.4
13	35'	10"	SS,PVC, SDR 26	1.00%	2.3
14	15'	10"	SS,PVC, SDR 26	1.00%	1.9
15	100'	36"	SS, TY-2, RCCP, CL-III	0.10%	93.3
16	15'	10"	SS,PVC, SDR 26	1.00%	2.3
17	35'	10"	SS,PVC, SDR 26	1.00%	0.9

