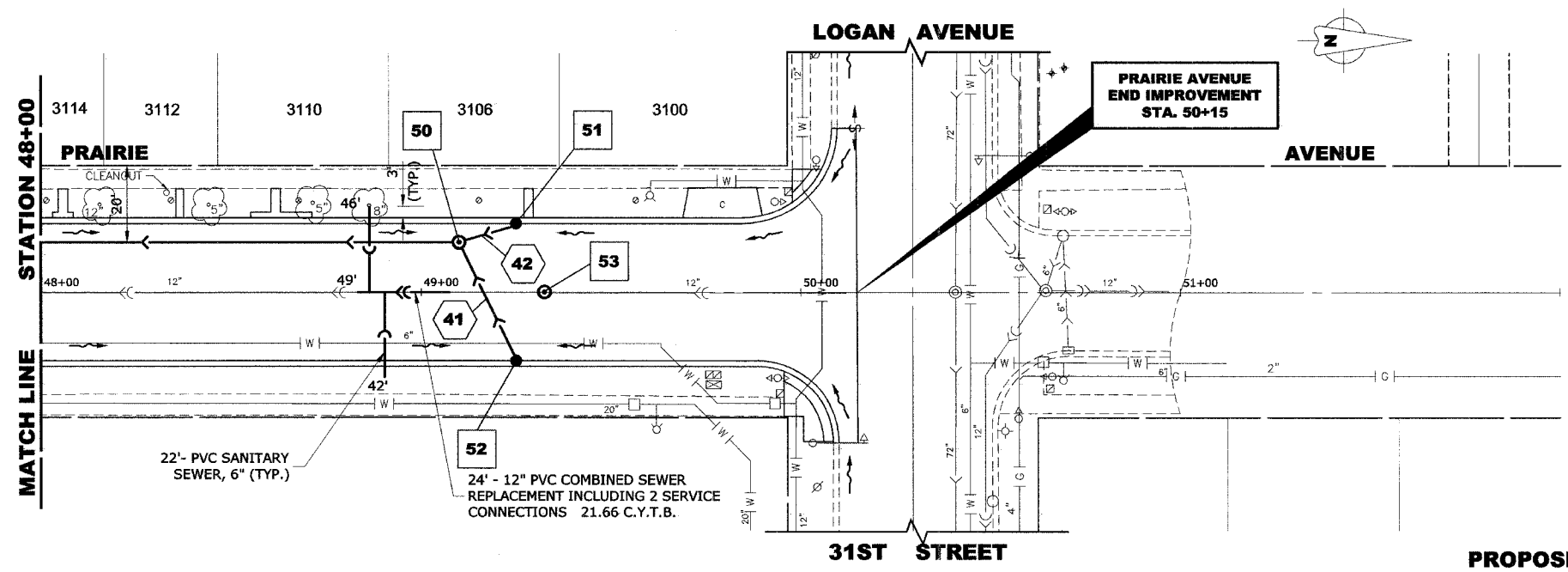


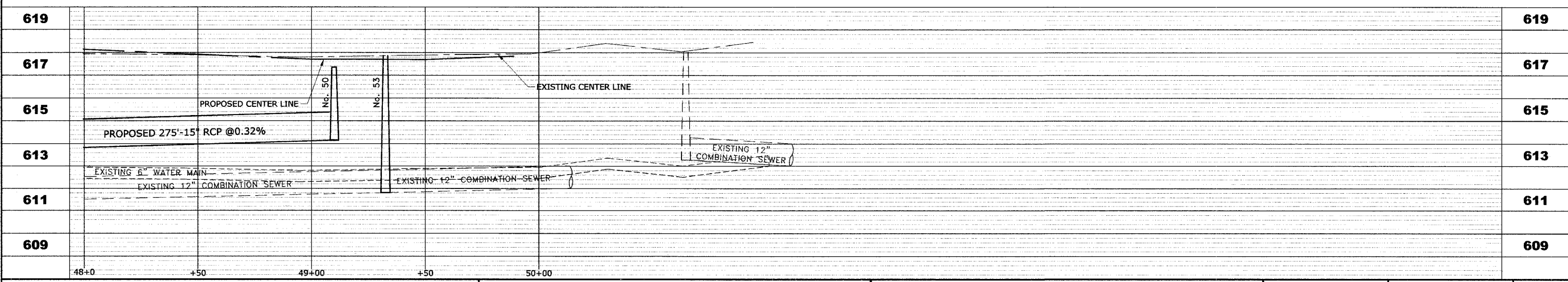
STRUC. NO.	STA.	OFFSET	TYPE	RIM ELEV.	INV. ELEV.
50	49+10	13' LT.	R.D. MANHOLE, 4' DIA., TYPE 1 FRAME, CLOSED LID	617.35	614.15 NW, NE 614.15 S
51	49+25	18' LT.	R.D. CATCH BASIN, 4' DIA. TYPE 1 FRAME, OPEN LID	617.05	614.30
52	49+25	18' RT.	R.D. CATCH BASIN, 4' DIA. TYPE 1 FRAME, OPEN LID	617.05	614.50
53	49+32	0	R.D. COMBINED SEWER MANHOLE, 4' DIA., TYPE 1 FRAME, CLOSED LID	617.70	611.80

EXISTING TOPOGRAPHY



PIPE NO.	LENGTH	DIA.	TYPE	SLOPE	C.Y.T.B.
41	35'	10"	SS, DIP, CLASS 52	1.00%	0.6
42	15'	10"	SS, DIP, CLASS 52	1.00%	1.0

PROPOSED IMPROVEMENTS



**HANCOCK ENGINEERING**  
 Civil Engineers  
 Municipal Consultants  
 Established 1911  
 9933 Roosevelt Road  
 Westchester, Illinois 60154-2780  
 Phone: 708/865-0300  
 Fax: 708/865-1212

**PRAIRIE AVENUE IMPROVEMENTS  
 PHASE I  
 VILLAGE OF BROOKFIELD, ILLINOIS**

**EXISTING AND PROPOSED  
 DRAINAGE AND UTILITIES  
 PLAN AND PROFILE**

SCALE: H: 1"=20', V: 1"=2'  
 DRAWN BY: MK/LEV  
 BOOK NO.: #1475, #1504  
 DATE: 11-04-05  
 E.H.E. NO.: 125-04-26301  
 SHEET **26** OF **49**