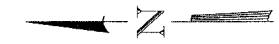


ROUTE NO.	SECTION	COUNTY	TOTAL SHEETS	SHEET NO.
F.A.U. 6385	00-00182-01-BR	McLEAN	33	7
FED. ROAD DIST. NO.	ILLINOIS	FED. AID PROJECT: 894-027-143		

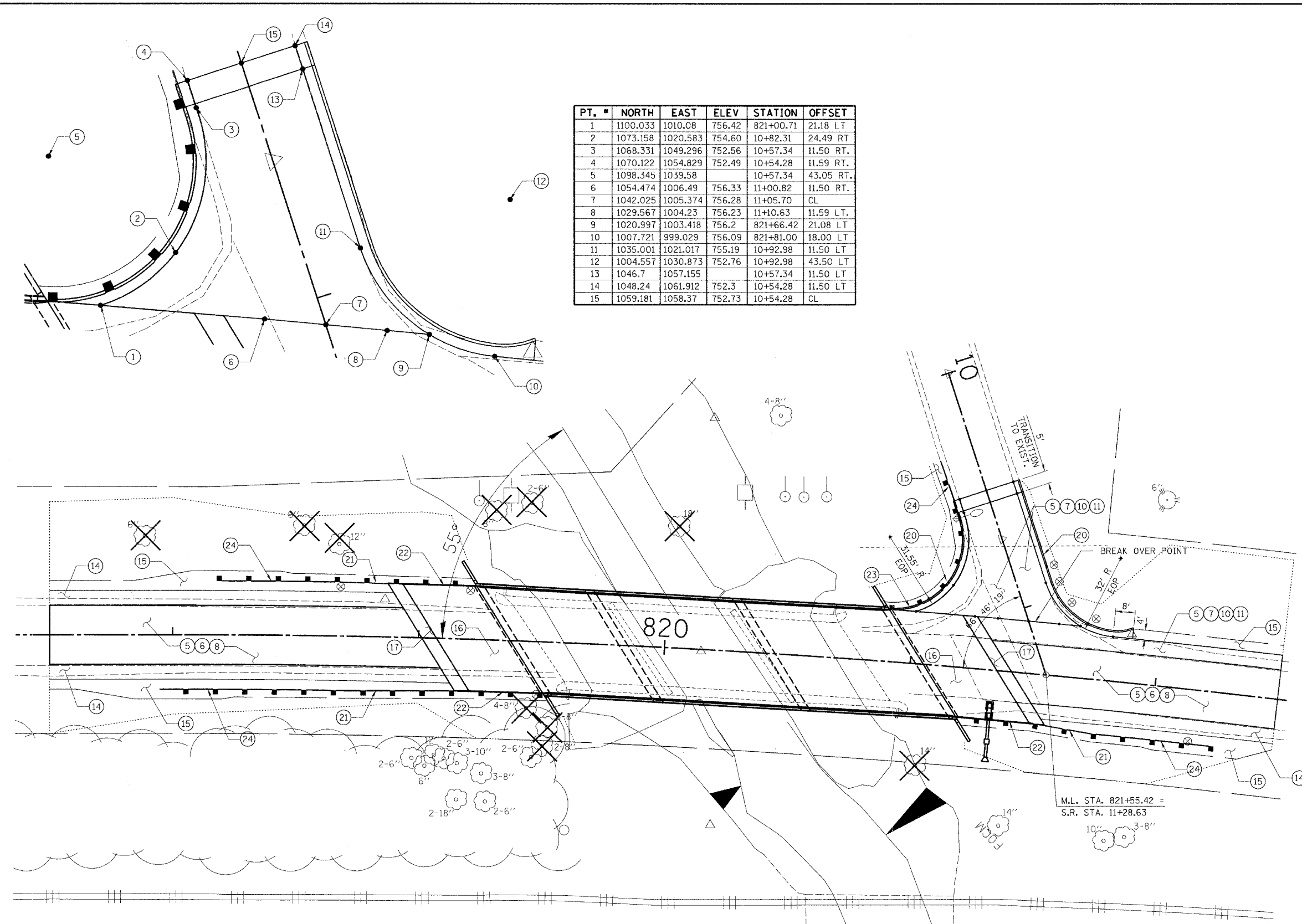
CONTRACT NO. 87269



PT. #	NORTH	EAST	ELEV	STATION	OFFSET
1	1100.033	1010.08	756.42	821+00.71	21.18 LT
2	1073.158	1020.583	754.60	10+82.31	24.49 RT
3	1068.331	1049.296	752.56	10+57.34	11.50 RT.
4	1070.122	1054.829	752.49	10+54.28	11.59 RT.
5	1098.345	1039.58		10+57.34	43.05 RT.
6	1054.474	1006.49	756.33	11+00.82	11.50 RT.
7	1042.025	1005.374	756.28	11+05.70	CL
8	1029.567	1004.23	756.23	11+10.63	11.59 LT.
9	1020.997	1003.418	756.2	821+66.42	21.08 LT
10	1007.721	999.029	756.09	821+81.00	18.00 LT
11	1035.001	1021.017	755.19	10+92.98	11.50 LT
12	1004.557	1030.873	752.76	10+92.98	43.50 LT
13	1046.7	1057.155		10+57.34	11.50 LT
14	1048.24	1061.912	752.3	10+54.28	11.50 LT
15	1059.181	1058.37	752.73	10+54.28	CL

**LEGEND**

- ① EXISTING BITUMINOUS PAVEMENT (3"±)
- ② EXISTING PCC BASE 8"
- ③ EXISTING SHOULDER
- ④ EXISTING GUTTER
- ⑤ BITUMINOUS CONCRETE SURFACE COURSE, SUPERPAVE MIX D, N50 (1 1/2" THICKNESS MIN.)
- ⑥ BITUMINOUS CONCRETE BINDER COURSE, SUPERPAVE IL 19, N50 (2" THICKNESS)
- ⑦ BITUMINOUS CONCRETE BINDER COURSE, SUPERPAVE IL 19, N50 (2.5" THICKNESS)
- ⑧ LEVELING BINDER (MACHINE METHOD) 1/2" MINIMUM THICKNESS
- ⑨ AREA REFLECTIVE CRACK CONTROL TREATMENT, SYSTEM A
- ⑩ AGGREGATE BASE COURSE, TYPE B 6"
- ⑪ AGGREGATE BASE COURSE SPECIAL 6"
- ⑫ BITUMINOUS SURFACE REMOVAL, BUTT-JOINT
- ⑬ BITUMINOUS MATERIALS (PRIME COAT)
- ⑭ BITUMINOUS SHOULDERS, SUPERPAVE 8"
- ⑮ AGGREGATE SHOULDERS 6"
- ⑯ BRIDGE APPROACH PAVEMENT
- ⑰ BRIDGE APPROACH PAVEMENT CONNECTOR (FLEXIBLE)
- ⑱ SEE STD 420401 FOR SUB-BASE GRANULAR MATERIAL
- ⑲ INCLUDED IN THE COST OF BRIDGE APPROACH PAVEMENT
- ⑳ COMBINATION CONCRETE CURB AND GUTTER, TYPE B-6.24
- ㉑ STEEL PLATE BEAM GUARDRAIL
- ㉒ TRAFFIC BARRIER TERMINAL TYPE 6
- ㉓ TRAFFIC BARRIER TERMINAL TYPE 6 SPECIAL
- ㉔ TRAFFIC BARRIER TERMINAL TYPE 1 SPECIAL



**HLR**  
 Rice, Berry and Associates  
 A Division of Hampton,  
 Lenzini and Renwick, Inc.  
 Civil & Structural Engineers  
 3085 Stevenson Drive  
 Suite 201  
 Springfield, Illinois 62703  
 217-546-3400  
 Account Number  
 12-59-0033-1  
 Date: 11/15/05  
 P.O. Box 1036  
 DuQuoin, Illinois 62832  
 618-790-4637  
 DESIGNED: L.F.S. | CHECKED: S.W.M. | DRAWN: T.W.K.

**INTERSECTION DETAIL**  
 SECTION 00-00182-01-BR  
 F.A.U. 6385 / C.H. 70  
 McLEAN COUNTY