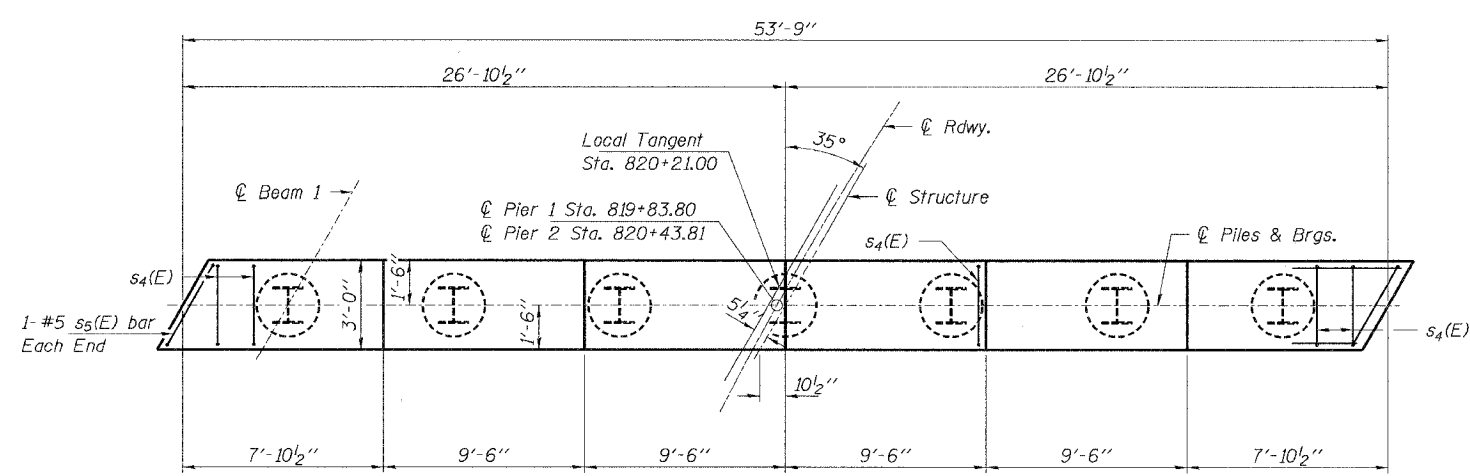
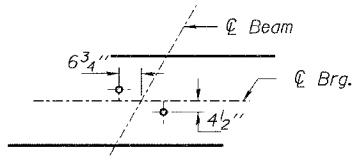


ROUTE NO.	SECTION	COUNTY	TOTAL SHEETS	SHEET NO.
F.A.U. 1685	00-00182-01-BR	McLEAN	33	29
FED. ROAD DIST. NO.	ILLINOIS FED. AID PROJECT-			

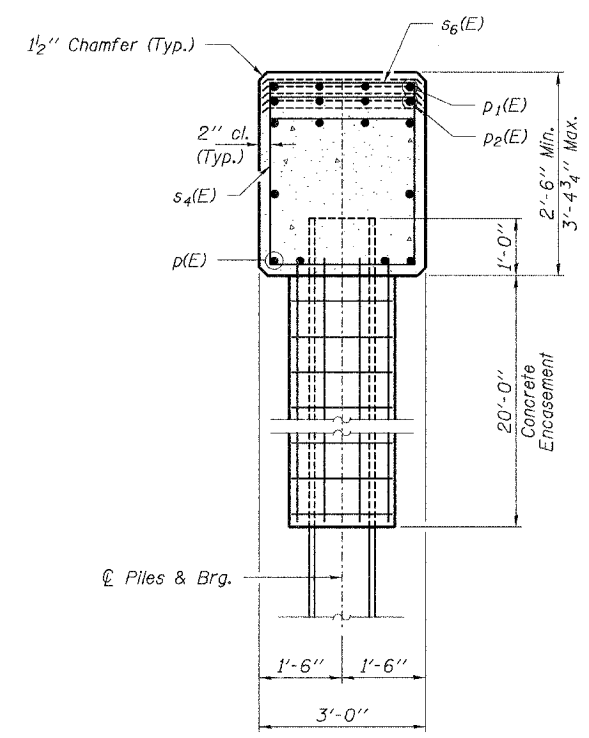
CONTRACT NO. 87269



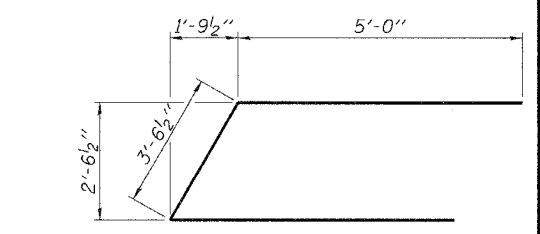
PLAN



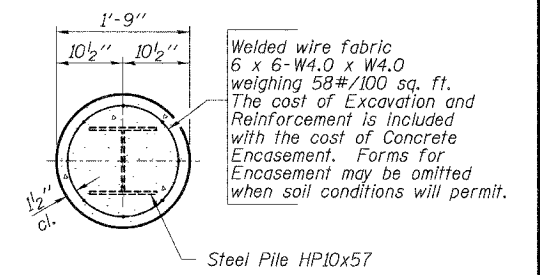
TYPICAL ANCHOR BOLT LOCATIONS
Note: Space reinforcement in cap to miss anchor bolts.



SECTION A-A

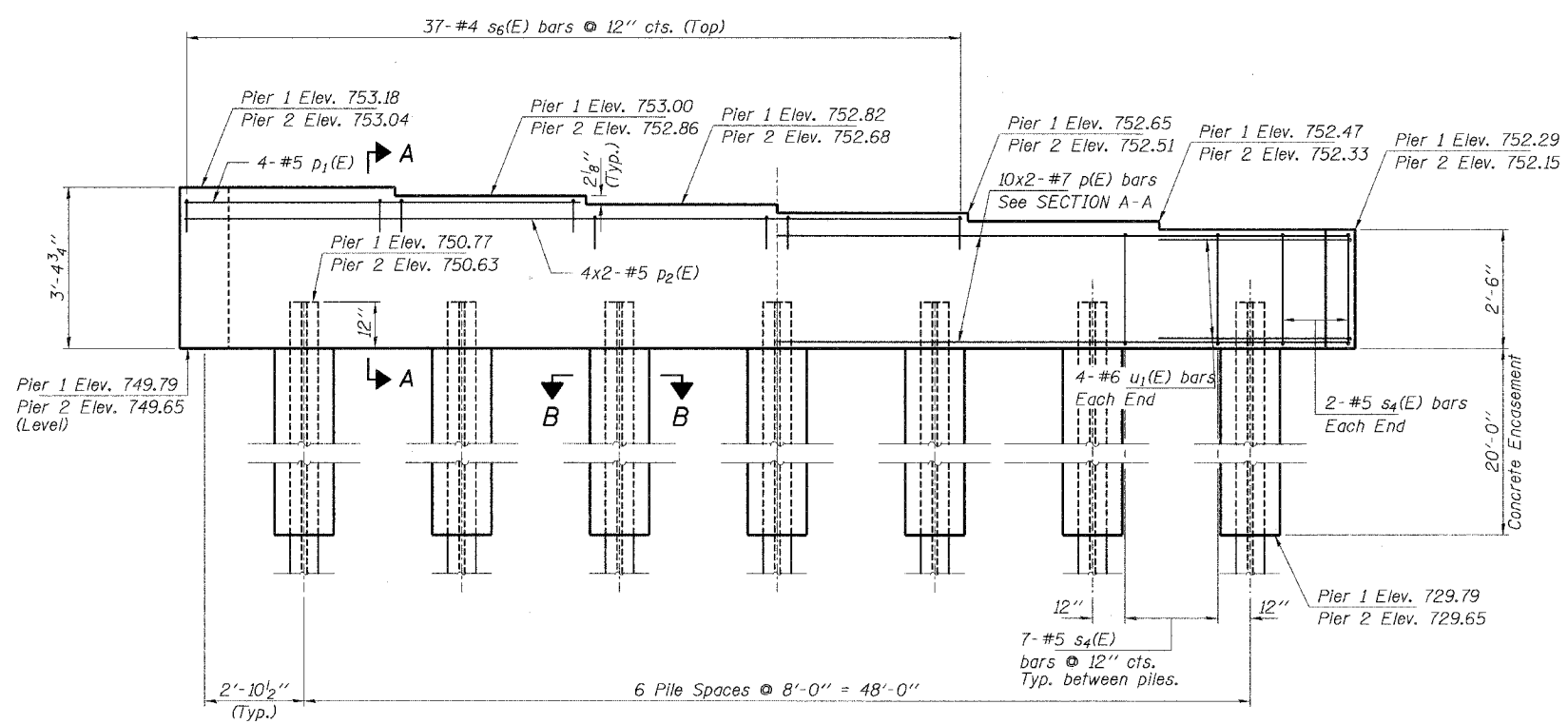


BAR u1(E)



SECTION B-B

PILE ENCASEMENT DETAIL



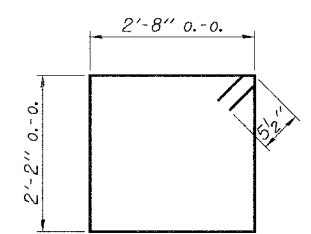
ELEVATION
(Looking South)

MIN. BAR LAPS
#5 = 2'-2"
#7 = 3'-5"

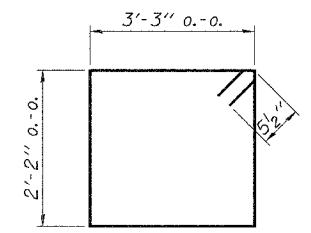
PILE DATA

Type _____ Steel HP10x57
No. Req'd. (2 Abut.) _____ *14
Capacity _____ 60 Tons/Pile
Estimated Lengths _____ 60 Ft/Pile

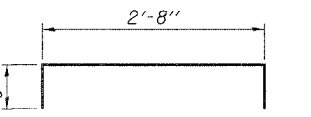
* Includes one steel test pile to be driven in a permanent location at Pier 1.



BAR s4(E)



BAR s5(E)



BAR s6(E)

BILL OF MATERIAL - BOTH PIERS

BAR	NO.	SIZE	LENGTH	SHAPE
p(E)	40	#7	28'-5"	—
p1(E)	8	#5	17'-1"	—
p2(E)	16	#5	19'-2"	—
s4(E)	92	#5	10'-7"	□
s5(E)	4	#5	11'-9"	□
s6(E)	74	#4	4'-2"	┌
u1(E)	16	#6	13'-2"	—
Concrete Structures			Cu. Yd.	35.2
Reinforcement Bars, Epoxy Coated			Pound	4,370
Steel Piles HP 10x57			Foot	780
Test Pile Steel HP 10x57			Each	1
Concrete Encasement			Cu. Yd.	25.0

Bars indicated thus 10x2-#7 etc. indicates 10 lines of bars with 2 lengths per line.
Reinforcement Bars designated (E) shall be epoxy coated.

ILR
Rice, Berry and Associates
A Division of Hampton,
Lenzini and Benwick, Inc.
Civil & Structural Engineers
3085 Stevenson Drive
Suite 201
Springfield, Illinois 62703
217-546-3400
P.O. Box 1036
DuQuoin, Illinois 62832
618-790-4637
Date: 11/15/05
DESIGNED: P.S.L. | CHECKED: S.W.M. | DRAWN: D.B.

PIERS
F.A.U. 6385 / C.H. 70 OVER SUGAR CREEK
SECTION 00-00182-01-BR
McLEAN COUNTY
STRUCTURE 057-5306 / STATION 820+21