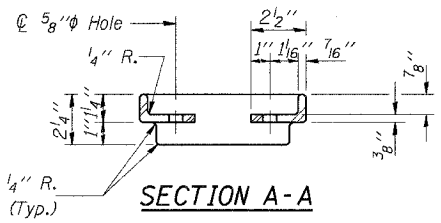
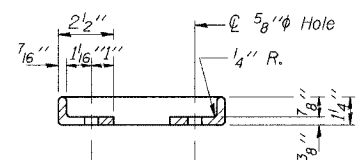


ROUTE NO.	SECTION	COUNTY	SHEET	SHEET
F.A.U. 6385	00-00182 -01-BR	McLEAN	33	31
FED. ROAD DIST. NO.		ILLINOIS	FED. AID PROJECT - 894-622743	

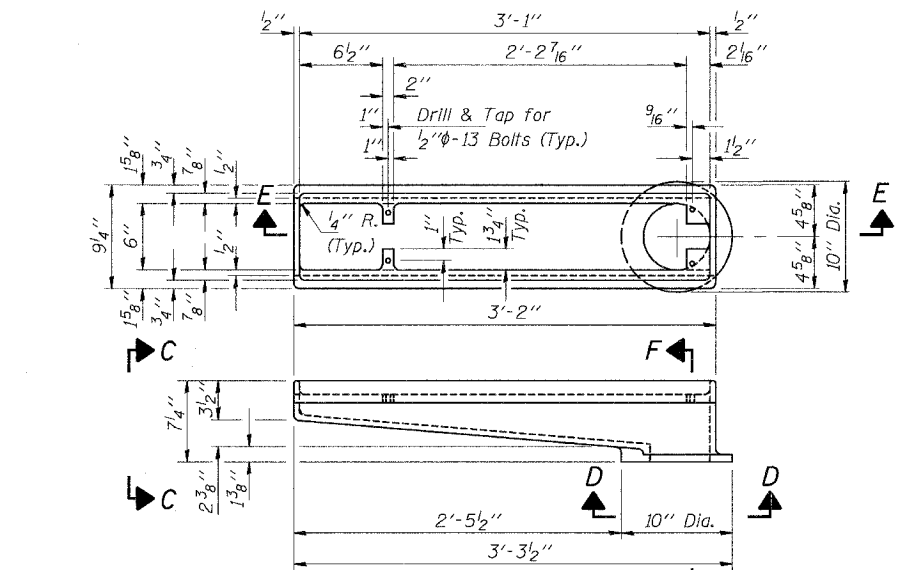
CONTRACT NO. 87269  
3'-1"



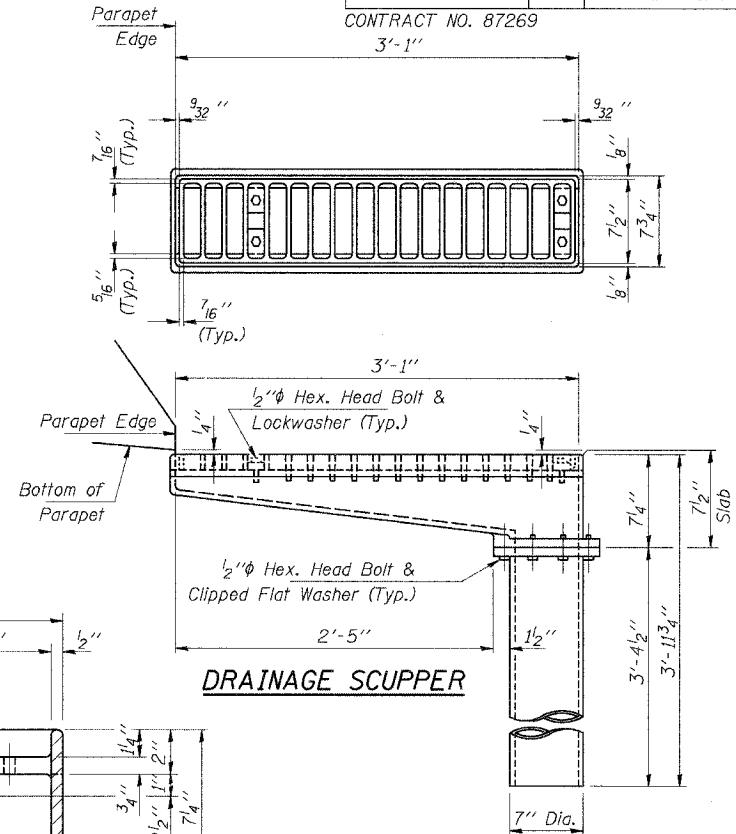
SECTION A-A



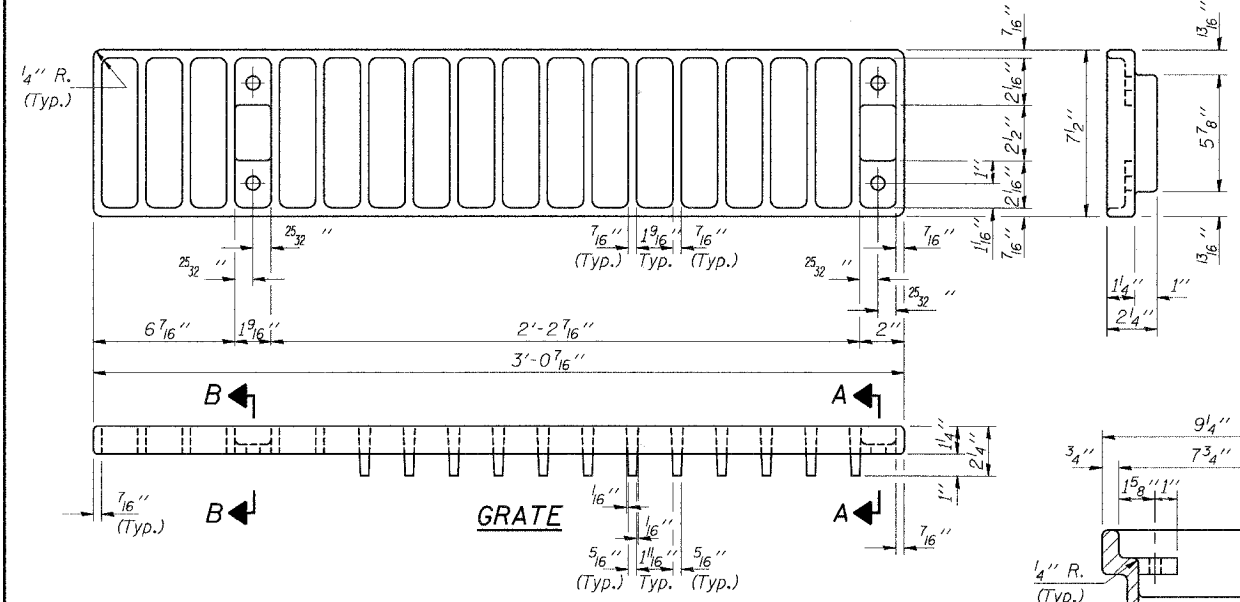
SECTION B-B



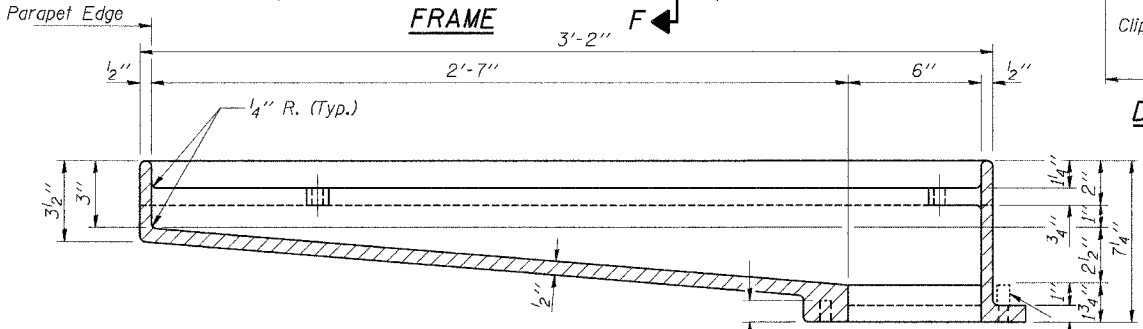
FRAME



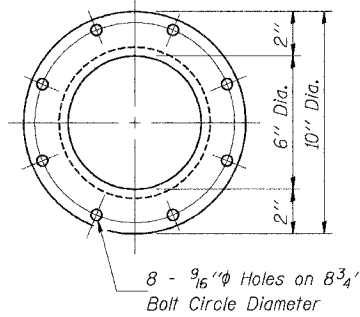
DRAINAGE SCUPPER



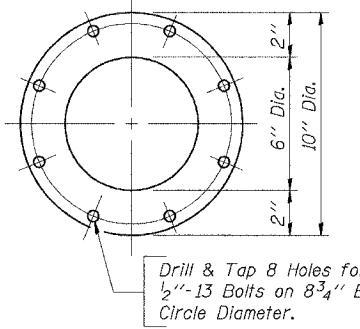
GRATE



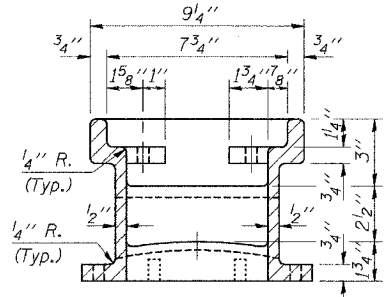
SECTION E-E



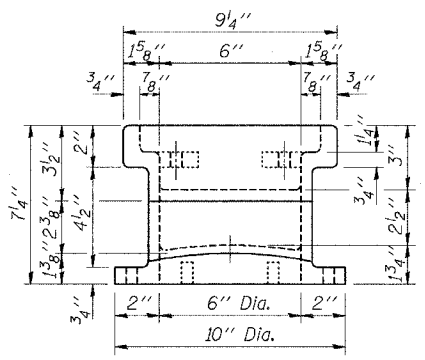
VIEW D-D



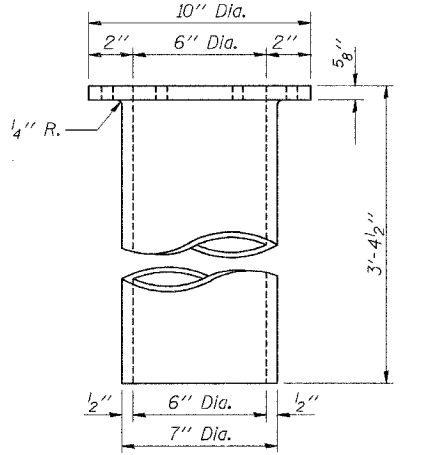
VIEW D-D



SECTION F-F



VIEW C-C



DOWNSPOUT

Notes: All cast iron parts shall be gray iron conforming to the requirements of AASHTO M105, Class 30.  
Bolts and washers shall conform to the requirements of ASTM A307.  
All bolts and washers shall be galvanized in accordance with AASHTO M232.  
As an alternate bolts and washers may be stainless steel conforming to the requirements of ASTM A193, Type 304.  
Cost of the Grate, Frame, Downspout, bolts and washers including complete installation of Scupper will be paid for at the unit bid price each for "DRAINAGE SCUPPERS."  
The Contractor may use at his option steel drainage scuppers or cast iron drainage scuppers.

**HLR**  
Rice, Berry and Associates  
A Division of Hampton, Lenzini and Renwick, Inc.  
Civil & Structural Engineers  
3085 Stevenson Drive  
Suite 201  
Springfield, Illinois 62703  
217-546-3400  
P.O. Box 1036  
DuQuoin, Illinois 62832  
618-790-4637  
Date: 8/15/05  
DESIGNED: P.S.L. CHECKED: S.W.M. DRAWN: D.B.

(Sheet 2 of 2)  
**ALTERNATE - CAST IRON DRAINAGE SCUPPER**  
F.A.U. 6385 / C.H. 70 OVER SUGAR CREEK  
SECTION 00-00182-01-BR  
McLEAN COUNTY  
STRUCTURE 057-5306 / STATION 820+21