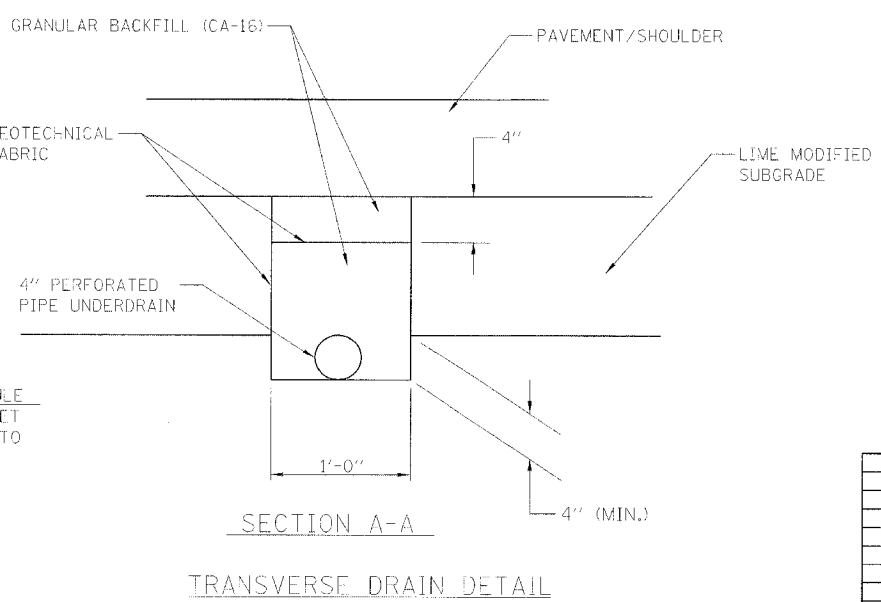
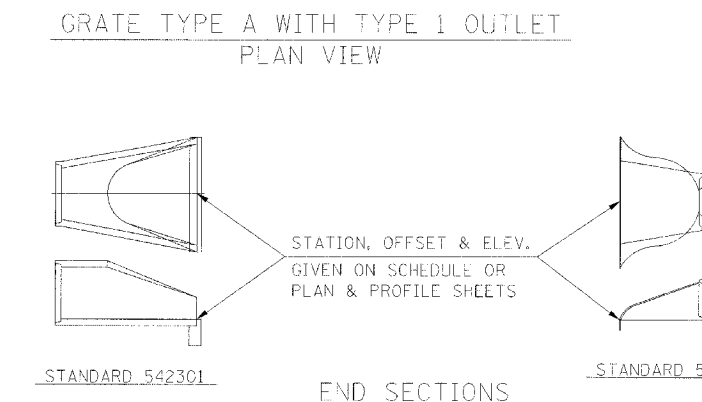
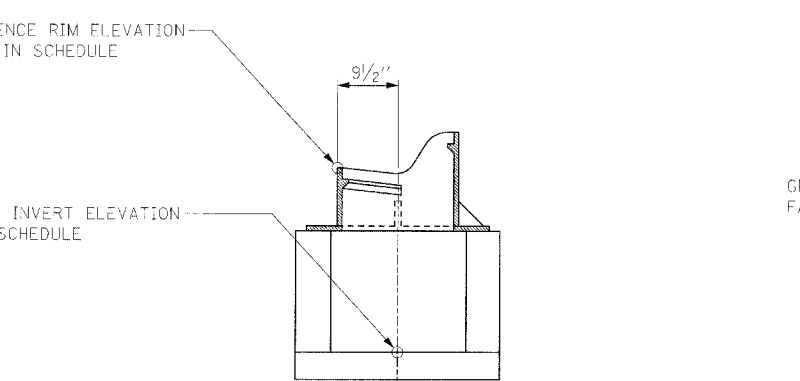
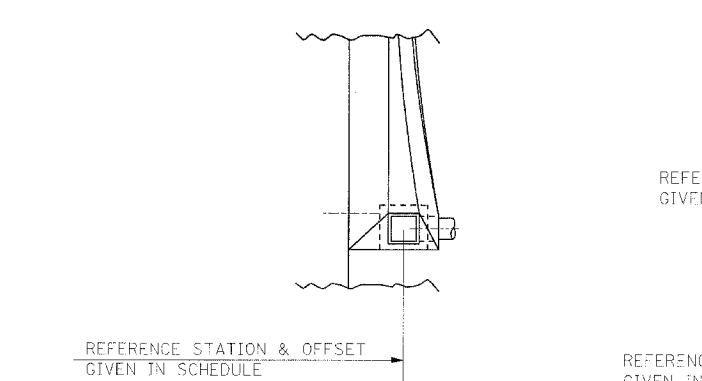
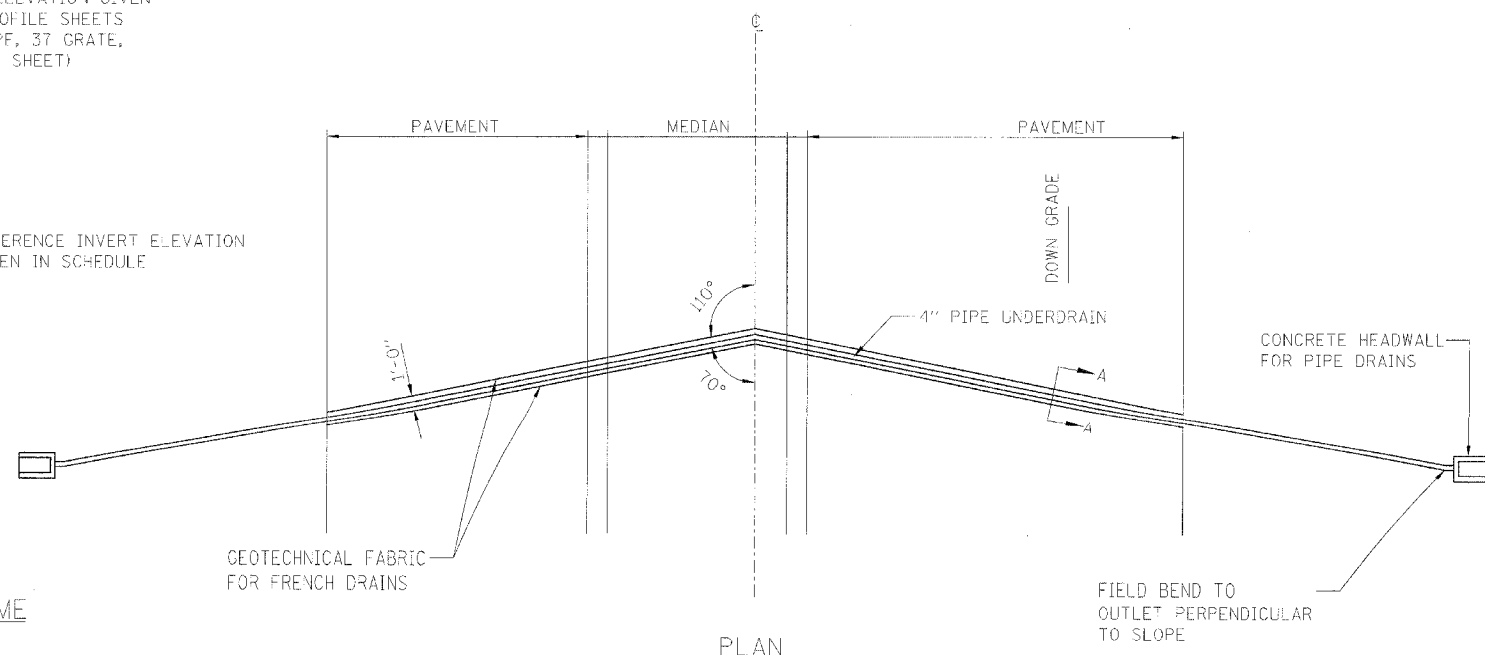
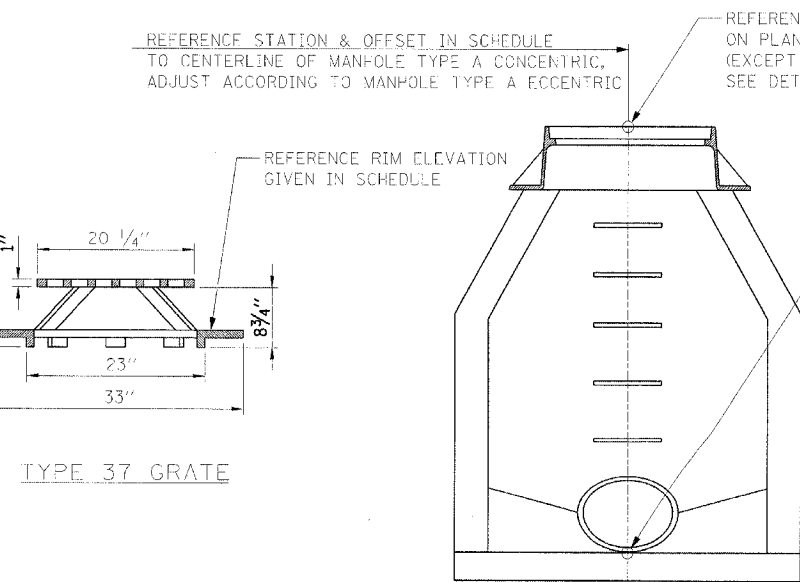
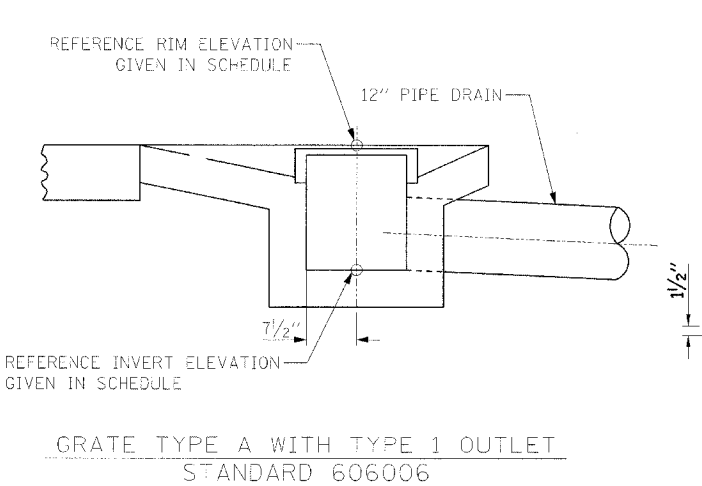
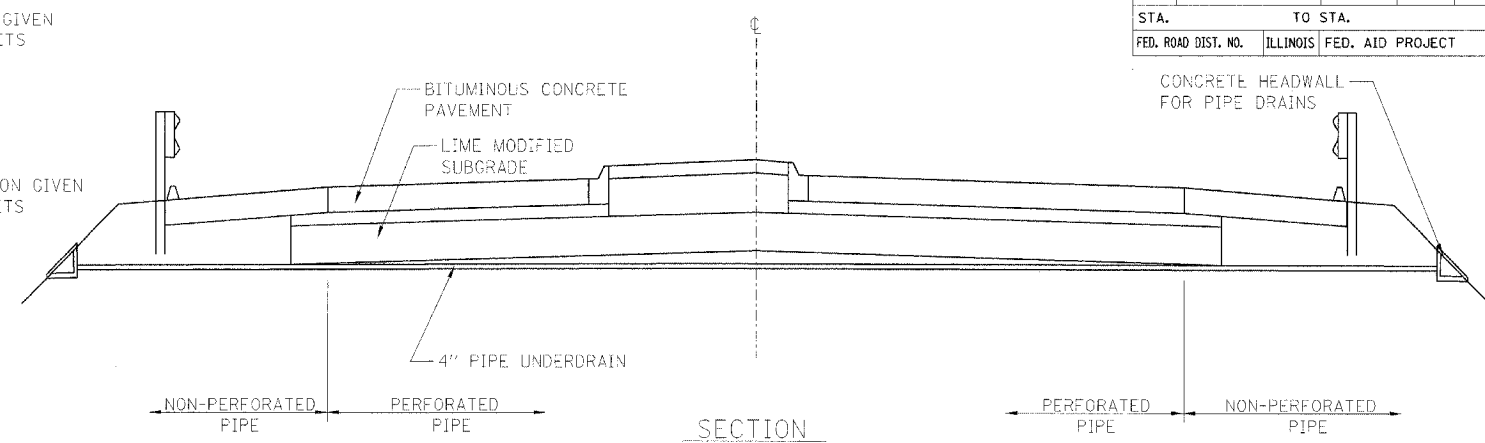
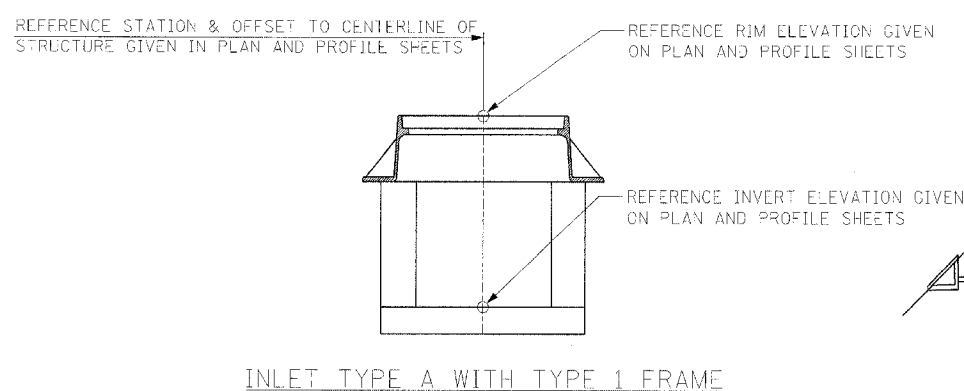
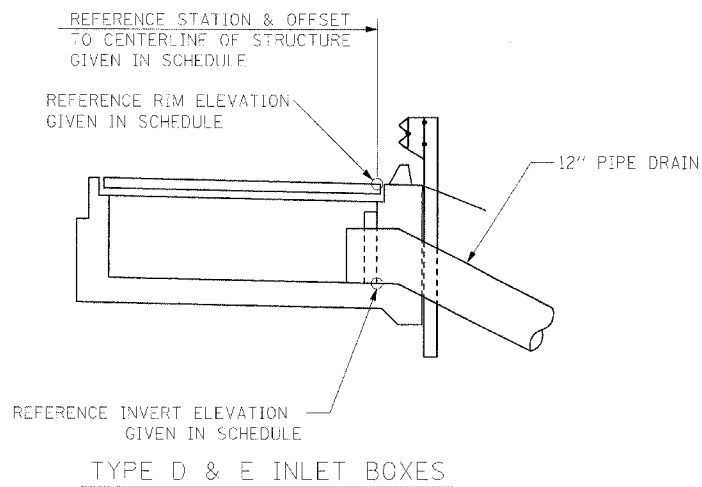


F.A.S. RTE.	SECTION	COUNTY	TOTAL SHEETS	SHEET NO.
642	99-00124-02-PV	COLES	229	26
STA.		TO STA.		
FED. ROAD DIST. NO.		ILLINOIS FED. AID PROJECT		



GENERAL NOTES

TRANSVERSE DRAIN MATERIALS AND CONSTRUCTION SHALL CONFORM TO SECTION 601 OF THE STANDARD SPECIFICATIONS EXCEPT THAT NO FABRIC ENVELOPE IS REQUIRED ON NON-PERFORATED PIPE AND THE GRANULAR BACKFILL GRADATION SHALL BE CA-16 GRAVEL.

GEOTECHNICAL FABRIC SHALL BE NON-WOVEN NEEDLE PUNCHED MATERIAL.

CONCRETE HEADWALL FOR PIPE DRAINS WILL BE PAID FOR SEPARATELY. ALL OTHER MATERIALS WILL NOT BE MEASURED SEPARATELY, BUT WILL BE INCLUDED IN THE COST PER UNIT TRANSVERSE DRAINS.

SKUEW TRANSVERSE DRAIN 20° FORWARD IN DIRECTION OF FLOW.

REVISIONS	
NAME	DATE

ILLINOIS DEPARTMENT OF TRANSPORTATION

DRAINAGE DETAILS

FAI-57, FAS 642

SEC NO. 15-23K, 99-00124-02-PV

COLES COUNTY, ILLINOIS

SCALE: NOT TO SCALE

DATE 07/13/2005

DRAWN BY MNM

CHECKED BY SKM

© Copyright Hanson Professional Services Inc. 2005
HANSON
 07/13/2005
 IN ST 10655 97420289NCHN/Sheet C-603_02.rvt.mdp
 SKM 12/26/03
 MNM 12/26/03
 JWR 10/09/04