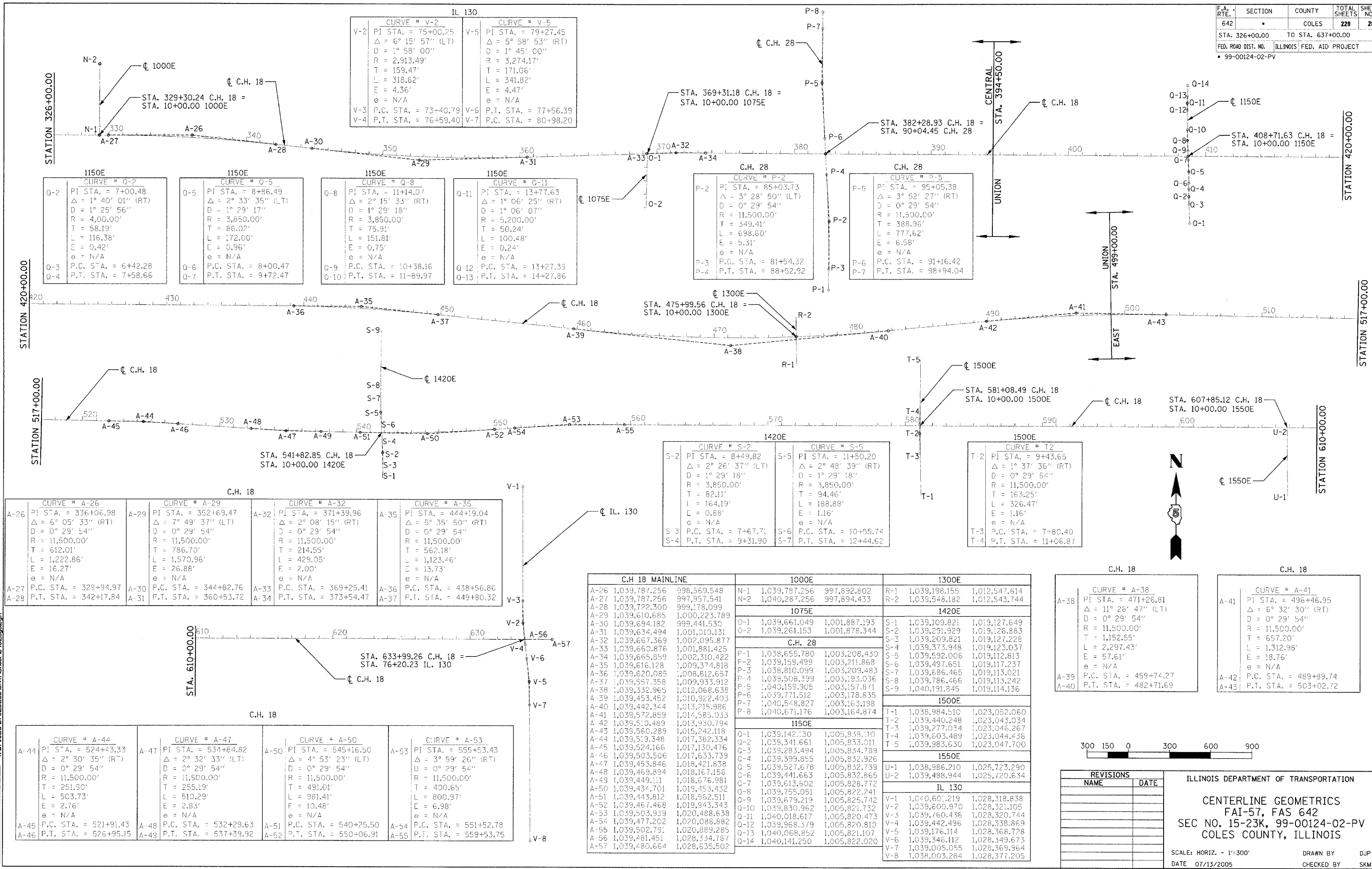


F.A. RTE.	SECTION	COUNTY	TOTAL SHEETS	SHEET NO.
642		COLES	228	28
STA. 326+00.00		TO STA. 637+00.00		
FED. ROAD DIST. NO.		ILLINOIS FED. AID PROJECT		
99-00124-02-PV				



07/13/2005
 1:57:05:59:52026b/Civil/Sheet C-102.dwg
 LAYOUT: DJF 12/26/03
 DRAWN: DJF 12/26/03
 REVIEWED: SKM 01/05/04



CURVE # V-2		CURVE # V-5	
V-2	PI STA. = 75+00.25 Δ = 6° 15' 57" (LT) D = 1° 58' 00" R = 2,913.49' T = 159.47' L = 318.62' E = 4.36' e = N/A	V-5	PI STA. = 79+27.45 Δ = 5° 58' 53" (RT) D = 1° 45' 00" R = 3,274.17' T = 171.06' L = 341.82' E = 4.47' e = N/A
V-3	P.C. STA. = 73+40.79	V-6	P.T. STA. = 77+56.39
V-4	P.T. STA. = 76+59.40	V-7	P.C. STA. = 80+98.20

1150E CURVE # Q-2		1150E CURVE # Q-5		1150E CURVE # Q-8		1150E CURVE # Q-11	
Q-2	PI STA. = 7+00.48 Δ = 1° 40' 01" (RT) D = 1° 25' 56" R = 4,000.00' T = 58.19' L = 116.38' E = 0.42' e = N/A	Q-5	PI STA. = 8+86.49 Δ = 2° 33' 35" (LT) D = 1° 29' 17" R = 3,850.00' T = 86.07' L = 172.00' E = 0.96' e = N/A	Q-8	PI STA. = 11+14.07 Δ = 2° 15' 33" (RT) D = 1° 29' 18" R = 3,850.00' T = 75.91' L = 151.81' E = 0.75' e = N/A	Q-11	PI STA. = 13+77.63 Δ = 1° 06' 25" (RT) D = 1° 06' 07" R = 5,200.00' T = 50.24' L = 100.48' E = 0.24' e = N/A
Q-3	P.C. STA. = 6+42.28	Q-6	P.C. STA. = 8+00.47	Q-9	P.C. STA. = 10+38.16	Q-12	P.C. STA. = 13+27.39
Q-4	P.T. STA. = 7+58.66	Q-7	P.T. STA. = 9+72.47	Q-10	P.T. STA. = 11-89.97	Q-13	P.T. STA. = 14+27.86

C.H. 28 CURVE # P-2		C.H. 28 CURVE # P-5	
P-2	PI STA. = 85+03.73 Δ = 3° 28' 50" (LT) D = 0° 29' 54" R = 11,500.00' T = 349.41' L = 698.60' E = 5.31' e = N/A	P-5	PI STA. = 95+05.38 Δ = 3° 52' 27" (RT) D = 0° 29' 54" R = 11,500.00' T = 388.96' L = 777.62' E = 6.58' e = N/A
P-3	P.C. STA. = 81+54.32	P-6	P.C. STA. = 91+16.42
P-4	P.T. STA. = 88+52.92	P-7	P.T. STA. = 98+94.04

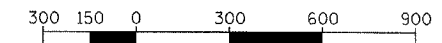
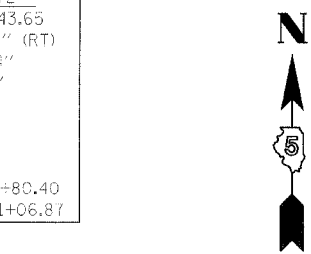
1420E CURVE # S-2		1420E CURVE # S-5	
S-2	PI STA. = 8+49.82 Δ = 2° 26' 37" (LT) D = 1° 29' 18" R = 3,850.00' T = 82.11' L = 164.19' E = 0.88' e = N/A	S-5	PI STA. = 11+50.20 Δ = 2° 48' 39" (RT) D = 1° 29' 18" R = 3,850.00' T = 94.46' L = 188.88' E = 1.16' e = N/A
S-3	P.C. STA. = 7+67.71	S-6	P.C. STA. = 10+55.74
S-4	P.T. STA. = 9+31.90	S-7	P.T. STA. = 12+44.62

1500E CURVE # T-2	
T-2	PI STA. = 9+43.65 Δ = 1° 37' 36" (RT) D = 0° 29' 54" R = 11,500.00' T = 163.25' L = 326.47' E = 1.16' e = N/A
T-3	P.C. STA. = 7+80.40
T-4	P.T. STA. = 11+06.87

C.H. 18 CURVE # A-26		C.H. 18 CURVE # A-29		C.H. 18 CURVE # A-32		C.H. 18 CURVE # A-35	
A-26	PI STA. = 336+06.98 Δ = 6° 05' 33" (RT) D = 0° 29' 54" R = 11,500.00' T = 612.01' L = 1,222.86' E = 16.27' e = N/A	A-29	PI STA. = 352+69.47 Δ = 7° 49' 37" (LT) D = 0° 29' 54" R = 11,500.00' T = 786.70' L = 1,570.96' E = 26.88' e = N/A	A-32	PI STA. = 371+39.96 Δ = 2° 08' 15" (RT) D = 0° 29' 54" R = 11,500.00' T = 214.55' L = 429.05' E = 2.00' e = N/A	A-35	PI STA. = 444+19.04 Δ = 5° 35' 50" (RT) D = 0° 29' 54" R = 11,500.00' T = 562.18' L = 1,123.46' E = 13.73' e = N/A
A-27	P.C. STA. = 329+94.97	A-30	P.C. STA. = 344+82.76	A-33	P.C. STA. = 369+25.41	A-36	P.C. STA. = 438+56.86
A-28	P.T. STA. = 342+17.84	A-31	P.T. STA. = 360+53.72	A-34	P.T. STA. = 373+54.47	A-37	P.T. STA. = 449+80.32

C.H. 18 MAINLINE		1000E		1300E	
A-26	1,039,787.256	N-1	1,039,787.256	R-1	1,039,198.155
A-27	1,039,787.256	N-2	1,040,287.256	R-2	1,039,548.182
A-28	1,039,722.300	1075E		1420E	
A-29	1,039,610.685	O-1	1,039,661.049	S-1	1,039,109.821
A-30	1,039,694.182	O-2	1,039,261.153	S-2	1,039,291.929
A-31	1,039,634.494	C.H. 28		S-3	1,039,209.821
A-32	1,039,667.369	P-1	1,038,655.780	S-4	1,039,373.948
A-33	1,039,660.876	P-2	1,039,159.499	S-5	1,039,592.006
A-34	1,039,665.859	P-3	1,038,810.099	S-6	1,039,497.651
A-35	1,039,616.128	P-4	1,039,508.399	S-7	1,039,686.465
A-36	1,039,620.085	P-5	1,040,159.905	S-8	1,039,786.466
A-37	1,039,557.358	P-6	1,039,771.512	S-9	1,040,191.845
A-38	1,039,332.965	P-7	1,040,548.827	1500E	
A-39	1,039,453.452	P-8	1,040,671.176	T-1	1,038,984.510
A-40	1,039,442.344	1150E		T-2	1,039,440.248
A-41	1,039,572.859	O-1	1,039,142.300	T-3	1,039,277.034
A-42	1,039,510.489	O-2	1,039,341.661	T-4	1,039,603.489
A-43	1,039,560.289	O-3	1,039,283.494	T-5	1,039,983.630
A-44	1,039,519.348	O-4	1,039,399.855	1550E	
A-45	1,039,524.166	O-5	1,039,527.678	U-1	1,038,986.210
A-46	1,039,503.506	O-6	1,039,441.663	U-2	1,039,488.944
A-47	1,039,453.846	O-7	1,039,613.602	IL 130	
A-48	1,039,469.894	O-8	1,039,755.051	V-1	1,040,601.219
A-49	1,039,449.111	O-9	1,039,679.219	V-2	1,039,600.970
A-50	1,039,434.701	O-10	1,039,830.962	V-3	1,039,760.436
A-51	1,039,443.812	O-11	1,040,018.617	V-4	1,039,442.496
A-52	1,039,467.468	O-12	1,039,968.379	V-5	1,039,176.114
A-53	1,039,503.939	O-13	1,040,068.852	V-6	1,039,346.112
A-54	1,039,477.202	O-14	1,040,141.250	V-7	1,039,005.055
A-55	1,039,502.791			V-8	1,038,003.284
A-56	1,039,481.451				
A-57	1,039,480.664				

C.H. 18 CURVE # A-44		C.H. 18 CURVE # A-47		C.H. 18 CURVE # A-50		C.H. 18 CURVE # A-53	
A-44	PI STA. = 524+43.33 Δ = 2° 30' 35" (RT) D = 0° 29' 54" R = 11,500.00' T = 251.90' L = 503.73' E = 2.76' e = N/A	A-47	PI STA. = 534+84.82 Δ = 2° 32' 33" (LT) D = 0° 29' 54" R = 11,500.00' T = 255.19' L = 510.29' E = 2.83' e = N/A	A-50	PI STA. = 545+16.50 Δ = 4° 53' 23" (LT) D = 0° 29' 54" R = 11,500.00' T = 491.01' L = 981.41' E = 10.48' e = N/A	A-53	PI STA. = 555+53.43 Δ = 3° 59' 26" (RT) D = 0° 29' 54" R = 11,500.00' T = 400.65' L = 800.97' E = 6.98' e = N/A
A-45	P.C. STA. = 521+91.43	A-48	P.C. STA. = 532+29.63	A-51	P.C. STA. = 540+25.50	A-54	P.C. STA. = 551+52.78
A-46	P.T. STA. = 526+95.15	A-49	P.T. STA. = 537+39.92	A-52	P.T. STA. = 550+06.91	A-55	P.T. STA. = 559+53.75



REVISIONS	
NAME	DATE

ILLINOIS DEPARTMENT OF TRANSPORTATION

CENTERLINE GEOMETRICS
 FAI-57, FAS 642
 SEC NO. 15-23K, 99-00124-02-PV
 COLES COUNTY, ILLINOIS

SCALE: HORIZ. - 1"=300'
 DATE 07/13/2005

DRAWN BY DJP
 CHECKED BY SKM