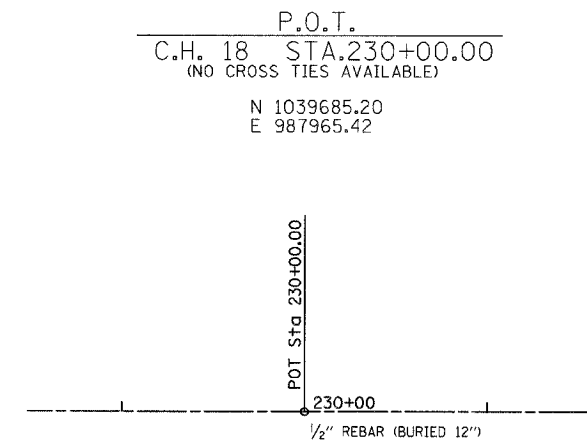
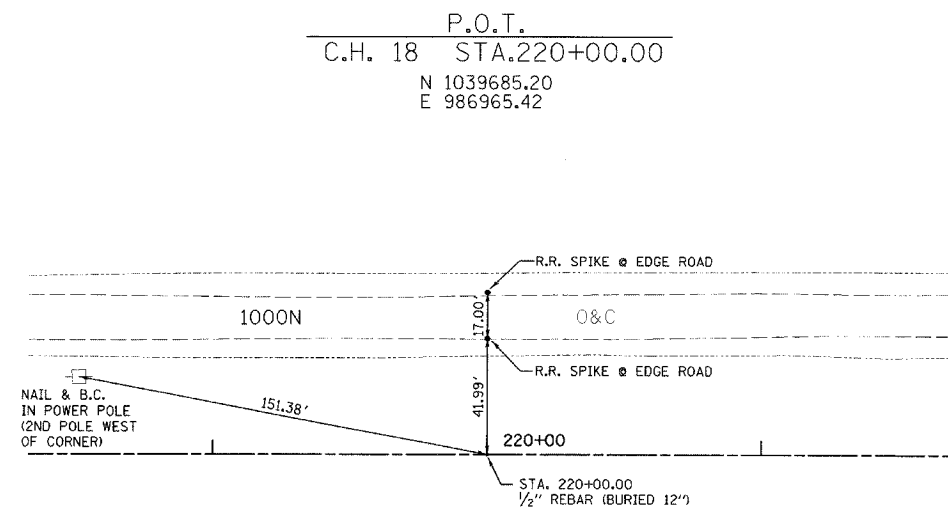
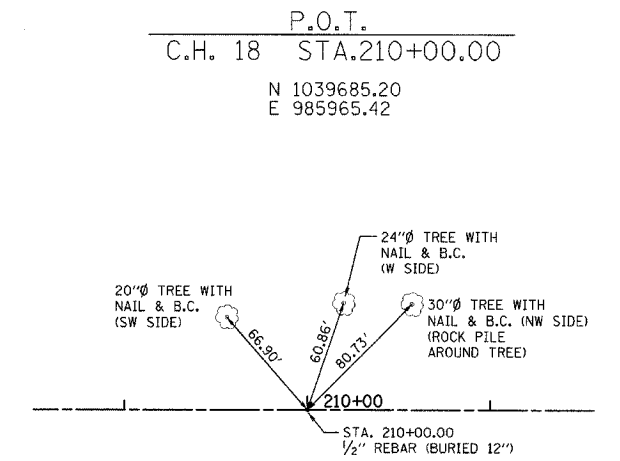
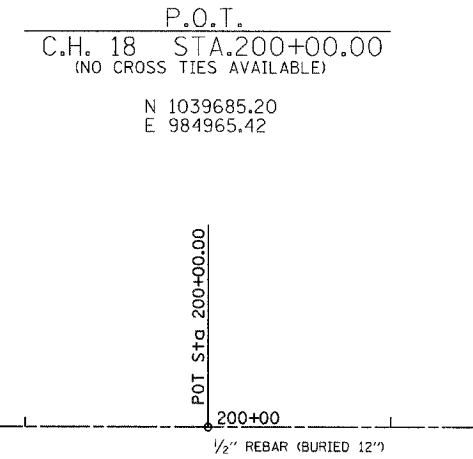
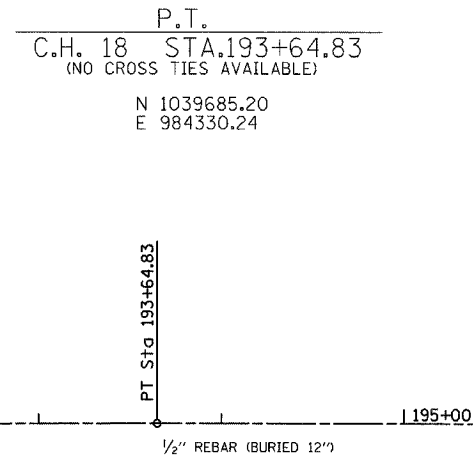
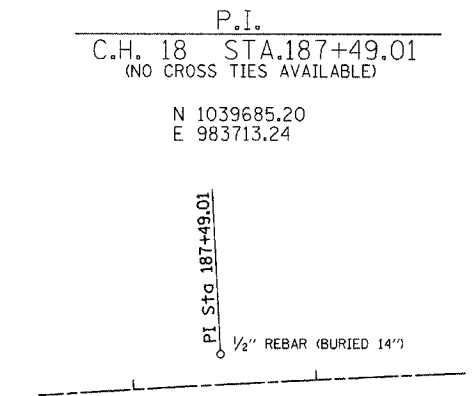
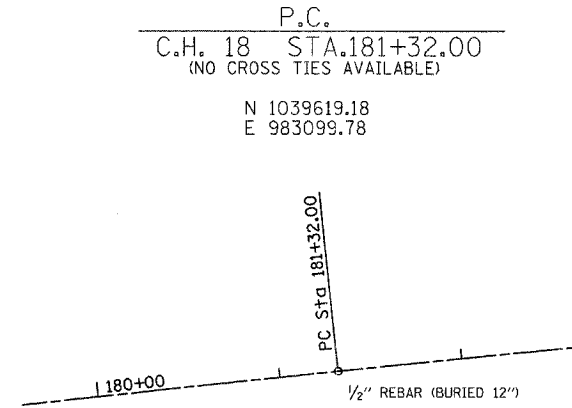
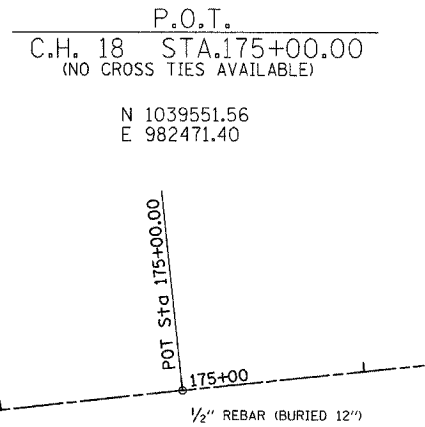


F.A.S. RTE.	SECTION	COUNTY	TOTAL SHEETS	SHEET NO.
642	99-00124-02-PV	COLES	229	29
STA.		TO STA.		
FED. ROAD DIST. NO.		ILLINOIS FED. AID PROJECT		



REVISIONS	
NAME	DATE

ILLINOIS DEPARTMENT OF TRANSPORTATION

SURVEY TIES
FAI-57, FAS 642
SEC NO. 15-23K, 99-00124-02-PV
COLES COUNTY, ILLINOIS

SCALE: VERT.
HORIZ.
DATE 07/13/2005

DRAWN BY
CHECKED BY MED

TUG PROJ. 1391022-5
FILE ADDRESS