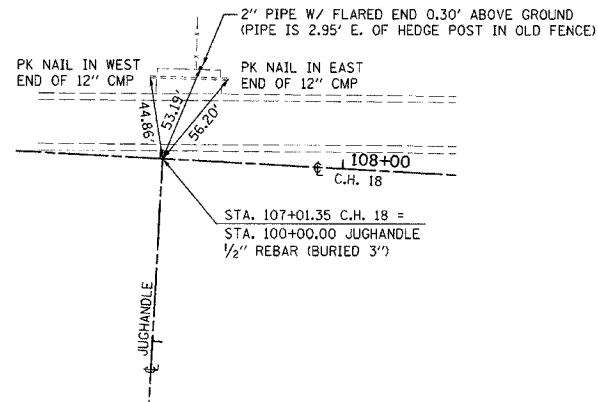
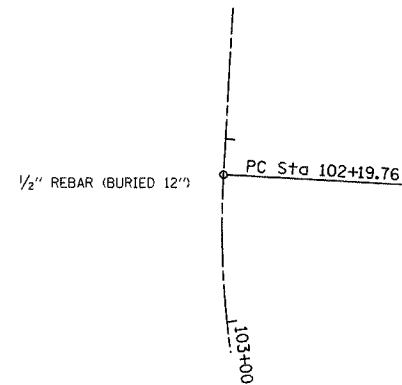


F.A.S. RTE.	SECTION	COUNTY	TOTAL SHEETS	SHEET NO.
642	99-00124-02-PV	COLES	229	31
STA.		TO STA.		
FED. ROAD DIST. NO.		ILLINOIS FED. AID PROJECT		

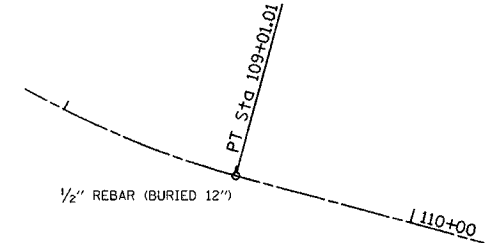
P.O.T.
JUGHANDLE STA.100+00.00
N 1039364.58
E 975681.04



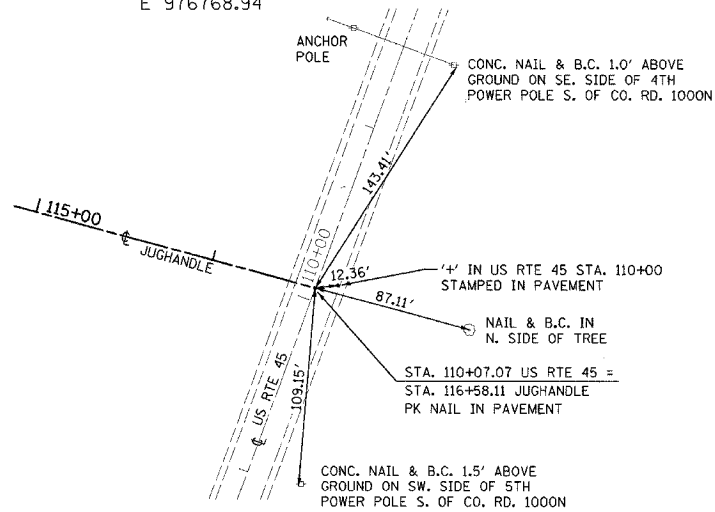
P.C.
JUGHANDLE STA.102+19.76
(NO CROSS TIES AVAILABLE)
N 1039145.16
E 975668.93



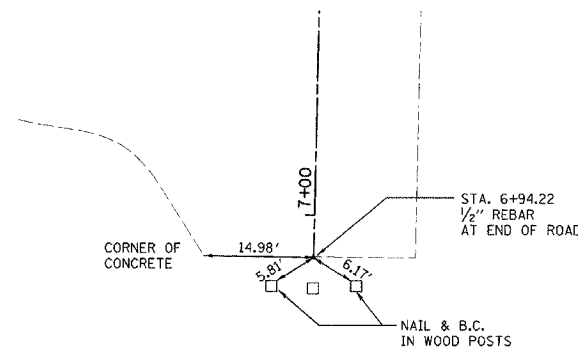
P.T.
JUGHANDLE STA.109+01.01
(NO CROSS TIES AVAILABLE)
N 1038634.84
E 976037.96



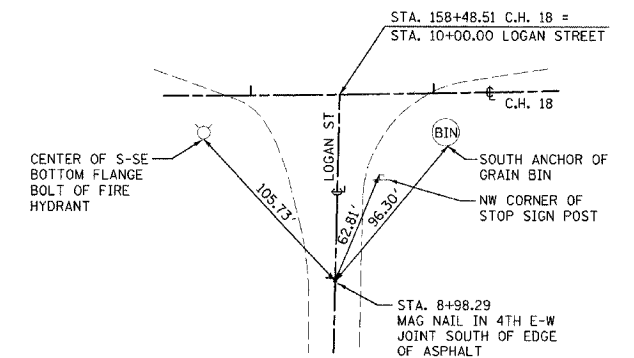
P.O.T.
JUGHANDLE STA.116+58.11
N 1038437.68
E 976768.94



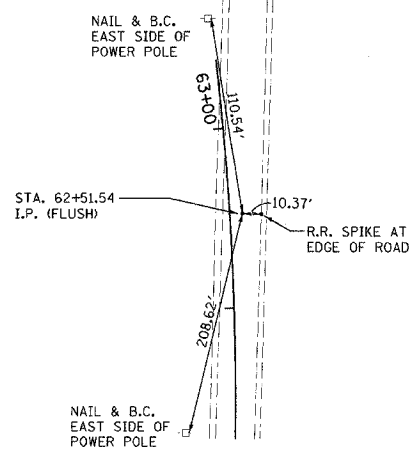
P.O.T.
LOGAN ST. STA.6+94.22
N 1039120.08
E 980819.06



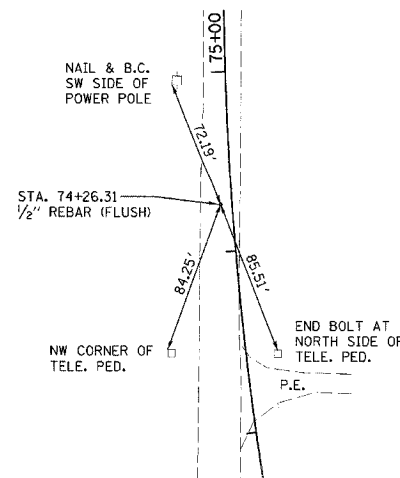
P.O.T.
LOGAN ST. STA.8+98.29
N 1039324.10
E 980823.38



P.I.
CO. RD. 700E STA.62+51.54
N 1038714.27
E 982172.17



P.I.
CO. RD. 700E STA.74+26.31
N 1039875.75
E 981990.43



REVISIONS	
NAME	DATE

ILLINOIS DEPARTMENT OF TRANSPORTATION

SURVEY TIES
FAI-57, FAS 642
SEC NO. 15-23K, 99-00124-02-PV
COLES COUNTY, ILLINOIS

SCALE: VERT. N.T.S. DRAWN BY
 HORIZ. CHECKED BY MED
DATE 07/13/2005

TUG PROJ. #1997022-5
BFILE ABBREV'S