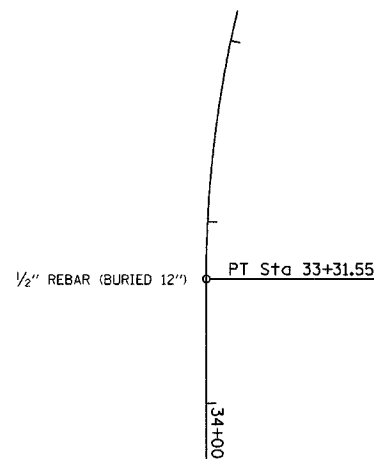


F.A.S. RTE.	SECTION	COUNTY	TOTAL SHEETS	SHEET NO.
642	99-00124-02-PV	COLES	229	34
STA.		TO STA.		
FED. ROAD DIST. NO.		ILLINOIS FED. AID PROJECT		

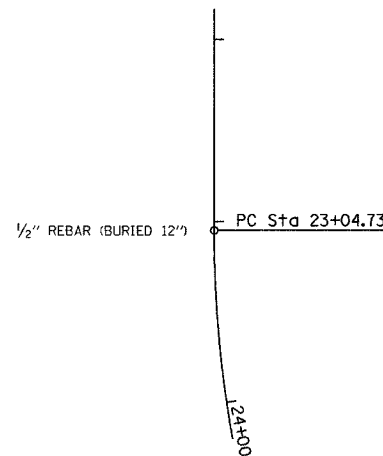
P.T.  
RAMP 'A' STA.33+31.55  
(NO CROSS TIES AVAILABLE)

N 1039944.75  
E 989086.43



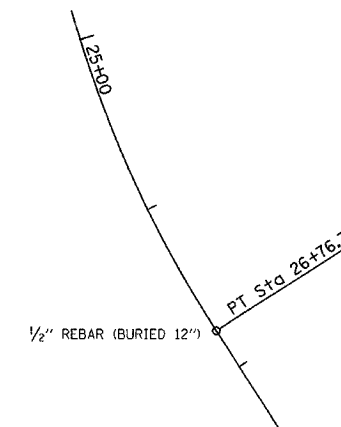
P.C.  
RAMP 'B' STA.23+04.73

N 1039380.47  
E 989086.43



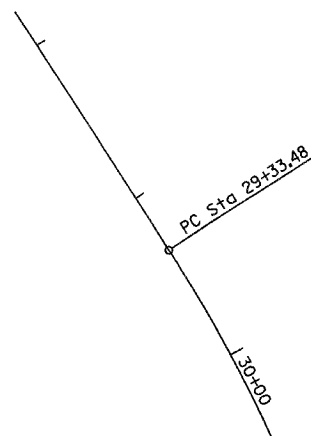
P.T.  
RAMP 'B' STA.26+76.73  
(NO CROSS TIES AVAILABLE)

N 1039028.45  
E 989190.01



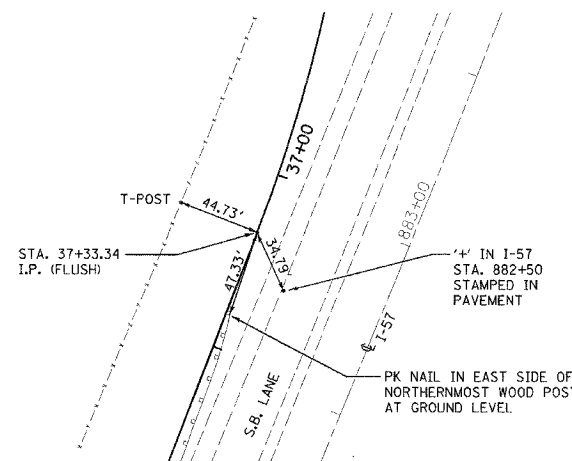
P.C.  
RAMP 'B' STA.29+33.48  
(NO CROSS TIES AVAILABLE)

N 1038812.61  
E 989329.06



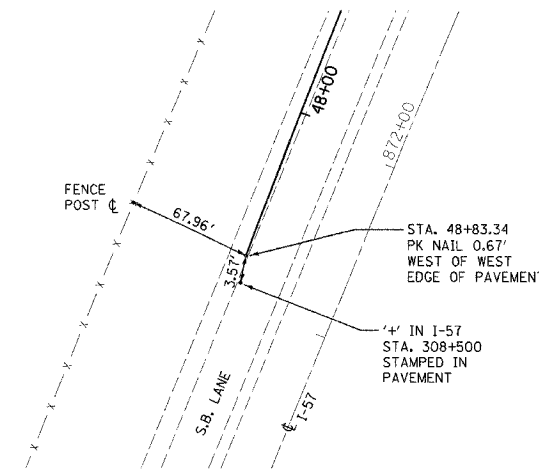
P.T.  
RAMP 'B' STA.37+33.34

N 1038045.92  
E 989407.37



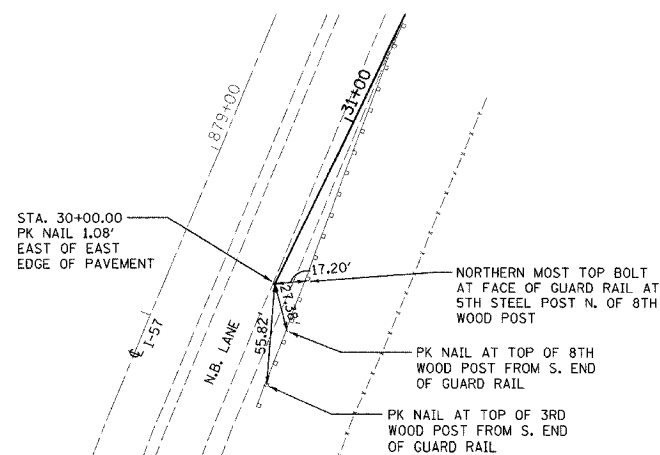
P.O.T.  
RAMP 'B' STA.48+83.34

N 1036973.21  
E 988992.89



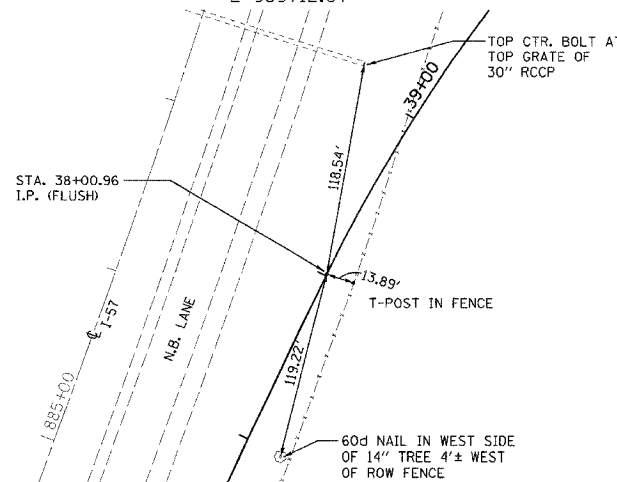
P.O.T.  
RAMP 'C' STA.30+00.00

N 1037593.62  
E 989369.46



P.C.  
RAMP 'C' STA.38+00.96

N 1038317.60  
E 989712.07



REVISIONS	
NAME	DATE

ILLINOIS DEPARTMENT OF TRANSPORTATION  
  
SURVEY TIES  
FAI-57, FAS 642  
SEC NO. 15-23K, 99-00124-02-PV  
COLES COUNTY, ILLINOIS  
  
SCALE: VERT. N.T.S. DRAWN BY  
HORIZ. DATE 07/13/2005 CHECKED BY MED

TUG PROJ. #1997022-5  
BFILE ABBREVS