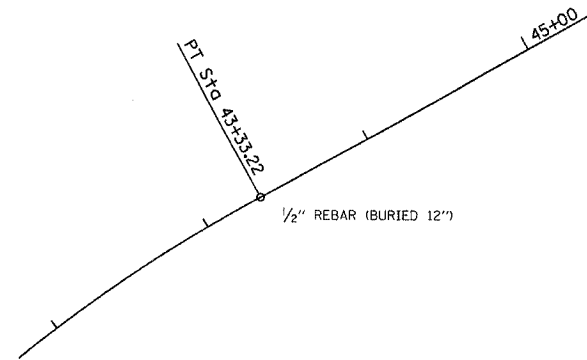
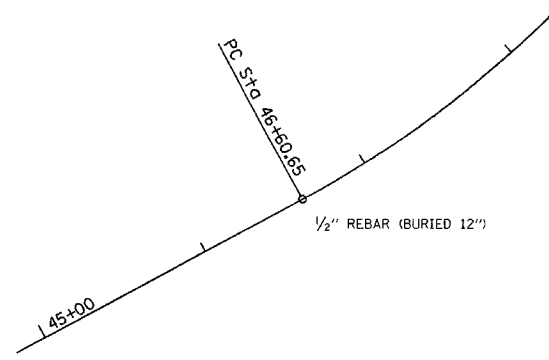


F.A.S. RTE.	SECTION	COUNTY	TOTAL SHEETS	SHEET NO.
642	99-00124-02-PV	COLES	229	35
STA.		TO STA.		
FED. ROAD DIST. NO.		ILLINOIS FED. AID PROJECT		

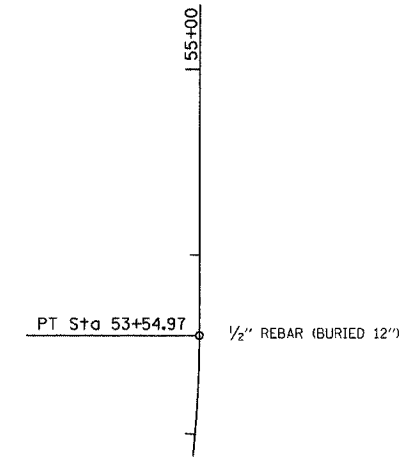
P.T.
RAMP 'C' STA.43+33.22
(NO CROSS TIES AVAILABLE)
N 1038698.90
E 990070.92



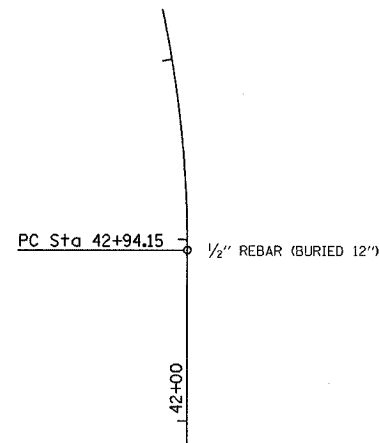
P.C.
RAMP 'C' STA.46+60.65
(NO CROSS TIES AVAILABLE)
N 1038856.62
E 990357.86



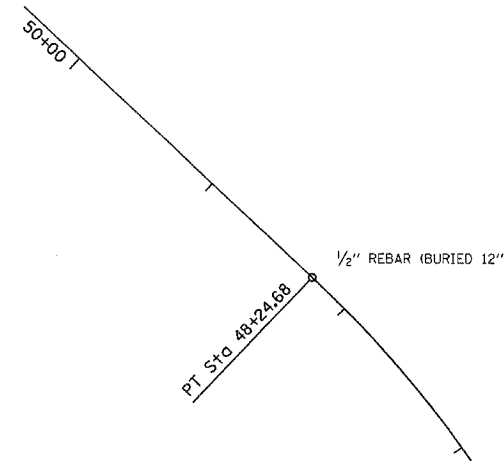
P.T.
RAMP 'C' STA.53+54.97
(NO CROSS TIES AVAILABLE)
N 1039426.24
E 990694.75



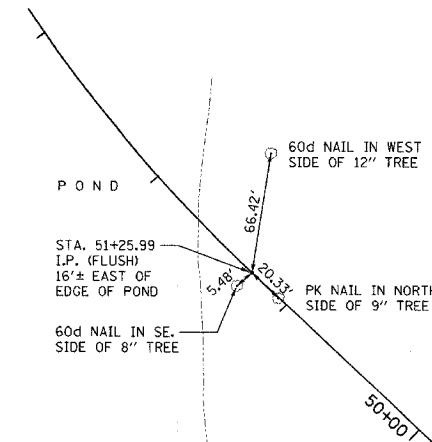
P.C.
RAMP 'D' STA.42+94.15
(NO CROSS TIES AVAILABLE)
N 1039979.35
E 990694.75



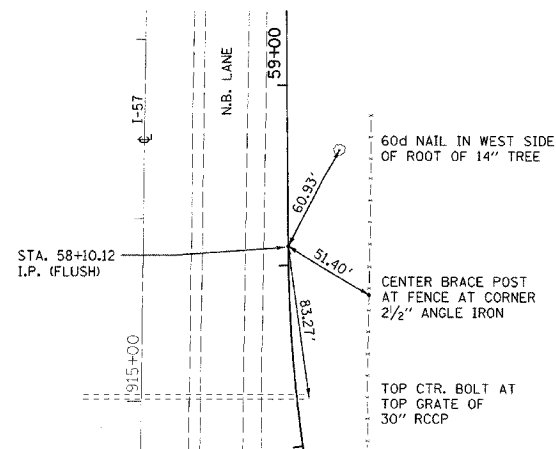
P.T.
RAMP 'D' STA.48+24.68
(NO CROSS TIES AVAILABLE)
N 1040452.90
E 990490.00



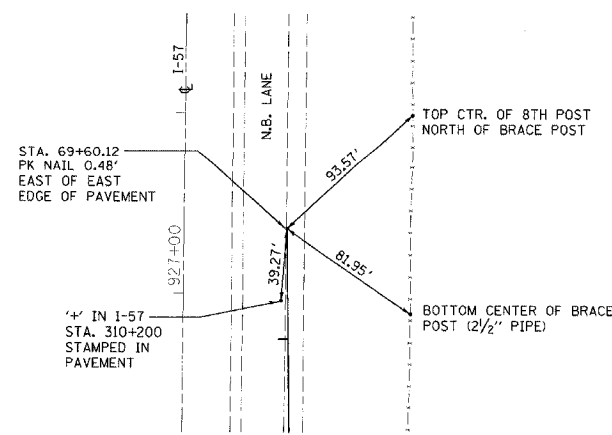
P.C.
RAMP 'D' STA.51+25.99
N 1040659.31
E 990270.48



P.T.
RAMP 'D' STA.58+10.12
N 1041268.93
E 990002.78



P.O.T.
RAMP 'D' STA.69+60.12
N 1042418.86
E 989989.76



REVISIONS	
NAME	DATE

ILLINOIS DEPARTMENT OF TRANSPORTATION
SURVEY TIES
FAI-57, FAS 642
SEC NO. 15-23K, 99-00124-02-PV
COLES COUNTY, ILLINOIS
SCALE: VERT. N.T.S. DRAWN BY
HORIZ. DATE 07/13/2005 CHECKED BY MED

TUG PROJ. 11/917022-5
FILE ABBREV