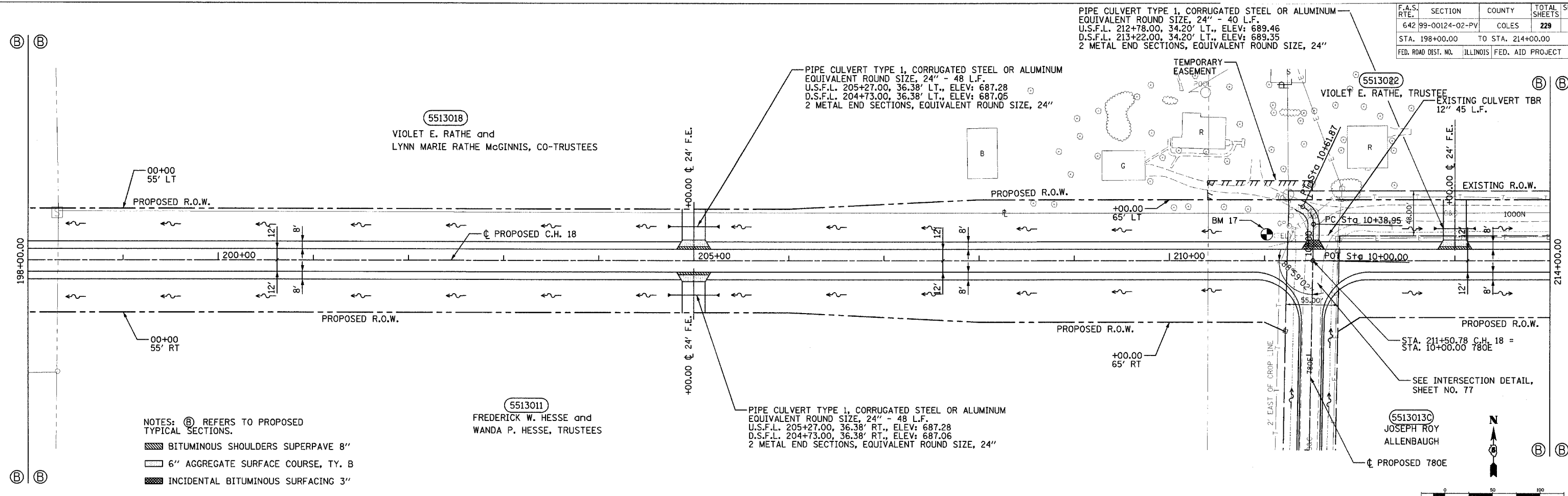


F.A.S. RTE.	SECTION	COUNTY	TOTAL SHEETS	SHEET NO.
642	99-00124-02-PV	COLES	229	39
STA. 198+00.00		TO STA. 214+00.00		
FED. ROAD DIST. NO.		ILLINOIS FED. AID PROJECT		

PIPE CULVERT TYPE 1, CORRUGATED STEEL OR ALUMINUM
EQUIVALENT ROUND SIZE, 24" - 40 L.F.
U.S.F.L. 212+78.00, 34.20' LT., ELEV: 689.46
D.S.F.L. 213+22.00, 34.20' LT., ELEV: 689.35
2 METAL END SECTIONS, EQUIVALENT ROUND SIZE, 24"

PIPE CULVERT TYPE 1, CORRUGATED STEEL OR ALUMINUM
EQUIVALENT ROUND SIZE, 24" - 48 L.F.
U.S.F.L. 205+27.00, 36.38' LT., ELEV: 687.28
D.S.F.L. 204+73.00, 36.38' LT., ELEV: 687.05
2 METAL END SECTIONS, EQUIVALENT ROUND SIZE, 24"

PIPE CULVERT TYPE 1, CORRUGATED STEEL OR ALUMINUM
EQUIVALENT ROUND SIZE, 24" - 48 L.F.
U.S.F.L. 205+27.00, 36.38' RT., ELEV: 687.28
D.S.F.L. 204+73.00, 36.38' RT., ELEV: 687.06
2 METAL END SECTIONS, EQUIVALENT ROUND SIZE, 24"



- NOTES: (B) REFERS TO PROPOSED TYPICAL SECTIONS.
- BITUMINOUS SHOULDERS SUPERPAVE 8"
 - 6" AGGREGATE SURFACE COURSE, TY. B
 - INCIDENTAL BITUMINOUS SURFACING 3"

PLAN	DATE
SURVEYED	
PLOTTED	
NOTE BOOK	
NO.	



PROFILE	DATE
SURVEYED	
PLOTTED	
NOTE BOOK	
NO.	

LAYOUT	DATE
DUP	03/28/03
DRAWN	04/28/03
REVISED	05/07/03

