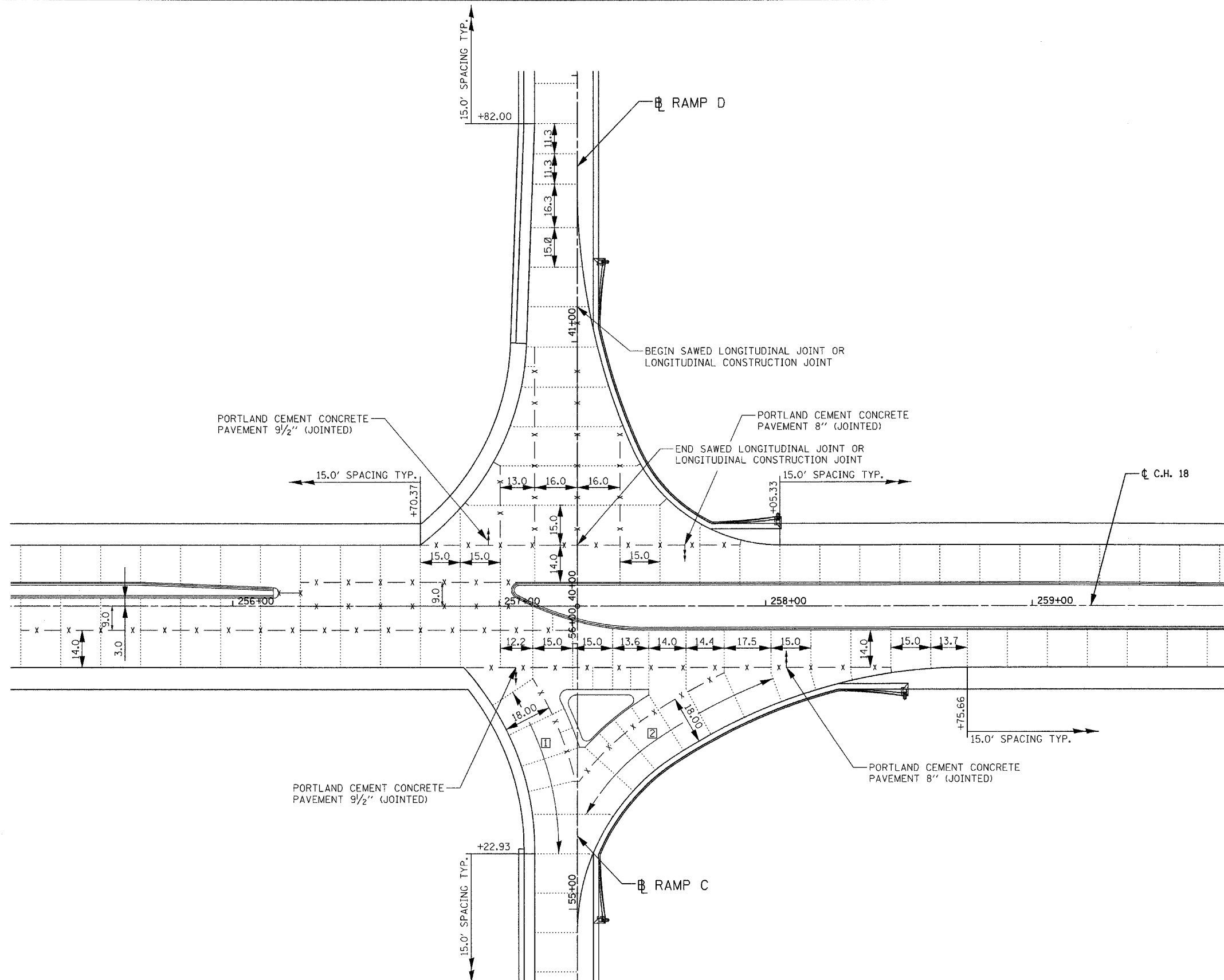


F.A.S. RTE.	SECTION	COUNTY	TOTAL SHEETS	SHEET NO.
642	99-00124-02-PV	COLES	229	67
STA.		TO STA.		
FED. ROAD DIST. NO.		ILLINOIS	FED. AID PROJECT	



LEGEND

- x - x - SAWED LONGITUDINAL JOINT OR LONGITUDINAL CONSTRUCTION JOINT

..... TRANSVERSE SAWED CONTRACTION JOINT

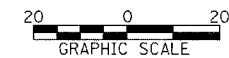
JOINTING DETAIL

NOTES:

□ MAXIMUM JOINT SPACING = 15.6'
MINIMUM JOINT SPACING = 8.6'

▣ MAXIMUM JOINT SPACING = 16.0'
MINIMUM JOINT SPACING = 11.5'

REVISIONS	
NAME	DATE



ILLINOIS DEPARTMENT OF TRANSPORTATION
JOINTING DETAIL
 RAMPS C & D WITH C.H. 18
 FAI-57, FAS 642
 SEC NO. 15-23K, 99-00124-02-PV
 COLES COUNTY, ILLINOIS

SCALE: 1"=20'
 DATE 07/13/2005

DRAWN BY JLW
 CHECKED BY SKM



© Copyright Hanson Professional Services Inc. 2005

LAYOUT JLW/SKM 04/28/03
 DRAWN JLW 04/28/03
 REVIEWED SKM 07/11/05
 I:\97\JOBS\97\20288\Civil\Sheet\AC-509Tnt.dgn