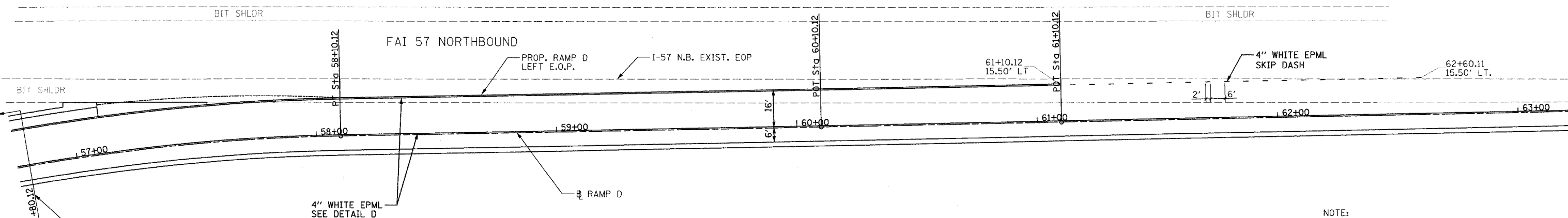


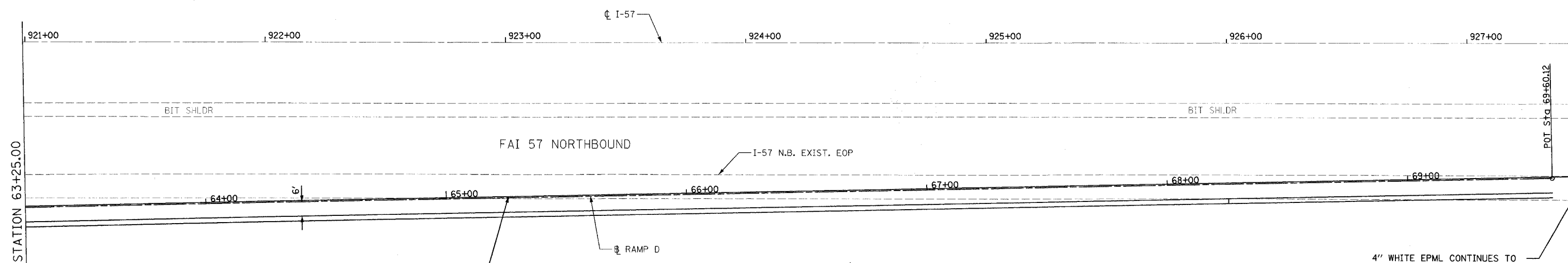
F.A.S. RTE.	SECTION	COUNTY	TOTAL SHEETS	SHEET NO.
642	99-00124-02-PV	COLES	229	76
STA. 56+75.00		TO STA. 63+25.00		
FED. ROAD DIST. NO.		ILLINOIS FED. AID PROJECT		



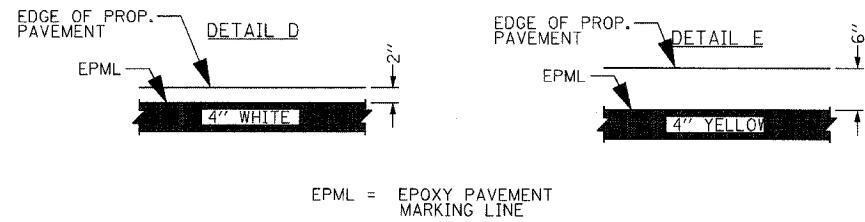
SEE INTERCHANGE RAMP D TYPICAL SECTION FOR PAVEMENT MARKING LOCATIONS. THIS SHEET.

NOTE:
REMOVE EXISTING PAVEMENT MARKING ALONG THE E.O.P. OF I-57 FROM STA. 61+10.12 TO STA. 69+90.22, RAMP D

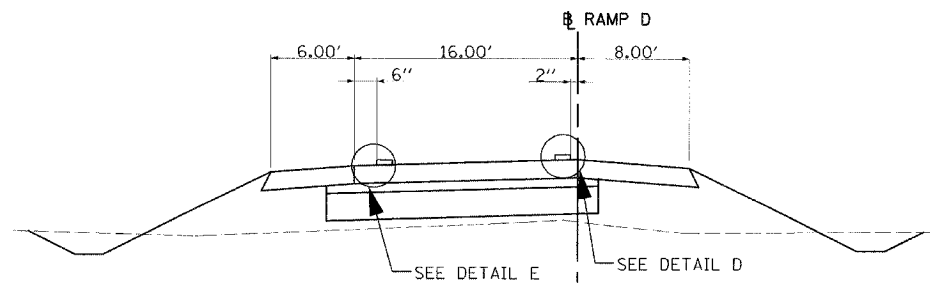
STATION 63+25.00



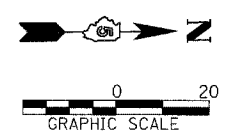
4" WHITE EPML CONTINUES TO STA. 69+90.22, MATCH EXISTING I-57 E.O.P. PAVEMENT MARKING



EPML = EPOXY PAVEMENT MARKING LINE



INTERCHANGE RAMP D
STA. 41+59.32 TO STA. 56+80.12



REVISIONS	
NAME	DATE

ILLINOIS DEPARTMENT OF TRANSPORTATION
RAMP D PAVEMENT MARKINGS
FAI-57, FAS 642
SEC NO. 15-23K, 99-00124-02-PV
COLES COUNTY, ILLINOIS

SCALE: 1"=20'
DATE 07/13/2005
DRAWN BY JLW
CHECKED BY SKM



© Copyright Hanson Professional Services Inc. 2005

LAYOUT SKM 03/28/03
 DRAWN JLW 04/28/03
 REVIEWED SKM 10/26/04
 07/13/2005
 I:\97\JOBS\97-82028B\Civil\Sheet\AC-506P\VT.D.dgn