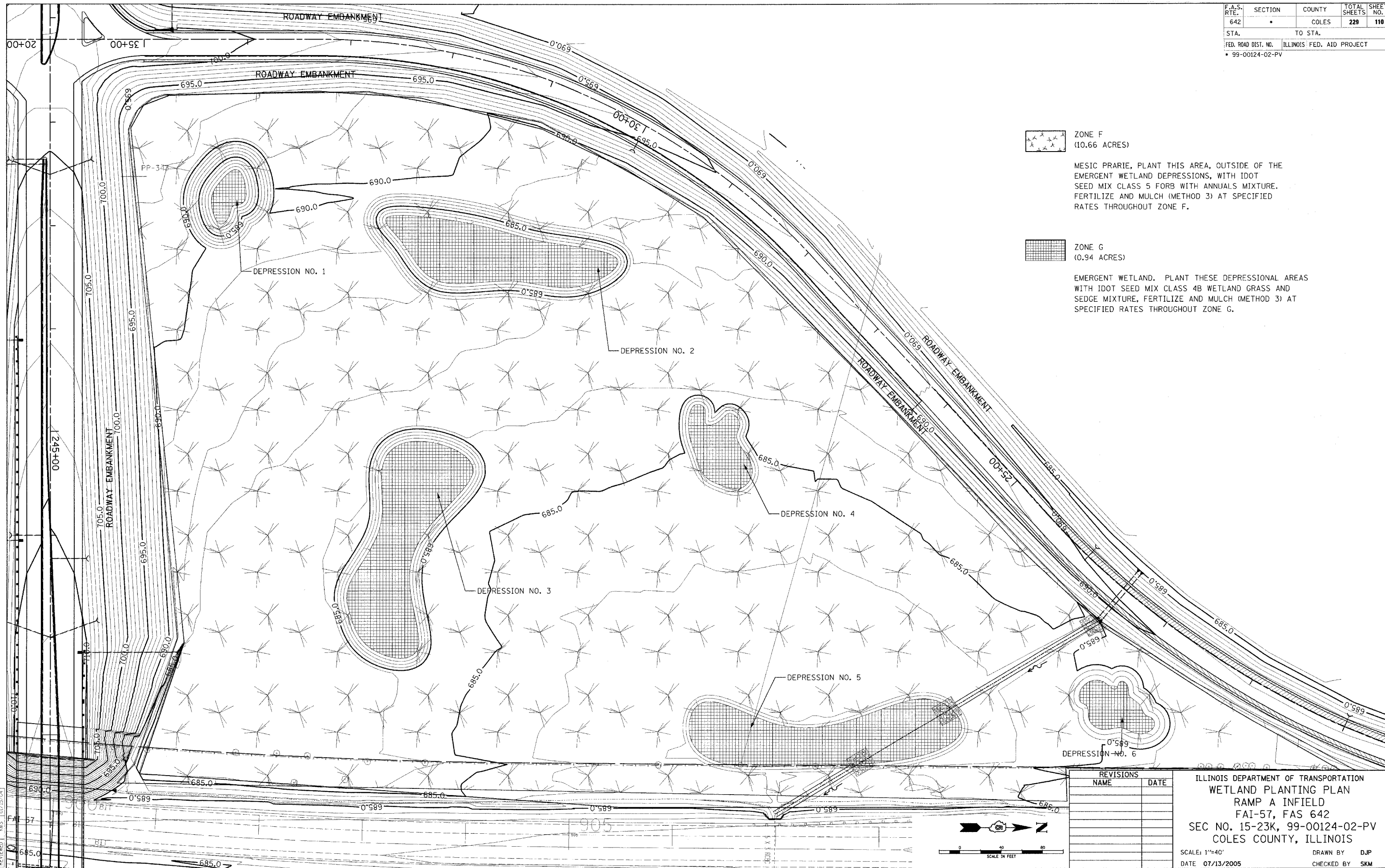
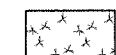



F.A.S. RTE.	SECTION	COUNTY	TOTAL SHEETS	SHEET NO.
642	•	COLES	229	110
STA.	TO STA.			
FED. ROAD DIST. NO.		ILLINOIS FED. AID PROJECT		
• 99-00124-02-PV				



 ZONE F
(10.66 ACRES)

MESIC PRARIE, PLANT THIS AREA, OUTSIDE OF THE EMERGENT WETLAND DEPRESSIONS, WITH IDOT SEED MIX CLASS 5 FORB WITH ANNUALS MIXTURE. FERTILIZE AND MULCH (METHOD 3) AT SPECIFIED RATES THROUGHOUT ZONE F.

 ZONE G
(0.94 ACRES)

EMERGENT WETLAND. PLANT THESE DEPRESSIONAL AREAS WITH IDOT SEED MIX CLASS 4B WETLAND GRASS AND SEDGE MIXTURE, FERTILIZE AND MULCH (METHOD 3) AT SPECIFIED RATES THROUGHOUT ZONE G.



© Copyright Hanson Professional Services Inc. 2005

LAYOUT	AKS	01/12/04
DRAWN	DJP	01/14/04
REVIEWED	AKS	01/15/04

REVISIONS	
NAME	DATE

ILLINOIS DEPARTMENT OF TRANSPORTATION
 WETLAND PLANTING PLAN
 RAMP A INFIELD
 FAI-57, FAS 642
 SEC NO. 15-23K, 99-00124-02-PV
 COLES COUNTY, ILLINOIS
 SCALE: 1"=40'
 DATE 07/13/2005
 DRAWN BY DJP
 CHECKED BY SKM