

10/25/2005
c:\projects\94434\04599p.d

CONTRACT NO. 94434

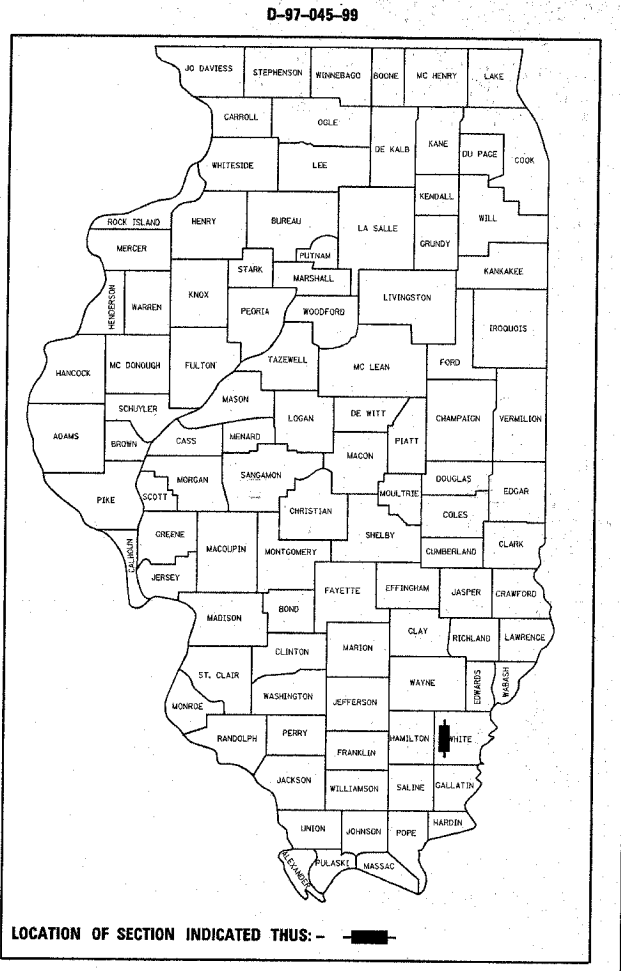
F.A.P. RTE.	SECTION	COUNTY	TOTAL SHEETS	SHEET NO.
328	109B-1	WHITE	26	1

STATE OF ILLINOIS
DEPARTMENT OF TRANSPORTATION
DIVISION OF HIGHWAYS

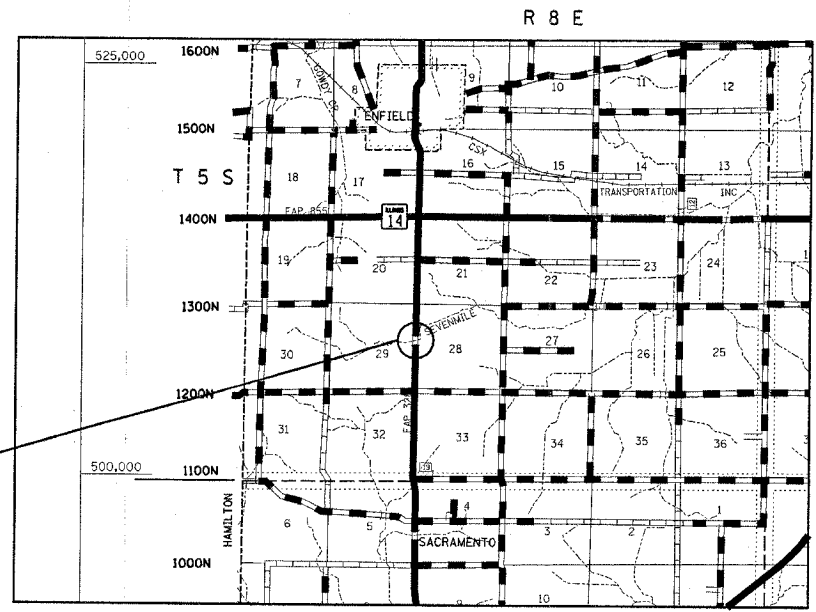
**PROPOSED
HIGHWAY PLANS**

FAP ROUTE 328 (US RTE 45)
SECTION 109B-1
PROJECT BR-328 (016)
WHITE COUNTY

FOR INDEX OF SHEETS, SEE SHEET NO. 2

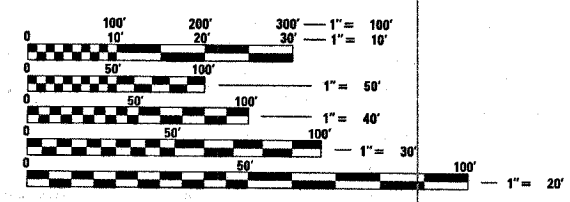


C-97-052-04



FAP ROUTE 328 (US 45)
SECTION 109B-1
STATION 74+70.00
PROPOSED STR# 097-2012
WHITE COUNTY

ADT (1600) - 2003



FULL SIZE PLANS HAVE BEEN PREPARED USING STANDARD ENGINEERING SCALES. REDUCED SIZED PLANS WILL NOT CONFORM TO STANDARD SCALES. IN MAKING MEASUREMENTS ON REDUCED PLANS, THE ABOVE SCALES MAY BE USED.

J.U.L.I.E.
JOINT UTILITY LOCATION INFORMATION FOR EXCAVATION
1-800-892-0123

STATE OF ILLINOIS
DEPARTMENT OF TRANSPORTATION
DIVISION OF HIGHWAYS

SUBMITTED Oct 25 20 05
Christina M. Brand
DEPUTY DIRECTOR OF HIGHWAYS, REGION ENGINEER

December 9, 20 05
Mike Fine
ENGINEER OF DESIGN AND ENVIRONMENT

December 9, 20 05
Eric Horn
DEPUTY DIRECTOR OF HIGHWAYS, CHIEF ENGINEER

**PRINTED BY THE AUTHORITY
OF THE STATE OF ILLINOIS**

PROJECT ENGINEER : BILL STANLEY
SQUAD LEADER : MYRA OLTMAN
DESIGNER : MYRA OLTMAN
TELEPHONE : 217/342-3951 EX 314

CONTRACT NO. 94434 TOWNSHIP : INDIAN

GROSS LENGTH = 740 FEET = 0.14 MILES
NET LENGTH = 575 FEET = 0.11 MILES