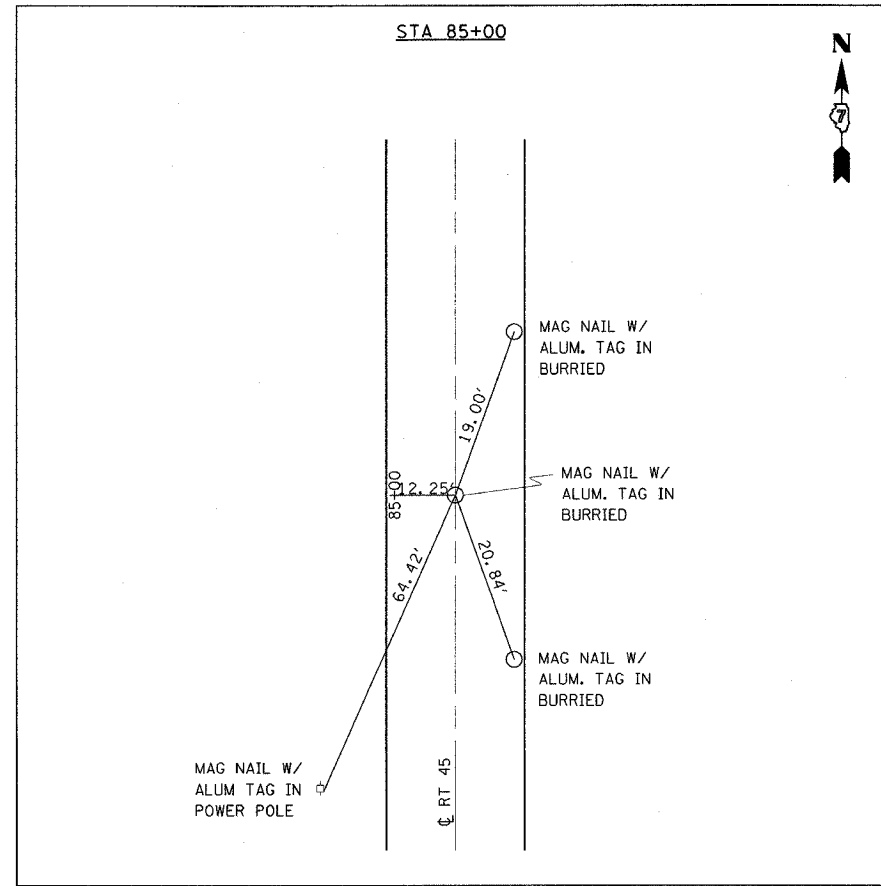
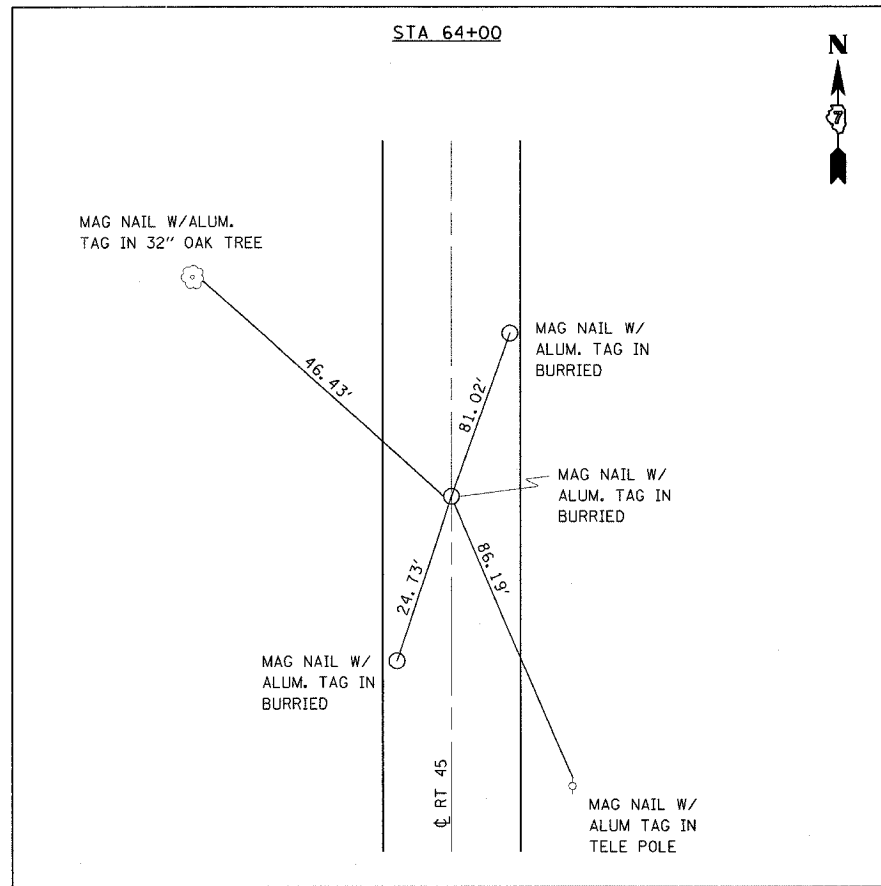


F.A.P. RTE.	SECTION	COUNTY	TOTAL SHEETS	SHEET NO.
328	109B-1	WHITE	26	5
STA.		TO STA.		
FED. ROAD DIST. NO.	ILLINOIS	FED. AID PROJECT		

TIES



- BM 200 EL. = 444.742 RR SPIKE IN POWER POLE, 17' N. OF CENTERLINE OF TOWNSHIP ROAD 1200N, 0.15 MILES W. OF INTERSECTION OF RT. 45 AND TOWNSHIP ROAD 1200N.
- BM 201 EL. = 451.887 RR SPIKE IN PWR. POLE, NW QUAD. OF RT. 45 AND TOWNSHIP ROAD 1200N. STA. 114+80/42' RT. (ROUTE 45 STATIONING)
- BM 202 EL. = 449.908 CHISELED SQUARE IN CENTER OF N. HEADWALL OF 1.5' x 3' BOX CULVERT. STA. 97+55/24' LT.
- BM 203 EL. = 434.450 CHISELED SQUARE IN CENTER OF N. HEADWALL OF 1.5' x 3' BOX CULVERT. STA. 78+70/24' LT.
- BM 204 EL. = 431.775 RR SPIKE IN POWER POLE, S. SIDE OF BRIDGE ON E. SIDE OF RT. 45. STA. 75+34/39' LT.
- BM 205 EL. = 428.478 RR SPIKE IN POWER POLE, 4th PWR. POLE N. OF BRIDGE ON E. SIDE. STA. 69+25/39' LT.
- BM 500 EL. = 432.041 CHISELED SQUARE IN CENTER OF N. HEADWALL OF 1'DIA. RCCP. STA. 59+21/29' RT.

- BM 501 EL. = 438.583 CHISELED SQUARE IN CENTER OF S. WALL OF CONC. WIER @ W. END OF 4' x 4' BOX CULVERT. STA. 40+80/24' RT.
- BM 502 EL. = 451.960 CHISELED SQUARE IN CENTER OF S. WALL OF CONC. WIER @ W. END OF 4' x 8' BOX CULVERT. STA. 23+77/24' RT.
- BM 503 EL. = 469.880 CHISELED SQUARE IN CENTER OF S. HEADWALL OF 1'DIA. RCCP. STA. 13+15/24' RT.
- BM 504 EL. = 478.487 CHISELED SQUARE IN CENTER OF N. HEADWALL OF 1.5' x 4' BOX CULVERT. STA. 490+98/23' RT. (ROUTE 14 STATIONING)
- BM 505 EL. = 455.094 CHISELED SQUARE IN CENTER OF N. HEADWALL OF 5'DIA. RCCP. STA. 472+26/31' RT.
- BM 506 EL. = 448.740 CHISELED SQUARE IN CENTER OF N. HEADWALL OF 3'DIA. RCCP. STA. 447+48/24' RT.
- BM 507 EL. = 433.512 RR SPIKE IN POWER POLE STA. 420+76/49' RT.

- BM 508 EL. = 406.113 CHISELED SQUARE IN CENTER OF W. HEADWALL OF 2'-2'DIA. VCP. STA. 390+18/32' RT.
- BM 509 EL. = 402.701 CHISELED SQUARE ON TOP OF W. END OF S. ABUTMENT OF BRIDGE TO HOUSE. STA. 374+12/35' RT.
- BM 510 EL. = 401.210 CHISELED SQUARE ON TOP OF S. END OF W. ABUTMENT OF BRIDGE. (BRIDGE STRUCTURE #0970068) STA. 340+51/20' LT.
- BM 511 EL. = 401.359 BRASS MONUMENT ON TOP OF S. END OF W. ABUTMENT OF BRIDGE. (BRIDGE STRUCTURE #0970066) STA. 307+15/19' LT.
- BM 512 EL. = 394.233 RR SPIKE IN POWER POLE. STA. 289+55/60' RT.
- BM 513 EL. = 398.305 CHISELED SQUARE IN CENTER OF E. HEADWALL OF 4' x 4' BOX CULVERT, SE QUAD. OF RT. 14 AND TOWNSHIP ROAD 600E STA. 282+70/78' LT.
- BM 514 EL. = 398.686 CHISELED SQUARE IN CENTER OF S. HEADWALL OF 2' x 4' BOX CULVERT. STA. 272+18/23' LT.

REVISIONS	
NAME	DATE

ILLINOIS DEPARTMENT OF TRANSPORTATION

## BENCHMARKS & ALIGNMENT TIES

SCALE: VERT. \_\_\_\_\_ HORIZ. \_\_\_\_\_

DATE \_\_\_\_\_ DRAWN BY \_\_\_\_\_ CHECKED BY \_\_\_\_\_

PLOT DATE = 10/25/2005  
 FILE NAME = #094434  
 USER NAME = district