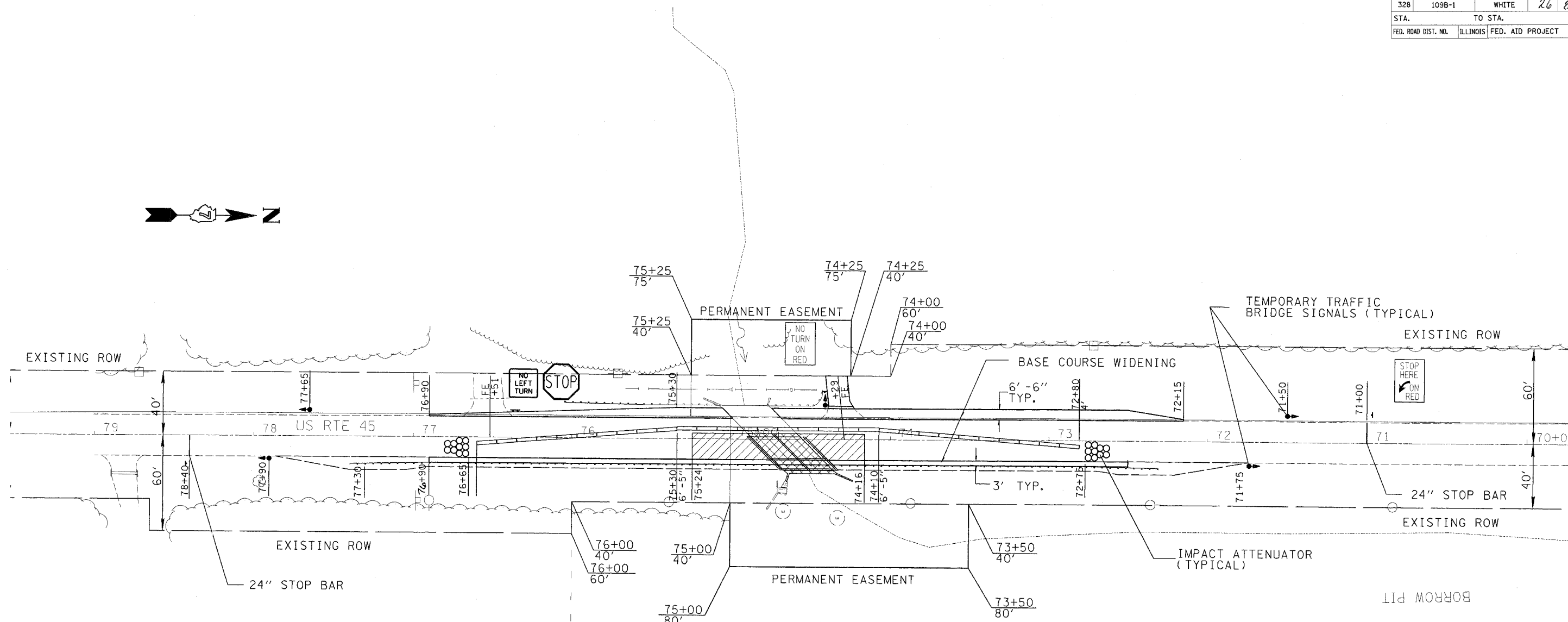


SC 1

CONTRACT NO. 94434

F.A.P. RTE.	SECTION	COUNTY	TOTAL SHEETS	SHEET NO.
328	109B-1	WHITE	26	8
STA.		TO STA.		
FED. ROAD DIST. NO.	ILLINOIS	FED. AID PROJECT		



**TREE REMOVAL (6 - 15 UNITS)**

74+30	50' LT	10
74+55	45' LT	6
TOTAL		16 UNITS

**DITCH CHECK REMOVAL**

74+68	32' LT	1 EACH
TOTAL		1 EACH

**BASE COURSE WIDENING**

LT 72+50	TO 74+36	62
74+36	TO 74+73	12
74+73	TO 76+90	72
RT 72+15	TO 72+50	15
72+50	TO 74+71	160
75+02	TO 75+30	12
<b>75+30</b>	<b>TO 76+90</b>	<b>67</b>
		400 SQ YD

**PAVEMENT REMOVAL (SPECIAL)**

74+16.00	TO 74+56.75	74.7
74+83.25	TO 75+24.00	74.7
		149.4 SQ YD

**BITUMINOUS CONCRETE PAVEMENT 14" (FULL DEPTH)**

STAGE 1		
74+16.00 TO 74+56.75	75	
74+56.75 TO 74+83.25	48	
74+83.25 TO 75+24.00	75	
198 SQ YD		

**SUB-BASE GRANULAR MATERIAL, TYPE B**

STAGE 1		
74+16.00 TO 74+56.75	51	
74+56.75 TO 74+83.25	7	
74+83.25 TO 75+24.00	51	
109 TON		

**INCIDENTAL BITUMINOUS SURFACING, SUPERPAVE, N50**

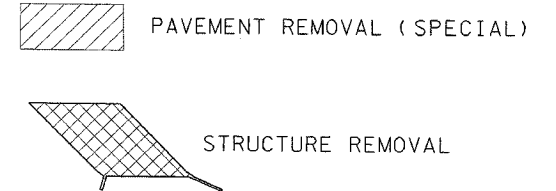
STAGE 1		
STATION	74+29 (FE)	4.0 TON

**PAVEMENT MARKING REMOVAL**

PERM. (LT EDGE)	71+00 TO 78+40	247
PERM. (CL)	71+00 TO 78+40	62
TEMP (LT EDGE)	71+00 TO 78+40	247
TEMP (CL)	71+00 TO 78+40	247
		802 SQ FT

**STAGE I SEQUENCE OF OPERATIONS**

1. CONSTRUCT BASE COURSE WIDENING TRAFFIC CONTROL STANDARD 701326.
2. PLACE TEMPORARY GUARDRAIL AND TEMPORARY TRAFFIC TERMINAL, TYPE 1 (TANGENT).
3. ERECT SIGNS, TRAFFIC SIGNALS, TEMPORARY BARRIERS, ETC. ACCORDING TO TRAFFIC CONTROL STANDARD 701321.
4. PLACE TEMPORARY PAVEMENT MARKING LINE TO ALLOW FOR A 12 FOOT TRAFFIC LANE.
5. REMOVE THE STAGE I PORTION OF THE EXISTING STRUCTURE, CONCRETE DITCH CHECK AND PAVEMENT.
6. CONSTRUCT THE STAGE I PORTION OF THE PROPOSED BOX CULVERT, PAVEMENT, BASE COURSE WIDENING AND NEW GUARDRAIL AND TRAFFIC TERMINALS, TYPE 1 SPECIAL (TANGENT).
7. CONSTRUCT SEEDING, MULCH AND TEMPORARY DITCH CHECKS ON STAGE I TRAFFIC SIDE.



REVISIONS	
NAME	DATE

ILLINOIS DEPARTMENT OF TRANSPORTATION

**STAGE CONSTRUCTION 1**

SCALE: VERT. HORIZ.  
DATE

DRAWN BY  
CHECKED BY

PLOT DATE = 10/25/2005  
PLOT NAME = 109B-1  
USER NAME = davis